

Converting Colors

$Y_{xy}(27.9942, 0.3595, 0.3264)$

Have a look what the booklet for
Yxy(27.9942, 0.3595, 0.3264)
contains.

Yxy(28.0579, 0.3589, 0.3262)	3
<i>Conversions</i>	4
<i>Details</i>	6
<i>Harmonies</i>	12
<i>Previews</i>	24
<i>Color Blindness Simulation</i>	27
<i>CSS Examples</i>	30

Color

Yxy(28.0579, 0.3589, 0.3262)

Conversions

Conversions Part 1

Format	Color
Hex	B08688
RGB	176, 134, 136
RGB Percent	69%, 53%, 53%
CMY	0.3099, 0.4745, 0.4666
CMYK	0.00, 0.24, 0.23, 0.31
HSL	357°, 21%, 61%
HSV	357°, 24%, 69%
XYZ	30.8706, 28.0579, 27.0859
YIQ	146.7860, 24.3900, 9.5260

Conversions

Conversions Part 2

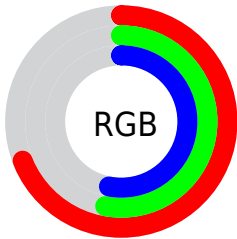
Format	Color
RYB	176, 134, 136
Decimal	11568776
CIELab	59.94, 16.36, 5.15
CIELCh	60, 17.153, 17.468
Yxy	28.0579, 0.3589, 0.3262
Android (android.graphics.Color)	4289758856 (0xFFB08688)
YUV	146.7860, -5.3175, 25.6207
Hunter-Lab	52.9697, 11.3322, 6.7610

Details

The Yxy color **28.0579, 0.3589, 0.3262** is a light color, and the websafe version is hex **CC9999**. A complement of this color would be **39.1667, 0.2796, 0.3319**, and the grayscale version is **29.0999, 0.3127, 0.3290**.

A 20% lighter version of the original color is **56.3706, 0.3493, 0.3269**, and **11.2235, 0.3771, 0.3251** is the 20% darker color. If you saturate the color by 10%, you get **23.1522, 0.3865, 0.3250**, and if you desaturate by 10%, it is **33.8502, 0.3366, 0.3274**.

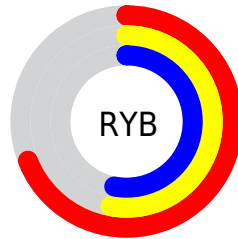
Distribution



Red (69%)

Green (53%)

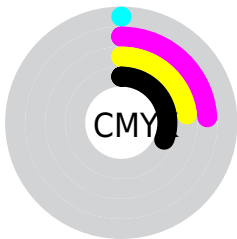
Blue (53%)



Red (69%)

Yellow (53%)

Blue (53%)

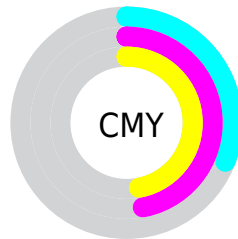


Cyan (0%)

Magenta (24%)

Yellow (23%)

Black (31%)



Cyan (31%)


Magenta (47%)


Yellow (47%)

Brightness & Saturation Gradients


These gradients show how the Yxy color 28.0579, 0.3589, 0.3262 changes by changing the brightness by 10 percent. The first figure shows a shift by +10% for each color and the second figure -10%.


Similar to the brightness gradients but the following saturation gradients show a change of the Yxy color 28.0579, 0.3589, 0.3262 by changing the saturation by 10% instead.


 28.0579, 0.3589,
0.3262


 28.0579, 0.3589,
0.3262


292.7435, 0.3337,
0.3281


 18.3693, 0.3660,
0.3255


 56.5769, 0.3492,
0.3270

 11.2155, 0.3757,
0.3246


 76.1760, 0.3457,
0.3273

 6.2119, 0.3896,
0.3230

 99.8475, 0.3428,
0.3275

 2.9744, 0.4112,
0.3201

127.9757, 0.3404,
0.3276

 1.1184, 0.4500,
0.3143

160.9450, 0.3384,
0.3278

 0.0000, 1.0000,
0.0000

199.1398, 0.3366,

 0.0000, 0.0000,

0.3279

0.0000

242.9445, 0.3351,
0.3280

■ 28.0579, 0.3589,
0.3262

■ 28.0579, 0.3589,
0.3262

■ 23.1522, 0.3865,
0.3250

■ 33.8502, 0.3366,
0.3274

■ 19.0858, 0.4203,
0.3239

■ 40.5656, 0.3186,
0.3286

■ 15.8127, 0.4602,
0.3230

■ 48.2435, 0.3042,
0.3297

■ 13.2812, 0.5050,
0.3227

■ 56.9196, 0.2926,
0.3306

■ 11.4333, 0.5511,
0.3231

■ 66.6281, 0.2832,
0.3315

■ 10.2025, 0.5925,
0.3244

■ 77.4013, 0.2755,
0.3323

■ 9.5090, 0.6226,
0.3265

■ 87.8601, 0.2689,
0.3307

■ 9.2460, 0.6348,
0.3270

■ 87.9676, 0.2681,
0.3289

Harmonies

Analogous

The Analogous color harmony consists of three colors that are next to each other on the color wheel.



28.0579, 0.3357, 0.3041



28.0579, 0.3589, 0.3262



28.0579, 0.3692, 0.3499

Triad

The Triadic color harmony groups three colors that are evenly spaced from another and form a triangle on the color wheel.



28.0579, 0.3589, 0.3262



28.0579, 0.3164, 0.3747



28.0579, 0.2639, 0.2873

Complementary

The Complementary color scheme is a pair of colors which are on the opposite of each other on the color wheel.



28.0579, 0.3589, 0.3262



39.1667, 0.2796, 0.3319

Split Complementary

Split-complementary colors differ from the complementary color scheme. The scheme consists of three colors, the original color and two neighbors of the complement color.



28.0579, 0.2594, 0.3041



28.0579, 0.3589, 0.3262



28.0579, 0.2889, 0.3558

Square

The Square scheme is like the rectangle color scheme, but the four colors are evenly spaced on the color wheel.



28.0579, 0.3589, 0.3262



28.0579, 0.3438, 0.3794



28.0579, 0.2683, 0.3292



28.0579, 0.2809, 0.2820

Rectangle

The Rectangle color scheme consists of four colors that form a rectangle on the color wheel.



28.0579, 0.3589, 0.3262



28.0579, 0.3671, 0.3639



28.0579, 0.2683, 0.3292



28.0579, 0.2609, 0.2917

Sweetspot

The Sweet Spot groups the original color and five complimentary colors.



28.0592, 0.3589, 0.3262



69.4133, 0.3241, 0.3282



29.1723, 0.3132, 0.2704



14.8883, 0.3251, 0.3281



89.0005, 0.3127, 0.3290



17.0645, 0.3127, 0.3290

Same Dimension

The Same Dimension uses a secret algorithm to generate beautiful new colors.



28.0592, 0.3589, 0.3262



45.6728, 0.3738, 0.3255



33.6980, 0.3551, 0.3563



8.5116, 0.3280, 0.3280



6.7883, 0.6338, 0.3265



0.2158, 0.6085, 0.3126

Inverse Universe

The Inverse Universe completely reimagines the original color for something new.



28.0592, 0.3589, 0.3262



45.6728, 0.3738, 0.3255



32.3488, 0.2758, 0.3000



8.5116, 0.3280, 0.3280



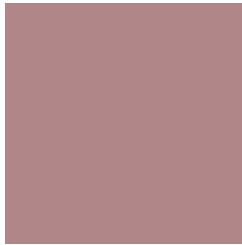
6.7883, 0.6338, 0.3265



0.2158, 0.6085, 0.3126

Previews

White Background



This preview shows how the Yxy color 28.0579, 0.3589, 0.3262 looks on a white background.

Color Contrast Check

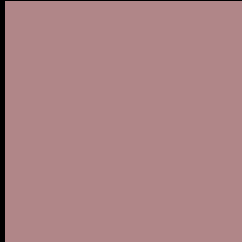
Large Text (above 18pt) WCAG AA ✓ Pass

Any Text WCAG AA ✗ Fail

Large Text (above 18pt) WCAG AAA ✗ Fail

Any Text WCAG AAA ✗ Fail

Black Background



This preview shows how the Yxy color 28.0579, 0.3589, 0.3262 looks on a black background.

Color Contrast Check

Large Text (above 18pt) WCAG AA ✓ Pass

Any Text WCAG AA ✓ Pass

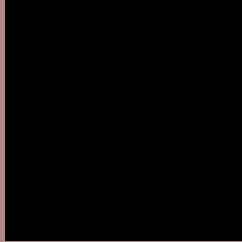
Large Text (above 18pt) WCAG AAA ✓ Pass

Any Text WCAG AAA × Fail

If you want to check with other color combinations, try the [Color Contrast Checker](#).

Yxy 28.0579, 0.3589, 0.3262

Background



This preview shows how black text looks on a background with the Yxy color 28.0579, 0.3589, 0.3262.



This preview shows how white text looks on a background with the Yxy color 28.0579, 0.3589, 0.3262.

Color Blindness Simulation

Color vision deficiency is a very complex topic, and I could not describe the different causes any better than Wikipedia does, so if you want to learn more, you should check out their [article about color blindness](#).

Dichromacy



Original Color

28.0579, 0.3589, 0.3262

Protanopia

28.1954, 0.3189, 0.3322

Deuteranopia

28.1868, 0.3424, 0.3368



Tritanopia

28.1053, 0.3523, 0.3146

Trichromacy



Original Color

28.0579, 0.3589, 0.3262

Protanomaly

27.9187, 0.3325, 0.3291

Deuteranomaly

28.1417, 0.3485, 0.3337

Tritanomaly

28.0156, 0.3558, 0.3189

Monochromacy



Original Color

28.0579, 0.3589, 0.3262

Achromatopsia

29.1771, 0.3127, 0.3290

Achromatomaly

28.5983, 0.3290, 0.3275

CSS Examples

Text

The CSS property to change the color of the text to Yxy 28.0579, 0.3589, 0.3262 is called "color". The color property can be set on classes, ids or directly on the HTML element.

This example shows how text in the color `rgb(176, 134, 136)` looks like.

```
.text, #text, p{  
    color:rgb(176, 134, 136)  
}
```

If you want to add a text shadow in that color use the text-shadow property, you can generate a text shadow directly with our [CSS Text Shadow Generator](#).

Here you see how black text with a 4 pixel rgb(176, 134, 136) colored shadow looks like.

```
.shadow{ text-shadow: 4px 4px 2px rgb(176, 134, 136) }
```

Border

The CSS property to change the border of an element to Yxy 28.0579, 0.3589, 0.3262 is called "border". The border property can be set on classes, ids or directly on the HTML element.

This example shows the color as border, it can be applied via the CSS property "border" or "border-color".

```
.border, #border, table{ border:4px solid rgb(176, 134, 136) }
```

If only the border color should be changed use the property `border-color`.

```
.border{ border-color:rgb(176, 134, 136) }
```

If you want to add a box shadow in that color use:

Here you see how a box with a 4 pixel `rgb(176, 134, 136)` colored shadow looks like.

```
.boxshadow{ -moz-box-shadow:4px 4px 4px  
4px rgb(176, 134, 136); -webkit-box-  
shadow:4px 4px 4px 4px rgb(176, 134, 136);  
box-shadow:4px 4px 4px 4px rgb(176, 134,  
136) }
```


Background

The CSS property to change the background color of an element to Yxy 28.0579, 0.3589, 0.3262 is called "background". The background property can be set on classes, ids or directly on the HTML element.

```
.background, #background, body{  
background: rgb(176, 134, 136) }
```

If only the background color should be changed can be used:

```
.background{ background-color: rgb(176,  
134, 136) }
```

This example shows the color as background, it is applied via the CSS property "background".

To optimize and compress your CSS code, you can use our [online CSS compressor and optimizer](#) based on csstidy. If you want to create a linear or radial gradient as background or border, check our [CSS Gradient Generator](#).

Hey! You found this booklet interesting? Support Converting Colors with the new Membership Option!

The pro membership hides all ads, plus gives you double the colors in the color bucket, and more awesome pro features!

[Learn more, Memberships starting at \\$2.50/m!](#)

**Follow me
on Twitter!**

@ConvertingColor