

# Converting Colors

$Yxy(28.6832, 0.3693, 0.3306)$

Have a look what the booklet for  
Yxy(28.6832, 0.3693, 0.3306)  
contains.

<b>Yxy(28.6887, 0.3693, 0.3306)</b> .....	3
<b><i>Conversions</i></b> .....	4
<b><i>Details</i></b> .....	6
<b><i>Harmonies</i></b> .....	12
<b><i>Previews</i></b> .....	24
<b><i>Color Blindness Simulation</i></b> .....	27
<b><i>CSS Examples</i></b> .....	30

# Color

**Yxy(28.6887, 0.3693, 0.3306)**

# Conversions

## Conversions Part 1

<b>Format</b>	<b>Color</b>
Hex	B68685
RGB	182, 134, 133
RGB Percent	71%, 53%, 52%
CMY	0.2864, 0.4745, 0.4784
CMYK	0.00, 0.26, 0.27, 0.29
HSL	1°, 25%, 62%
HSV	1°, 27%, 71%
XYZ	32.0470, 28.6887, 26.0420
YIQ	148.2380, 28.9290, 9.8650

# Conversions

## Conversions Part 2

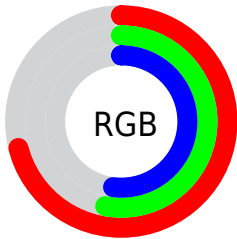
<b>Format</b>	<b>Color</b>
<b>RYB</b>	182, 134, 133
Decimal	11961989
CIELab	60.51, 18.24, 7.76
CIELCh	61, 19.821, 23.049
Yxy	28.6887, 0.3693, 0.3306
Android (android.graphics.Color)	4290152069 (0xFFB68685)
YUV	148.2380, -7.5123, 29.6093
Hunter-Lab	53.5618, 13.0665, 8.6662

# Details

The Yxy color **28.6887, 0.3693, 0.3306** is a light color, and the websafe version is hex **CC9999**. A complement of this color would be **41.4023, 0.2739, 0.3274**, and the grayscale version is **29.7423, 0.3127, 0.3290**.

A 20% lighter version of the original color is **57.4365, 0.3578, 0.3302**, and **11.5699, 0.3891, 0.3292** is the 20% darker color. If you saturate the color by 10%, you get **23.7101, 0.4001, 0.3313**, and if you desaturate by 10%, it is **34.5877, 0.3443, 0.3300**.

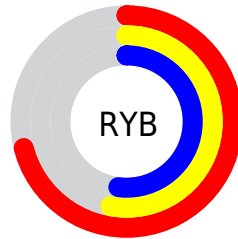
# Distribution



Red (71%)

Green (53%)

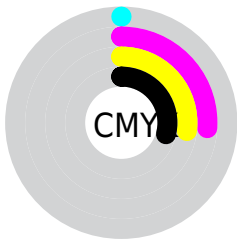
Blue (52%)



Red (71%)

Yellow (53%)

Blue (52%)

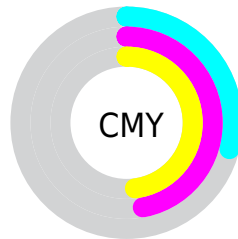


Cyan (0%)

Magenta (26%)

Yellow (27%)

Black (29%)



Cyan (29%)

Magenta (47%)


Yellow (48%)


# Brightness & Saturation Gradients

These gradients show how the Yxy color 28.6887, 0.3693, 0.3306 changes by changing the brightness by 10 percent. The first figure shows a shift by +10% for each color and the second figure -10%.


Similar to the brightness gradients but the following saturation gradients show a change of the Yxy color 28.6887, 0.3693, 0.3306 by changing the saturation by 10% instead.





 28.6887, 0.3693,  
0.3306

 28.6887, 0.3693,  
0.3306


295.7433, 0.3385,  
0.3303


 18.8455, 0.3779,  
0.3305


 57.5821, 0.3574,  
0.3306

 11.5587, 0.3897,  
0.3301


 77.4011, 0.3532,  
0.3306

 6.4439, 0.4065,  
0.3293


 101.3141, 0.3497,  
0.3305

 3.1168, 0.4324,  
0.3274

129.7055, 0.3467,  
0.3305

 1.1930, 0.4798,  
0.3237

162.9597, 0.3442,  
0.3304

 0.0560, 0.8990,  
0.1010

201.4612, 0.3420,

 0.0000, 0.0000,

0.3304

0.0000

245.5943, 0.3401,  
0.3303

■ 28.6887, 0.3693,  
0.3306

■ 28.6887, 0.3693,  
0.3306

■ 23.7101, 0.4001,  
0.3313

■ 34.5877, 0.3443,  
0.3300

■ 19.6018, 0.4373,  
0.3319

■ 41.4459, 0.3242,  
0.3294

■ 16.3149, 0.4804,  
0.3323

■ 49.3048, 0.3081,  
0.3288

■ 13.7943, 0.5272,  
0.3326

■ 58.2023, 0.2951,  
0.3284

■ 11.9780, 0.5728,  
0.3324

■ 68.1743, 0.2846,  
0.3279

■ 10.7945, 0.6100,  
0.3318

■ 79.2550, 0.2760,  
0.3275

■ 10.1554, 0.6331,  
0.3311

■ 88.6826, 0.2711,  
0.3289

■ 10.0235, 0.6386,  
0.3312

# Harmonies

## Analogous

The Analogous color harmony consists of three colors that are next to each other on the color wheel.



28.6887, 0.3448, 0.3049



28.6887, 0.3693, 0.3306



28.6887, 0.3777, 0.3573

# Triad

The Triadic color harmony groups three colors that are evenly spaced from another and form a triangle on the color wheel.



28.6887, 0.3693, 0.3306



28.6887, 0.3106, 0.3788



28.6887, 0.2596, 0.2792

# Complementary

The Complementary color scheme is a pair of colors which are on the opposite of each other on the color wheel.



28.6887, 0.3693, 0.3306



41.4023, 0.2739, 0.3274

# Split Complementary

Split-complementary colors differ from the complementary color scheme. The scheme consists of three colors, the original color and two neighbors of the complement color.



28.6887, 0.2517, 0.2958



28.6887, 0.3693, 0.3306



28.6887, 0.2802, 0.3545

# Square

The Square scheme is like the rectangle color scheme, but the four colors are evenly spaced on the color wheel.



28.6887, 0.3693, 0.3306



28.6887, 0.3428, 0.3873



28.6887, 0.2590, 0.3232



28.6887, 0.2811, 0.2759



# Rectangle

The Rectangle color scheme consists of four colors that form a rectangle on the color wheel.



28.6887, 0.3693, 0.3306



28.6887, 0.3729, 0.3725



28.6887, 0.2590, 0.3232



28.6887, 0.2553, 0.2833

# Sweetspot

The Sweet Spot groups the original color and five complimentary colors.



28.6900, 0.3693, 0.3306



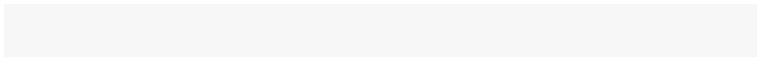
73.5388, 0.3265, 0.3295



30.0633, 0.3166, 0.2642



15.8106, 0.3293, 0.3295



93.3107, 0.3127, 0.3290



18.7317, 0.3127, 0.3290



# Same Dimension

The Same Dimension uses a secret algorithm to generate beautiful new colors.



28.6900, 0.3693, 0.3306



46.7419, 0.3859, 0.3310



36.1963, 0.3606, 0.3645



9.0409, 0.3287, 0.3295



7.0922, 0.6382, 0.3314



0.2600, 0.6309, 0.3372



# Inverse Universe

The Inverse Universe completely reimagines the original color for something new.



41.4023, 0.2739, 0.3274



73.4861, 0.2668, 0.3271



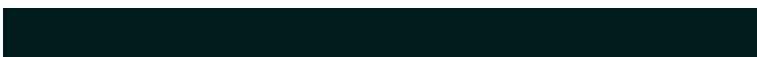
32.3693, 0.2704, 0.2906



10.1782, 0.2985, 0.3285



24.9602, 0.2230, 0.3226

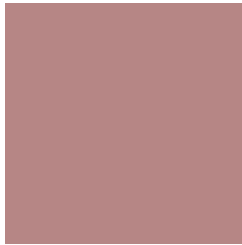


0.8899, 0.2234, 0.3243



# Previews

## White Background



This preview shows how the Yxy color 28.6887, 0.3693, 0.3306 looks on a white background.

## Color Contrast Check

Large Text (above 18pt) WCAG AA ✓ Pass

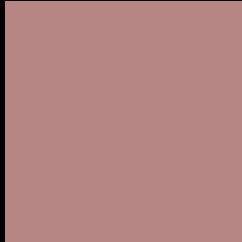
Any Text WCAG AA ✗ Fail

Large Text (above 18pt) WCAG AAA ✗ Fail

Any Text WCAG AAA ✗ Fail



# Black Background



This preview shows how the Yxy color 28.6887, 0.3693, 0.3306 looks on a black background.

## Color Contrast Check

Large Text (above 18pt) WCAG AA ✓ Pass

Any Text WCAG AA ✓ Pass

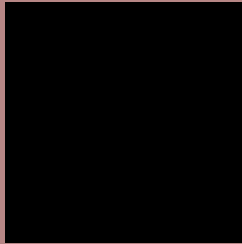
Large Text (above 18pt) WCAG AAA ✓ Pass

Any Text WCAG AAA × Fail

If you want to check with other color combinations, try the [Color Contrast Checker](#).

**Yxy 28.6887, 0.3693, 0.3306**

## Background



This preview shows how black text looks on a background with the Yxy color 28.6887, 0.3693, 0.3306.



This preview shows how white text looks on a background with the Yxy color 28.6887, 0.3693, 0.3306.

# Color Blindness Simulation

Color vision deficiency is a very complex topic, and I could not describe the different causes any better than Wikipedia does, so if you want to learn more, you should check out their [article about color blindness](#).

## Dichromacy



### Original Color

28.6887, 0.3693, 0.3306

### Protanopia

28.9059, 0.3238, 0.3402

### Deuteranopia

28.8227, 0.3498, 0.3428



## Tritanopia

28.8255, 0.3592, 0.3150

# Trichromacy



## Original Color

28.6887, 0.3693, 0.3306

## Protanomaly

28.8335, 0.3397, 0.3368

## Deuteranomaly

28.6136, 0.3576, 0.3381

## Tritanomaly

28.7064, 0.3638, 0.3206

# Monochromacy



## Original Color

28.6887, 0.3693, 0.3306

## Achromatopsia

29.6138, 0.3127, 0.3290

## Achromatomaly

29.1017, 0.3310, 0.3291

# CSS Examples

## Text

The CSS property to change the color of the text to Yxy 28.6887, 0.3693, 0.3306 is called "color". The color property can be set on classes, ids or directly on the HTML element.

This example shows how text in the color `rgb(182, 134, 133)` looks like.

```
.text, #text, p{  
    color:rgb(182, 134, 133)  
}
```

If you want to add a text shadow in that color use the text-shadow property, you can generate a text shadow directly with our [CSS Text Shadow Generator](#).

Here you see how black text with a 4 pixel rgb(182, 134, 133) colored shadow looks like.

```
.shadow{ text-shadow: 4px 4px 2px rgb(182, 134, 133) }
```

## Border

The CSS property to change the border of an element to Yxy 28.6887, 0.3693, 0.3306 is called "border". The border property can be set on classes, ids or directly on the HTML element.

This example shows the color as border, it can be applied via the CSS property "border" or "border-color".

```
.border, #border, table{ border:4px solid rgb(182, 134, 133) }
```

If only the border color should be changed use the property `border-color`.

```
.border{ border-color:rgb(182, 134, 133) }
```

If you want to add a box shadow in that color use:

Here you see how a box with a 4 pixel `rgb(182, 134, 133)` colored shadow looks like.

```
.boxshadow{ -moz-box-shadow:4px 4px 4px  
4px rgb(182, 134, 133); -webkit-box-  
shadow:4px 4px 4px 4px rgb(182, 134, 133);  
box-shadow:4px 4px 4px 4px rgb(182, 134,  
133) }
```



# Background

The CSS property to change the background color of an element to Yxy 28.6887, 0.3693, 0.3306 is called "background". The background property can be set on classes, ids or directly on the HTML element.

```
.background, #background, body{  
background: rgb(182, 134, 133) }
```

If only the background color should be changed can be used:

```
.background{ background-color: rgb(182,  
134, 133) }
```

This example shows the color as background, it is applied via the CSS property "background".

To optimize and compress your CSS code, you can use our [online CSS compressor and optimizer](#) based on csstidy. If you want to create a linear or radial gradient as background or border, check our [CSS Gradient Generator](#).

Hey! You found this booklet interesting? Support Converting Colors with the new Membership Option!

The pro membership hides all ads, plus gives you double the colors in the color bucket, and more awesome pro features!

**[Learn more, Memberships starting at \\$2.50/m!](#)**

**Follow me  
on Twitter!**

@ConvertingColor