

Converting Colors

$Y_{xy}(28.7110, 0.3511, 0.3140)$

Have a look what the booklet for
Yxy(28.7110, 0.3511, 0.3140)
contains.

Yxy(28.5595, 0.3510, 0.3133)	3
<i>Conversions</i>	4
<i>Details</i>	6
<i>Harmonies</i>	12
<i>Previews</i>	24
<i>Color Blindness Simulation</i>	27
<i>CSS Examples</i>	30

Color

Yxy(28.5595, 0.3510, 0.3133)

Conversions

Conversions Part 1

Format	Color
Hex	B28691
RGB	178, 134, 145
RGB Percent	70%, 53%, 57%
CMY	0.3019, 0.4745, 0.4315
CMYK	0.00, 0.25, 0.19, 0.30
HSL	345°, 22%, 61%
HSV	345°, 25%, 70%
XYZ	31.9961, 28.5595, 30.6014
YIQ	148.4100, 22.6930, 12.7490

Conversions

Conversions Part 2

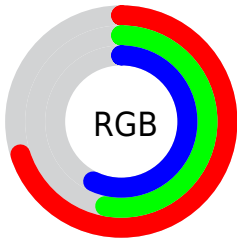
Format	Color
RYB	178, 134, 145
Decimal	11699857
CIELab	60.39, 18.55, 0.70
CIELCh	60, 18.564, 2.169
Yxy	28.5595, 0.3510, 0.3133
Android (android.graphics.Color)	4289889937 (0xFFB28691)
YUV	148.4100, -1.6811, 25.9504
Hunter-Lab	53.4411, 13.3492, 3.4581

Details

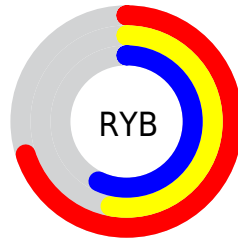
The Yxy color **28.5595, 0.3510, 0.3133** is a light color, and the websafe version is hex **CC9999**. A complement of this color would be **39.7061, 0.2847, 0.3454**, and the grayscale version is **29.7949, 0.3127, 0.3290**.

A 20% lighter version of the original color is **57.1566, 0.3427, 0.3158**, and **11.5268, 0.3647, 0.3070** is the 20% darker color. If you saturate the color by 10%, you get **23.6589, 0.3728, 0.3066**, and if you desaturate by 10%, it is **34.3395, 0.3331, 0.3199**.

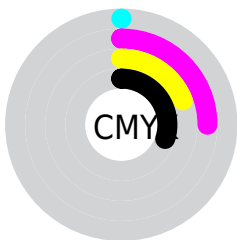
Distribution



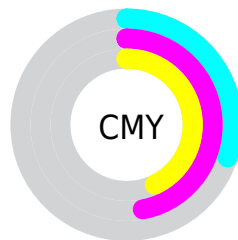
- Red (70%)
- Green (53%)
- Blue (57%)



- Red (70%)
- Yellow (53%)
- Blue (57%)



- Cyan (0%)
- Magenta (25%)
- Yellow (19%)
- Black (30%)





- Cyan (30%)
- Magenta (47%)
- Yellow (43%)

Brightness & Saturation Gradients


These gradients show how the Yxy color 28.5595, 0.3510, 0.3133 changes by changing the brightness by 10 percent. The first figure shows a shift by +10% for each color and the second figure -10%.

Similar to the brightness gradients but the following saturation gradients show a change of the Yxy color 28.5595, 0.3510, 0.3133 by changing the saturation by 10% instead.


 28.5595, 0.3510,
0.3133


 28.5595, 0.3510,
0.3133


295.1308, 0.3303,
0.3219

 18.7478, 0.3568,
0.3109


 57.3765, 0.3430,
0.3166

 11.4882, 0.3646,
0.3076


 77.1506, 0.3402,
0.3178

 6.3962, 0.3758,
0.3030


 101.0143, 0.3378,
0.3187

 3.0875, 0.3930,
0.2957

129.3520, 0.3358,
0.3196

 1.1776, 0.4231,
0.2829

162.5482, 0.3341,
0.3203

 0.0433, 0.9195,
0.0805

200.9871, 0.3327,

 0.0000, 0.0000,

0.3209

0.0000

245.0532, 0.3314,
0.3214

■ 28.5595, 0.3510,
0.3133

■ 28.5595, 0.3510,
0.3133

■ 23.6589, 0.3728,
0.3066

■ 34.3395, 0.3331,
0.3199

■ 19.5906, 0.3992,
0.3002

■ 41.0352, 0.3186,
0.3262

■ 16.3092, 0.4303,
0.2946

■ 48.6854, 0.3068,
0.3320

■ 13.7632, 0.4659,
0.2909

■ 57.3257, 0.2971,
0.3374

■ 11.8951, 0.5042,
0.2900

■ 66.9899, 0.2893,
0.3423

■ 10.6384, 0.5425,
0.2928

■ 77.7099, 0.2828,
0.3468

■ 9.9130, 0.5767,
0.2997

■ 87.1906, 0.2771,
0.3470

■ 9.6510, 0.5926,
0.3038

■ 88.0080, 0.2706,
0.3322

■ 88.2065, 0.2691,
0.3289

Harmonies

Analogous

The Analogous color harmony consists of three colors that are next to each other on the color wheel.



28.5595, 0.3218, 0.2926



28.5595, 0.3510, 0.3133



28.5595, 0.3700, 0.3384

Triad

The Triadic color harmony groups three colors that are evenly spaced from another and form a triangle on the color wheel.



28.5595, 0.3510, 0.3133



28.5595, 0.3322, 0.3830



28.5595, 0.2561, 0.2919

Complementary

The Complementary color scheme is a pair of colors which are on the opposite of each other on the color wheel.



28.5595, 0.3510, 0.3133



39.7061, 0.2847, 0.3454

Split Complementary

Split-complementary colors differ from the complementary color scheme. The scheme consists of three colors, the original color and two neighbors of the complement color.



28.5595, 0.2586, 0.3151



28.5595, 0.3510, 0.3133



28.5595, 0.3016, 0.3700

Square

The Square scheme is like the rectangle color scheme, but the four colors are evenly spaced on the color wheel.



28.5595, 0.3510, 0.3133



28.5595, 0.3584, 0.3795



28.5595, 0.2749, 0.3442



28.5595, 0.2677, 0.2799

Rectangle

The Rectangle color scheme consists of four colors that form a rectangle on the color wheel.



28.5595, 0.3510, 0.3133



28.5595, 0.3737, 0.3550



28.5595, 0.2749, 0.3442



28.5595, 0.2553, 0.2985

Sweetspot

The Sweet Spot groups the original color and five complimentary colors.



28.5608, 0.3510, 0.3133



71.3364, 0.3218, 0.3247



28.4824, 0.3040, 0.2665



15.6415, 0.3226, 0.3244



91.1408, 0.3127, 0.3290



17.8868, 0.3127, 0.3290

Same Dimension

The Same Dimension uses a secret algorithm to generate beautiful new colors.



28.5608, 0.3510, 0.3133



46.4448, 0.3631, 0.3094



31.4402, 0.3599, 0.3450



8.5389, 0.3249, 0.3233



6.9131, 0.5898, 0.3023



0.2270, 0.5105, 0.2586

Inverse Universe

The Inverse Universe completely reimagines the original color for something new.



28.5608, 0.3510, 0.3133



46.4448, 0.3631, 0.3094



35.9245, 0.2756, 0.3124



8.5389, 0.3249, 0.3233



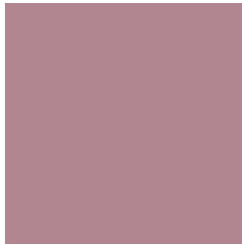
6.9131, 0.5898, 0.3023



0.2270, 0.5105, 0.2586

Previews

White Background



This preview shows how the Yxy color 28.5595, 0.3510, 0.3133 looks on a white background.

Color Contrast Check

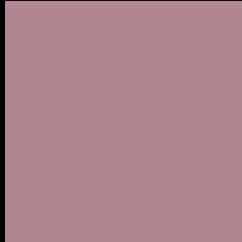
Large Text (above 18pt) WCAG AA ✓ Pass

Any Text WCAG AA ✗ Fail

Large Text (above 18pt) WCAG AAA ✗ Fail

Any Text WCAG AAA ✗ Fail

Black Background



This preview shows how the Yxy color 28.5595, 0.3510, 0.3133 looks on a black background.

Color Contrast Check

Large Text (above 18pt) WCAG AA ✓ Pass

Any Text WCAG AA ✓ Pass

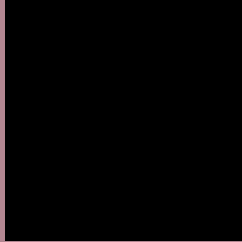
Large Text (above 18pt) WCAG AAA ✓ Pass

Any Text WCAG AAA × Fail

If you want to check with other color combinations, try the [Color Contrast Checker](#).

Yxy 28.5595, 0.3510, 0.3133

Background



This preview shows how black text looks on a background with the Yxy color 28.5595, 0.3510, 0.3133.



This preview shows how white text looks on a background with the Yxy color 28.5595, 0.3510, 0.3133.

Color Blindness Simulation

Color vision deficiency is a very complex topic, and I could not describe the different causes any better than Wikipedia does, so if you want to learn more, you should check out their [article about color blindness](#).

Dichromacy



Original Color

28.5595, 0.3510, 0.3133

Protanopia

28.6882, 0.3090, 0.3195

Deuteranopia

28.6404, 0.3315, 0.3245



Tritanopia

28.5288, 0.3521, 0.3147

Trichromacy



Original Color

28.5595, 0.3510, 0.3133

Protanomaly

28.4888, 0.3230, 0.3168

Deuteranomaly

28.4061, 0.3387, 0.3201

Tritanomaly

28.5288, 0.3521, 0.3147

Monochromacy



Original Color

28.5595, 0.3510, 0.3133

Achromatopsia

29.6138, 0.3127, 0.3290

Achromatomaly

29.1224, 0.3259, 0.3229

CSS Examples

Text

The CSS property to change the color of the text to Yxy 28.5595, 0.3510, 0.3133 is called "color". The color property can be set on classes, ids or directly on the HTML element.

This example shows how text in the color `rgb(178, 134, 145)` looks like.

```
.text, #text, p{  
    color:rgb(178, 134, 145)  
}
```

If you want to add a text shadow in that color use the text-shadow property, you can generate a text shadow directly with our [CSS Text Shadow Generator](#).

Here you see how black text with a 4 pixel rgb(178, 134, 145) colored shadow looks like.

```
.shadow{ text-shadow: 4px 4px 2px rgb(178, 134, 145) }
```

Border

The CSS property to change the border of an element to Yxy 28.5595, 0.3510, 0.3133 is called "border". The border property can be set on classes, ids or directly on the HTML element.

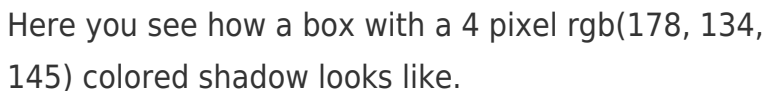
This example shows the color as border, it can be applied via the CSS property "border" or "border-color".

```
.border, #border, table{ border:4px solid rgb(178, 134, 145) }
```

If only the border color should be changed use the property `border-color`.

```
.border{ border-color:rgb(178, 134, 145) }
```

If you want to add a box shadow in that color use:



Here you see how a box with a 4 pixel `rgb(178, 134, 145)` colored shadow looks like.

```
.boxshadow{ -moz-box-shadow:4px 4px 4px 4px rgb(178, 134, 145); -webkit-box-shadow:4px 4px 4px 4px rgb(178, 134, 145); box-shadow:4px 4px 4px 4px rgb(178, 134, 145) }
```


Background

The CSS property to change the background color of an element to Yxy 28.5595, 0.3510, 0.3133 is called "background". The background property can be set on classes, ids or directly on the HTML element.

```
.background, #background, body{  
background: rgb(178, 134, 145) }
```

If only the background color should be changed can be used:

```
.background{ background-color: rgb(178,  
134, 145) }
```

This example shows the color as background, it is applied via the CSS property "background".

To optimize and compress your CSS code, you can use our [online CSS compressor and optimizer](#) based on csstidy. If you want to create a linear or radial gradient as background or border, check our [CSS Gradient Generator](#).

Hey! You found this booklet interesting? Support Converting Colors with the new Membership Option!

The pro membership hides all ads, plus gives you double the colors in the color bucket, and more awesome pro features!

[Learn more, Memberships starting at \\$2.50/m!](#)

**Follow me
on Twitter!**

@ConvertingColor