

Converting Colors

$Y_{xy}(28.9284, 0.3622, 0.3577)$

Have a look what the booklet for
Yxy(28.9284, 0.3622, 0.3577)
contains.

Yxy(28.8046, 0.3619, 0.3564)	3
Conversions	4
Details	6
Harmonies	12
Previews	24
Color Blindness Simulation	27
CSS Examples	30

Color

Yxy(28.8046, 0.3619, 0.3564)

Conversions

Conversions Part 1

Format	Color
Hex	A88D7B
RGB	168, 141, 123
RGB Percent	66%, 55%, 48%
CMY	0.3412, 0.4470, 0.5175
CMYK	0.00, 0.16, 0.27, 0.34
HSL	24°, 21%, 57%
HSV	24°, 27%, 66%
XYZ	29.2491, 28.8046, 22.7673
YIQ	147.0210, 21.8700, 0.1260

Conversions

Conversions Part 2

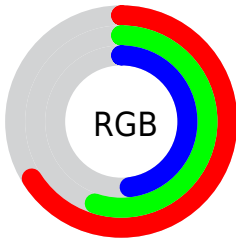
Format	Color
R_{YB}	168, 153, 123
Decimal	11046267
CIE _{Lab}	60.61, 7.36, 13.38
CIE _{LCh}	61, 15.266, 61.186
Yxy	28.8046, 0.3619, 0.3564
Android (android.graphics.Color)	4289236347 (0xFFA88D7B)
YUV	147.0210, -11.8424, 18.3986
Hunter-Lab	53.6699, 3.3569, 12.4176

Details

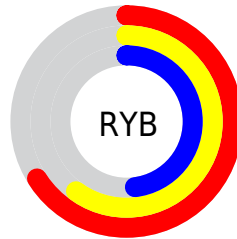
The Yxy color $28.8046, 0.3619, 0.3564$ is a dark color, and the websafe version is hex `CC9999`. A complement of this color would be $28.8603, 0.2717, 0.2999$, and the grayscale version is $29.2310, 0.3127, 0.3290$.

A 20% lighter version of the original color is $57.9727, 0.3522, 0.3521$, and $11.6214, 0.3794, 0.3660$ is the 20% darker color. If you saturate the color by 10%, you get $25.5805, 0.3856, 0.3672$, and if you desaturate by 10%, it is $32.3744, 0.3412, 0.3458$.

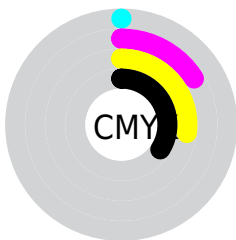
Distribution



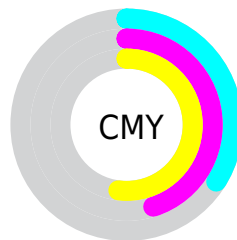
- Red (66%)
- Green (55%)
- Blue (48%)



- Red (66%)
- Yellow (60%)
- Blue (48%)



- Cyan (0%)
- Magenta (16%)
- Yellow (27%)
- Black (34%)




- Cyan (34%)
- Magenta (45%)
- Yellow (52%)

Brightness & Saturation Gradients


These gradients show how the Yxy color 28.8046, 0.3619, 0.3564 changes by changing the brightness by 10 percent. The first figure shows a shift by +10% for each color and the second figure -10%.

Similar to the brightness gradients but the following saturation gradients show a change of the Yxy color 28.8046, 0.3619, 0.3564 by changing the saturation by 10% instead.


 28.8046, 0.3619,
0.3564

 28.8046, 0.3619,
0.3564


296.2919, 0.3352,
0.3420

 18.9331, 0.3693,
0.3602


 57.7665, 0.3516,
0.3510

 11.6219, 0.3794,
0.3651


 77.6256, 0.3480,
0.3491

 6.4868, 0.3937,
0.3718


 101.5827, 0.3449,
0.3474

 3.1433, 0.4155,
0.3813

130.0222, 0.3424,
0.3460

 1.2070, 0.4713,
0.4115

163.3285, 0.3402,
0.3448

 0.0674, 0.7833,
0.2167

201.8859, 0.3383,

 0.0000, 0.0000,

0.3438

0.0000

246.0789, 0.3366,
0.3428

■ 28.8046, 0.3619,
0.3564

■ 28.8046, 0.3619,
0.3564

■ 25.5805, 0.3856,
0.3672

■ 32.3744, 0.3412,
0.3458

■ 22.6873, 0.4125,
0.3775

■ 36.2962, 0.3234,
0.3356

■ 20.1147, 0.4420,
0.3867

■ 40.5814, 0.3080,
0.3260

■ 17.8505, 0.4735,
0.3935

■ 45.2392, 0.2948,
0.3171

■ 15.8815, 0.5052,
0.3968

■ 50.2789, 0.2835,
0.3090

■ 14.1932, 0.5349,
0.3954

■ 55.7091, 0.2738,
0.3015

■ 12.7680, 0.5606,
0.3891

■ 61.5385, 0.2653,
0.2947

■ 12.3561, 0.5685,
0.3868

■ 67.6177, 0.2593,
0.2910

■ 73.1258, 0.2608,
0.3028

Harmonies

Analogous

The Analogous color harmony consists of three colors that are next to each other on the color wheel.



28.8046, 0.3592, 0.3364



28.8046, 0.3619, 0.3564



28.8046, 0.3509, 0.3702

Triad

The Triadic color harmony groups three colors that are evenly spaced from another and form a triangle on the color wheel.



28.8046, 0.3619, 0.3564



28.8046, 0.2823, 0.3423



28.8046, 0.2945, 0.2886

Complementary

The Complementary color scheme is a pair of colors which are on the opposite of each other on the color wheel.



28.8046, 0.3619, 0.3564



28.8603, 0.2717, 0.2999

Split Complementary

Split-complementary colors differ from the complementary color scheme. The scheme consists of three colors, the original color and two neighbors of the complement color.



28.8046, 0.2751, 0.2886



28.8046, 0.3619, 0.3564



28.8046, 0.2683, 0.3186

Square

The Square scheme is like the rectangle color scheme, but the four colors are evenly spaced on the color wheel.



28.8046, 0.3619, 0.3564



28.8046, 0.3046, 0.3628



28.8046, 0.2658, 0.2992



28.8046, 0.3194, 0.2983

Rectangle

The Rectangle color scheme consists of four colors that form a rectangle on the color wheel.



28.8046, 0.3619, 0.3564



28.8046, 0.3375, 0.3736



28.8046, 0.2658, 0.2992



28.8046, 0.2871, 0.2874

Sweetspot

The Sweet Spot groups the original color and five complimentary colors.



28.8059, 0.3619, 0.3564



64.8467, 0.3257, 0.3369



24.7247, 0.3351, 0.2876



13.9014, 0.3282, 0.3384



84.8088, 0.3127, 0.3290



15.4872, 0.3127, 0.3290

Same Dimension

The Same Dimension uses a secret algorithm to generate beautiful new colors.



28.8059, 0.3619, 0.3564



48.7933, 0.3753, 0.3627



35.8605, 0.3540, 0.3873



8.0161, 0.3276, 0.3381



9.4264, 0.5668, 0.3882



0.3300, 0.5078, 0.4350

Inverse Universe

The Inverse Universe completely reimagines the original color for something new.



28.8603, 0.2717, 0.2999



48.9025, 0.2628, 0.2925



22.5512, 0.2682, 0.2630



8.0213, 0.2987, 0.3198



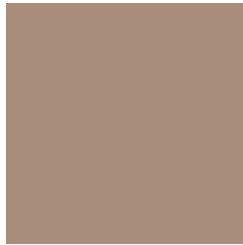
9.2439, 0.1875, 0.1949



0.3209, 0.2012, 0.2442

Previews

White Background



This preview shows how the Yxy color 28.8046, 0.3619, 0.3564 looks on a white background.

Color Contrast Check

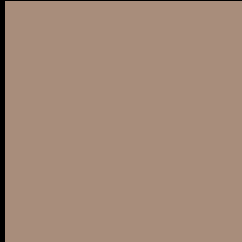
Large Text (above 18pt) WCAG AA ✓ Pass

Any Text WCAG AA × Fail

Large Text (above 18pt) WCAG AAA × Fail

Any Text WCAG AAA × Fail

Black Background



This preview shows how the Yxy color 28.8046, 0.3619, 0.3564 looks on a black background.

Color Contrast Check

Large Text (above 18pt) WCAG AA ✓ Pass

Any Text WCAG AA ✓ Pass

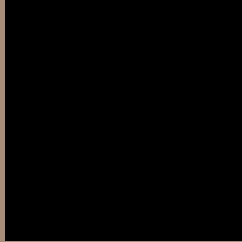
Large Text (above 18pt) WCAG AAA ✓ Pass

Any Text WCAG AAA × Fail

If you want to check with other color combinations, try the [Color Contrast Checker](#).

Yxy 28.8046, 0.3619, 0.3564

Background



This preview shows how black text looks on a background with the Yxy color 28.8046, 0.3619, 0.3564.



This preview shows how white text looks on a background with the Yxy color 28.8046, 0.3619, 0.3564.

Color Blindness Simulation

Color vision deficiency is a very complex topic, and I could not describe the different causes any better than Wikipedia does, so if you want to learn more, you should check out their [article about color blindness](#).

Dichromacy



Original Color

28.8046, 0.3619, 0.3564

Protanopia

28.9085, 0.3424, 0.3625

Deuteranopia

28.9148, 0.3631, 0.3563



Tritanopia

28.6874, 0.3390, 0.3129

Trichromacy



Original Color

28.8046, 0.3619, 0.3564

Protanomaly

28.7727, 0.3496, 0.3604

Deuteranomaly

28.9148, 0.3631, 0.3563

Tritanomaly

28.5871, 0.3475, 0.3276

Monochromacy



Original Color

28.8046, 0.3619, 0.3564

Achromatopsia

29.1771, 0.3127, 0.3290

Achromatomaly

29.0543, 0.3304, 0.3400

CSS Examples

Text

The CSS property to change the color of the text to Yxy 28.8046, 0.3619, 0.3564 is called "color". The color property can be set on classes, ids or directly on the HTML element.

This example shows how text in the color `rgb(168, 141, 123)` looks like.

```
.text, #text, p{  
    color:rgb(168, 141, 123)  
}
```

If you want to add a text shadow in that color use the text-shadow property, you can generate a text shadow directly with our [CSS Text Shadow Generator](#).

Here you see how black text with a 4 pixel rgb(168, 141, 123) colored shadow looks like.

```
.shadow{ text-shadow: 4px 4px 2px rgb(168, 141, 123) }
```

Border

The CSS property to change the border of an element to Yxy 28.8046, 0.3619, 0.3564 is called "border". The border property can be set on classes, ids or directly on the HTML element.

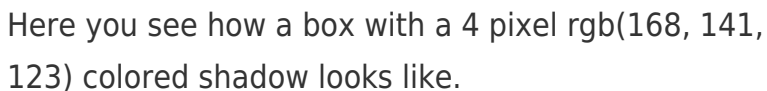
This example shows the color as border, it can be applied via the CSS property "border" or "border-color".

```
.border, #border, table{ border:4px solid rgb(168, 141, 123) }
```

If only the border color should be changed use the property `border-color`.

```
.border{ border-color:rgb(168, 141, 123) }
```

If you want to add a box shadow in that color use:



Here you see how a box with a 4 pixel `rgb(168, 141, 123)` colored shadow looks like.

```
.boxshadow{ -moz-box-shadow:4px 4px 4px 4px rgb(168, 141, 123); -webkit-box-shadow:4px 4px 4px 4px rgb(168, 141, 123); box-shadow:4px 4px 4px 4px rgb(168, 141, 123) }
```


Background

The CSS property to change the background color of an element to Yxy 28.8046, 0.3619, 0.3564 is called "background". The background property can be set on classes, ids or directly on the HTML element.

```
.background, #background, body{  
background: rgb(168, 141, 123) }
```

If only the background color should be changed can be used:

```
.background{ background-color: rgb(168,  
141, 123) }
```

This example shows the color as background, it is applied via the CSS property "background".

To optimize and compress your CSS code, you can use our [online CSS compressor and optimizer](#) based on csstidy. If you want to create a linear or radial gradient as background or border, check our [CSS Gradient Generator](#).

Hey! You found this booklet interesting? Support Converting Colors with the new Membership Option!

The pro membership hides all ads, plus gives you double the colors in the color bucket, and more awesome pro features!

[Learn more, Memberships starting at \\$2.50/m!](#)

**Follow me
on Twitter!**

@ConvertingColor