

Converting Colors

$Y_{xy}(28.9519, 0.3675, 0.3608)$

Have a look what the booklet for
Yxy(28.9519, 0.3675, 0.3608)
contains.

Yxy(28.9519, 0.3675, 0.3608)	3
Conversions	4
Details	6
Harmonies	12
Previews	24
Color Blindness Simulation	27
CSS Examples	30

Color

Yxy(28.9519, 0.3675, 0.3608)

Conversions

Conversions Part 1

Format	Color
Hex	AA8D78
RGB	170, 141, 120
RGB Percent	67%, 55%, 47%
CMY	0.3334, 0.4470, 0.5294
CMYK	0.00, 0.17, 0.29, 0.33
HSL	25°, 23%, 57%
HSV	25°, 29%, 67%
XYZ	29.4895, 28.9519, 21.8022
YIQ	147.2770, 24.0250, -0.3830

Conversions

Conversions Part 2

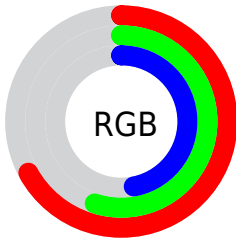
Format	Color
R_{YB}	170, 156, 120
Decimal	11177336
CIE Lab	60.74, 7.72, 15.30
CIE LCh	61, 17.139, 63.234
Yxy	28.9519, 0.3675, 0.3608
Android (android.graphics.Color)	4289367416 (0xFFAA8D78)
YUV	147.2770, -13.4476, 19.9281
Hunter-Lab	53.8070, 3.6668, 13.6410

Details

The Yxy color $28.9519, 0.3675, 0.3608$ is a dark color, and the websafe version is hex `CC9999`. A complement of this color would be $28.3793, 0.2674, 0.2948$, and the grayscale version is $29.3475, 0.3127, 0.3290$.

A 20% lighter version of the original color is $58.1775, 0.3563, 0.3554$, and $11.7190, 0.3876, 0.3719$ is the 20% darker color. If you saturate the color by 10%, you get $25.7988, 0.3917, 0.3721$, and if you desaturate by 10%, it is $32.4394, 0.3462, 0.3495$.

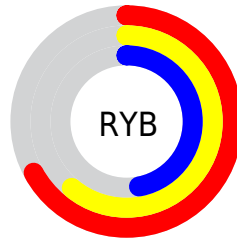
Distribution



Red (67%)

Green (55%)

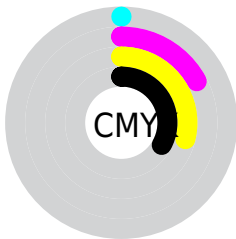
Blue (47%)



Red (67%)

Yellow (61%)

Blue (47%)

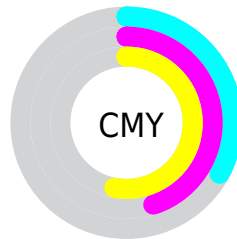


Cyan (0%)

Magenta (17%)

Yellow (29%)

Black (33%)



Cyan (33%)


Magenta (45%)


Yellow (53%)

Brightness & Saturation Gradients


These gradients show how the Yxy color 28.9519, 0.3675, 0.3608 changes by changing the brightness by 10 percent. The first figure shows a shift by +10% for each color and the second figure -10%.


Similar to the brightness gradients but the following saturation gradients show a change of the Yxy color 28.9519, 0.3675, 0.3608 by changing the saturation by 10% instead.


 28.9519, 0.3675,
0.3608


 28.9519, 0.3675,
0.3608


296.9879, 0.3378,
0.3442


 19.0444, 0.3757,
0.3651


 58.0007, 0.3561,
0.3546

 11.7024, 0.3869,
0.3708


 77.9107, 0.3520,
0.3523

 6.5414, 0.4026,
0.3784


 101.9238, 0.3486,
0.3504

 3.1770, 0.4264,
0.3889

130.4243, 0.3458,
0.3488

 1.2248, 0.4938,
0.4277

163.7965, 0.3433,
0.3474

 0.0818, 0.7649,
0.2351

202.4250, 0.3412,

 0.0000, 0.0000,

0.3462

0.0000

246.6940, 0.3394,
0.3451

■ 28.9519, 0.3675,
0.3608

■ 28.9519, 0.3675,
0.3608

■ 25.7988, 0.3917,
0.3721

■ 32.4394, 0.3462,
0.3495

■ 22.9656, 0.4188,
0.3827

■ 36.2674, 0.3278,
0.3387

■ 20.4423, 0.4482,
0.3919

■ 40.4467, 0.3118,
0.3284

■ 18.2171, 0.4790,
0.3983

■ 44.9866, 0.2981,
0.3189

■ 16.2768, 0.5094,
0.4009

■ 49.8959, 0.2863,
0.3101

■ 14.6072, 0.5373,
0.3985

■ 55.1830, 0.2761,
0.3020

■ 13.1872, 0.5614,
0.3917

■ 60.8562, 0.2672,
0.2947

■ 13.1095, 0.5628,
0.3913

■ 66.8599, 0.2601,
0.2890

■ 72.1794, 0.2615,
0.3004

Harmonies

Analogous

The Analogous color harmony consists of three colors that are next to each other on the color wheel.



28.9519, 0.3656, 0.3387



28.9519, 0.3675, 0.3608



28.9519, 0.3541, 0.3758

Triad

The Triadic color harmony groups three colors that are evenly spaced from another and form a triangle on the color wheel.



28.9519, 0.3675, 0.3608



28.9519, 0.2772, 0.3421



28.9519, 0.2940, 0.2844

Complementary

The Complementary color scheme is a pair of colors which are on the opposite of each other on the color wheel.



28.9519, 0.3675, 0.3608



28.3793, 0.2674, 0.2948

Split Complementary

Split-complementary colors differ from the complementary color scheme. The scheme consists of three colors, the original color and two neighbors of the complement color.



28.9519, 0.2718, 0.2835



28.9519, 0.3675, 0.3608



28.9519, 0.2625, 0.3155

Square

The Square scheme is like the rectangle color scheme, but the four colors are evenly spaced on the color wheel.



28.9519, 0.3675, 0.3608



28.9519, 0.3016, 0.3658



28.9519, 0.2606, 0.2943



28.9519, 0.3221, 0.2959

Rectangle

The Rectangle color scheme consists of four colors that form a rectangle on the color wheel.



28.9519, 0.3675, 0.3608



28.9519, 0.3387, 0.3791



28.9519, 0.2606, 0.2943



28.9519, 0.2856, 0.2828

Sweetspot

The Sweet Spot groups the original color and five complimentary colors.



28.9532, 0.3675, 0.3608



65.9951, 0.3274, 0.3384



24.1513, 0.3399, 0.2857



14.4879, 0.3298, 0.3399



86.8899, 0.3127, 0.3290



16.2647, 0.3127, 0.3290

Same Dimension

The Same Dimension uses a secret algorithm to generate beautiful new colors.



28.9532, 0.3675, 0.3608



48.9093, 0.3822, 0.3679



37.1059, 0.3577, 0.3954



8.0413, 0.3276, 0.3385



9.7513, 0.5610, 0.3928



0.3391, 0.5037, 0.4382

Inverse Universe

The Inverse Universe completely reimagines the original color for something new.



28.3793, 0.2674, 0.2948



47.6974, 0.2578, 0.2863



21.3507, 0.2629, 0.2525



7.9955, 0.2987, 0.3193



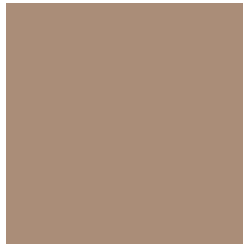
8.7461, 0.1855, 0.1877



0.3106, 0.1999, 0.2395

Previews

White Background



This preview shows how the Yxy color 28.9519, 0.3675, 0.3608 looks on a white background.

Color Contrast Check

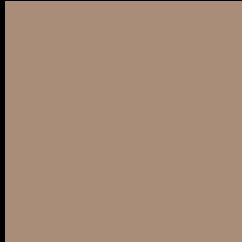
Large Text (above 18pt) WCAG AA ✓ Pass

Any Text WCAG AA × Fail

Large Text (above 18pt) WCAG AAA × Fail

Any Text WCAG AAA × Fail

Black Background



This preview shows how the Yxy color 28.9519, 0.3675, 0.3608 looks on a black background.

Color Contrast Check

Large Text (above 18pt) WCAG AA ✓ Pass

Any Text WCAG AA ✓ Pass

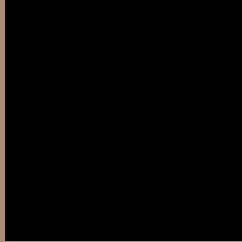
Large Text (above 18pt) WCAG AAA ✓ Pass

Any Text WCAG AAA × Fail

If you want to check with other color combinations, try the [Color Contrast Checker](#).

Yxy 28.9519, 0.3675, 0.3608

Background



This preview shows how black text looks on a background with the Yxy color 28.9519, 0.3675, 0.3608.



This preview shows how white text looks on a background with the Yxy color 28.9519, 0.3675, 0.3608.

Color Blindness Simulation

Color vision deficiency is a very complex topic, and I could not describe the different causes any better than Wikipedia does, so if you want to learn more, you should check out their [article about color blindness](#).

Dichromacy



Original Color

28.9519, 0.3675, 0.3608

Protanopia

28.9564, 0.3455, 0.3655

Deuteranopia

28.9519, 0.3675, 0.3608



Tritanopia

28.9137, 0.3413, 0.3130

Trichromacy



Original Color

28.9519, 0.3675, 0.3608

Protanomaly

28.8252, 0.3528, 0.3635

Deuteranomaly

28.9519, 0.3675, 0.3608

Tritanomaly

28.7826, 0.3509, 0.3291

Monochromacy



Original Color

28.9519, 0.3675, 0.3608

Achromatopsia

29.1771, 0.3127, 0.3290

Achromatomaly

29.0255, 0.3314, 0.3416

CSS Examples

Text

The CSS property to change the color of the text to Yxy 28.9519, 0.3675, 0.3608 is called "color". The color property can be set on classes, ids or directly on the HTML element.

This example shows how text in the color `rgb(170, 141, 120)` looks like.

```
.text, #text, p{  
    color:rgb(170, 141, 120)  
}
```

If you want to add a text shadow in that color use the text-shadow property, you can generate a text shadow directly with our [CSS Text Shadow Generator](#).

Here you see how black text with a 4 pixel rgb(170, 141, 120) colored shadow looks like.

```
.shadow{ text-shadow: 4px 4px 2px rgb(170, 141, 120) }
```

Border

The CSS property to change the border of an element to Yxy 28.9519, 0.3675, 0.3608 is called "border". The border property can be set on classes, ids or directly on the HTML element.

This example shows the color as border, it can be applied via the CSS property "border" or "border-color".

```
.border, #border, table{ border:4px solid rgb(170, 141, 120) }
```

If only the border color should be changed use the property `border-color`.

```
.border{ border-color:rgb(170, 141, 120) }
```

If you want to add a box shadow in that color use:

Here you see how a box with a 4 pixel `rgb(170, 141, 120)` colored shadow looks like.

```
.boxshadow{ -moz-box-shadow:4px 4px 4px  
4px rgb(170, 141, 120); -webkit-box-  
shadow:4px 4px 4px 4px rgb(170, 141, 120);  
box-shadow:4px 4px 4px 4px rgb(170, 141,  
120) }
```


Background

The CSS property to change the background color of an element to Yxy 28.9519, 0.3675, 0.3608 is called "background". The background property can be set on classes, ids or directly on the HTML element.

```
.background, #background, body{  
background: rgb(170, 141, 120) }
```

If only the background color should be changed can be used:

```
.background{ background-color: rgb(170,  
141, 120) }
```

This example shows the color as background, it is applied via the CSS property "background".

To optimize and compress your CSS code, you can use our [online CSS compressor and optimizer](#) based on csstidy. If you want to create a linear or radial gradient as background or border, check our [CSS Gradient Generator](#).

Hey! You found this booklet interesting? Support Converting Colors with the new Membership Option!

The pro membership hides all ads, plus gives you double the colors in the color bucket, and more awesome pro features!

[Learn more, Memberships starting at \\$2.50/m!](#)

**Follow me
on Twitter!**

@ConvertingColor