

# Converting Colors

$Y_{xy}(29.1784, 0.3668, 0.3218)$

Have a look what the booklet for  
Yxy(29.1784, 0.3668, 0.3218)  
contains.

<b>Yxy(29.3534, 0.3669, 0.3221)</b> .....	3
<b>Conversions</b> .....	4
<b>Details</b> .....	6
<b>Harmonies</b> .....	12
<b>Previews</b> .....	24
<b>Color Blindness Simulation</b> .....	27
<b>CSS Examples</b> .....	30

# Color

**Yxy(29.3534, 0.3669, 0.3221)**

# Conversions

## Conversions Part 1

Format	Color
Hex	BA868B
RGB	186, 134, 139
RGB Percent	73%, 53%, 55%
CMY	0.2706, 0.4745, 0.4548
CMYK	0.00, 0.28, 0.25, 0.27
HSL	354°, 27%, 63%
HSV	354°, 28%, 73%
XYZ	33.4361, 29.3534, 28.3418
YIQ	150.1180, 29.3870, 12.5790

# Conversions

## Conversions Part 2

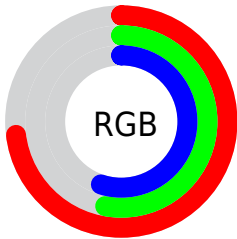
<b>Format</b>	<b>Color</b>
R <sub>Y</sub> B	186, 134, 139
Decimal	12224139
CIE Lab	61.09, 20.67, 5.22
CIE LCh	61, 21.317, 14.172
Yxy	29.3534, 0.3669, 0.3221
Android (android.graphics.Color)	4290414219 (0xFFBA868B)
YUV	150.1180, -5.4812, 31.4685
Hunter-Lab	54.1788, 15.3473, 6.9095

# Details

The Yxy color **29.3534, 0.3669, 0.3221** is a light color, and the websafe version is hex **CC9999**. A complement of this color would be **43.5195, 0.2760, 0.3362**, and the grayscale version is **30.5677, 0.3127, 0.3290**.

A 20% lighter version of the original color is **58.8269, 0.3559, 0.3248**, and **11.9674, 0.3869, 0.3195** is the 20% darker color. If you saturate the color by 10%, you get **24.2033, 0.3955, 0.3196**, and if you desaturate by 10%, it is **35.4860, 0.3437, 0.3247**.

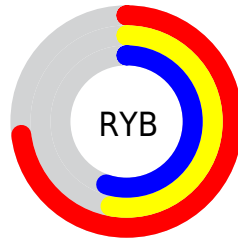
# Distribution



Red (73%)

Green (53%)

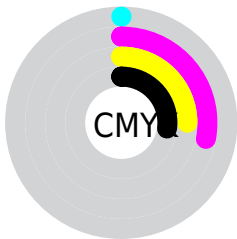
Blue (55%)



Red (73%)

Yellow (53%)

Blue (55%)

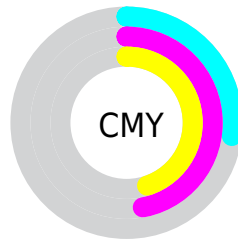


Cyan (0%)

Magenta (28%)

Yellow (25%)

Black (27%)



Cyan (27%)

Magenta (47%)


Yellow (45%)

# Brightness & Saturation Gradients

These gradients show how the Yxy color 29.3534, 0.3669, 0.3221 changes by changing the brightness by 10 percent. The first figure shows a shift by +10% for each color and the second figure -10%.

Similar to the brightness gradients but the following saturation gradients show a change of the Yxy color 29.3534, 0.3669, 0.3221 by changing the saturation by 10% instead.





 29.3534, 0.3669,  
0.3221


 29.3534, 0.3669,  
0.3221


298.8788, 0.3375,  
0.3262


 19.3483, 0.3751,  
0.3208


 58.6381, 0.3556,  
0.3238

 11.9222, 0.3861,  
0.3189


 78.6865, 0.3516,  
0.3244

 6.6907, 0.4019,  
0.3161


 102.8515, 0.3482,  
0.3248

 3.2695, 0.4261,  
0.3113

131.5174, 0.3454,  
0.3252

 1.2740, 0.4678,  
0.3019

165.0688, 0.3430,  
0.3255

 0.1209, 0.8367,  
0.1633

203.8898, 0.3409,

 0.0000, 0.0000,

0.3258

0.0000

248.3650, 0.3391,  
0.3260

■ 29.3534, 0.3669,  
0.3221

■ 29.3534, 0.3669,  
0.3221

■ 24.2033, 0.3955,  
0.3196

■ 35.4860, 0.3437,  
0.3247

■ 19.9807, 0.4300,  
0.3173

■ 42.6440, 0.3250,  
0.3272

■ 16.6316, 0.4703,  
0.3157

■ 50.8729, 0.3099,  
0.3295

■ 14.0948, 0.5146,  
0.3152

■ 60.2141, 0.2978,  
0.3316

■ 12.3010, 0.5589,  
0.3164

■ 70.7071, 0.2879,  
0.3335

■ 11.1695, 0.5975,  
0.3194

■ 82.3891, 0.2799,  
0.3352

■ 10.5770, 0.6247,  
0.3234

■ 89.1786, 0.2731,  
0.3289

■ 10.4822, 0.6291,  
0.3239

# Harmonies

## Analogous

The Analogous color harmony consists of three colors that are next to each other on the color wheel.



29.3534, 0.3370, 0.2962



29.3534, 0.3669, 0.3221



29.3534, 0.3816, 0.3508

# Triad

The Triadic color harmony groups three colors that are evenly spaced from another and form a triangle on the color wheel.



29.3534, 0.3669, 0.3221



29.3534, 0.3208, 0.3871



29.3534, 0.2521, 0.2796

# Complementary

The Complementary color scheme is a pair of colors which are on the opposite of each other on the color wheel.



29.3534, 0.3669, 0.3221



43.5195, 0.2760, 0.3362

# Split Complementary

Split-complementary colors differ from the complementary color scheme. The scheme consists of three colors, the original color and two neighbors of the complement color.



29.3534, 0.2485, 0.3011



29.3534, 0.3669, 0.3221



29.3534, 0.2868, 0.3653

# Square

The Square scheme is like the rectangle color scheme, but the four colors are evenly spaced on the color wheel.



29.3534, 0.3669, 0.3221



29.3534, 0.3538, 0.3903



29.3534, 0.2608, 0.3327



29.3534, 0.2710, 0.2720



# Rectangle

The Rectangle color scheme consists of four colors that form a rectangle on the color wheel.



29.3534, 0.3669, 0.3221



29.3534, 0.3803, 0.3684



29.3534, 0.2608, 0.3327



29.3534, 0.2491, 0.2853

# Sweetspot

The Sweet Spot groups the original color and five complimentary colors.



29.3548, 0.3669, 0.3221



77.0497, 0.3253, 0.3271



30.3953, 0.3106, 0.2594



16.5085, 0.3278, 0.3267



95.5105, 0.3127, 0.3290



19.5994, 0.3127, 0.3290



# Same Dimension

The Same Dimension uses a secret algorithm to generate beautiful new colors.



29.3548, 0.3669, 0.3221



46.8449, 0.3851, 0.3204



35.5362, 0.3650, 0.3579



9.0260, 0.3273, 0.3268



7.0577, 0.6271, 0.3228



0.2535, 0.5829, 0.2985



# Inverse Universe

The Inverse Universe completely reimagines the original color for something new.



29.3548, 0.3669, 0.3221



46.8449, 0.3851, 0.3204



35.5957, 0.2695, 0.2981



9.0260, 0.3273, 0.3268



7.0577, 0.6271, 0.3228

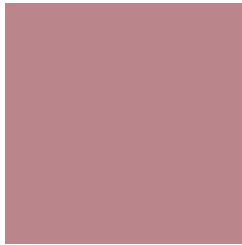


0.2535, 0.5829, 0.2985



# Previews

## White Background



This preview shows how the Yxy color 29.3534, 0.3669, 0.3221 looks on a white background.

## Color Contrast Check

Large Text (above 18pt) WCAG AA ✓ Pass

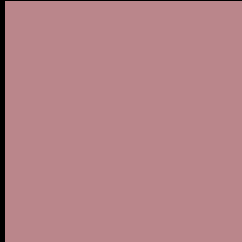
Any Text WCAG AA ✗ Fail

Large Text (above 18pt) WCAG AAA ✗ Fail

Any Text WCAG AAA ✗ Fail



# Black Background



This preview shows how the Yxy color 29.3534, 0.3669, 0.3221 looks on a black background.

## Color Contrast Check

Large Text (above 18pt) WCAG AA ✓ Pass

Any Text WCAG AA ✓ Pass

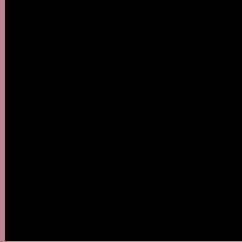
Large Text (above 18pt) WCAG AAA ✓ Pass

Any Text WCAG AAA × Fail

If you want to check with other color combinations, try the [Color Contrast Checker](#).

**Yxy 29.3534, 0.3669, 0.3221**

## **Background**



This preview shows how black text looks on a background with the Yxy color 29.3534, 0.3669, 0.3221.



This preview shows how white text looks on a background with the Yxy color 29.3534, 0.3669, 0.3221.

# Color Blindness Simulation

Color vision deficiency is a very complex topic, and I could not describe the different causes any better than Wikipedia does, so if you want to learn more, you should check out their [article about color blindness](#).

## Dichromacy



### Original Color

29.3534, 0.3669, 0.3221

### Protanopia

29.5221, 0.3178, 0.3306

### Deuteranopia

29.5581, 0.3439, 0.3382



## Tritanopia

29.1973, 0.3626, 0.3152

# Trichromacy



## Original Color

29.3534, 0.3669, 0.3221

## Protanomaly

29.2217, 0.3356, 0.3276

## Deuteranomaly

29.4754, 0.3515, 0.3321

## Tritanomaly

29.1672, 0.3638, 0.3165

# Monochromacy



## Original Color

29.3534, 0.3669, 0.3221

## Achromatopsia

30.4987, 0.3127, 0.3290

## Achromatomaly

29.8084, 0.3310, 0.3260

# CSS Examples

## Text

The CSS property to change the color of the text to Yxy 29.3534, 0.3669, 0.3221 is called "color". The color property can be set on classes, ids or directly on the HTML element.

This example shows how text in the color `rgb(186, 134, 139)` looks like.

```
.text, #text, p{  
    color:rgb(186, 134, 139)  
}
```

If you want to add a text shadow in that color use the text-shadow property, you can generate a text shadow directly with our [CSS Text Shadow Generator](#).

Here you see how black text with a 4 pixel rgb(186, 134, 139) colored shadow looks like.

```
.shadow{ text-shadow: 4px 4px 2px rgb(186, 134, 139) }
```

## Border

The CSS property to change the border of an element to Yxy 29.3534, 0.3669, 0.3221 is called "border". The border property can be set on classes, ids or directly on the HTML element.

This example shows the color as border, it can be applied via the CSS property "border" or "border-color".

```
.border, #border, table{ border:4px solid rgb(186, 134, 139) }
```

If only the border color should be changed use the property `border-color`.

```
.border{ border-color:rgb(186, 134, 139) }
```

If you want to add a box shadow in that color use:

Here you see how a box with a 4 pixel `rgb(186, 134, 139)` colored shadow looks like.

```
.boxshadow{ -moz-box-shadow:4px 4px 4px  
4px rgb(186, 134, 139); -webkit-box-  
shadow:4px 4px 4px 4px rgb(186, 134, 139);  
box-shadow:4px 4px 4px 4px rgb(186, 134,  
139) }
```



# Background

The CSS property to change the background color of an element to Yxy 29.3534, 0.3669, 0.3221 is called "background". The background property can be set on classes, ids or directly on the HTML element.

```
.background, #background, body{  
background: rgb(186, 134, 139) }
```

If only the background color should be changed can be used:

```
.background{ background-color: rgb(186,  
134, 139) }
```

This example shows the color as background, it is applied via the CSS property "background".

To optimize and compress your CSS code, you can use our [online CSS compressor and optimizer](#) based on csstidy. If you want to create a linear or radial gradient as background or border, check our [CSS Gradient Generator](#).

Hey! You found this booklet interesting? Support Converting Colors with the new Membership Option!

The pro membership hides all ads, plus gives you double the colors in the color bucket, and more awesome pro features!

**[Learn more, Memberships starting at \\$2.50/m!](#)**

**Follow me  
on Twitter!**

@ConvertingColor