

Converting Colors

$Yxy(29.4567, 0.3695, 0.3305)$

Have a look what the booklet for
Yxy(29.4567, 0.3695, 0.3305)
contains.

Yxy(29.5479, 0.3686, 0.3306)	3
Conversions	4
Details	6
Harmonies	12
Previews	24
Color Blindness Simulation	27
CSS Examples	30

Color

Yxy(29.5479, 0.3686, 0.3306)

Conversions

Conversions Part 1

Format	Color
Hex	B88887
RGB	184, 136, 135
RGB Percent	72%, 53%, 53%
CMY	0.2784, 0.4666, 0.4706
CMYK	0.00, 0.26, 0.27, 0.28
HSL	1°, 26%, 63%
HSV	1°, 27%, 72%
XYZ	32.9442, 29.5479, 26.8845
YIQ	150.2380, 28.9290, 9.8650

Conversions

Conversions Part 2

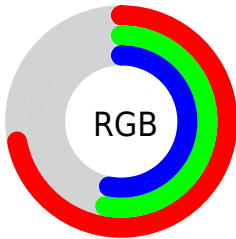
Format	Color
RYB	184, 136, 135
Decimal	12093575
CIELab	61.26, 18.20, 7.74
CIELCh	61, 19.774, 23.041
Yxy	29.5479, 0.3686, 0.3306
Android (android.graphics.Color)	4290283655 (0xFFB88887)
YUV	150.2380, -7.5123, 29.6093
Hunter-Lab	54.3580, 13.0553, 8.7268

Details

The Yxy color **29.5479, 0.3686, 0.3306** is a light color, and the websafe version is hex **CC9999**. A complement of this color would be **42.4726, 0.2742, 0.3274**, and the grayscale version is **30.6294, 0.3127, 0.3290**.

A 20% lighter version of the original color is **59.1585, 0.3571, 0.3313**, and **12.0573, 0.3893, 0.3312** is the 20% darker color. If you saturate the color by 10%, you get **24.4188, 0.3993, 0.3313**, and if you desaturate by 10%, it is **35.6226, 0.3437, 0.3300**.

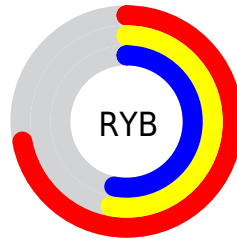
Distribution



Red (72%)

Green (53%)

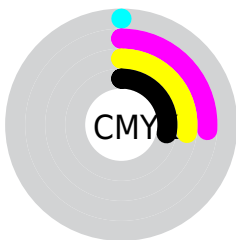
Blue (53%)



Red (72%)

Yellow (53%)

Blue (53%)

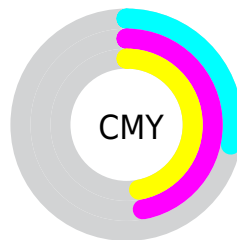


Cyan (0%)

Magenta (26%)

Yellow (27%)

Black (28%)



Cyan (28%)

Magenta (47%)

Yellow (47%)

Brightness & Saturation Gradients

These gradients show how the Yxy color 29.5479, 0.3686, 0.3306 changes by changing the brightness by 10 percent. The first figure shows a shift by +10% for each color and the second figure -10%.


Similar to the brightness gradients but the following saturation gradients show a change of the Yxy color 29.5479, 0.3686, 0.3306 by changing the saturation by 10% instead.


 29.5479, 0.3686,
0.3306


 29.5479, 0.3686,
0.3306


299.7914, 0.3383,
0.3303


 19.4957, 0.3770,
0.3305


 58.9465, 0.3570,
0.3306

 12.0290, 0.3885,
0.3302


 79.0616, 0.3528,
0.3306

 6.7634, 0.4047,
0.3294


 103.2999, 0.3493,
0.3305

 3.3146, 0.4297,
0.3276

132.0456, 0.3464,
0.3305

 1.2981, 0.4733,
0.3233

165.6832, 0.3439,
0.3304

 0.1397, 0.8051,
0.1949

204.5971, 0.3418,

 0.0000, 0.0000,

0.3304

0.0000

249.1717, 0.3399,
0.3303

■ 29.5479, 0.3686,
0.3306

■ 29.5479, 0.3686,
0.3306

■ 24.4188, 0.3993,
0.3313

■ 35.6226, 0.3437,
0.3300

■ 20.1840, 0.4363,
0.3319

■ 42.6826, 0.3238,
0.3294

■ 16.7933, 0.4794,
0.3324

■ 50.7706, 0.3077,
0.3288

■ 14.1904, 0.5262,
0.3326

■ 59.9253, 0.2948,
0.3283

■ 12.3118, 0.5718,
0.3325

■ 70.1837, 0.2843,
0.3279

■ 11.0843, 0.6093,
0.3319

■ 81.5806, 0.2758,
0.3275

■ 10.4185, 0.6327,
0.3311

■ 88.9306, 0.2721,
0.3289

■ 10.2734, 0.6386,
0.3312

Harmonies

Analogous

The Analogous color harmony consists of three colors that are next to each other on the color wheel.



29.5479, 0.3444, 0.3051



29.5479, 0.3686, 0.3306



29.5479, 0.3769, 0.3570

Triad

The Triadic color harmony groups three colors that are evenly spaced from another and form a triangle on the color wheel.



29.5479, 0.3686, 0.3306



29.5479, 0.3107, 0.3782



29.5479, 0.2602, 0.2797

Complementary

The Complementary color scheme is a pair of colors which are on the opposite of each other on the color wheel.



29.5479, 0.3686, 0.3306



42.4726, 0.2742, 0.3274

Split Complementary

Split-complementary colors differ from the complementary color scheme. The scheme consists of three colors, the original color and two neighbors of the complement color.



29.5479, 0.2524, 0.2962



29.5479, 0.3686, 0.3306



29.5479, 0.2806, 0.3542

Square

The Square scheme is like the rectangle color scheme, but the four colors are evenly spaced on the color wheel.



29.5479, 0.3686, 0.3306



29.5479, 0.3424, 0.3866



29.5479, 0.2596, 0.3233



29.5479, 0.2815, 0.2765

Rectangle

The Rectangle color scheme consists of four colors that form a rectangle on the color wheel.



29.5479, 0.3686, 0.3306



29.5479, 0.3722, 0.3720



29.5479, 0.2596, 0.3233



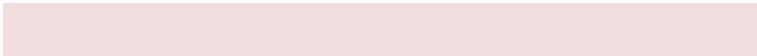
29.5479, 0.2560, 0.2838

Sweetspot

The Sweet Spot groups the original color and five complimentary colors.



29.5493, 0.3686, 0.3306



75.3392, 0.3265, 0.3295



30.9423, 0.3166, 0.2648



15.8112, 0.3293, 0.3295



93.3107, 0.3127, 0.3290



18.7317, 0.3127, 0.3290

Same Dimension

The Same Dimension uses a secret algorithm to generate beautiful new colors.



29.5493, 0.3686, 0.3306



47.8776, 0.3859, 0.3310



37.1899, 0.3600, 0.3642



9.0412, 0.3287, 0.3295



7.0930, 0.6382, 0.3314



0.2602, 0.6308, 0.3373

Inverse Universe

The Inverse Universe completely reimagines the original color for something new.



42.4726, 0.2742, 0.3274



75.2736, 0.2667, 0.3270



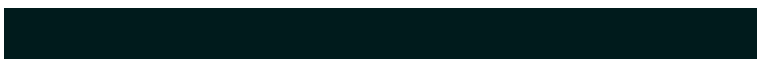
33.2969, 0.2708, 0.2910



10.1778, 0.2985, 0.3285



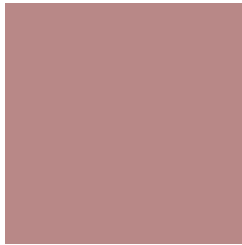
24.9484, 0.2229, 0.3225



0.8896, 0.2234, 0.3242

Previews

White Background



This preview shows how the Yxy color 29.5479, 0.3686, 0.3306 looks on a white background.

Color Contrast Check

Large Text (above 18pt) WCAG AA ✓ Pass

Any Text WCAG AA ✗ Fail

Large Text (above 18pt) WCAG AAA ✗ Fail

Any Text WCAG AAA ✗ Fail

Black Background



This preview shows how the Yxy color 29.5479, 0.3686, 0.3306 looks on a black background.

Color Contrast Check

Large Text (above 18pt) WCAG AA ✓ Pass

Any Text WCAG AA ✓ Pass

Large Text (above 18pt) WCAG AAA ✓ Pass

Any Text WCAG AAA × Fail

If you want to check with other color combinations, try the [Color Contrast Checker](#).

Yxy 29.5479, 0.3686, 0.3306

Background



This preview shows how black text looks on a background with the Yxy color 29.5479, 0.3686, 0.3306.



This preview shows how white text looks on a background with the Yxy color 29.5479, 0.3686, 0.3306.

Color Blindness Simulation

Color vision deficiency is a very complex topic, and I could not describe the different causes any better than Wikipedia does, so if you want to learn more, you should check out their [article about color blindness](#).

Dichromacy



Original Color

29.5479, 0.3686, 0.3306

Protanopia

29.7783, 0.3237, 0.3400

Deuteranopia

29.6910, 0.3494, 0.3426



Tritanopia

29.4088, 0.3589, 0.3137

Trichromacy



Original Color

29.5479, 0.3686, 0.3306

Protanomaly

29.7031, 0.3394, 0.3367

Deuteranomaly

29.4761, 0.3570, 0.3380

Tritanomaly

29.5653, 0.3632, 0.3207

Monochromacy



Original Color

29.5479, 0.3686, 0.3306

Achromatopsia

30.4987, 0.3127, 0.3290

Achromatomaly

29.9765, 0.3308, 0.3291

CSS Examples

Text

The CSS property to change the color of the text to Yxy 29.5479, 0.3686, 0.3306 is called "color". The color property can be set on classes, ids or directly on the HTML element.

This example shows how text in the color `rgb(184, 136, 135)` looks like.

```
.text, #text, p{  
    color:rgb(184, 136, 135)  
}
```

If you want to add a text shadow in that color use the text-shadow property, you can generate a text shadow directly with our [CSS Text Shadow Generator](#).

Here you see how black text with a 4 pixel rgb(184, 136, 135) colored shadow looks like.

```
.shadow{ text-shadow: 4px 4px 2px rgb(184, 136, 135) }
```

Border

The CSS property to change the border of an element to Yxy 29.5479, 0.3686, 0.3306 is called "border". The border property can be set on classes, ids or directly on the HTML element.

This example shows the color as border, it can be applied via the CSS property "border" or "border-color".

```
.border, #border, table{ border:4px solid rgb(184, 136, 135) }
```

If only the border color should be changed use the property `border-color`.

```
.border{ border-color:rgb(184, 136, 135) }
```

If you want to add a box shadow in that color use:

Here you see how a box with a 4 pixel `rgb(184, 136, 135)` colored shadow looks like.

```
.boxshadow{ -moz-box-shadow:4px 4px 4px  
4px rgb(184, 136, 135); -webkit-box-  
shadow:4px 4px 4px 4px rgb(184, 136, 135);  
box-shadow:4px 4px 4px 4px rgb(184, 136,  
135) }
```


Background

The CSS property to change the background color of an element to Yxy 29.5479, 0.3686, 0.3306 is called "background". The background property can be set on classes, ids or directly on the HTML element.

```
.background, #background, body{  
background: rgb(184, 136, 135) }
```

If only the background color should be changed can be used:

```
.background{ background-color: rgb(184,  
136, 135) }
```

This example shows the color as background, it is applied via the CSS property "background".

To optimize and compress your CSS code, you can use our [online CSS compressor and optimizer](#) based on csstidy. If you want to create a linear or radial gradient as background or border, check our [CSS Gradient Generator](#).

Hey! You found this booklet interesting? Support Converting Colors with the new Membership Option!

The pro membership hides all ads, plus gives you double the colors in the color bucket, and more awesome pro features!

[Learn more, Memberships starting at \\$2.50/m!](#)

**Follow me
on Twitter!**

@ConvertingColor