

Converting Colors

$Y_{xy}(29.7390, 0.3580, 0.3347)$

Have a look what the booklet for
Yxy(29.7390, 0.3580, 0.3347)
contains.

Yxy(29.8809, 0.3582, 0.3349)	3
Conversions	4
Details	6
Harmonies	12
Previews	24
Color Blindness Simulation	27
CSS Examples	30

Color

Yxy(29.8809, 0.3582, 0.3349)

Conversions

Conversions Part 1

Format	Color
Hex	B18C88
RGB	177, 140, 136
RGB Percent	69%, 55%, 53%
CMY	0.3058, 0.4510, 0.4666
CMYK	0.00, 0.21, 0.23, 0.31
HSL	6°, 21%, 61%
HSV	6°, 23%, 69%
XYZ	31.9598, 29.8809, 27.3826
YIQ	150.6070, 23.3360, 6.6000

Conversions

Conversions Part 2

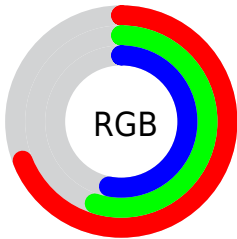
Format	Color
RYB	177, 140, 136
Decimal	11635848
CIELab	61.55, 13.42, 7.47
CIElCh	62, 15.355, 29.100
Yxy	29.8809, 0.3582, 0.3349
Android (android.graphics.Color)	4289825928 (0xFFB18C88)
YUV	150.6070, -7.2013, 23.1467
Hunter-Lab	54.6634, 8.7018, 8.5642

Details

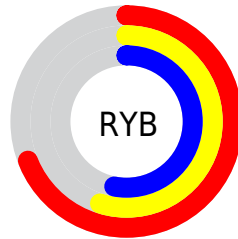
The Yxy color **29.8809, 0.3582, 0.3349** is a light color, and the websafe version is hex **CC9999**. A complement of this color would be **38.3219, 0.2786, 0.3230**, and the grayscale version is **30.7967, 0.3127, 0.3290**.

A 20% lighter version of the original color is **59.5813, 0.3487, 0.3347**, and **12.2693, 0.3753, 0.3373** is the 20% darker color. If you saturate the color by 10%, you get **25.0819, 0.3855, 0.3376**, and if you desaturate by 10%, it is **35.4447, 0.3359, 0.3322**.

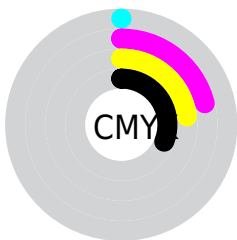
Distribution



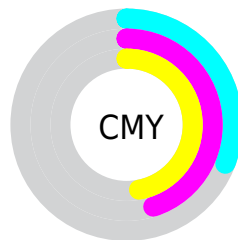
- Red (69%)
- Green (55%)
- Blue (53%)



- Red (69%)
- Yellow (55%)
- Blue (53%)



- Cyan (0%)
- Magenta (21%)
- Yellow (23%)
- Black (31%)





- Cyan (31%)
- Magenta (45%)
- Yellow (47%)

Brightness & Saturation Gradients


These gradients show how the Yxy color 29.8809, 0.3582, 0.3349 changes by changing the brightness by 10 percent. The first figure shows a shift by +10% for each color and the second figure -10%.


Similar to the brightness gradients but the following saturation gradients show a change of the Yxy color 29.8809, 0.3582, 0.3349 by changing the saturation by 10% instead.


 29.8809, 0.3582,
0.3349


 29.8809, 0.3582,
0.3349


301.3489, 0.3336,
0.3321

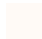
 19.7482, 0.3650,
0.3355


 59.4738, 0.3488,
0.3339

 12.2121, 0.3743,
0.3362


 79.7028, 0.3454,
0.3336

 6.8883, 0.3874,
0.3370


 104.0659, 0.3426,
0.3332

 3.3924, 0.4076,
0.3377

132.9477, 0.3402,
0.3330

 1.3398, 0.4427,
0.3378

166.7325, 0.3382,
0.3327

 0.1717, 0.7408,
0.2592

205.8047, 0.3364,

 0.0000, 0.0000,

0.3325

0.0000

250.5487, 0.3349,
0.3323

■ 29.8809, 0.3582,
0.3349

■ 29.8809, 0.3582,
0.3349

■ 25.0819, 0.3855,
0.3376

■ 35.4447, 0.3359,
0.3322

■ 21.0105, 0.4183,
0.3403

■ 41.8005, 0.3177,
0.3298

■ 17.6322, 0.4569,
0.3425

■ 48.9790, 0.3029,
0.3275

■ 14.9084, 0.5001,
0.3438

■ 57.0082, 0.2909,
0.3254

■ 12.7965, 0.5449,
0.3438

■ 65.9147, 0.2809,
0.3235

■ 11.2490, 0.5859,
0.3420

■ 75.7239, 0.2727,
0.3218

■ 10.2112, 0.6172,
0.3384

■ 86.1380, 0.2682,
0.3255

■ 9.7560, 0.6322,
0.3363

■ 88.0908, 0.2686,
0.3289

Harmonies

Analogous

The Analogous color harmony consists of three colors that are next to each other on the color wheel.



29.8809, 0.3418, 0.3142



29.8809, 0.3582, 0.3349



29.8809, 0.3619, 0.3550

Triad

The Triadic color harmony groups three colors that are evenly spaced from another and form a triangle on the color wheel.



29.8809, 0.3582, 0.3349



29.8809, 0.3064, 0.3637



29.8809, 0.2743, 0.2893

Complementary

The Complementary color scheme is a pair of colors which are on the opposite of each other on the color wheel.



29.8809, 0.3582, 0.3349



38.3219, 0.2786, 0.3230

Split Complementary

Split-complementary colors differ from the complementary color scheme. The scheme consists of three colors, the original color and two neighbors of the complement color.



29.8809, 0.2658, 0.3005



29.8809, 0.3582, 0.3349



29.8809, 0.2838, 0.3438

Square

The Square scheme is like the rectangle color scheme, but the four colors are evenly spaced on the color wheel.



29.8809, 0.3582, 0.3349



29.8809, 0.3313, 0.3730



29.8809, 0.2692, 0.3203



29.8809, 0.2930, 0.2885

Rectangle

The Rectangle color scheme consists of four colors that form a rectangle on the color wheel.



29.8809, 0.3582, 0.3349



29.8809, 0.3565, 0.3655



29.8809, 0.2692, 0.3203



29.8809, 0.2702, 0.2919

Sweetspot

The Sweet Spot groups the original color and five complimentary colors.



29.8823, 0.3582, 0.3349



70.1626, 0.3245, 0.3307



30.0056, 0.3188, 0.2769



15.0625, 0.3255, 0.3309



89.0005, 0.3127, 0.3290



17.0645, 0.3127, 0.3290

Same Dimension

The Same Dimension uses a secret algorithm to generate beautiful new colors.



29.8823, 0.3582, 0.3349



48.7662, 0.3720, 0.3364



36.2508, 0.3520, 0.3631



8.6332, 0.3285, 0.3313



7.1087, 0.6310, 0.3372



0.2667, 0.5988, 0.3628

Inverse Universe

The Inverse Universe completely reimagines the original color for something new.



38.3219, 0.2786, 0.3230



66.6346, 0.2713, 0.3215



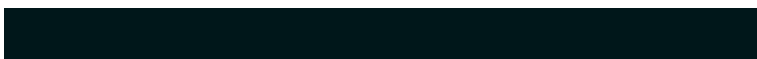
31.2293, 0.2762, 0.2924



9.4881, 0.2986, 0.3267



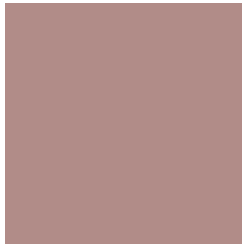
20.5306, 0.2163, 0.2988



0.6864, 0.2189, 0.3079

Previews

White Background



This preview shows how the Yxy color 29.8809, 0.3582, 0.3349 looks on a white background.

Color Contrast Check

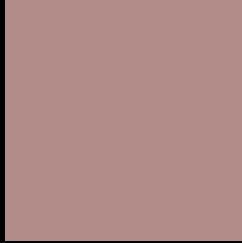
Large Text (above 18pt) WCAG AA ✓ Pass

Any Text WCAG AA ✗ Fail

Large Text (above 18pt) WCAG AAA ✗ Fail

Any Text WCAG AAA ✗ Fail

Black Background



This preview shows how the Yxy color 29.8809, 0.3582, 0.3349 looks on a black background.

Color Contrast Check

Large Text (above 18pt) WCAG AA ✓ Pass

Any Text WCAG AA ✓ Pass

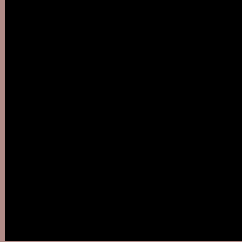
Large Text (above 18pt) WCAG AAA ✓ Pass

Any Text WCAG AAA × Fail

If you want to check with other color combinations, try the [Color Contrast Checker](#).

Yxy 29.8809, 0.3582, 0.3349

Background



This preview shows how black text looks on a background with the Yxy color 29.8809, 0.3582, 0.3349.



This preview shows how white text looks on a background with the Yxy color 29.8809, 0.3582, 0.3349.

Color Blindness Simulation

Color vision deficiency is a very complex topic, and I could not describe the different causes any better than Wikipedia does, so if you want to learn more, you should check out their [article about color blindness](#).

Dichromacy



Original Color

29.8809, 0.3582, 0.3349

Protanopia

29.8456, 0.3257, 0.3416

Deuteranopia

30.0206, 0.3480, 0.3426



Tritanopia

29.9306, 0.3466, 0.3134

Trichromacy



Original Color

29.8809, 0.3582, 0.3349

Protanomaly

29.7963, 0.3370, 0.3382

Deuteranomaly

30.0521, 0.3516, 0.3410

Tritanomaly

29.9438, 0.3508, 0.3219

Monochromacy



Original Color

29.8809, 0.3582, 0.3349

Achromatopsia

30.9469, 0.3127, 0.3290

Achromatomaly

30.4163, 0.3273, 0.3306

CSS Examples

Text

The CSS property to change the color of the text to Yxy 29.8809, 0.3582, 0.3349 is called "color". The color property can be set on classes, ids or directly on the HTML element.

This example shows how text in the color `rgb(177, 140, 136)` looks like.

```
.text, #text, p{  
    color:rgb(177, 140, 136)  
}
```

If you want to add a text shadow in that color use the text-shadow property, you can generate a text shadow directly with our [CSS Text Shadow Generator](#).

Here you see how black text with a 4 pixel rgb(177, 140, 136) colored shadow looks like.

```
.shadow{ text-shadow: 4px 4px 2px rgb(177, 140, 136) }
```

Border

The CSS property to change the border of an element to Yxy 29.8809, 0.3582, 0.3349 is called "border". The border property can be set on classes, ids or directly on the HTML element.

This example shows the color as border, it can be applied via the CSS property "border" or "border-color".

```
.border, #border, table{ border:4px solid rgb(177, 140, 136) }
```

If only the border color should be changed use the property `border-color`.

```
.border{ border-color:rgb(177, 140, 136) }
```

If you want to add a box shadow in that color use:

Here you see how a box with a 4 pixel `rgb(177, 140, 136)` colored shadow looks like.

```
.boxshadow{ -moz-box-shadow:4px 4px 4px 4px rgb(177, 140, 136); -webkit-box-shadow:4px 4px 4px 4px rgb(177, 140, 136); box-shadow:4px 4px 4px 4px rgb(177, 140, 136) }
```


Background

The CSS property to change the background color of an element to Yxy 29.8809, 0.3582, 0.3349 is called "background". The background property can be set on classes, ids or directly on the HTML element.

```
.background, #background, body{  
background: rgb(177, 140, 136) }
```

If only the background color should be changed can be used:

```
.background{ background-color: rgb(177,  
140, 136) }
```

This example shows the color as background, it is applied via the CSS property "background".

To optimize and compress your CSS code, you can use our [online CSS compressor and optimizer](#) based on csstidy. If you want to create a linear or radial gradient as background or border, check our [CSS Gradient Generator](#).

Hey! You found this booklet interesting? Support Converting Colors with the new Membership Option!

The pro membership hides all ads, plus gives you double the colors in the color bucket, and more awesome pro features!

[Learn more, Memberships starting at \\$2.50/m!](#)

**Follow me
on Twitter!**

@ConvertingColor