

Converting Colors

$Yxy(30.2768, 0.3647, 0.3298)$

Have a look what the booklet for
Yxy(30.2768, 0.3647, 0.3298)
contains.

Yxy(30.2023, 0.3645, 0.3292)	3
Conversions	4
Details	6
Harmonies	12
Previews	24
Color Blindness Simulation	27
CSS Examples	30

Color

Yxy(30.2023, 0.3645, 0.3292)

Conversions

Conversions Part 1

Format	Color
Hex	B88A8A
RGB	184, 138, 138
RGB Percent	72%, 54%, 54%
CMY	0.2784, 0.4588, 0.4589
CMYK	0.00, 0.25, 0.25, 0.28
HSL	0°, 24%, 63%
HSV	0°, 25%, 72%
XYZ	33.4409, 30.2023, 28.1014
YIQ	151.7540, 27.4160, 9.7520

Conversions

Conversions Part 2

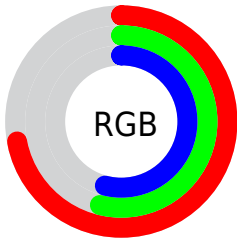
Format	Color
RYB	184, 138, 138
Decimal	12094090
CIELab	61.83, 17.51, 6.85
CIElCh	62, 18.805, 21.364
Yxy	30.2023, 0.3645, 0.3292
Android (android.graphics.Color)	4290284170 (0xFFB88A8A)
YUV	151.7540, -6.7807, 28.2797
Hunter-Lab	54.9566, 12.4424, 8.1525

Details

The Yxy color **30.2023, 0.3645, 0.3292** is a light color, and the websafe version is hex **CC9999**. A complement of this color would be **43.1264, 0.2765, 0.3288**, and the grayscale version is **31.3088, 0.3127, 0.3290**.

A 20% lighter version of the original color is **60.1616, 0.3542, 0.3302**, and **12.4299, 0.3829, 0.3292** is the 20% darker color. If you saturate the color by 10%, you get **24.8783, 0.3945, 0.3293**, and if you desaturate by 10%, it is **36.5124, 0.3403, 0.3291**.

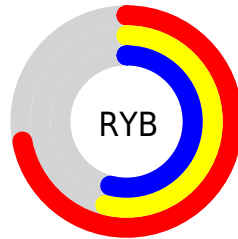
Distribution



Red (72%)

Green (54%)

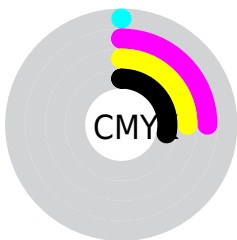
Blue (54%)



Red (72%)

Yellow (54%)

Blue (54%)

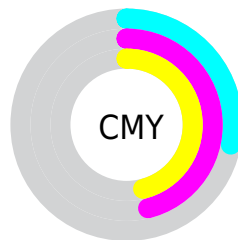


Cyan (0%)

Magenta (25%)

Yellow (25%)

Black (28%)



Cyan (28%)


Magenta (46%)


Yellow (46%)

Brightness & Saturation Gradients


These gradients show how the Yxy color 30.2023, 0.3645, 0.3292 changes by changing the brightness by 10 percent. The first figure shows a shift by +10% for each color and the second figure -10%.


Similar to the brightness gradients but the following saturation gradients show a change of the Yxy color 30.2023, 0.3645, 0.3292 by changing the saturation by 10% instead.


 30.2023, 0.3645,
0.3292


 30.2023, 0.3645,
0.3292


302.8463, 0.3365,
0.3295


 19.9922, 0.3722,
0.3289


 59.9820, 0.3538,
0.3295

 12.3894, 0.3827,
0.3284


 80.3203, 0.3499,
0.3295

 7.0094, 0.3976,
0.3275


 104.8035, 0.3467,
0.3295

 3.4680, 0.4203,
0.3256

133.8160, 0.3441,
0.3296

 1.3807, 0.4590,
0.3209

167.7421, 0.3418,
0.3296

 0.2024, 0.7538,
0.2462

206.9662, 0.3398,

 0.0000, 0.0000,

0.3296

0.0000

251.8728, 0.3380,
0.3296

■ 30.2023, 0.3645,
0.3292

■ 30.2023, 0.3645,
0.3292

■ 24.8783, 0.3945,
0.3293

■ 36.5124, 0.3403,
0.3291

■ 20.4866, 0.4310,
0.3294

■ 43.8505, 0.3209,
0.3290

■ 16.9750, 0.4738,
0.3296

■ 52.2610, 0.3054,
0.3290

■ 14.2841, 0.5208,
0.3297

■ 61.7845, 0.2929,
0.3289

■ 12.3474, 0.5674,
0.3299

■ 72.4597, 0.2829,
0.3289

■ 11.0880, 0.6064,
0.3299

■ 84.3231, 0.2747,
0.3288

■ 10.4122, 0.6312,
0.3300

■ 88.9300, 0.2721,
0.3289

■ 10.1931, 0.6400,
0.3300

Harmonies

Analogous

The Analogous color harmony consists of three colors that are next to each other on the color wheel.



30.2023, 0.3410, 0.3052



30.2023, 0.3645, 0.3292



30.2023, 0.3733, 0.3543

Triad

The Triadic color harmony groups three colors that are evenly spaced from another and form a triangle on the color wheel.



30.2023, 0.3645, 0.3292



30.2023, 0.3126, 0.3762



30.2023, 0.2622, 0.2830

Complementary

The Complementary color scheme is a pair of colors which are on the opposite of each other on the color wheel.



30.2023, 0.3645, 0.3292



43.1264, 0.2765, 0.3288

Split Complementary

Split-complementary colors differ from the complementary color scheme. The scheme consists of three colors, the original color and two neighbors of the complement color.



30.2023, 0.2556, 0.2993



30.2023, 0.3645, 0.3292



30.2023, 0.2838, 0.3543

Square

The Square scheme is like the rectangle color scheme, but the four colors are evenly spaced on the color wheel.



30.2023, 0.3645, 0.3292



30.2023, 0.3424, 0.3833



30.2023, 0.2633, 0.3254



30.2023, 0.2819, 0.2791

Rectangle

The Rectangle color scheme consists of four colors that form a rectangle on the color wheel.



30.2023, 0.3645, 0.3292



30.2023, 0.3696, 0.3687



30.2023, 0.2633, 0.3254



30.2023, 0.2585, 0.2871

Sweetspot

The Sweet Spot groups the original color and five complimentary colors.



30.2037, 0.3645, 0.3292



75.1376, 0.3265, 0.3291



31.8198, 0.3156, 0.2678



15.7608, 0.3293, 0.3291



93.3107, 0.3127, 0.3290



18.7317, 0.3127, 0.3290

Same Dimension

The Same Dimension uses a secret algorithm to generate beautiful new colors.



30.2037, 0.3645, 0.3292



49.2404, 0.3802, 0.3293



37.5087, 0.3569, 0.3609



9.0133, 0.3288, 0.3291



7.0257, 0.6400, 0.3300



0.2481, 0.6397, 0.3303

Inverse Universe

The Inverse Universe completely reimagines the original color for something new.



43.1264, 0.2765, 0.3288



76.6862, 0.2695, 0.3288



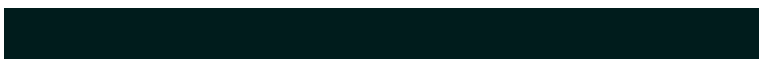
34.3461, 0.2735, 0.2948



10.2094, 0.2985, 0.3289



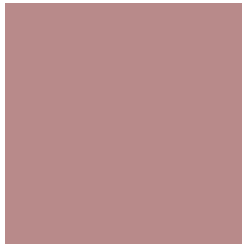
25.9710, 0.2246, 0.3285



0.9159, 0.2246, 0.3286

Previews

White Background



This preview shows how the Yxy color 30.2023, 0.3645, 0.3292 looks on a white background.

Color Contrast Check

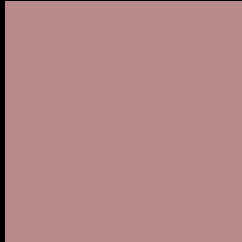
Large Text (above 18pt) WCAG AA × Fail

Any Text WCAG AA × Fail

Large Text (above 18pt) WCAG AAA × Fail

Any Text WCAG AAA × Fail

Black Background



This preview shows how the Yxy color 30.2023, 0.3645, 0.3292 looks on a black background.

Color Contrast Check

Large Text (above 18pt) WCAG AA ✓ Pass

Any Text WCAG AA ✓ Pass

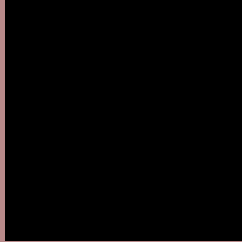
Large Text (above 18pt) WCAG AAA ✓ Pass

Any Text WCAG AAA ✓ Pass

If you want to check with other color combinations, try the [Color Contrast Checker](#).

Yxy 30.2023, 0.3645, 0.3292

Background



This preview shows how black text looks on a background with the Yxy color 30.2023, 0.3645, 0.3292.



This preview shows how white text looks on a background with the Yxy color 30.2023, 0.3645, 0.3292.

Color Blindness Simulation

Color vision deficiency is a very complex topic, and I could not describe the different causes any better than Wikipedia does, so if you want to learn more, you should check out their [article about color blindness](#).

Dichromacy



Original Color

30.2023, 0.3645, 0.3292

Protanopia

30.3785, 0.3227, 0.3368

Deuteranopia

30.1877, 0.3470, 0.3395



Tritanopia

30.3122, 0.3558, 0.3152

Trichromacy



Original Color

30.2023, 0.3645, 0.3292

Protanomaly

30.2031, 0.3371, 0.3336

Deuteranomaly

30.1508, 0.3531, 0.3365

Tritanomaly

30.2192, 0.3591, 0.3193

Monochromacy



Original Color

30.2023, 0.3645, 0.3292

Achromatopsia

31.3989, 0.3127, 0.3290

Achromatomaly

30.8665, 0.3306, 0.3291

CSS Examples

Text

The CSS property to change the color of the text to Yxy 30.2023, 0.3645, 0.3292 is called "color". The color property can be set on classes, ids or directly on the HTML element.

This example shows how text in the color `rgb(184, 138, 138)` looks like.

```
.text, #text, p{  
    color:rgb(184, 138, 138)  
}
```

If you want to add a text shadow in that color use the text-shadow property, you can generate a text shadow directly with our [CSS Text Shadow Generator](#).

Here you see how black text with a 4 pixel rgb(184, 138, 138) colored shadow looks like.

```
.shadow{ text-shadow: 4px 4px 2px rgb(184, 138, 138) }
```

Border

The CSS property to change the border of an element to Yxy 30.2023, 0.3645, 0.3292 is called "border". The border property can be set on classes, ids or directly on the HTML element.

This example shows the color as border, it can be applied via the CSS property "border" or "border-color".

```
.border, #border, table{ border:4px solid rgb(184, 138, 138) }
```

If only the border color should be changed use the property `border-color`.

```
.border{ border-color:rgb(184, 138, 138) }
```

If you want to add a box shadow in that color use:

Here you see how a box with a 4 pixel `rgb(184, 138, 138)` colored shadow looks like.

```
.boxshadow{ -moz-box-shadow:4px 4px 4px  
4px rgb(184, 138, 138); -webkit-box-  
shadow:4px 4px 4px 4px rgb(184, 138, 138);  
box-shadow:4px 4px 4px 4px rgb(184, 138,  
138) }
```


Background

The CSS property to change the background color of an element to Yxy 30.2023, 0.3645, 0.3292 is called "background". The background property can be set on classes, ids or directly on the HTML element.

```
.background, #background, body{  
background: rgb(184, 138, 138) }
```

If only the background color should be changed can be used:

```
.background{ background-color: rgb(184,  
138, 138) }
```

This example shows the color as background, it is applied via the CSS property "background".

To optimize and compress your CSS code, you can use our [online CSS compressor and optimizer](#) based on csstidy. If you want to create a linear or radial gradient as background or border, check our [CSS Gradient Generator](#).

Hey! You found this booklet interesting? Support Converting Colors with the new Membership Option!

The pro membership hides all ads, plus gives you double the colors in the color bucket, and more awesome pro features!

[Learn more, Memberships starting at \\$2.50/m!](#)

**Follow me
on Twitter!**

@ConvertingColor