

Converting Colors

$Y_{xy}(30.2862, 0.3201, 0.3279)$

Have a look what the booklet for
Yxy(30.2862, 0.3201, 0.3279)
contains.

Yxy(30.4177, 0.3200, 0.3275)	3
Conversions	4
Details	6
Harmonies	12
Previews	24
Color Blindness Simulation	27
CSS Examples	30

Color

Yxy(30.4177, 0.3200, 0.3275)

Conversions

Conversions Part 1

Format	Color
Hex	9C9495
RGB	156, 148, 149
RGB Percent	61%, 58%, 58%
CMY	0.3883, 0.4196, 0.4157
CMYK	0.00, 0.05, 0.04, 0.39
HSL	353°, 4%, 60%
HSV	353°, 5%, 61%
XYZ	29.7211, 30.4177, 32.7397
YIQ	150.5060, 4.4470, 2.0070

Conversions

Conversions Part 2

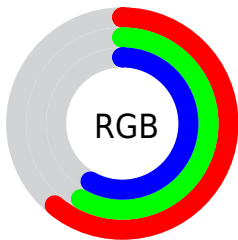
Format	Color
R _Y B	156, 148, 149
Decimal	10261653
CIE Lab	62.01, 3.11, 0.52
CIE LCh	62, 3.154, 9.424
Yxy	30.4177, 0.3200, 0.3275
Android (android.graphics.Color)	4288451733 (0xFF9C9495)
YUV	150.5060, -0.7425, 4.8182
Hunter-Lab	55.1522, -0.3242, 3.4106

Details

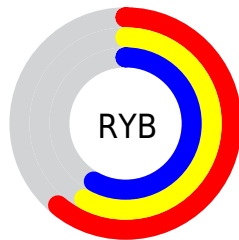
The Yxy color $30.4177, 0.3200, 0.3275$ is a light color, and the websafe version is hex 999999 . A complement of this color would be $32.4307, 0.3059, 0.3305$, and the grayscale version is $30.7267, 0.3127, 0.3290$.

A 20% lighter version of the original color is $60.2545, 0.3182, 0.3279$, and $12.4345, 0.3234, 0.3268$ is the 20% darker color. If you saturate the color by 10%, you get $25.4397, 0.3368, 0.3244$, and if you desaturate by 10%, it is $36.1088, 0.3064, 0.3304$.

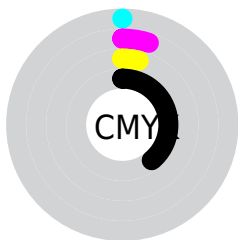
Distribution



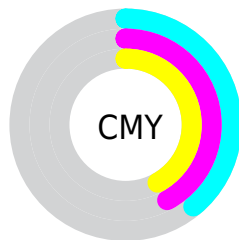
- Red (61%)
- Green (58%)
- Blue (58%)



- Red (61%)
- Yellow (58%)
- Blue (58%)



- Cyan (0%)
- Magenta (5%)
- Yellow (4%)
- Black (39%)



- Cyan (39%)
- Magenta (42%)
- Yellow (42%)

Brightness & Saturation Gradients

These gradients show how the Yxy color 30.4177, 0.3200, 0.3275 changes by changing the brightness by 10 percent. The first figure shows a shift by +10% for each color and the second figure -10%.

Similar to the brightness gradients but the following saturation gradients show a change of the Yxy color 30.4177, 0.3200, 0.3275 by changing the saturation by 10% instead.

■ 30.4177, 0.3200,
0.3275

■ 30.4177, 0.3200,
0.3275

303.8466, 0.3161,
0.3283

■ 20.1559, 0.3211,
0.3273

■ 60.3221, 0.3185,
0.3278

■ 12.5084, 0.3225,
0.3270

■ 80.7335, 0.3180,
0.3279

■ 7.0909, 0.3246,
0.3265

105.2968, 0.3175,
0.3280

■ 3.5190, 0.3277,
0.3258

134.3965, 0.3172,
0.3281

■ 1.4083, 0.3331,
0.3247

168.4169, 0.3168,
0.3282

■ 0.2228, 0.4013,
0.3107

207.7425, 0.3166,

■ 0.0000, 0.0000,

0.3282

0.0000

252.7576, 0.3163,
0.3283

■ 30.4177, 0.3200,
0.3275

■ 30.4177, 0.3200,
0.3275

■ 25.4397, 0.3368,
0.3244

■ 36.1088, 0.3064,
0.3304

■ 21.1430, 0.3575,
0.3211

■ 42.5355, 0.2954,
0.3330

■ 17.4990, 0.3831,
0.3179

■ 49.7242, 0.2865,
0.3354

■ 14.4759, 0.4140,
0.3148

■ 57.6986, 0.2791,
0.3376

■ 12.0388, 0.4506,
0.3123

■ 66.4816, 0.2731,
0.3395

■ 10.1498, 0.4920,
0.3109

■ 76.0951, 0.2680,
0.3413

■ 8.7661, 0.5354,
0.3113

■ 85.1527, 0.2635,
0.3405

■ 7.8389, 0.5764,
0.3139

■ 85.8052, 0.2587,
0.3288

■ 7.3060, 0.6093,
0.3185

Harmonies

Analogous

The Analogous color harmony consists of three colors that are next to each other on the color wheel.



30.4177, 0.3156, 0.3234



30.4177, 0.3200, 0.3275



30.4177, 0.3225, 0.3320

Triad

The Triadic color harmony groups three colors that are evenly spaced from another and form a triangle on the color wheel.



30.4177, 0.3200, 0.3275



30.4177, 0.3149, 0.3373



30.4177, 0.3033, 0.3222

Complementary

The Complementary color scheme is a pair of colors which are on the opposite of each other on the color wheel.



30.4177, 0.3200, 0.3275



32.4307, 0.3059, 0.3305

Split Complementary

Split-complementary colors differ from the complementary color scheme. The scheme consists of three colors, the original color and two neighbors of the complement color.



30.4177, 0.3031, 0.3259



30.4177, 0.3200, 0.3275



30.4177, 0.3098, 0.3347

Square

The Square scheme is like the rectangle color scheme, but the four colors are evenly spaced on the color wheel.



30.4177, 0.3200, 0.3275



30.4177, 0.3195, 0.3377



30.4177, 0.3055, 0.3305



30.4177, 0.3059, 0.3204

Rectangle

The Rectangle color scheme consists of four colors that form a rectangle on the color wheel.



30.4177, 0.3200, 0.3275



30.4177, 0.3226, 0.3346



30.4177, 0.3055, 0.3305



30.4177, 0.3029, 0.3233

Sweetspot

The Sweet Spot groups the original color and five complimentary colors.



30.4190, 0.3200, 0.3275



58.2990, 0.3155, 0.3284



30.5429, 0.3122, 0.3169



12.8557, 0.3154, 0.3284



78.7412, 0.3127, 0.3290



13.2868, 0.3127, 0.3290

Same Dimension

The Same Dimension uses a secret algorithm to generate beautiful new colors.



30.4190, 0.3200, 0.3275



54.2943, 0.3215, 0.3272



31.3148, 0.3206, 0.3335



6.9948, 0.3221, 0.3271



5.8648, 0.6210, 0.3194



0.1083, 0.5515, 0.2812

Inverse Universe

The Inverse Universe completely reimagines the original color for something new.



30.4190, 0.3200, 0.3275



54.2943, 0.3215, 0.3272



31.4965, 0.3051, 0.3245



6.9948, 0.3221, 0.3271



5.8648, 0.6210, 0.3194



0.1083, 0.5515, 0.2812

Previews

White Background



This preview shows how the Yxy color 30.4177, 0.3200, 0.3275 looks on a white background.

Color Contrast Check

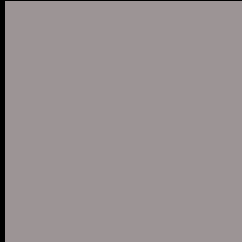
Large Text (above 18pt) WCAG AA × Fail

Any Text WCAG AA × Fail

Large Text (above 18pt) WCAG AAA × Fail

Any Text WCAG AAA × Fail

Black Background



This preview shows how the Yxy color 30.4177, 0.3200, 0.3275 looks on a black background.

Color Contrast Check

Large Text (above 18pt) WCAG AA ✓ Pass

Any Text WCAG AA ✓ Pass

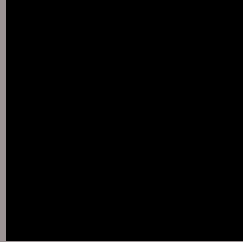
Large Text (above 18pt) WCAG AAA ✓ Pass

Any Text WCAG AAA ✓ Pass

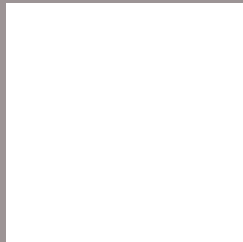
If you want to check with other color combinations, try the [Color Contrast Checker](#).

Yxy 30.4177, 0.3200, 0.3275

Background



This preview shows how black text looks on a background with the Yxy color 30.4177, 0.3200, 0.3275.

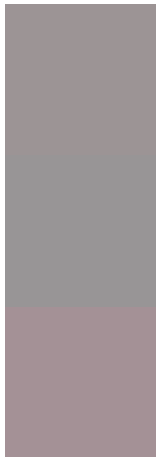


This preview shows how white text looks on a background with the Yxy color 30.4177, 0.3200, 0.3275.

Color Blindness Simulation

Color vision deficiency is a very complex topic, and I could not describe the different causes any better than Wikipedia does, so if you want to learn more, you should check out their [article about color blindness](#).

Dichromacy



Original Color

30.4177, 0.3200, 0.3275

Protanopia

30.3723, 0.3148, 0.3275

Deuteranopia

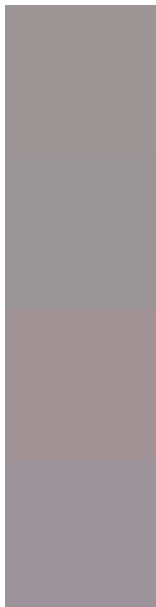
30.3453, 0.3279, 0.3216



Tritanopia

30.5042, 0.3125, 0.3124

Trichromacy



Original Color

30.4177, 0.3200, 0.3275

Protanomaly

30.4692, 0.3159, 0.3275

Deuteranomaly

30.3368, 0.3245, 0.3230

Tritanomaly

30.4021, 0.3153, 0.3169

Monochromacy



Original Color

30.4177, 0.3200, 0.3275

Achromatopsia

30.9469, 0.3127, 0.3290

Achromatomaly

30.7870, 0.3158, 0.3290

CSS Examples

Text

The CSS property to change the color of the text to Yxy 30.4177, 0.3200, 0.3275 is called "color". The color property can be set on classes, ids or directly on the HTML element.

This example shows how text in the color `rgb(156, 148, 149)` looks like.

```
.text, #text, p{  
    color:rgb(156, 148, 149)  
}
```

If you want to add a text shadow in that color use the text-shadow property, you can generate a text shadow directly with our [CSS Text Shadow Generator](#).

Here you see how black text with a 4 pixel rgb(156, 148, 149) colored shadow looks like.

```
.shadow{ text-shadow: 4px 4px 2px rgb(156, 148, 149) }
```

Border

The CSS property to change the border of an element to Yxy 30.4177, 0.3200, 0.3275 is called "border". The border property can be set on classes, ids or directly on the HTML element.

This example shows the color as border, it can be applied via the CSS property "border" or "border-color".

```
.border, #border, table{ border:4px solid rgb(156, 148, 149) }
```

If only the border color should be changed use the property `border-color`.

```
.border{ border-color:rgb(156, 148, 149) }
```

If you want to add a box shadow in that color use:

Here you see how a box with a 4 pixel `rgb(156, 148, 149)` colored shadow looks like.

```
.boxshadow{ -moz-box-shadow:4px 4px 4px  
4px rgb(156, 148, 149); -webkit-box-  
shadow:4px 4px 4px 4px rgb(156, 148, 149);  
box-shadow:4px 4px 4px 4px rgb(156, 148,  
149) }
```


Background

The CSS property to change the background color of an element to Yxy 30.4177, 0.3200, 0.3275 is called "background". The background property can be set on classes, ids or directly on the HTML element.

```
.background, #background, body{  
background: rgb(156, 148, 149) }
```

If only the background color should be changed can be used:

```
.background{ background-color: rgb(156,  
148, 149) }
```

This example shows the color as background, it is applied via the CSS property "background".

To optimize and compress your CSS code, you can use our [online CSS compressor and optimizer](#) based on csstidy. If you want to create a linear or radial gradient as background or border, check our [CSS Gradient Generator](#).

Hey! You found this booklet interesting? Support Converting Colors with the new Membership Option!

The pro membership hides all ads, plus gives you double the colors in the color bucket, and more awesome pro features!

[Learn more, Memberships starting at \\$2.50/m!](#)

**Follow me
on Twitter!**

@ConvertingColor