

Converting Colors

$Yxy(30.4846, 0.3637, 0.3247)$

Have a look what the booklet for
Yxy(30.4846, 0.3637, 0.3247)
contains.

Yxy(30.5391, 0.3633, 0.3250)	3
<i>Conversions</i>	4
<i>Details</i>	6
<i>Harmonies</i>	12
<i>Previews</i>	24
<i>Color Blindness Simulation</i>	27
<i>CSS Examples</i>	30

Color

Yxy(30.5391, 0.3633, 0.3250)

Conversions

Conversions Part 1

Format	Color
Hex	BA8A8D
RGB	186, 138, 141
RGB Percent	73%, 54%, 55%
CMY	0.2707, 0.4587, 0.4471
CMYK	0.00, 0.26, 0.24, 0.27
HSL	356°, 26%, 64%
HSV	356°, 26%, 73%
XYZ	34.1380, 30.5391, 29.2893
YIQ	152.6940, 27.6450, 11.1090

Conversions

Conversions Part 2

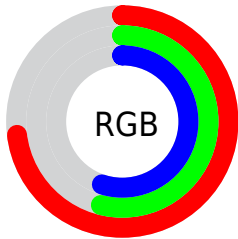
Format	Color
RYB	186, 138, 141
Decimal	12225165
CIELab	62.12, 18.71, 5.58
CIELCh	62, 19.520, 16.603
Yxy	30.5391, 0.3633, 0.3250
Android (android.graphics.Color)	4290415245 (0xFFBA8A8D)
YUV	152.6940, -5.7651, 29.2094
Hunter-Lab	55.2622, 13.5589, 7.2594

Details

The Yxy color **30.5391, 0.3633, 0.3250** is a light color, and the websafe version is hex **CC9999**. A complement of this color would be **43.9255, 0.2774, 0.3331**, and the grayscale version is **31.7315, 0.3127, 0.3290**.

A 20% lighter version of the original color is **60.6941, 0.3526, 0.3259**, and **12.6403, 0.3810, 0.3234** is the 20% darker color. If you saturate the color by 10%, you get **25.1734, 0.3918, 0.3234**, and if you desaturate by 10%, it is **36.9031, 0.3402, 0.3266**.

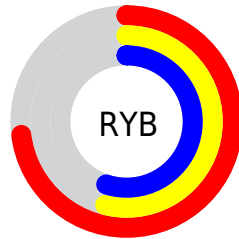
Distribution



Red (73%)

Green (54%)

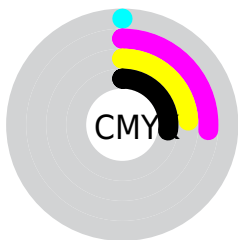
Blue (55%)



Red (73%)

Yellow (54%)

Blue (55%)

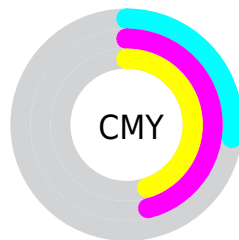


Cyan (0%)

Magenta (26%)

Yellow (24%)

Black (27%)



Cyan (27%)


Magenta (46%)


Yellow (45%)

Brightness & Saturation Gradients

These gradients show how the Yxy color 30.5391, 0.3633, 0.3250 changes by changing the brightness by 10 percent. The first figure shows a shift by +10% for each color and the second figure -10%.


Similar to the brightness gradients but the following saturation gradients show a change of the Yxy color 30.5391, 0.3633, 0.3250 by changing the saturation by 10% instead.


 30.5391, 0.3633,
0.3250


 30.5391, 0.3633,
0.3250


304.4093, 0.3360,
0.3275

 20.2481, 0.3708,
0.3242


 60.5137, 0.3529,
0.3261

 12.5755, 0.3810,
0.3229


 80.9661, 0.3491,
0.3264

 7.1369, 0.3953,
0.3210


 105.5745, 0.3460,
0.3267

 3.5479, 0.4173,
0.3177

134.7232, 0.3434,
0.3269

 1.4240, 0.4545,
0.3109

168.7966, 0.3412,
0.3271

 0.2343, 0.7435,
0.2565

208.1792, 0.3392,

 0.0000, 0.0000,

0.3273

0.0000

253.2553, 0.3375,
0.3274

■ 30.5391, 0.3633,
0.3250

■ 30.5391, 0.3633,
0.3250

■ 25.1734, 0.3918,
0.3234

■ 36.9031, 0.3402,
0.3266

■ 20.7514, 0.4264,
0.3220

■ 44.3079, 0.3217,
0.3282

■ 17.2197, 0.4671,
0.3209

■ 52.7987, 0.3068,
0.3296

■ 14.5179, 0.5122,
0.3206

■ 62.4169, 0.2948,
0.3309

■ 12.5783, 0.5578,
0.3212

■ 73.2017, 0.2851,
0.3321

■ 11.3222, 0.5977,
0.3231

■ 85.1902, 0.2772,
0.3332

■ 10.6512, 0.6255,
0.3259

■ 89.1743, 0.2731,
0.3289

■ 10.4596, 0.6336,
0.3264

Harmonies

Analogous

The Analogous color harmony consists of three colors that are next to each other on the color wheel.



30.5391, 0.3372, 0.3010



30.5391, 0.3633, 0.3250



30.5391, 0.3752, 0.3511

Triad

The Triadic color harmony groups three colors that are evenly spaced from another and form a triangle on the color wheel.



30.5391, 0.3633, 0.3250



30.5391, 0.3176, 0.3802



30.5391, 0.2585, 0.2833

Complementary

The Complementary color scheme is a pair of colors which are on the opposite of each other on the color wheel.



30.5391, 0.3633, 0.3250



43.9255, 0.2774, 0.3331

Split Complementary

Split-complementary colors differ from the complementary color scheme. The scheme consists of three colors, the original color and two neighbors of the complement color.



30.5391, 0.2541, 0.3020



30.5391, 0.3633, 0.3250



30.5391, 0.2871, 0.3595

Square

The Square scheme is like the rectangle color scheme, but the four colors are evenly spaced on the color wheel.



30.5391, 0.3633, 0.3250



30.5391, 0.3478, 0.3847



30.5391, 0.2642, 0.3300



30.5391, 0.2768, 0.2772

Rectangle

The Rectangle color scheme consists of four colors that form a rectangle on the color wheel.



30.5391, 0.3633, 0.3250



30.5391, 0.3731, 0.3667



30.5391, 0.2642, 0.3300



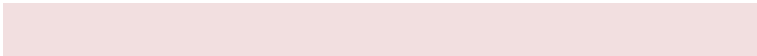
30.5391, 0.2554, 0.2882

Sweetspot

The Sweet Spot groups the original color and five complimentary colors.



30.5405, 0.3633, 0.3250



77.0130, 0.3257, 0.3278



31.7656, 0.3124, 0.2652



16.4991, 0.3284, 0.3276



95.5105, 0.3127, 0.3290



19.5994, 0.3127, 0.3290

Same Dimension

The Same Dimension uses a secret algorithm to generate beautiful new colors.



30.5405, 0.3633, 0.3250



49.5856, 0.3789, 0.3241



36.9961, 0.3596, 0.3577



9.0210, 0.3278, 0.3276



7.0442, 0.6321, 0.3256



0.2514, 0.6019, 0.3090

Inverse Universe

The Inverse Universe completely reimagines the original color for something new.



30.5405, 0.3633, 0.3250



49.5856, 0.3789, 0.3241



35.9269, 0.2727, 0.2984



9.0210, 0.3278, 0.3276



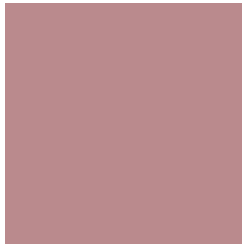
7.0442, 0.6321, 0.3256



0.2514, 0.6019, 0.3090

Previews

White Background



This preview shows how the Yxy color 30.5391, 0.3633, 0.3250 looks on a white background.

Color Contrast Check

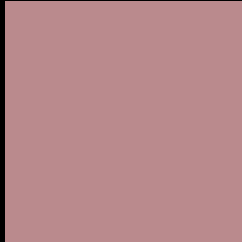
Large Text (above 18pt) WCAG AA × Fail

Any Text WCAG AA × Fail

Large Text (above 18pt) WCAG AAA × Fail

Any Text WCAG AAA × Fail

Black Background



This preview shows how the Yxy color 30.5391, 0.3633, 0.3250 looks on a black background.

Color Contrast Check

Large Text (above 18pt) WCAG AA ✓ Pass

Any Text WCAG AA ✓ Pass

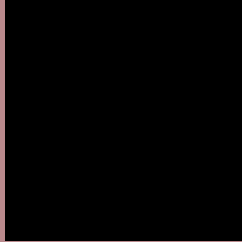
Large Text (above 18pt) WCAG AAA ✓ Pass

Any Text WCAG AAA ✓ Pass

If you want to check with other color combinations, try the [Color Contrast Checker](#).

Yxy 30.5391, 0.3633, 0.3250

Background



This preview shows how black text looks on a background with the Yxy color 30.5391, 0.3633, 0.3250.



This preview shows how white text looks on a background with the Yxy color 30.5391, 0.3633, 0.3250.

Color Blindness Simulation

Color vision deficiency is a very complex topic, and I could not describe the different causes any better than Wikipedia does, so if you want to learn more, you should check out their [article about color blindness](#).

Dichromacy



Original Color

30.5391, 0.3633, 0.3250

Protanopia

30.7893, 0.3197, 0.3336

Deuteranopia

30.5793, 0.3436, 0.3365



Tritanopia

30.5942, 0.3569, 0.3139

Trichromacy



Original Color

30.5391, 0.3633, 0.3250

Protanomaly

30.7091, 0.3349, 0.3306

Deuteranomaly

30.3534, 0.3510, 0.3320

Tritanomaly

30.5004, 0.3603, 0.3180

Monochromacy



Original Color

30.5391, 0.3633, 0.3250

Achromatopsia

31.8547, 0.3127, 0.3290

Achromatomaly

31.3491, 0.3295, 0.3276

CSS Examples

Text

The CSS property to change the color of the text to Yxy 30.5391, 0.3633, 0.3250 is called "color". The color property can be set on classes, ids or directly on the HTML element.

This example shows how text in the color `rgb(186, 138, 141)` looks like.

```
.text, #text, p{  
    color:rgb(186, 138, 141)  
}
```

If you want to add a text shadow in that color use the text-shadow property, you can generate a text shadow directly with our [CSS Text Shadow Generator](#).

Here you see how black text with a 4 pixel rgb(186, 138, 141) colored shadow looks like.

```
.shadow{ text-shadow: 4px 4px 2px rgb(186, 138, 141) }
```

Border

The CSS property to change the border of an element to Yxy 30.5391, 0.3633, 0.3250 is called "border". The border property can be set on classes, ids or directly on the HTML element.

This example shows the color as border, it can be applied via the CSS property "border" or "border-color".

```
.border, #border, table{ border:4px solid rgb(186, 138, 141) }
```

If only the border color should be changed use the property `border-color`.

```
.border{ border-color:rgb(186, 138, 141) }
```

If you want to add a box shadow in that color use:

Here you see how a box with a 4 pixel `rgb(186, 138, 141)` colored shadow looks like.

```
.boxshadow{ -moz-box-shadow:4px 4px 4px  
4px rgb(186, 138, 141); -webkit-box-  
shadow:4px 4px 4px 4px rgb(186, 138, 141);  
box-shadow:4px 4px 4px 4px rgb(186, 138,  
141) }
```


Background

The CSS property to change the background color of an element to Yxy 30.5391, 0.3633, 0.3250 is called "background". The background property can be set on classes, ids or directly on the HTML element.

```
.background, #background, body{  
background: rgb(186, 138, 141) }
```

If only the background color should be changed can be used:

```
.background{ background-color: rgb(186,  
138, 141) }
```

This example shows the color as background, it is applied via the CSS property "background".

To optimize and compress your CSS code, you can use our [online CSS compressor and optimizer](#) based on csstidy. If you want to create a linear or radial gradient as background or border, check our [CSS Gradient Generator](#).

Hey! You found this booklet interesting? Support Converting Colors with the new Membership Option!

The pro membership hides all ads, plus gives you double the colors in the color bucket, and more awesome pro features!

[Learn more, Memberships starting at \\$2.50/m!](#)

**Follow me
on Twitter!**

@ConvertingColor