

Converting Colors

$Yxy(30.5587, 0.3490, 0.3278)$

Have a look what the booklet for
Yxy(30.5587, 0.3490, 0.3278)
contains.

Yxy(30.5593, 0.3488, 0.3277)	3
Conversions	4
Details	6
Harmonies	12
Previews	24
Color Blindness Simulation	27
CSS Examples	30

Color

Yxy(30.5593, 0.3488, 0.3277)

Conversions

Conversions Part 1

Format	Color
Hex	B08E8F
RGB	176, 142, 143
RGB Percent	69%, 56%, 56%
CMY	0.3100, 0.4430, 0.4392
CMYK	0.00, 0.19, 0.19, 0.31
HSL	358°, 18%, 62%
HSV	358°, 19%, 69%
XYZ	32.5270, 30.5593, 30.1676
YIQ	152.2800, 19.9430, 7.5190

Conversions

Conversions Part 2

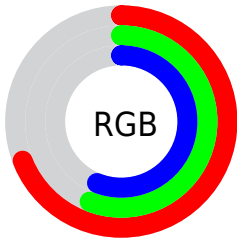
Format	Color
R_{YB}	176, 142, 143
Decimal	11570831
CIE _{Lab}	62.13, 12.95, 4.33
CIE _{LCh}	62, 13.655, 18.486
Yxy	30.5593, 0.3488, 0.3277
Android (android.graphics.Color)	4289760911 (0xFFB08E8F)
YUV	152.2800, -4.5750, 20.8024
Hunter-Lab	55.2805, 8.2884, 6.3406

Details

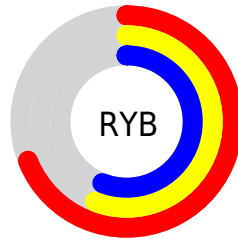
The Yxy color **30.5593, 0.3488, 0.3277** is a light color, and the websafe version is hex **CC9999**. A complement of this color would be **39.8796, 0.2850, 0.3303**, and the grayscale version is **31.5394, 0.3127, 0.3290**.

A 20% lighter version of the original color is **60.6669, 0.3411, 0.3280**, and **12.6556, 0.3611, 0.3271** is the 20% darker color. If you saturate the color by 10%, you get **25.2514, 0.3744, 0.3270**, and if you desaturate by 10%, it is **36.7755, 0.3282, 0.3284**.

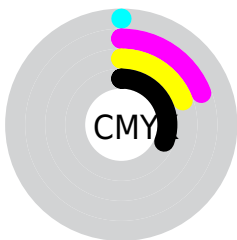
Distribution



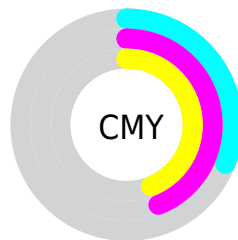
- Red (69%)
- Green (56%)
- Blue (56%)



- Red (69%)
- Yellow (56%)
- Blue (56%)



- Cyan (0%)
- Magenta (19%)
- Yellow (19%)
- Black (31%)





- Cyan (31%)
- Magenta (44%)
- Yellow (44%)

Brightness & Saturation Gradients


These gradients show how the Yxy color 30.5593, 0.3488, 0.3277 changes by changing the brightness by 10 percent. The first figure shows a shift by +10% for each color and the second figure -10%.

Similar to the brightness gradients but the following saturation gradients show a change of the Yxy color 30.5593, 0.3488, 0.3277 by changing the saturation by 10% instead.

 30.5593, 0.3488,
0.3277

 30.5593, 0.3488,
0.3277


304.5029, 0.3294,
0.3286

 20.2635, 0.3542,
0.3274


 60.5456, 0.3414,
0.3281

 12.5867, 0.3614,
0.3269


 81.0048, 0.3387,
0.3282

 7.1446, 0.3716,
0.3261


 105.6207, 0.3365,
0.3283

 3.5527, 0.3873,
0.3246

134.7775, 0.3346,
0.3284

 1.4266, 0.4142,
0.3214

168.8598, 0.3330,
0.3285

 0.2362, 0.6959,
0.3041

208.2518, 0.3316,

 0.0000, 0.0000,

0.3285

0.0000

253.3380, 0.3304,
0.3286

■ 30.5593, 0.3488,
0.3277

■ 30.5593, 0.3488,
0.3277

■ 25.2514, 0.3744,
0.3270

■ 36.7755, 0.3282,
0.3284

■ 20.8053, 0.4060,
0.3263

■ 43.9351, 0.3116,
0.3290

■ 17.1768, 0.4439,
0.3258

■ 52.0769, 0.2984,
0.3296

■ 14.3161, 0.4876,
0.3255

■ 61.2358, 0.2876,
0.3302

■ 12.1681, 0.5343,
0.3256

■ 71.4452, 0.2789,
0.3307

■ 10.6701, 0.5787,
0.3262

■ 82.7372, 0.2718,
0.3311

■ 9.7488, 0.6140,
0.3274

■ 87.9646, 0.2681,
0.3289

■ 9.2657, 0.6356,
0.3282

■ 9.2356, 0.6369,
0.3282

Harmonies

Analogous

The Analogous color harmony consists of three colors that are next to each other on the color wheel.



30.5593, 0.3313, 0.3101



30.5593, 0.3488, 0.3277



30.5593, 0.3563, 0.3462

Triad

The Triadic color harmony groups three colors that are evenly spaced from another and form a triangle on the color wheel.



30.5593, 0.3488, 0.3277



30.5593, 0.3151, 0.3636



30.5593, 0.2749, 0.2964

Complementary

The Complementary color scheme is a pair of colors which are on the opposite of each other on the color wheel.



30.5593, 0.3488, 0.3277



39.8796, 0.2850, 0.3303

Split Complementary

Split-complementary colors differ from the complementary color scheme. The scheme consists of three colors, the original color and two neighbors of the complement color.



30.5593, 0.2710, 0.3094



30.5593, 0.3488, 0.3277



30.5593, 0.2937, 0.3490

Square

The Square scheme is like the rectangle color scheme, but the four colors are evenly spaced on the color wheel.



30.5593, 0.3488, 0.3277



30.5593, 0.3363, 0.3679



30.5593, 0.2778, 0.3287



30.5593, 0.2886, 0.2923

Rectangle

The Rectangle color scheme consists of four colors that form a rectangle on the color wheel.



30.5593, 0.3488, 0.3277



30.5593, 0.3545, 0.3568



30.5593, 0.2778, 0.3287



30.5593, 0.2724, 0.2998

Sweetspot

The Sweet Spot groups the original color and five complimentary colors.



30.5607, 0.3488, 0.3277



70.6781, 0.3225, 0.3286



31.5792, 0.3138, 0.2819



15.1449, 0.3236, 0.3286



89.0005, 0.3127, 0.3290



17.0645, 0.3127, 0.3290

Same Dimension

The Same Dimension uses a secret algorithm to generate beautiful new colors.



30.5607, 0.3488, 0.3277



51.2955, 0.3587, 0.3274



35.5834, 0.3457, 0.3517



8.5091, 0.3283, 0.3284



6.7819, 0.6363, 0.3279



0.2147, 0.6207, 0.3193

Inverse Universe

The Inverse Universe completely reimagines the original color for something new.



30.5607, 0.3488, 0.3277



51.2955, 0.3587, 0.3274



34.0686, 0.2830, 0.3052



8.5091, 0.3283, 0.3284



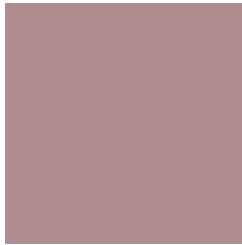
6.7819, 0.6363, 0.3279



0.2147, 0.6207, 0.3193

Previews

White Background



This preview shows how the Yxy color 30.5593, 0.3488, 0.3277 looks on a white background.

Color Contrast Check

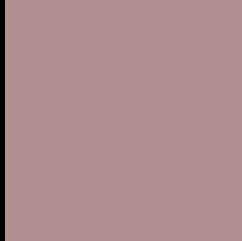
Large Text (above 18pt) WCAG AA × Fail

Any Text WCAG AA × Fail

Large Text (above 18pt) WCAG AAA × Fail

Any Text WCAG AAA × Fail

Black Background



This preview shows how the Yxy color 30.5593, 0.3488, 0.3277 looks on a black background.

Color Contrast Check

Large Text (above 18pt) WCAG AA ✓ Pass

Any Text WCAG AA ✓ Pass

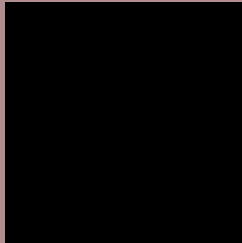
Large Text (above 18pt) WCAG AAA ✓ Pass

Any Text WCAG AAA ✓ Pass

If you want to check with other color combinations, try the [Color Contrast Checker](#).

Yxy 30.5593, 0.3488, 0.3277

Background



This preview shows how black text looks on a background with the Yxy color 30.5593, 0.3488, 0.3277.



This preview shows how white text looks on a background with the Yxy color 30.5593, 0.3488, 0.3277.

Color Blindness Simulation

Color vision deficiency is a very complex topic, and I could not describe the different causes any better than Wikipedia does, so if you want to learn more, you should check out their [article about color blindness](#).

Dichromacy



Original Color

30.5593, 0.3488, 0.3277

Protanopia

30.7893, 0.3197, 0.3336

Deuteranopia

30.5286, 0.3404, 0.3335



Tritanopia

30.6639, 0.3405, 0.3134

Trichromacy



Original Color

30.5593, 0.3488, 0.3277

Protanomaly

30.6241, 0.3295, 0.3306

Deuteranomaly

30.5574, 0.3439, 0.3320

Tritanomaly

30.5668, 0.3437, 0.3176

Monochromacy



Original Color

30.5593, 0.3488, 0.3277

Achromatopsia

31.3989, 0.3127, 0.3290

Achromatomaly

30.9268, 0.3253, 0.3275

CSS Examples

Text

The CSS property to change the color of the text to Yxy 30.5593, 0.3488, 0.3277 is called "color". The color property can be set on classes, ids or directly on the HTML element.

This example shows how text in the color `rgb(176, 142, 143)` looks like.

```
.text, #text, p{  
    color:rgb(176, 142, 143)  
}
```

If you want to add a text shadow in that color use the text-shadow property, you can generate a text shadow directly with our [CSS Text Shadow Generator](#).

Here you see how black text with a 4 pixel rgb(176, 142, 143) colored shadow looks like.

```
.shadow{ text-shadow: 4px 4px 2px rgb(176, 142, 143) }
```

Border

The CSS property to change the border of an element to Yxy 30.5593, 0.3488, 0.3277 is called "border". The border property can be set on classes, ids or directly on the HTML element.

This example shows the color as border, it can be applied via the CSS property "border" or "border-color".

```
.border, #border, table{ border:4px solid rgb(176, 142, 143) }
```

If only the border color should be changed use the property `border-color`.

```
.border{ border-color:rgb(176, 142, 143) }
```

If you want to add a box shadow in that color use:

Here you see how a box with a 4 pixel `rgb(176, 142, 143)` colored shadow looks like.

```
.boxshadow{ -moz-box-shadow:4px 4px 4px  
4px rgb(176, 142, 143); -webkit-box-  
shadow:4px 4px 4px 4px rgb(176, 142, 143);  
box-shadow:4px 4px 4px 4px rgb(176, 142,  
143) }
```


Background

The CSS property to change the background color of an element to Yxy 30.5593, 0.3488, 0.3277 is called "background". The background property can be set on classes, ids or directly on the HTML element.

```
.background, #background, body{  
background: rgb(176, 142, 143) }
```

If only the background color should be changed can be used:

```
.background{ background-color: rgb(176,  
142, 143) }
```

This example shows the color as background, it is applied via the CSS property "background".

To optimize and compress your CSS code, you can use our [online CSS compressor and optimizer](#) based on csstidy. If you want to create a linear or radial gradient as background or border, check our [CSS Gradient Generator](#).

Hey! You found this booklet interesting? Support Converting Colors with the new Membership Option!

The pro membership hides all ads, plus gives you double the colors in the color bucket, and more awesome pro features!

[Learn more, Memberships starting at \\$2.50/m!](#)

**Follow me
on Twitter!**

@ConvertingColor