

Converting Colors

$Y_{xy}(30.7999, 0.3560, 0.3217)$

Have a look what the booklet for
Yxy(30.7999, 0.3560, 0.3217)
contains.

Yxy(30.9908, 0.3561, 0.3221)	3
Conversions	4
Details	6
Harmonies	12
Previews	24
Color Blindness Simulation	27
CSS Examples	30

Color

Yxy(30.9908, 0.3561, 0.3221)

Conversions

Conversions Part 1

Format	Color
Hex	B88C91
RGB	184, 140, 145
RGB Percent	72%, 55%, 57%
CMY	0.2783, 0.4510, 0.4314
CMYK	0.00, 0.24, 0.21, 0.28
HSL	353°, 24%, 64%
HSV	353°, 24%, 72%
XYZ	34.2621, 30.9908, 30.9619
YIQ	153.7260, 24.6190, 10.8830

Conversions

Conversions Part 2

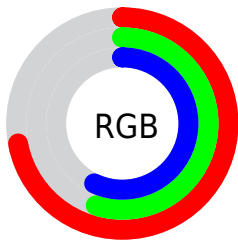
Format	Color
RYB	184, 140, 145
Decimal	12094609
CIELab	62.50, 17.48, 3.83
CIELCh	62, 17.898, 12.344
Yxy	30.9908, 0.3561, 0.3221
Android (android.graphics.Color)	4290284689 (0xFFB88C91)
YUV	153.7260, -4.3019, 26.5503
Hunter-Lab	55.6694, 12.4376, 5.9929

Details

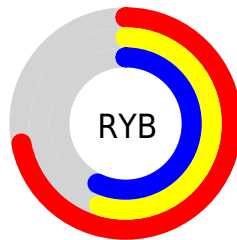
The Yxy color **30.9908, 0.3561, 0.3221** is a light color, and the websafe version is hex **CC9999**. A complement of this color would be **43.1265, 0.2814, 0.3361**, and the grayscale version is **32.2011, 0.3127, 0.3290**.

A 20% lighter version of the original color is **61.4079, 0.3473, 0.3237**, and **12.8844, 0.3701, 0.3194** is the 20% darker color. If you saturate the color by 10%, you get **25.5891, 0.3819, 0.3191**, and if you desaturate by 10%, it is **37.3671, 0.3352, 0.3251**.

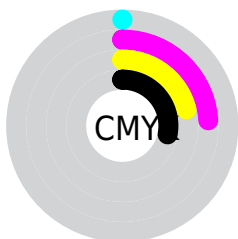
Distribution



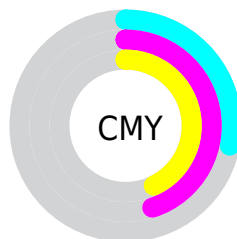
- Red (72%)
- Green (55%)
- Blue (57%)



- Red (72%)
- Yellow (55%)
- Blue (57%)



- Cyan (0%)
- Magenta (24%)
- Yellow (21%)
- Black (28%)





- Cyan (28%)
- Magenta (45%)
- Yellow (43%)

Brightness & Saturation Gradients


These gradients show how the Yxy color 30.9908, 0.3561, 0.3221 changes by changing the brightness by 10 percent. The first figure shows a shift by +10% for each color and the second figure -10%.


Similar to the brightness gradients but the following saturation gradients show a change of the Yxy color 30.9908, 0.3561, 0.3221 by changing the saturation by 10% instead.


 30.9908, 0.3561,
0.3221


 30.9908, 0.3561,
0.3221


306.4959, 0.3328,
0.3260

 20.5918, 0.3625,
0.3209


 61.2256, 0.3472,
0.3237

 12.8260, 0.3711,
0.3193


 81.8302, 0.3440,
0.3242

 7.3088, 0.3833,
0.3169


 106.6055, 0.3414,
0.3246

 3.6560, 0.4018,
0.3130

135.9359, 0.3391,
0.3250

 1.4830, 0.4332,
0.3058

170.2057, 0.3372,
0.3253

 0.2768, 0.6896,
0.2766

209.7994, 0.3355,

 0.0000, 0.0000,

0.3256

0.0000

255.1013, 0.3341,
0.3258

■ 30.9908, 0.3561,
0.3221

■ 30.9908, 0.3561,
0.3221

■ 25.5891, 0.3819,
0.3191

■ 37.3671, 0.3352,
0.3251

■ 21.1098, 0.4133,
0.3162

■ 44.7581, 0.3184,
0.3279

■ 17.5027, 0.4505,
0.3139

■ 53.2070, 0.3048,
0.3306

■ 14.7107, 0.4927,
0.3126

■ 62.7532, 0.2939,
0.3330

■ 12.6702, 0.5371,
0.3130

■ 73.4341, 0.2850,
0.3351

■ 11.3079, 0.5787,
0.3155

■ 85.2852, 0.2777,
0.3371

■ 10.5359, 0.6116,
0.3199

■ 88.9348, 0.2721,
0.3289

■ 10.2487, 0.6262,
0.3224

Harmonies

Analogous

The Analogous color harmony consists of three colors that are next to each other on the color wheel.



30.9908, 0.3311, 0.3006



30.9908, 0.3561, 0.3221



30.9908, 0.3691, 0.3461

Triad

The Triadic color harmony groups three colors that are evenly spaced from another and form a triangle on the color wheel.



30.9908, 0.3561, 0.3221



30.9908, 0.3214, 0.3770



30.9908, 0.2617, 0.2890

Complementary

The Complementary color scheme is a pair of colors which are on the opposite of each other on the color wheel.



30.9908, 0.3561, 0.3221



43.1265, 0.2814, 0.3361

Split Complementary

Split-complementary colors differ from the complementary color scheme. The scheme consists of three colors, the original color and two neighbors of the complement color.



30.9908, 0.2595, 0.3077



30.9908, 0.3561, 0.3221



30.9908, 0.2931, 0.3601

Square

The Square scheme is like the rectangle color scheme, but the four colors are evenly spaced on the color wheel.



30.9908, 0.3561, 0.3221



30.9908, 0.3483, 0.3791



30.9908, 0.2707, 0.3340



30.9908, 0.2769, 0.2816

Rectangle

The Rectangle color scheme consists of four colors that form a rectangle on the color wheel.



30.9908, 0.3561, 0.3221



30.9908, 0.3688, 0.3608



30.9908, 0.2707, 0.3340



30.9908, 0.2594, 0.2941

Sweetspot

The Sweet Spot groups the original color and five complimentary colors.



30.9922, 0.3561, 0.3221



76.6328, 0.3234, 0.3271



31.7869, 0.3103, 0.2695



16.3463, 0.3243, 0.3269



93.3107, 0.3127, 0.3290



18.7317, 0.3127, 0.3290

Same Dimension

The Same Dimension uses a secret algorithm to generate beautiful new colors.



30.9922, 0.3561, 0.3221



50.5103, 0.3698, 0.3204



36.1594, 0.3563, 0.3526



9.0284, 0.3270, 0.3264



7.0657, 0.6242, 0.3213



0.2546, 0.5742, 0.2937

Inverse Universe

The Inverse Universe completely reimagines the original color for something new.



30.9922, 0.3561, 0.3221



50.5103, 0.3698, 0.3204



36.7299, 0.2759, 0.3042



9.0284, 0.3270, 0.3264



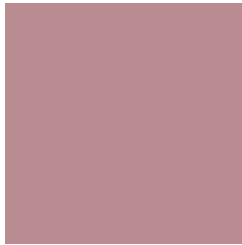
7.0657, 0.6242, 0.3213



0.2546, 0.5742, 0.2937

Previews

White Background



This preview shows how the Yxy color 30.9908, 0.3561, 0.3221 looks on a white background.

Color Contrast Check

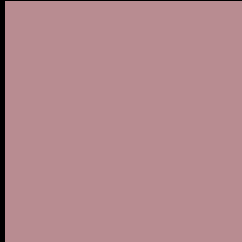
Large Text (above 18pt) WCAG AA × Fail

Any Text WCAG AA × Fail

Large Text (above 18pt) WCAG AAA × Fail

Any Text WCAG AAA × Fail

Black Background



This preview shows how the Yxy color 30.9908, 0.3561, 0.3221 looks on a black background.

Color Contrast Check

Large Text (above 18pt) WCAG AA ✓ Pass

Any Text WCAG AA ✓ Pass

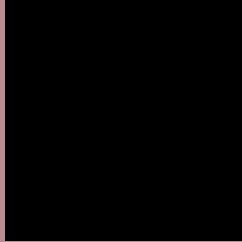
Large Text (above 18pt) WCAG AAA ✓ Pass

Any Text WCAG AAA ✓ Pass

If you want to check with other color combinations, try the [Color Contrast Checker](#).

Yxy 30.9908, 0.3561, 0.3221

Background



This preview shows how black text looks on a background with the Yxy color 30.9908, 0.3561, 0.3221.



This preview shows how white text looks on a background with the Yxy color 30.9908, 0.3561, 0.3221.

Color Blindness Simulation

Color vision deficiency is a very complex topic, and I could not describe the different causes any better than Wikipedia does, so if you want to learn more, you should check out their [article about color blindness](#).

Dichromacy



Original Color

30.9908, 0.3561, 0.3221

Protanopia

31.2376, 0.3158, 0.3290

Deuteranopia

31.0064, 0.3392, 0.3320



Tritanopia

30.9815, 0.3519, 0.3138

Trichromacy



Original Color

30.9908, 0.3561, 0.3221

Protanomaly

31.0367, 0.3296, 0.3261

Deuteranomaly

30.9588, 0.3451, 0.3291

Tritanomaly

30.9176, 0.3541, 0.3166

Monochromacy



Original Color

30.9908, 0.3561, 0.3221

Achromatopsia

32.3143, 0.3127, 0.3290

Achromatomaly

31.7286, 0.3273, 0.3261

CSS Examples

Text

The CSS property to change the color of the text to Yxy 30.9908, 0.3561, 0.3221 is called "color". The color property can be set on classes, ids or directly on the HTML element.

This example shows how text in the color `rgb(184, 140, 145)` looks like.

```
.text, #text, p{  
    color:rgb(184, 140, 145)  
}
```

If you want to add a text shadow in that color use the text-shadow property, you can generate a text shadow directly with our [CSS Text Shadow Generator](#).

Here you see how black text with a 4 pixel rgb(184, 140, 145) colored shadow looks like.

```
.shadow{ text-shadow: 4px 4px 2px rgb(184, 140, 145) }
```

Border

The CSS property to change the border of an element to Yxy 30.9908, 0.3561, 0.3221 is called "border". The border property can be set on classes, ids or directly on the HTML element.

This example shows the color as border, it can be applied via the CSS property "border" or "border-color".

```
.border, #border, table{ border:4px solid rgb(184, 140, 145) }
```

If only the border color should be changed use the property `border-color`.

```
.border{ border-color:rgb(184, 140, 145) }
```

If you want to add a box shadow in that color use:

Here you see how a box with a 4 pixel `rgb(184, 140, 145)` colored shadow looks like.

```
.boxshadow{ -moz-box-shadow:4px 4px 4px  
4px rgb(184, 140, 145); -webkit-box-  
shadow:4px 4px 4px 4px rgb(184, 140, 145);  
box-shadow:4px 4px 4px 4px rgb(184, 140,  
145) }
```


Background

The CSS property to change the background color of an element to Yxy 30.9908, 0.3561, 0.3221 is called "background". The background property can be set on classes, ids or directly on the HTML element.

```
.background, #background, body{  
background: rgb(184, 140, 145) }
```

If only the background color should be changed can be used:

```
.background{ background-color: rgb(184,  
140, 145) }
```

This example shows the color as background, it is applied via the CSS property "background".

To optimize and compress your CSS code, you can use our [online CSS compressor and optimizer](#) based on csstidy. If you want to create a linear or radial gradient as background or border, check our [CSS Gradient Generator](#).

Hey! You found this booklet interesting? Support Converting Colors with the new Membership Option!

The pro membership hides all ads, plus gives you double the colors in the color bucket, and more awesome pro features!

[Learn more, Memberships starting at \\$2.50/m!](#)

**Follow me
on Twitter!**

@ConvertingColor