

# Converting Colors

$Yxy(30.7999, 0.3692, 0.3606)$

Have a look what the booklet for  
Yxy(30.7999, 0.3692, 0.3606)  
contains.

<b>Yxy(30.9110, 0.3694, 0.3613)</b> .....	3
<b><i>Conversions</i></b> .....	4
<b><i>Details</i></b> .....	6
<b><i>Harmonies</i></b> .....	12
<b><i>Previews</i></b> .....	24
<b><i>Color Blindness Simulation</i></b> .....	27
<b><i>CSS Examples</i></b> .....	30

# Color

**Yxy(30.9110, 0.3694, 0.3613)**

# Conversions

## Conversions Part 1

Format	Color
Hex	B0917B
RGB	176, 145, 123
RGB Percent	69%, 57%, 48%
CMY	0.3098, 0.4313, 0.5176
CMYK	0.00, 0.18, 0.30, 0.31
HSL	25°, 25%, 59%
HSV	25°, 30%, 69%
XYZ	31.6040, 30.9110, 23.0399
YIQ	151.7610, 25.5380, -0.2700

# Conversions

## Conversions Part 2

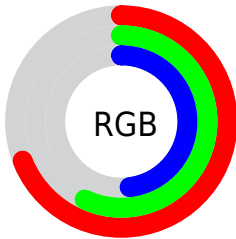
Format	Color
<a href="#">RYB</a>	<a href="#">176, 161, 123</a>
Decimal	<a href="#">11571579</a>
CIELab	<a href="#">62.43, 8.32, 16.05</a>
CIElCh	<a href="#">62, 18.078, 62.585</a>
Yxy	<a href="#">30.9110, 0.3694, 0.3613</a>
Android (android.graphics.Color)	<a href="#">4289761659 (0xFFB0917B)</a>
YUV	<a href="#">151.7610, -14.1792, 21.2576</a>
Hunter-Lab	<a href="#">55.5977, 4.1708, 14.3483</a>

# Details

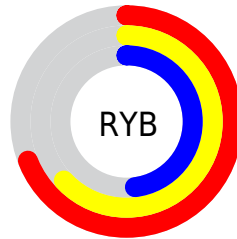
The Yxy color **30.9110, 0.3694, 0.3613** is a light color, and the websafe version is hex **CC9999**. A complement of this color would be **30.4529, 0.2662, 0.2942**, and the grayscale version is **31.3456, 0.3127, 0.3290**.

A 20% lighter version of the original color is **61.1372, 0.3571, 0.3548**, and **12.8164, 0.3880, 0.3724** is the 20% darker color. If you saturate the color by 10%, you get **27.5064, 0.3940, 0.3724**, and if you desaturate by 10%, it is **34.6827, 0.3478, 0.3501**.

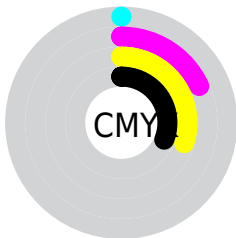
# Distribution



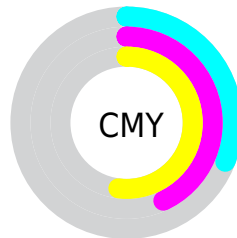
- Red (69%)
- Green (57%)
- Blue (48%)



- Red (69%)
- Yellow (63%)
- Blue (48%)



- Cyan (0%)
- Magenta (18%)
- Yellow (30%)
- Black (31%)




- Cyan (31%)
- Magenta (43%)
- Yellow (52%)


# Brightness & Saturation Gradients

These gradients show how the Yxy color 30.9110, 0.3694, 0.3613 changes by changing the brightness by 10 percent. The first figure shows a shift by +10% for each color and the second figure -10%.


Similar to the brightness gradients but the following saturation gradients show a change of the Yxy color 30.9110, 0.3694, 0.3613 by changing the saturation by 10% instead.





 30.9110, 0.3694,  
0.3613

 30.9110, 0.3694,  
0.3613


306.1281, 0.3390,  
0.3446

 20.5311, 0.3777,  
0.3656


 61.0999, 0.3578,  
0.3551

 12.7817, 0.3888,  
0.3711


 81.6777, 0.3536,  
0.3529

 7.2784, 0.4044,  
0.3784


 106.4236, 0.3501,  
0.3509

 3.6368, 0.4276,  
0.3884

135.7220, 0.3472,  
0.3493

 1.4725, 0.4797,  
0.4144

169.9572, 0.3447,  
0.3479

 0.2693, 0.6303,  
0.3697

209.5137, 0.3425,

 0.0000, 0.0000,

0.3467

0.0000

254.7759, 0.3406,  
0.3456

■ 30.9110, 0.3694,  
0.3613

■ 30.9110, 0.3694,  
0.3613

■ 27.5064, 0.3940,  
0.3724

■ 34.6827, 0.3478,  
0.3501

■ 24.4527, 0.4215,  
0.3829

■ 38.8283, 0.3291,  
0.3393

■ 21.7389, 0.4514,  
0.3918

■ 43.3599, 0.3129,  
0.3291


■ 19.3517, 0.4825,  
0.3978


■ 48.2877, 0.2990,  
0.3196

■ 17.2766, 0.5131,  
0.3999

■ 53.6214, 0.2870,  
0.3109


 15.4975, 0.5410,  
0.3969

 59.3706, 0.2767,  
0.3028

 14.0052, 0.5647,  
0.3898

 65.5443, 0.2678,  
0.2955

 71.5717, 0.2645,  
0.2980

 77.3817, 0.2658,  
0.3097

# Harmonies

## Analogous

The Analogous color harmony consists of three colors that are next to each other on the color wheel.



30.9110, 0.3671, 0.3384



30.9110, 0.3694, 0.3613



30.9110, 0.3558, 0.3771

# Triad

The Triadic color harmony groups three colors that are evenly spaced from another and form a triangle on the color wheel.



30.9110, 0.3694, 0.3613



30.9110, 0.2766, 0.3431



30.9110, 0.2928, 0.2829

# Complementary

The Complementary color scheme is a pair of colors which are on the opposite of each other on the color wheel.



30.9110, 0.3694, 0.3613



30.4529, 0.2662, 0.2942

# Split Complementary

Split-complementary colors differ from the complementary color scheme. The scheme consists of three colors, the original color and two neighbors of the complement color.



30.9110, 0.2702, 0.2822



30.9110, 0.3694, 0.3613



30.9110, 0.2612, 0.3156

# Square

The Square scheme is like the rectangle color scheme, but the four colors are evenly spaced on the color wheel.



30.9110, 0.3694, 0.3613



30.9110, 0.3019, 0.3675



30.9110, 0.2589, 0.2936



30.9110, 0.3218, 0.2946



# Rectangle

The Rectangle color scheme consists of four colors that form a rectangle on the color wheel.



30.9110, 0.3694, 0.3613



30.9110, 0.3400, 0.3807



30.9110, 0.2589, 0.2936



30.9110, 0.2842, 0.2814

# Sweetspot

The Sweet Spot groups the original color and five complimentary colors.



30.9124, 0.3694, 0.3613



71.1797, 0.3274, 0.3383



25.7556, 0.3398, 0.2833



15.1823, 0.3299, 0.3398



89.0005, 0.3127, 0.3290



17.0645, 0.3127, 0.3290



# Same Dimension

The Same Dimension uses a secret algorithm to generate beautiful new colors.



30.9124, 0.3694, 0.3613



51.9676, 0.3851, 0.3686



39.6700, 0.3593, 0.3961



9.0657, 0.3277, 0.3385



10.3867, 0.5629, 0.3912



0.4431, 0.5134, 0.4306



# Inverse Universe

The Inverse Universe completely reimagines the original color for something new.



30.4529, 0.2662, 0.2942



50.9933, 0.2562, 0.2854



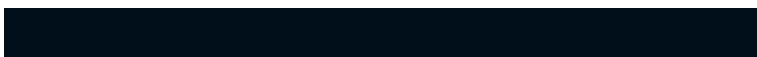
22.8625, 0.2615, 0.2516



9.0281, 0.2986, 0.3193



9.5225, 0.1859, 0.1891

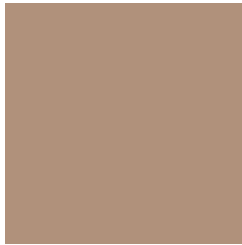


0.4115, 0.1979, 0.2323



# Previews

## White Background



This preview shows how the Yxy color 30.9110, 0.3694, 0.3613 looks on a white background.

## Color Contrast Check

Large Text (above 18pt) WCAG AA × Fail

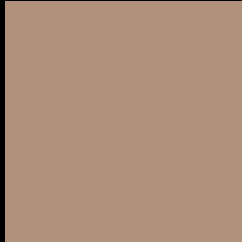
Any Text WCAG AA × Fail

Large Text (above 18pt) WCAG AAA × Fail

Any Text WCAG AAA × Fail



# Black Background



This preview shows how the Yxy color 30.9110, 0.3694, 0.3613 looks on a black background.

## Color Contrast Check

Large Text (above 18pt) WCAG AA ✓ Pass

Any Text WCAG AA ✓ Pass

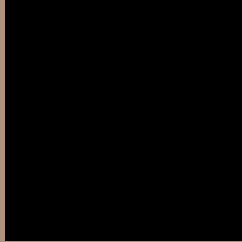
Large Text (above 18pt) WCAG AAA ✓ Pass

Any Text WCAG AAA ✓ Pass

If you want to check with other color combinations, try the [Color Contrast Checker](#).

**Yxy 30.9110, 0.3694, 0.3613**

## **Background**



This preview shows how black text looks on a background with the Yxy color 30.9110, 0.3694, 0.3613.



This preview shows how white text looks on a background with the Yxy color 30.9110, 0.3694, 0.3613.

# Color Blindness Simulation

Color vision deficiency is a very complex topic, and I could not describe the different causes any better than Wikipedia does, so if you want to learn more, you should check out their [article about color blindness](#).

## Dichromacy



### Original Color

30.9110, 0.3694, 0.3613

### Protanopia

31.1132, 0.3465, 0.3676

### Deuteranopia

30.7948, 0.3683, 0.3614



## Tritanopia

30.9005, 0.3427, 0.3135

# Trichromacy



**Original Color**

30.9110, 0.3694, 0.3613

**Protanomaly**

31.0826, 0.3547, 0.3654

**Deuteranomaly**

30.7948, 0.3683, 0.3614

**Tritanomaly**

30.7341, 0.3532, 0.3306

# Monochromacy



**Original Color**

30.9110, 0.3694, 0.3613

**Achromatopsia**

31.3989, 0.3127, 0.3290

**Achromatomaly**

30.9950, 0.3331, 0.3412

# CSS Examples

## Text

The CSS property to change the color of the text to Yxy 30.9110, 0.3694, 0.3613 is called "color". The color property can be set on classes, ids or directly on the HTML element.

This example shows how text in the color `rgb(176, 145, 123)` looks like.

```
.text, #text, p{  
    color:rgb(176, 145, 123)  
}
```

If you want to add a text shadow in that color use the text-shadow property, you can generate a text shadow directly with our [CSS Text Shadow Generator](#).

Here you see how black text with a 4 pixel rgb(176, 145, 123) colored shadow looks like.

```
.shadow{ text-shadow: 4px 4px 2px rgb(176, 145, 123) }
```

## Border

The CSS property to change the border of an element to Yxy 30.9110, 0.3694, 0.3613 is called "border". The border property can be set on classes, ids or directly on the HTML element.

This example shows the color as border, it can be applied via the CSS property "border" or "border-color".

```
.border, #border, table{ border:4px solid rgb(176, 145, 123) }
```

If only the border color should be changed use the property `border-color`.

```
.border{ border-color:rgb(176, 145, 123) }
```

If you want to add a box shadow in that color use:

Here you see how a box with a 4 pixel `rgb(176, 145, 123)` colored shadow looks like.

```
.boxshadow{ -moz-box-shadow:4px 4px 4px  
4px rgb(176, 145, 123); -webkit-box-  
shadow:4px 4px 4px 4px rgb(176, 145, 123);  
box-shadow:4px 4px 4px 4px rgb(176, 145,  
123) }
```



# Background

The CSS property to change the background color of an element to Yxy 30.9110, 0.3694, 0.3613 is called "background". The background property can be set on classes, ids or directly on the HTML element.

```
.background, #background, body{  
background: rgb(176, 145, 123) }
```

If only the background color should be changed can be used:

```
.background{ background-color: rgb(176,  
145, 123) }
```

This example shows the color as background, it is applied via the CSS property "background".

To optimize and compress your CSS code, you can use our [online CSS compressor and optimizer](#) based on csstidy. If you want to create a linear or radial gradient as background or border, check our [CSS Gradient Generator](#).

Hey! You found this booklet interesting? Support Converting Colors with the new Membership Option!

The pro membership hides all ads, plus gives you double the colors in the color bucket, and more awesome pro features!

**[Learn more, Memberships starting at \\$2.50/m!](#)**

**Follow me  
on Twitter!**

@ConvertingColor