

Converting Colors

Yxy(31.5869, 0.3656, 0.3333)

Have a look what the booklet for
Yxy(31.5869, 0.3656, 0.3333)
contains.

Yxy(31.7749, 0.3653, 0.3333)	3
Conversions	4
Details	6
Harmonies	12
Previews	24
Color Blindness Simulation	27
CSS Examples	30

Color

Yxy(31.7749, 0.3653, 0.3333)

Conversions

Conversions Part 1

Format	Color
Hex	BB8E8B
RGB	187, 142, 139
RGB Percent	73%, 56%, 55%
CMY	0.2667, 0.4431, 0.4548
CMYK	0.00, 0.24, 0.26, 0.27
HSL	4°, 26%, 64%
HSV	4°, 26%, 73%
XYZ	34.8256, 31.7749, 28.7337
YIQ	155.1130, 27.7830, 8.6070

Conversions

Conversions Part 2

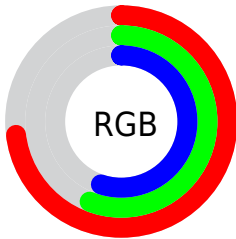
Format	Color
R_{YB}	187, 142, 139
Decimal	12291723
CIE _{Lab}	63.16, 16.59, 8.19
CIE _{LCh}	63, 18.507, 26.274
Yxy	31.7749, 0.3653, 0.3333
Android (android.graphics.Color)	4290481803 (0xFFBB8E8B)
YUV	155.1130, -7.9437, 27.9649
Hunter-Lab	56.3692, 11.6333, 9.2359

Details

The Yxy color **31.7749, 0.3653, 0.3333** is a light color, and the websafe version is hex **CC9999**. A complement of this color would be **43.3613, 0.2752, 0.3247**, and the grayscale version is **32.8587, 0.3127, 0.3290**.

A 20% lighter version of the original color is **62.5187, 0.3550, 0.3334**, and **13.3621, 0.3836, 0.3350** is the 20% darker color. If you saturate the color by 10%, you get **26.4610, 0.3947, 0.3351**, and if you desaturate by 10%, it is **38.0062, 0.3413, 0.3315**.

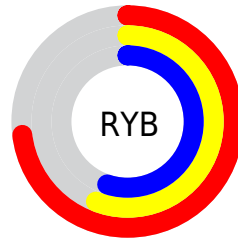
Distribution



Red (73%)

Green (56%)

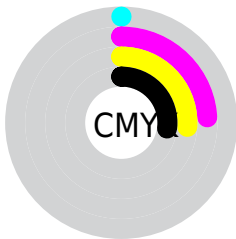
Blue (55%)



Red (73%)

Yellow (56%)

Blue (55%)

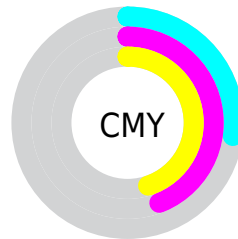


Cyan (0%)

Magenta (24%)

Yellow (26%)

Black (27%)



Cyan (27%)

Magenta (44%)

Yellow (45%)

Brightness & Saturation Gradients


These gradients show how the Yxy color 31.7749, 0.3653, 0.3333 changes by changing the brightness by 10 percent. The first figure shows a shift by +10% for each color and the second figure -10%.


Similar to the brightness gradients but the following saturation gradients show a change of the Yxy color 31.7749, 0.3653, 0.3333 by changing the saturation by 10% instead.

 31.7749, 0.3653,
0.3333


 31.7749, 0.3653,
0.3333


310.0926, 0.3371,
0.3315

 21.1896, 0.3730,
0.3336


 62.4580, 0.3546,
0.3328

 13.2627, 0.3834,
0.3339


 83.3247, 0.3507,
0.3325

 7.6097, 0.3980,
0.3340


 108.3872, 0.3475,
0.3323

 3.8462, 0.4201,
0.3336

138.0301, 0.3447,
0.3321

 1.5879, 0.4570,
0.3314

172.6377, 0.3424,
0.3319

 0.3494, 0.6784,
0.3216

212.5944, 0.3404,

 0.0000, 0.0000,

0.3318

0.0000

258.2845, 0.3386,
0.3316

■ 31.7749, 0.3653,
0.3333

■ 31.7749, 0.3653,
0.3333

■ 26.4610, 0.3947,
0.3351

■ 38.0062, 0.3413,
0.3315

■ 22.0170, 0.4301,
0.3368

■ 45.1906, 0.3220,
0.3299

■ 18.3980, 0.4714,
0.3381

■ 53.3675, 0.3063,
0.3284

■ 15.5529, 0.5168,
0.3387

■ 62.5725, 0.2936,
0.3270

■ 13.4255, 0.5621,
0.3383

■ 72.8397, 0.2832,
0.3257

■ 11.9516, 0.6011,
0.3366

■ 84.2014, 0.2747,
0.3246

■ 11.0552, 0.6276,
0.3340

■ 89.3030, 0.2736,
0.3289

■ 10.8169, 0.6356,
0.3335

Harmonies

Analogous

The Analogous color harmony consists of three colors that are next to each other on the color wheel.



31.7749, 0.3446, 0.3095



31.7749, 0.3653, 0.3333



31.7749, 0.3711, 0.3572

Triad

The Triadic color harmony groups three colors that are evenly spaced from another and form a triangle on the color wheel.



31.7749, 0.3653, 0.3333



31.7749, 0.3078, 0.3720



31.7749, 0.2661, 0.2830

Complementary

The Complementary color scheme is a pair of colors which are on the opposite of each other on the color wheel.



31.7749, 0.3653, 0.3333



43.3613, 0.2752, 0.3247

Split Complementary

Split-complementary colors differ from the complementary color scheme. The scheme consists of three colors, the original color and two neighbors of the complement color.



31.7749, 0.2575, 0.2970



31.7749, 0.3653, 0.3333



31.7749, 0.2808, 0.3491

Square

The Square scheme is like the rectangle color scheme, but the four colors are evenly spaced on the color wheel.



31.7749, 0.3653, 0.3333



31.7749, 0.3371, 0.3814



31.7749, 0.2627, 0.3210



31.7749, 0.2869, 0.2811

Rectangle

The Rectangle color scheme consists of four colors that form a rectangle on the color wheel.



31.7749, 0.3653, 0.3333



31.7749, 0.3657, 0.3703



31.7749, 0.2627, 0.3210



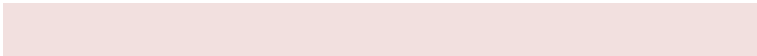
31.7749, 0.2618, 0.2863

Sweetspot

The Sweet Spot groups the original color and five complimentary colors.



31.7764, 0.3653, 0.3333



77.5937, 0.3264, 0.3303



32.5215, 0.3180, 0.2690



16.6477, 0.3292, 0.3305



95.5105, 0.3127, 0.3290



19.5994, 0.3127, 0.3290

Same Dimension

The Same Dimension uses a secret algorithm to generate beautiful new colors.



31.7764, 0.3653, 0.3333



51.1541, 0.3818, 0.3344



39.4842, 0.3575, 0.3650



9.6290, 0.3287, 0.3305



7.4926, 0.6347, 0.3343



0.3264, 0.6150, 0.3499

Inverse Universe

The Inverse Universe completely reimagines the original color for something new.



43.3613, 0.2752, 0.3247



75.5637, 0.2676, 0.3236



34.4316, 0.2721, 0.2901



10.7052, 0.2985, 0.3275



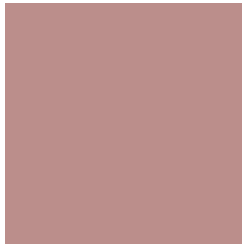
23.7372, 0.2194, 0.3097



0.9608, 0.2207, 0.3146

Previews

White Background



This preview shows how the Yxy color 31.7749, 0.3653, 0.3333 looks on a white background.

Color Contrast Check

Large Text (above 18pt) WCAG AA × Fail

Any Text WCAG AA × Fail

Large Text (above 18pt) WCAG AAA × Fail

Any Text WCAG AAA × Fail

Black Background



This preview shows how the Yxy color 31.7749, 0.3653, 0.3333 looks on a black background.

Color Contrast Check

Large Text (above 18pt) WCAG AA ✓ Pass

Any Text WCAG AA ✓ Pass

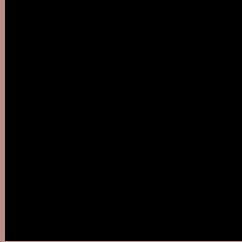
Large Text (above 18pt) WCAG AAA ✓ Pass

Any Text WCAG AAA ✓ Pass

If you want to check with other color combinations, try the [Color Contrast Checker](#).

Yxy 31.7749, 0.3653, 0.3333

Background



This preview shows how black text looks on a background with the Yxy color 31.7749, 0.3653, 0.3333.



This preview shows how white text looks on a background with the Yxy color 31.7749, 0.3653, 0.3333.

Color Blindness Simulation

Color vision deficiency is a very complex topic, and I could not describe the different causes any better than Wikipedia does, so if you want to learn more, you should check out their [article about color blindness](#).

Dichromacy



Original Color

31.7749, 0.3653, 0.3333

Protanopia

32.0959, 0.3253, 0.3412

Deuteranopia

31.8990, 0.3492, 0.3437



Tritanopia

31.6819, 0.3539, 0.3140

Trichromacy



Original Color

31.7749, 0.3653, 0.3333

Protanomaly

31.9131, 0.3396, 0.3379

Deuteranomaly

31.8577, 0.3553, 0.3406

Tritanomaly

31.8477, 0.3580, 0.3209

Monochromacy



Original Color

31.7749, 0.3653, 0.3333

Achromatopsia

32.7778, 0.3127, 0.3290

Achromatomaly

32.1981, 0.3312, 0.3305

CSS Examples

Text

The CSS property to change the color of the text to Yxy 31.7749, 0.3653, 0.3333 is called "color". The color property can be set on classes, ids or directly on the HTML element.

This example shows how text in the color `rgb(187, 142, 139)` looks like.

```
.text, #text, p{  
    color:rgb(187, 142, 139)  
}
```

If you want to add a text shadow in that color use the text-shadow property, you can generate a text shadow directly with our [CSS Text Shadow Generator](#).

Here you see how black text with a 4 pixel rgb(187, 142, 139) colored shadow looks like.

```
.shadow{ text-shadow: 4px 4px 2px rgb(187, 142, 139) }
```

Border

The CSS property to change the border of an element to Yxy 31.7749, 0.3653, 0.3333 is called "border". The border property can be set on classes, ids or directly on the HTML element.

This example shows the color as border, it can be applied via the CSS property "border" or "border-color".

```
.border, #border, table{ border:4px solid rgb(187, 142, 139) }
```

If only the border color should be changed use the property `border-color`.

```
.border{ border-color:rgb(187, 142, 139) }
```

If you want to add a box shadow in that color use:

Here you see how a box with a 4 pixel `rgb(187, 142, 139)` colored shadow looks like.

```
.boxshadow{ -moz-box-shadow:4px 4px 4px  
4px rgb(187, 142, 139); -webkit-box-  
shadow:4px 4px 4px 4px rgb(187, 142, 139);  
box-shadow:4px 4px 4px 4px rgb(187, 142,  
139) }
```


Background

The CSS property to change the background color of an element to Yxy 31.7749, 0.3653, 0.3333 is called "background". The background property can be set on classes, ids or directly on the HTML element.

```
.background, #background, body{  
background: rgb(187, 142, 139) }
```

If only the background color should be changed can be used:

```
.background{ background-color: rgb(187,  
142, 139) }
```

This example shows the color as background, it is applied via the CSS property "background".

To optimize and compress your CSS code, you can use our [online CSS compressor and optimizer](#) based on csstidy. If you want to create a linear or radial gradient as background or border, check our [CSS Gradient Generator](#).

Hey! You found this booklet interesting? Support Converting Colors with the new Membership Option!

The pro membership hides all ads, plus gives you double the colors in the color bucket, and more awesome pro features!

[Learn more, Memberships starting at \\$2.50/m!](#)

**Follow me
on Twitter!**

@ConvertingColor