

Converting Colors

Yxy(31.9808, 0.3749, 0.3654)

Have a look what the booklet for
Yxy(31.9808, 0.3749, 0.3654)
contains.

Yxy(31.9759, 0.3741, 0.3650)	3
Conversions	4
Details	6
Harmonies	12
Previews	24
Color Blindness Simulation	27
CSS Examples	30

Color

Yxy(31.9759, 0.3741, 0.3650)

Conversions

Conversions Part 1

Format	Color
Hex	B4937A
RGB	180, 147, 122
RGB Percent	71%, 58%, 48%
CMY	0.2940, 0.4235, 0.5216
CMYK	0.00, 0.18, 0.32, 0.29
HSL	26°, 28%, 59%
HSV	26°, 32%, 71%
XYZ	32.7731, 31.9759, 22.8562
YIQ	154.0170, 27.6930, -0.7790

Conversions

Conversions Part 2

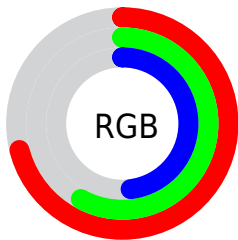
Format	Color
R _Y B	180, 166, 122
Decimal	11834234
CIE Lab	63.32, 8.71, 17.90
CIE LCh	63, 19.906, 64.067
Yxy	31.9759, 0.3741, 0.3650
Android (android.graphics.Color)	4290024314 (0xFFB4937A)
YUV	154.0170, -15.7844, 22.7871
Hunter-Lab	56.5472, 4.4957, 15.6183

Details

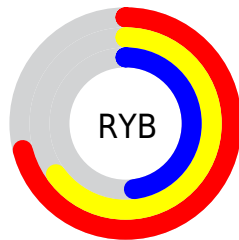
The Yxy color **31.9759, 0.3741, 0.3650** is a light color, and the websafe version is hex **CC9999**. A complement of this color would be **30.8859, 0.2627, 0.2899**, and the grayscale version is **32.3857, 0.3127, 0.3290**.

A 20% lighter version of the original color is **62.8730, 0.3616, 0.3577**, and **13.2824, 0.3952, 0.3752** is the 20% darker color. If you saturate the color by 10%, you get **28.5254, 0.3991, 0.3765**, and if you desaturate by 10%, it is **35.7959, 0.3520, 0.3534**.

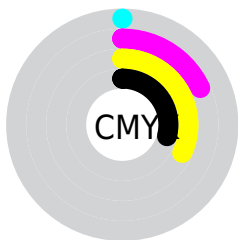
Distribution



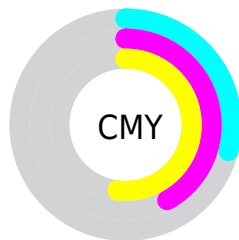
- Red (71%)
- Green (58%)
- Blue (48%)



- Red (71%)
- Yellow (65%)
- Blue (48%)



- Cyan (0%)
- Magenta (18%)
- Yellow (32%)
- Black (29%)




- Cyan (29%)
- Magenta (42%)
- Yellow (52%)

Brightness & Saturation Gradients


These gradients show how the Yxy color 31.9759, 0.3741, 0.3650 changes by changing the brightness by 10 percent. The first figure shows a shift by +10% for each color and the second figure -10%.

Similar to the brightness gradients but the following saturation gradients show a change of the Yxy color 31.9759, 0.3741, 0.3650 by changing the saturation by 10% instead.


 31.9759, 0.3741,
0.3650


 31.9759, 0.3741,
0.3650


311.0095, 0.3413,
0.3466

 21.3431, 0.3830,
0.3697


 62.7733, 0.3617,
0.3582

 13.3750, 0.3947,
0.3756


 83.7067, 0.3572,
0.3557

 7.6873, 0.4111,
0.3835


 108.8424, 0.3534,
0.3536

 3.8955, 0.4351,
0.3939

138.5648, 0.3503,
0.3518

 1.6153, 0.4877,
0.4201

173.2583, 0.3475,
0.3502

 0.3679, 0.6045,
0.3955

213.3073, 0.3452,

 0.0000, 0.0000,

0.3488

0.0000

259.0963, 0.3431,
0.3476

■ 31.9759, 0.3741,
0.3650

■ 31.9759, 0.3741,
0.3650

■ 28.5254, 0.3991,
0.3765

■ 35.7959, 0.3520,
0.3534

■ 25.4282, 0.4267,
0.3871

■ 39.9923, 0.3328,
0.3421

■ 22.6728, 0.4564,
0.3958

■ 44.5775, 0.3161,
0.3313

■ 20.2458, 0.4869,
0.4014

■ 49.5616, 0.3017,
0.3213

■ 18.1323, 0.5164,
0.4027

■ 54.9546, 0.2893,
0.3120

■ 16.3158, 0.5426,
0.3989

■ 60.7660, 0.2786,
0.3035

■ 15.0915, 0.5606,
0.3931

■ 67.0051, 0.2694,
0.2957

■ 72.9505, 0.2669,
0.3001

■ 78.7889, 0.2682,
0.3116

Harmonies

Analogous

The Analogous color harmony consists of three colors that are next to each other on the color wheel.



31.9759, 0.3726, 0.3403



31.9759, 0.3741, 0.3650



31.9759, 0.3585, 0.3818

Triad

The Triadic color harmony groups three colors that are evenly spaced from another and form a triangle on the color wheel.



31.9759, 0.3741, 0.3650



31.9759, 0.2723, 0.3428



31.9759, 0.2924, 0.2794

Complementary

The Complementary color scheme is a pair of colors which are on the opposite of each other on the color wheel.



31.9759, 0.3741, 0.3650



30.8859, 0.2627, 0.2899

Split Complementary

Split-complementary colors differ from the complementary color scheme. The scheme consists of three colors, the original color and two neighbors of the complement color.



31.9759, 0.2675, 0.2780



31.9759, 0.3741, 0.3650



31.9759, 0.2563, 0.3128

Square

The Square scheme is like the rectangle color scheme, but the four colors are evenly spaced on the color wheel.



31.9759, 0.3741, 0.3650



31.9759, 0.2993, 0.3700



31.9759, 0.2547, 0.2895



31.9759, 0.3241, 0.2926

Rectangle

The Rectangle color scheme consists of four colors that form a rectangle on the color wheel.



31.9759, 0.3741, 0.3650



31.9759, 0.3409, 0.3855



31.9759, 0.2547, 0.2895



31.9759, 0.2830, 0.2775

Sweetspot

The Sweet Spot groups the original color and five complimentary colors.



31.9774, 0.3741, 0.3650



74.1473, 0.3291, 0.3398



26.0202, 0.3434, 0.2812



15.7853, 0.3316, 0.3413



91.1408, 0.3127, 0.3290



17.8868, 0.3127, 0.3290

Same Dimension

The Same Dimension uses a secret algorithm to generate beautiful new colors.



31.9774, 0.3741, 0.3650



53.2498, 0.3924, 0.3736



41.8451, 0.3624, 0.4021



9.0873, 0.3277, 0.3388



10.6582, 0.5585, 0.3947



0.4521, 0.5103, 0.4330

Inverse Universe

The Inverse Universe completely reimagines the original color for something new.



30.8859, 0.2627, 0.2899



50.9378, 0.2512, 0.2791



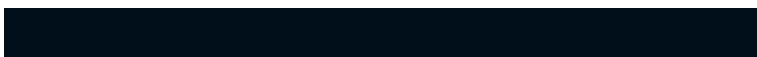
22.5698, 0.2571, 0.2435



9.0061, 0.2985, 0.3190



9.1309, 0.1844, 0.1837



0.4005, 0.1968, 0.2285

Previews

White Background



This preview shows how the Yxy color 31.9759, 0.3741, 0.3650 looks on a white background.

Color Contrast Check

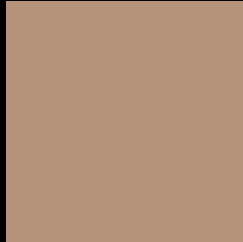
Large Text (above 18pt) WCAG AA × Fail

Any Text WCAG AA × Fail

Large Text (above 18pt) WCAG AAA × Fail

Any Text WCAG AAA × Fail

Black Background



This preview shows how the Yxy color 31.9759, 0.3741, 0.3650 looks on a black background.

Color Contrast Check

Large Text (above 18pt) WCAG AA ✓ Pass

Any Text WCAG AA ✓ Pass

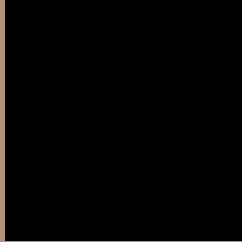
Large Text (above 18pt) WCAG AAA ✓ Pass

Any Text WCAG AAA ✓ Pass

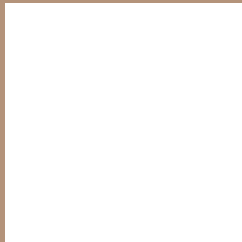
If you want to check with other color combinations, try the [Color Contrast Checker](#).

Yxy 31.9759, 0.3741, 0.3650

Background



This preview shows how black text looks on a background with the Yxy color 31.9759, 0.3741, 0.3650.



This preview shows how white text looks on a background with the Yxy color 31.9759, 0.3741, 0.3650.

Color Blindness Simulation

Color vision deficiency is a very complex topic, and I could not describe the different causes any better than Wikipedia does, so if you want to learn more, you should check out their [article about color blindness](#).

Dichromacy



Original Color

31.9759, 0.3741, 0.3650

Protanopia

32.0497, 0.3501, 0.3716

Deuteranopia

31.8563, 0.3730, 0.3652



Tritanopia

32.0453, 0.3445, 0.3138

Trichromacy



Original Color

31.9759, 0.3741, 0.3650

Protanomaly

32.0235, 0.3583, 0.3693

Deuteranomaly

31.8563, 0.3730, 0.3652

Tritanomaly

31.8446, 0.3560, 0.3320

Monochromacy



Original Color

31.9759, 0.3741, 0.3650

Achromatopsia

32.3143, 0.3127, 0.3290

Achromatomaly

31.8727, 0.3338, 0.3426

CSS Examples

Text

The CSS property to change the color of the text to Yxy 31.9759, 0.3741, 0.3650 is called "color". The color property can be set on classes, ids or directly on the HTML element.

This example shows how text in the color `rgb(180, 147, 122)` looks like.

```
.text, #text, p{  
    color:rgb(180, 147, 122)  
}
```

If you want to add a text shadow in that color use the text-shadow property, you can generate a text shadow directly with our [CSS Text Shadow Generator](#).

Here you see how black text with a 4 pixel rgb(180, 147, 122) colored shadow looks like.

```
.shadow{ text-shadow: 4px 4px 2px rgb(180, 147, 122) }
```

Border

The CSS property to change the border of an element to Yxy 31.9759, 0.3741, 0.3650 is called "border". The border property can be set on classes, ids or directly on the HTML element.

This example shows the color as border, it can be applied via the CSS property "border" or "border-color".

```
.border, #border, table{ border:4px solid rgb(180, 147, 122) }
```

If only the border color should be changed use the property `border-color`.

```
.border{ border-color:rgb(180, 147, 122) }
```

If you want to add a box shadow in that color use:

Here you see how a box with a 4 pixel `rgb(180, 147, 122)` colored shadow looks like.

```
.boxshadow{ -moz-box-shadow:4px 4px 4px  
4px rgb(180, 147, 122); -webkit-box-  
shadow:4px 4px 4px 4px rgb(180, 147, 122);  
box-shadow:4px 4px 4px 4px rgb(180, 147,  
122) }
```


Background

The CSS property to change the background color of an element to Yxy 31.9759, 0.3741, 0.3650 is called "background". The background property can be set on classes, ids or directly on the HTML element.

```
.background, #background, body{  
background: rgb(180, 147, 122) }
```

If only the background color should be changed can be used:

```
.background{ background-color: rgb(180,  
147, 122) }
```

This example shows the color as background, it is applied via the CSS property "background".

To optimize and compress your CSS code, you can use our [online CSS compressor and optimizer](#) based on csstidy. If you want to create a linear or radial gradient as background or border, check our [CSS Gradient Generator](#).

Hey! You found this booklet interesting? Support Converting Colors with the new Membership Option!

The pro membership hides all ads, plus gives you double the colors in the color bucket, and more awesome pro features!

[Learn more, Memberships starting at \\$2.50/m!](#)

**Follow me
on Twitter!**

@ConvertingColor