

Converting Colors

$Y_{xy}(32.2892, 0.3736, 0.3664)$

Have a look what the booklet for
Yxy(32.2892, 0.3736, 0.3664)
contains.

Yxy(32.2882, 0.3736, 0.3664)	3
Conversions	4
Details	6
Harmonies	12
Previews	24
Color Blindness Simulation	27
CSS Examples	30

Color

Yxy(32.2882, 0.3736, 0.3664)

Conversions

Conversions Part 1

Format	Color
Hex	B4947A
RGB	180, 148, 122
RGB Percent	71%, 58%, 48%
CMY	0.2942, 0.4196, 0.5215
CMYK	0.00, 0.18, 0.32, 0.29
HSL	27°, 28%, 59%
HSV	27°, 32%, 71%
XYZ	32.9227, 32.2882, 22.9119
YIQ	154.6040, 27.4180, -1.3020

Conversions

Conversions Part 2

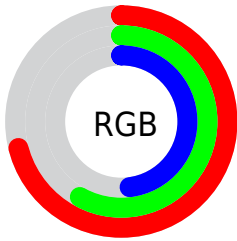
Format	Color
RYB	180, 169, 122
Decimal	11834490
CIELab	63.58, 8.13, 18.25
CIElCh	64, 19.977, 65.991
Yxy	32.2882, 0.3736, 0.3664
Android (android.graphics.Color)	4290024570 (0xFFB4947A)
YUV	154.6040, -16.0738, 22.2723
Hunter-Lab	56.8227, 3.9819, 15.8691

Details

The Yxy color $32.2882, 0.3736, 0.3664$ is a light color, and the websafe version is hex `CC9999`. A complement of this color would be $30.5384, 0.2625, 0.2882$, and the grayscale version is $32.6579, 0.3127, 0.3290$.

A 20% lighter version of the original color is $63.3407, 0.3613, 0.3588$, and $13.4660, 0.3944, 0.3771$ is the 20% darker color. If you saturate the color by 10%, you get $28.9021, 0.3982, 0.3783$, and if you desaturate by 10%, it is $36.0271, 0.3518, 0.3543$.

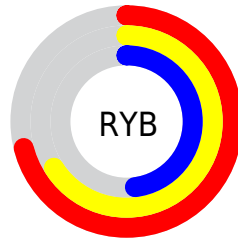
Distribution



Red (71%)

Green (58%)

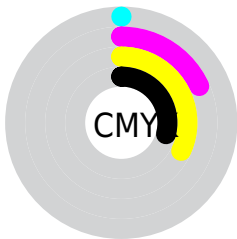
Blue (48%)



Red (71%)

Yellow (66%)

Blue (48%)

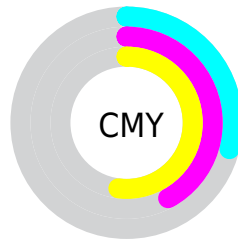


Cyan (0%)

Magenta (18%)

Yellow (32%)

Black (29%)



Cyan (29%)


Magenta (42%)

Yellow (52%)

Brightness & Saturation Gradients


These gradients show how the Yxy color 32.2882, 0.3736, 0.3664 changes by changing the brightness by 10 percent. The first figure shows a shift by +10% for each color and the second figure -10%.


Similar to the brightness gradients but the following saturation gradients show a change of the Yxy color 32.2882, 0.3736, 0.3664 by changing the saturation by 10% instead.

 32.2882, 0.3736,
0.3664


 32.2882, 0.3736,
0.3664


312.4300, 0.3412,
0.3472


 21.5817, 0.3823,
0.3713


 63.2626, 0.3613,
0.3594

 13.5499, 0.3939,
0.3775


 84.2994, 0.3569,
0.3567

 7.8083, 0.4100,
0.3857


 109.5483, 0.3532,
0.3545

 3.9725, 0.4335,
0.3967

139.3939, 0.3500,
0.3526

 1.6582, 0.4844,
0.4234

174.2204, 0.3473,
0.3510

 0.3964, 0.5920,
0.4080

214.4124, 0.3450,

 0.0000, 0.0000,

0.3496

0.0000

260.3541, 0.3430,
0.3483

■ 32.2882, 0.3736,
0.3664

■ 32.2882, 0.3736,
0.3664

■ 28.9021, 0.3982,
0.3783

■ 36.0271, 0.3518,
0.3543

■ 25.8529, 0.4253,
0.3894

■ 40.1248, 0.3327,
0.3426

■ 23.1303, 0.4543,
0.3985

■ 44.5930, 0.3161,
0.3314

■ 20.7213, 0.4839,
0.4045

■ 49.4414, 0.3017,
0.3209

■ 18.6121, 0.5125,
0.4062

■ 54.6794, 0.2893,
0.3113

■ 16.7870, 0.5379,
0.4027

■ 60.3158, 0.2785,
0.3024

■ 15.5448, 0.5555,
0.3972

■ 66.3594, 0.2692,
0.2943

■ 72.0899, 0.2667,
0.2983

■ 77.6908, 0.2679,
0.3095

Harmonies

Analogous

The Analogous color harmony consists of three colors that are next to each other on the color wheel.



32.2882, 0.3732, 0.3420



32.2882, 0.3736, 0.3664



32.2882, 0.3570, 0.3825

Triad

The Triadic color harmony groups three colors that are evenly spaced from another and form a triangle on the color wheel.



32.2882, 0.3736, 0.3664



32.2882, 0.2709, 0.3408



32.2882, 0.2943, 0.2799

Complementary

The Complementary color scheme is a pair of colors which are on the opposite of each other on the color wheel.



32.2882, 0.3736, 0.3664



30.5384, 0.2625, 0.2882

Split Complementary

Split-complementary colors differ from the complementary color scheme. The scheme consists of three colors, the original color and two neighbors of the complement color.



32.2882, 0.2687, 0.2777



32.2882, 0.3736, 0.3664



32.2882, 0.2558, 0.3110

Square

The Square scheme is like the rectangle color scheme, but the four colors are evenly spaced on the color wheel.



32.2882, 0.3736, 0.3664



32.2882, 0.2973, 0.3686



32.2882, 0.2550, 0.2883



32.2882, 0.3262, 0.2937

Rectangle

The Rectangle color scheme consists of four colors that form a rectangle on the color wheel.



32.2882, 0.3736, 0.3664



32.2882, 0.3390, 0.3854



32.2882, 0.2550, 0.2883



32.2882, 0.2848, 0.2778

Sweetspot

The Sweet Spot groups the original color and five complimentary colors.



32.2897, 0.3736, 0.3664



74.3673, 0.3291, 0.3402



25.9846, 0.3445, 0.2826



15.8387, 0.3315, 0.3418



91.1408, 0.3127, 0.3290



17.8868, 0.3127, 0.3290

Same Dimension

The Same Dimension uses a secret algorithm to generate beautiful new colors.



32.2897, 0.3736, 0.3664



53.9197, 0.3917, 0.3753



42.2040, 0.3620, 0.4033



9.1119, 0.3276, 0.3392



10.9818, 0.5534, 0.3988



0.4626, 0.5069, 0.4357

Inverse Universe

The Inverse Universe completely reimagines the original color for something new.



30.5384, 0.2625, 0.2882



50.2148, 0.2509, 0.2770



22.3224, 0.2570, 0.2419



8.9811, 0.2985, 0.3185



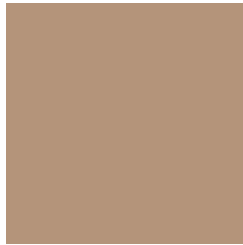
8.6999, 0.1827, 0.1776



0.3882, 0.1956, 0.2241

Previews

White Background



This preview shows how the Yxy color 32.2882, 0.3736, 0.3664 looks on a white background.

Color Contrast Check

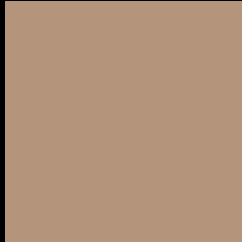
Large Text (above 18pt) WCAG AA × Fail

Any Text WCAG AA × Fail

Large Text (above 18pt) WCAG AAA × Fail

Any Text WCAG AAA × Fail

Black Background



This preview shows how the Yxy color 32.2882, 0.3736, 0.3664 looks on a black background.

Color Contrast Check

Large Text (above 18pt) WCAG AA ✓ Pass

Any Text WCAG AA ✓ Pass

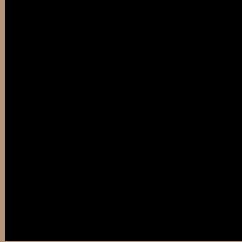
Large Text (above 18pt) WCAG AAA ✓ Pass

Any Text WCAG AAA ✓ Pass

If you want to check with other color combinations, try the [Color Contrast Checker](#).

Yxy 32.2882, 0.3736, 0.3664

Background



This preview shows how black text looks on a background with the Yxy color 32.2882, 0.3736, 0.3664.



This preview shows how white text looks on a background with the Yxy color 32.2882, 0.3736, 0.3664.

Color Blindness Simulation

Color vision deficiency is a very complex topic, and I could not describe the different causes any better than Wikipedia does, so if you want to learn more, you should check out their [article about color blindness](#).

Dichromacy



Original Color

32.2882, 0.3736, 0.3664

Protanopia

32.3784, 0.3498, 0.3731

Deuteranopia

32.2882, 0.3736, 0.3664



Tritanopia

32.2018, 0.3445, 0.3124

Trichromacy



Original Color

32.2882, 0.3736, 0.3664

Protanomaly

32.3467, 0.3580, 0.3708

Deuteranomaly

32.2882, 0.3736, 0.3664

Tritanomaly

32.3012, 0.3557, 0.3319

Monochromacy



Original Color

32.2882, 0.3736, 0.3664

Achromatopsia

32.7778, 0.3127, 0.3290

Achromatomaly

32.3322, 0.3337, 0.3425

CSS Examples

Text

The CSS property to change the color of the text to Yxy 32.2882, 0.3736, 0.3664 is called "color". The color property can be set on classes, ids or directly on the HTML element.

This example shows how text in the color `rgb(180, 148, 122)` looks like.

```
.text, #text, p{  
    color:rgb(180, 148, 122)  
}
```

If you want to add a text shadow in that color use the text-shadow property, you can generate a text shadow directly with our [CSS Text Shadow Generator](#).

Here you see how black text with a 4 pixel rgb(180, 148, 122) colored shadow looks like.

```
.shadow{ text-shadow: 4px 4px 2px rgb(180, 148, 122) }
```

Border

The CSS property to change the border of an element to Yxy 32.2882, 0.3736, 0.3664 is called "border". The border property can be set on classes, ids or directly on the HTML element.

This example shows the color as border, it can be applied via the CSS property "border" or "border-color".

```
.border, #border, table{ border:4px solid rgb(180, 148, 122) }
```

If only the border color should be changed use the property `border-color`.

```
.border{ border-color:rgb(180, 148, 122) }
```

If you want to add a box shadow in that color use:

Here you see how a box with a 4 pixel `rgb(180, 148, 122)` colored shadow looks like.

```
.boxshadow{ -moz-box-shadow:4px 4px 4px  
4px rgb(180, 148, 122); -webkit-box-  
shadow:4px 4px 4px 4px rgb(180, 148, 122);  
box-shadow:4px 4px 4px 4px rgb(180, 148,  
122) }
```


Background

The CSS property to change the background color of an element to Yxy 32.2882, 0.3736, 0.3664 is called "background". The background property can be set on classes, ids or directly on the HTML element.

```
.background, #background, body{  
background: rgb(180, 148, 122) }
```

If only the background color should be changed can be used:

```
.background{ background-color: rgb(180,  
148, 122) }
```

This example shows the color as background, it is applied via the CSS property "background".

To optimize and compress your CSS code, you can use our [online CSS compressor and optimizer](#) based on csstidy. If you want to create a linear or radial gradient as background or border, check our [CSS Gradient Generator](#).

Hey! You found this booklet interesting? Support Converting Colors with the new Membership Option!

The pro membership hides all ads, plus gives you double the colors in the color bucket, and more awesome pro features!

[Learn more, Memberships starting at \\$2.50/m!](#)

**Follow me
on Twitter!**

@ConvertingColor