

Converting Colors

$Y_{xy}(32.3179, 0.3736, 0.3335)$

Have a look what the booklet for
Yxy(32.3179, 0.3736, 0.3335)
contains.

Yxy(32.2222, 0.3734, 0.3333)	3
Conversions	4
Details	6
Harmonies	12
Previews	24
Color Blindness Simulation	27
CSS Examples	30

Color

Yxy(32.2222, 0.3734, 0.3333)

Conversions

Conversions Part 1

Format	Color
Hex	C18D8A
RGB	193, 141, 138
RGB Percent	76%, 55%, 54%
CMY	0.2432, 0.4470, 0.4589
CMYK	0.00, 0.27, 0.28, 0.24
HSL	3°, 31%, 65%
HSV	3°, 28%, 76%
XYZ	36.0989, 32.2222, 28.3551
YIQ	156.2060, 31.9550, 10.0910

Conversions

Conversions Part 2

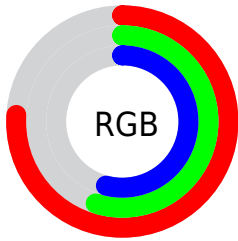
Format	Color
R _Y B	193, 141, 138
Decimal	12684682
CIE Lab	63.53, 19.31, 9.40
CIE LCh	64, 21.474, 25.946
Yxy	32.2222, 0.3734, 0.3333
Android (android.graphics.Color)	4290874762 (0xFFC18D8A)
YUV	156.2060, -8.9756, 32.2683
Hunter-Lab	56.7646, 14.1774, 10.1186

Details

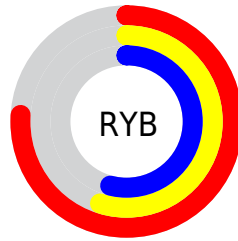
The Yxy color **32.2222, 0.3734, 0.3333** is a light color, and the websafe version is hex **CC9999**. A complement of this color would be **46.0526, 0.2714, 0.3247**, and the grayscale version is **33.3726, 0.3127, 0.3290**.

A 20% lighter version of the original color is **63.1158, 0.3610, 0.3334**, and **13.4202, 0.3945, 0.3330** is the 20% darker color. If you saturate the color by 10%, you get **26.7712, 0.4047, 0.3349**, and if you desaturate by 10%, it is **38.6607, 0.3478, 0.3317**.

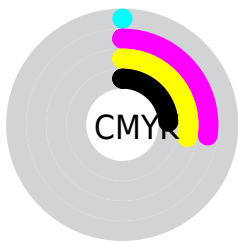
Distribution



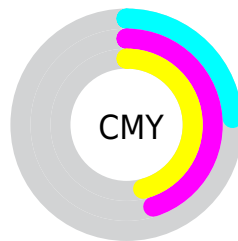
- Red (76%)
- Green (55%)
- Blue (54%)



- Red (76%)
- Yellow (55%)
- Blue (54%)



- Cyan (0%)
- Magenta (27%)
- Yellow (28%)
- Black (24%)





- Cyan (24%)
- Magenta (45%)
- Yellow (46%)

Brightness & Saturation Gradients


These gradients show how the Yxy color 32.2222, 0.3734, 0.3333 changes by changing the brightness by 10 percent. The first figure shows a shift by +10% for each color and the second figure -10%.


Similar to the brightness gradients but the following saturation gradients show a change of the Yxy color 32.2222, 0.3734, 0.3333 by changing the saturation by 10% instead.


 32.2222, 0.3734,
0.3333


 32.2222, 0.3734,
0.3333


312.1302, 0.3409,
0.3317

 21.5313, 0.3823,
0.3335


 63.1593, 0.3610,
0.3329

 13.5129, 0.3941,
0.3336


 84.1742, 0.3566,
0.3326

 7.7827, 0.4108,
0.3333


 109.3993, 0.3529,
0.3324

 3.9562, 0.4359,
0.3323

139.2188, 0.3497,
0.3323

 1.6491, 0.4773,
0.3287

174.0173, 0.3470,
0.3321

 0.3904, 0.6833,
0.3167

214.1791, 0.3447,

 0.0000, 0.0000,

0.3319

0.0000

260.0886, 0.3427,
0.3318

■ 32.2222, 0.3734,
0.3333

■ 32.2222, 0.3734,
0.3333

■ 26.7712, 0.4047,
0.3349

■ 38.6607, 0.3478,
0.3317

■ 22.2546, 0.4422,
0.3363

■ 46.1274, 0.3271,
0.3302

■ 18.6214, 0.4853,
0.3373

■ 54.6662, 0.3104,
0.3288

■ 15.8136, 0.5316,
0.3376

■ 64.3169, 0.2969,
0.3275

■ 13.7665, 0.5759,
0.3369

■ 75.1177, 0.2859,
0.3264

■ 12.4056, 0.6116,
0.3351

■ 87.1047, 0.2770,
0.3253

■ 11.6384, 0.6338,
0.3330

■ 90.0742, 0.2768,
0.3289

■ 11.5655, 0.6363,
0.3330

Harmonies

Analogous

The Analogous color harmony consists of three colors that are next to each other on the color wheel.



32.2222, 0.3491, 0.3062



32.2222, 0.3734, 0.3333



32.2222, 0.3803, 0.3608

Triad

The Triadic color harmony groups three colors that are evenly spaced from another and form a triangle on the color wheel.



32.2222, 0.3734, 0.3333



32.2222, 0.3072, 0.3793



32.2222, 0.2590, 0.2762

Complementary

The Complementary color scheme is a pair of colors which are on the opposite of each other on the color wheel.



32.2222, 0.3734, 0.3333



46.0526, 0.2714, 0.3247

Split Complementary

Split-complementary colors differ from the complementary color scheme. The scheme consists of three colors, the original color and two neighbors of the complement color.



32.2222, 0.2494, 0.2921



32.2222, 0.3734, 0.3333



32.2222, 0.2761, 0.3526

Square

The Square scheme is like the rectangle color scheme, but the four colors are evenly spaced on the color wheel.



32.2222, 0.3734, 0.3333



32.2222, 0.3409, 0.3899



32.2222, 0.2554, 0.3198



32.2222, 0.2826, 0.2742

Rectangle

The Rectangle color scheme consists of four colors that form a rectangle on the color wheel.



32.2222, 0.3734, 0.3333



32.2222, 0.3741, 0.3761



32.2222, 0.2554, 0.3198



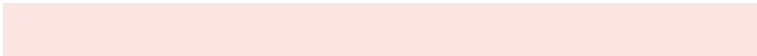
32.2222, 0.2541, 0.2800

Sweetspot

The Sweet Spot groups the original color and five complimentary colors.



32.2237, 0.3734, 0.3333



81.7192, 0.3283, 0.3303



33.2341, 0.3187, 0.2622



17.0888, 0.3311, 0.3305



97.7402, 0.3127, 0.3290



20.4902, 0.3127, 0.3290

Same Dimension

The Same Dimension uses a secret algorithm to generate beautiful new colors.



32.2237, 0.3734, 0.3333



51.6275, 0.3916, 0.3343



41.2587, 0.3635, 0.3692



10.1650, 0.3288, 0.3303



7.7332, 0.6354, 0.3337



0.3655, 0.6187, 0.3469

Inverse Universe

The Inverse Universe completely reimagines the original color for something new.



46.0526, 0.2714, 0.3247



80.3216, 0.2637, 0.3236



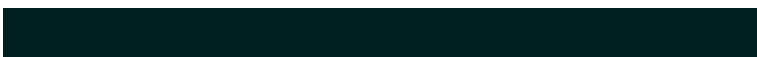
35.3497, 0.2673, 0.2850



11.3301, 0.2984, 0.3277



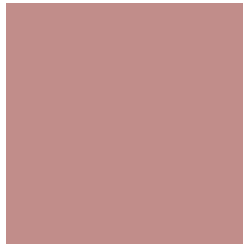
24.9483, 0.2200, 0.3119



1.1075, 0.2211, 0.3159

Previews

White Background



This preview shows how the Yxy color 32.2222, 0.3734, 0.3333 looks on a white background.

Color Contrast Check

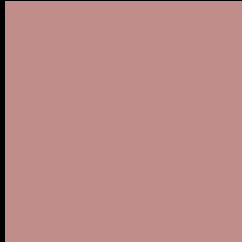
Large Text (above 18pt) WCAG AA × Fail

Any Text WCAG AA × Fail

Large Text (above 18pt) WCAG AAA × Fail

Any Text WCAG AAA × Fail

Black Background



This preview shows how the Yxy color 32.2222, 0.3734, 0.3333 looks on a black background.

Color Contrast Check

Large Text (above 18pt) WCAG AA ✓ Pass

Any Text WCAG AA ✓ Pass

Large Text (above 18pt) WCAG AAA ✓ Pass

Any Text WCAG AAA ✓ Pass

If you want to check with other color combinations, try the [Color Contrast Checker](#).

Yxy 32.2222, 0.3734, 0.3333

Background



This preview shows how black text looks on a background with the Yxy color 32.2222, 0.3734, 0.3333.



This preview shows how white text looks on a background with the Yxy color 32.2222, 0.3734, 0.3333.

Color Blindness Simulation

Color vision deficiency is a very complex topic, and I could not describe the different causes any better than Wikipedia does, so if you want to learn more, you should check out their [article about color blindness](#).

Dichromacy



Original Color

32.2222, 0.3734, 0.3333

Protanopia

32.5265, 0.3262, 0.3427

Deuteranopia

32.4150, 0.3522, 0.3465



Tritanopia

32.1366, 0.3618, 0.3144

Trichromacy



Original Color

32.2222, 0.3734, 0.3333

Protanomaly

32.1058, 0.3427, 0.3394

Deuteranomaly

32.3090, 0.3607, 0.3419

Tritanomaly

32.3008, 0.3659, 0.3211

Monochromacy



Original Color

32.2222, 0.3734, 0.3333

Achromatopsia

33.2452, 0.3127, 0.3290

Achromatomaly

32.7382, 0.3332, 0.3320

CSS Examples

Text

The CSS property to change the color of the text to Yxy 32.2222, 0.3734, 0.3333 is called "color". The color property can be set on classes, ids or directly on the HTML element.

This example shows how text in the color `rgb(193, 141, 138)` looks like.

```
.text, #text, p{  
    color:rgb(193, 141, 138)  
}
```

If you want to add a text shadow in that color use the text-shadow property, you can generate a text shadow directly with our [CSS Text Shadow Generator](#).

Here you see how black text with a 4 pixel rgb(193, 141, 138) colored shadow looks like.

```
.shadow{ text-shadow: 4px 4px 2px rgb(193, 141, 138) }
```

Border

The CSS property to change the border of an element to Yxy 32.2222, 0.3734, 0.3333 is called "border". The border property can be set on classes, ids or directly on the HTML element.

This example shows the color as border, it can be applied via the CSS property "border" or "border-color".

```
.border, #border, table{ border:4px solid rgb(193, 141, 138) }
```

If only the border color should be changed use the property `border-color`.

```
.border{ border-color:rgb(193, 141, 138) }
```

If you want to add a box shadow in that color use:

Here you see how a box with a 4 pixel `rgb(193, 141, 138)` colored shadow looks like.

```
.boxshadow{ -moz-box-shadow:4px 4px 4px  
4px rgb(193, 141, 138); -webkit-box-  
shadow:4px 4px 4px 4px rgb(193, 141, 138);  
box-shadow:4px 4px 4px 4px rgb(193, 141,  
138) }
```


Background

The CSS property to change the background color of an element to Yxy 32.2222, 0.3734, 0.3333 is called "background". The background property can be set on classes, ids or directly on the HTML element.

```
.background, #background, body{  
background: rgb(193, 141, 138) }
```

If only the background color should be changed can be used:

```
.background{ background-color: rgb(193,  
141, 138) }
```

This example shows the color as background, it is applied via the CSS property "background".

To optimize and compress your CSS code, you can use our [online CSS compressor and optimizer](#) based on csstidy. If you want to create a linear or radial gradient as background or border, check our [CSS Gradient Generator](#).

Hey! You found this booklet interesting? Support Converting Colors with the new Membership Option!

The pro membership hides all ads, plus gives you double the colors in the color bucket, and more awesome pro features!

[Learn more, Memberships starting at \\$2.50/m!](#)

**Follow me
on Twitter!**

@ConvertingColor