

Converting Colors

$Yxy(32.9117, 0.3656, 0.3617)$

Have a look what the booklet for
Yxy(32.9117, 0.3656, 0.3617)
contains.

Yxy(32.9287, 0.3665, 0.3621)	3
<i>Conversions</i>	4
<i>Details</i>	6
<i>Harmonies</i>	12
<i>Previews</i>	24
<i>Color Blindness Simulation</i>	27
<i>CSS Examples</i>	30

Color

Yxy(32.9287, 0.3665, 0.3621)

Conversions

Conversions Part 1

Format	Color
Hex	B3967F
RGB	179, 150, 127
RGB Percent	70%, 59%, 50%
CMY	0.2980, 0.4118, 0.5019
CMYK	0.00, 0.16, 0.29, 0.30
HSL	27°, 25%, 60%
HSV	27°, 29%, 70%
XYZ	33.3288, 32.9287, 24.6806
YIQ	156.0490, 24.6670, -1.0050

Conversions

Conversions Part 2

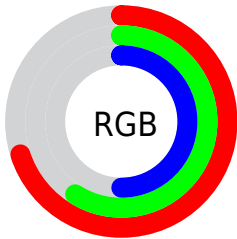
Format	Color
RYB	179, 168, 127
Decimal	11769471
CIELab	64.10, 7.31, 16.16
CIELCh	64, 17.742, 65.658
Yxy	32.9287, 0.3665, 0.3621
Android (android.graphics.Color)	4289959551 (0xFFB3967F)
YUV	156.0490, -14.3212, 20.1280
Hunter-Lab	57.3835, 3.2531, 14.6679

Details

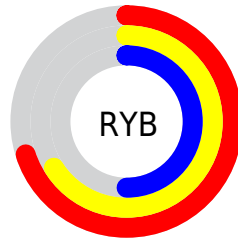
The Yxy color **32.9287, 0.3665, 0.3621** is a light color, and the websafe version is hex **CC9999**. A complement of this color would be **31.5488, 0.2676, 0.2933**, and the grayscale version is **33.3268, 0.3127, 0.3290**.

A 20% lighter version of the original color is **64.1432, 0.3552, 0.3555**, and **13.8337, 0.3837, 0.3713** is the 20% darker color. If you saturate the color by 10%, you get **29.4520, 0.3903, 0.3740**, and if you desaturate by 10%, it is **36.7630, 0.3455, 0.3502**.

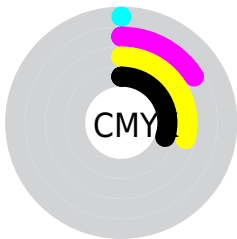
Distribution



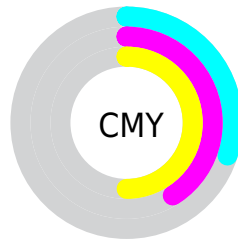
- Red (70%)
- Green (59%)
- Blue (50%)



- Red (70%)
- Yellow (66%)
- Blue (50%)



- Cyan (0%)
- Magenta (16%)
- Yellow (29%)
- Black (30%)




- Cyan (30%)
- Magenta (41%)
- Yellow (50%)

Brightness & Saturation Gradients


These gradients show how the Yxy color 32.9287, 0.3665, 0.3621 changes by changing the brightness by 10 percent. The first figure shows a shift by +10% for each color and the second figure -10%.


Similar to the brightness gradients but the following saturation gradients show a change of the Yxy color 32.9287, 0.3665, 0.3621 by changing the saturation by 10% instead.


 32.9287, 0.3665,
0.3621


 32.9287, 0.3665,
0.3621


315.3283, 0.3379,
0.3451


 22.0718, 0.3742,
0.3664


 64.2642, 0.3557,
0.3558

 13.9097, 0.3844,
0.3720

 85.5116, 0.3518,
0.3535

 8.0579, 0.3986,
0.3795


 110.9913, 0.3485,
0.3515

 4.1320, 0.4194,
0.3897

141.0878, 0.3457,
0.3499

 1.7477, 0.4580,
0.4088

176.1853, 0.3434,
0.3484

 0.4542, 0.5733,
0.4267

216.6683, 0.3413,

 0.0000, 0.0000,

0.3472

0.0000

262.9212, 0.3395,
0.3461

■ 32.9287, 0.3665,
0.3621

■ 32.9287, 0.3665,
0.3621

■ 29.4520, 0.3903,
0.3740

■ 36.7630, 0.3455,
0.3502

■ 26.3171, 0.4168,
0.3852

■ 40.9608, 0.3272,
0.3388

■ 23.5138, 0.4455,
0.3949

■ 45.5337, 0.3113,
0.3280

■ 21.0294, 0.4754,
0.4020

■ 50.4915, 0.2976,
0.3180

■ 18.8503, 0.5049,
0.4050

■ 55.8433, 0.2857,
0.3087

■ 16.9614, 0.5318,
0.4031

■ 61.5981, 0.2755,
0.3002

■ 15.3412, 0.5550,
0.3964

■ 67.7645, 0.2666,
0.2924

■ 15.1989, 0.5572,
0.3958

■ 73.3319, 0.2665,
0.3011

■ 79.0458, 0.2677,
0.3123

Harmonies

Analogous

The Analogous color harmony consists of three colors that are next to each other on the color wheel.



32.9287, 0.3659, 0.3405



32.9287, 0.3665, 0.3621



32.9287, 0.3521, 0.3762

Triad

The Triadic color harmony groups three colors that are evenly spaced from another and form a triangle on the color wheel.



32.9287, 0.3665, 0.3621



32.9287, 0.2759, 0.3398



32.9287, 0.2963, 0.2853

Complementary

The Complementary color scheme is a pair of colors which are on the opposite of each other on the color wheel.



32.9287, 0.3665, 0.3621



31.5488, 0.2676, 0.2933

Split Complementary

Split-complementary colors differ from the complementary color scheme. The scheme consists of three colors, the original color and two neighbors of the complement color.



32.9287, 0.2736, 0.2835



32.9287, 0.3665, 0.3621



32.9287, 0.2623, 0.3136

Square

The Square scheme is like the rectangle color scheme, but the four colors are evenly spaced on the color wheel.



32.9287, 0.3665, 0.3621



32.9287, 0.2995, 0.3639



32.9287, 0.2615, 0.2933



32.9287, 0.3244, 0.2975

Rectangle

The Rectangle color scheme consists of four colors that form a rectangle on the color wheel.



32.9287, 0.3665, 0.3621



32.9287, 0.3364, 0.3786



32.9287, 0.2615, 0.2933



32.9287, 0.2878, 0.2835

Sweetspot

The Sweet Spot groups the original color and five complimentary colors.



32.9302, 0.3665, 0.3621



73.2726, 0.3274, 0.3389



27.1818, 0.3406, 0.2873



15.9843, 0.3298, 0.3405



91.1408, 0.3127, 0.3290



17.8868, 0.3127, 0.3290

Same Dimension

The Same Dimension uses a secret algorithm to generate beautiful new colors.



32.9302, 0.3665, 0.3621



54.8265, 0.3818, 0.3699



41.9871, 0.3570, 0.3960



9.1031, 0.3276, 0.3391



10.8651, 0.5552, 0.3973



0.4588, 0.5081, 0.4348

Inverse Universe

The Inverse Universe completely reimagines the original color for something new.



31.5488, 0.2676, 0.2933



51.9334, 0.2573, 0.2839



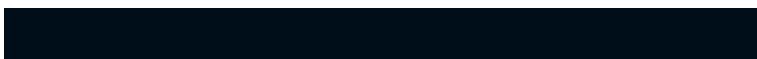
23.8597, 0.2632, 0.2518



8.9900, 0.2985, 0.3187



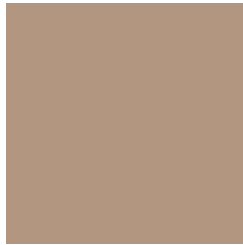
8.8511, 0.1833, 0.1797



0.3925, 0.1960, 0.2256

Previews

White Background



This preview shows how the Yxy color 32.9287, 0.3665, 0.3621 looks on a white background.

Color Contrast Check

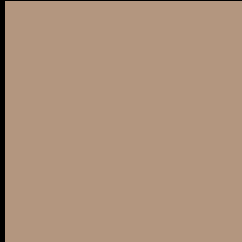
Large Text (above 18pt) WCAG AA × Fail

Any Text WCAG AA × Fail

Large Text (above 18pt) WCAG AAA × Fail

Any Text WCAG AAA × Fail

Black Background



This preview shows how the Yxy color 32.9287, 0.3665, 0.3621 looks on a black background.

Color Contrast Check

Large Text (above 18pt) WCAG AA ✓ Pass

Any Text WCAG AA ✓ Pass

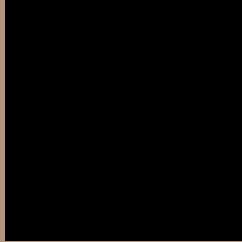
Large Text (above 18pt) WCAG AAA ✓ Pass

Any Text WCAG AAA ✓ Pass

If you want to check with other color combinations, try the [Color Contrast Checker](#).

Yxy 32.9287, 0.3665, 0.3621

Background



This preview shows how black text looks on a background with the Yxy color 32.9287, 0.3665, 0.3621.



This preview shows how white text looks on a background with the Yxy color 32.9287, 0.3665, 0.3621.

Color Blindness Simulation

Color vision deficiency is a very complex topic, and I could not describe the different causes any better than Wikipedia does, so if you want to learn more, you should check out their [article about color blindness](#).

Dichromacy



Original Color

32.9287, 0.3665, 0.3621

Protanopia

32.9469, 0.3457, 0.3667

Deuteranopia

32.7305, 0.3680, 0.3606



Tritanopia

32.9372, 0.3397, 0.3138

Trichromacy



Original Color

32.9287, 0.3665, 0.3621

Protanomaly

32.8025, 0.3526, 0.3647

Deuteranomaly

32.7305, 0.3680, 0.3606

Tritanomaly

32.7665, 0.3498, 0.3305

Monochromacy



Original Color

32.9287, 0.3665, 0.3621

Achromatopsia

33.2452, 0.3127, 0.3290

Achromatomaly

33.0480, 0.3313, 0.3424

CSS Examples

Text

The CSS property to change the color of the text to Yxy 32.9287, 0.3665, 0.3621 is called "color". The color property can be set on classes, ids or directly on the HTML element.

This example shows how text in the color `rgb(179, 150, 127)` looks like.

```
.text, #text, p{  
    color:rgb(179, 150, 127)  
}
```

If you want to add a text shadow in that color use the text-shadow property, you can generate a text shadow directly with our [CSS Text Shadow Generator](#).

Here you see how black text with a 4 pixel rgb(179, 150, 127) colored shadow looks like.

```
.shadow{ text-shadow: 4px 4px 2px rgb(179, 150, 127) }
```

Border

The CSS property to change the border of an element to Yxy 32.9287, 0.3665, 0.3621 is called "border". The border property can be set on classes, ids or directly on the HTML element.

This example shows the color as border, it can be applied via the CSS property "border" or "border-color".

```
.border, #border, table{ border:4px solid rgb(179, 150, 127) }
```

If only the border color should be changed use the property `border-color`.

```
.border{ border-color:rgb(179, 150, 127) }
```

If you want to add a box shadow in that color use:

Here you see how a box with a 4 pixel `rgb(179, 150, 127)` colored shadow looks like.

```
.boxshadow{ -moz-box-shadow:4px 4px 4px  
4px rgb(179, 150, 127); -webkit-box-  
shadow:4px 4px 4px 4px rgb(179, 150, 127);  
box-shadow:4px 4px 4px 4px rgb(179, 150,  
127) }
```


Background

The CSS property to change the background color of an element to Yxy 32.9287, 0.3665, 0.3621 is called "background". The background property can be set on classes, ids or directly on the HTML element.

```
.background, #background, body{  
background: rgb(179, 150, 127) }
```

If only the background color should be changed can be used:

```
.background{ background-color: rgb(179,  
150, 127) }
```

This example shows the color as background, it is applied via the CSS property "background".

To optimize and compress your CSS code, you can use our [online CSS compressor and optimizer](#) based on csstidy. If you want to create a linear or radial gradient as background or border, check our [CSS Gradient Generator](#).

Hey! You found this booklet interesting? Support Converting Colors with the new Membership Option!

The pro membership hides all ads, plus gives you double the colors in the color bucket, and more awesome pro features!

[Learn more, Memberships starting at \\$2.50/m!](#)

**Follow me
on Twitter!**

@ConvertingColor