

Converting Colors

$Yxy(33.0961, 0.3768, 0.3665)$

Have a look what the booklet for
Yxy(33.0961, 0.3768, 0.3665)
contains.

Yxy(33.1153, 0.3765, 0.3658)	3
<i>Conversions</i>	4
<i>Details</i>	6
<i>Harmonies</i>	12
<i>Previews</i>	24
<i>Color Blindness Simulation</i>	27
<i>CSS Examples</i>	30

Color

Yxy(33.1153, 0.3765, 0.3658)

Conversions

Conversions Part 1

Format	Color
Hex	B8957B
RGB	184, 149, 123
RGB Percent	72%, 58%, 48%
CMY	0.2785, 0.4156, 0.5177
CMYK	0.00, 0.19, 0.33, 0.28
HSL	26°, 30%, 60%
HSV	26°, 33%, 72%
XYZ	34.0840, 33.1153, 23.3292
YIQ	156.5010, 29.2060, -0.6660

Conversions

Conversions Part 2

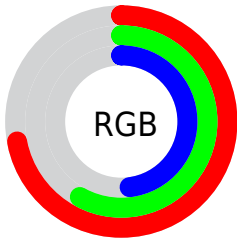
Format	Color
RYB	184, 168, 123
Decimal	12096891
CIELab	64.25, 9.30, 18.69
CIELCh	64, 20.880, 63.536
Yxy	33.1153, 0.3765, 0.3658
Android (android.graphics.Color)	4290286971 (0xFFB8957B)
YUV	156.5010, -16.5160, 24.1166
Hunter-Lab	57.5459, 5.0187, 16.2459

Details

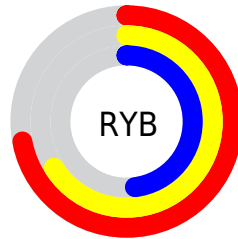
The Yxy color **33.1153, 0.3765, 0.3658** is a light color, and the websafe version is hex **CC9999**. A complement of this color would be **32.1028, 0.2612, 0.2889**, and the grayscale version is **33.5463, 0.3127, 0.3290**.

A 20% lighter version of the original color is **64.5472, 0.3635, 0.3584**, and **13.9756, 0.3983, 0.3759** is the 20% darker color. If you saturate the color by 10%, you get **29.5112, 0.4019, 0.3771**, and if you desaturate by 10%, it is **37.1112, 0.3541, 0.3543**.

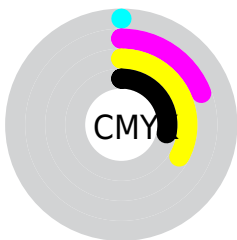
Distribution



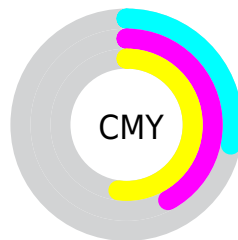
- Red (72%)
- Green (58%)
- Blue (48%)



- Red (72%)
- Yellow (66%)
- Blue (48%)



- Cyan (0%)
- Magenta (19%)
- Yellow (33%)
- Black (28%)





- Cyan (28%)
- Magenta (42%)
- Yellow (52%)

Brightness & Saturation Gradients


These gradients show how the Yxy color 33.1153, 0.3765, 0.3658 changes by changing the brightness by 10 percent. The first figure shows a shift by +10% for each color and the second figure -10%.


Similar to the brightness gradients but the following saturation gradients show a change of the Yxy color 33.1153, 0.3765, 0.3658 by changing the saturation by 10% instead.

 33.1153, 0.3765,
0.3658


 33.1153, 0.3765,
0.3658


316.1690, 0.3426,
0.3471


 22.2148, 0.3856,
0.3705


 64.5555, 0.3637,
0.3590

 14.0148, 0.3976,
0.3764

 85.8640, 0.3591,
0.3564

 8.1310, 0.4142,
0.3841


 111.4106, 0.3552,
0.3543

 4.1789, 0.4383,
0.3942

141.5797, 0.3519,
0.3524

 1.7741, 0.4869,
0.4166

176.7556, 0.3491,
0.3508

 0.4710, 0.5889,
0.4111

217.3229, 0.3466,

 0.0000, 0.0000,

0.3494

0.0000

263.6659, 0.3445,
0.3482

■ 33.1153, 0.3765,
0.3658

■ 33.1153, 0.3765,
0.3658

■ 29.5112, 0.4019,
0.3771

■ 37.1112, 0.3541,
0.3543

■ 26.2814, 0.4299,
0.3875

■ 41.5065, 0.3345,
0.3430

■ 23.4138, 0.4600,
0.3959


■ 46.3141, 0.3176,
0.3322


■ 20.8938, 0.4907,
0.4011


■ 51.5453, 0.3029,
0.3222

■ 18.7054, 0.5202,
0.4018

■ 57.2106, 0.2904,
0.3130

 16.8306, 0.5462,
0.3973

 63.3203, 0.2795,
0.3045

 15.7108, 0.5620,
0.3920

 69.8841, 0.2702,
0.2967

 75.8962, 0.2697,
0.3052

 82.0587, 0.2709,
0.3169

Harmonies

Analogous

The Analogous color harmony consists of three colors that are next to each other on the color wheel.



33.1153, 0.3746, 0.3402



33.1153, 0.3765, 0.3658



33.1153, 0.3605, 0.3836

Triad

The Triadic color harmony groups three colors that are evenly spaced from another and form a triangle on the color wheel.



33.1153, 0.3765, 0.3658



33.1153, 0.2712, 0.3438



33.1153, 0.2911, 0.2776

Complementary

The Complementary color scheme is a pair of colors which are on the opposite of each other on the color wheel.



33.1153, 0.3765, 0.3658



32.1028, 0.2612, 0.2889

Split Complementary

Split-complementary colors differ from the complementary color scheme. The scheme consists of three colors, the original color and two neighbors of the complement color.



33.1153, 0.2655, 0.2763



33.1153, 0.3765, 0.3658



33.1153, 0.2545, 0.3126

Square

The Square scheme is like the rectangle color scheme, but the four colors are evenly spaced on the color wheel.



33.1153, 0.3765, 0.3658



33.1153, 0.2993, 0.3720



33.1153, 0.2525, 0.2883



33.1153, 0.3239, 0.2910

Rectangle

The Rectangle color scheme consists of four colors that form a rectangle on the color wheel.



33.1153, 0.3765, 0.3658



33.1153, 0.3424, 0.3876



33.1153, 0.2525, 0.2883



33.1153, 0.2815, 0.2757

Sweetspot

The Sweet Spot groups the original color and five complimentary colors.



33.1168, 0.3765, 0.3658



77.7884, 0.3292, 0.3397



26.8372, 0.3446, 0.2797



16.5137, 0.3316, 0.3412



93.3107, 0.3127, 0.3290



18.7317, 0.3127, 0.3290

Same Dimension

The Same Dimension uses a secret algorithm to generate beautiful new colors.



33.1168, 0.3765, 0.3658



55.0725, 0.3953, 0.3744



43.8126, 0.3639, 0.4043



9.6256, 0.3277, 0.3388



10.9659, 0.5598, 0.3937



0.5099, 0.5149, 0.4294

Inverse Universe

The Inverse Universe completely reimagines the original color for something new.



32.1028, 0.2612, 0.2889



52.9297, 0.2496, 0.2780



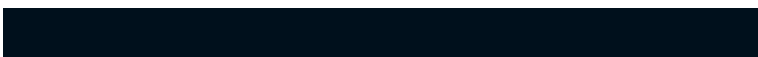
23.1254, 0.2552, 0.2405



9.5510, 0.2985, 0.3190



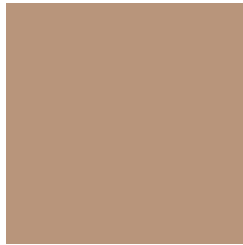
9.5556, 0.1847, 0.1848



0.4570, 0.1961, 0.2259

Previews

White Background



This preview shows how the Yxy color 33.1153, 0.3765, 0.3658 looks on a white background.

Color Contrast Check

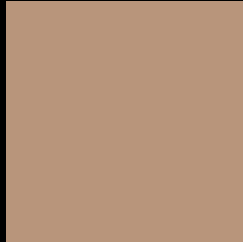
Large Text (above 18pt) WCAG AA × Fail

Any Text WCAG AA × Fail

Large Text (above 18pt) WCAG AAA × Fail

Any Text WCAG AAA × Fail

Black Background



This preview shows how the Yxy color 33.1153, 0.3765, 0.3658 looks on a black background.

Color Contrast Check

Large Text (above 18pt) WCAG AA ✓ Pass

Any Text WCAG AA ✓ Pass

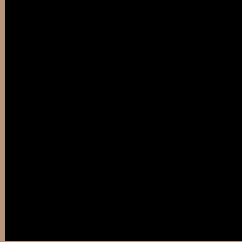
Large Text (above 18pt) WCAG AAA ✓ Pass

Any Text WCAG AAA ✓ Pass

If you want to check with other color combinations, try the [Color Contrast Checker](#).

Yxy 33.1153, 0.3765, 0.3658

Background



This preview shows how black text looks on a background with the Yxy color 33.1153, 0.3765, 0.3658.



This preview shows how white text looks on a background with the Yxy color 33.1153, 0.3765, 0.3658.

Color Blindness Simulation

Color vision deficiency is a very complex topic, and I could not describe the different causes any better than Wikipedia does, so if you want to learn more, you should check out their [article about color blindness](#).

Dichromacy



Original Color

33.1153, 0.3765, 0.3658

Protanopia

33.2826, 0.3503, 0.3741

Deuteranopia

33.1878, 0.3739, 0.3674



Tritanopia

32.9116, 0.3464, 0.3127

Trichromacy



Original Color

33.1153, 0.3765, 0.3658

Protanomaly

33.0338, 0.3598, 0.3702

Deuteranomaly

33.3100, 0.3750, 0.3673

Tritanomaly

33.0105, 0.3576, 0.3319

Monochromacy



Original Color

33.1153, 0.3765, 0.3658

Achromatopsia

33.7164, 0.3127, 0.3290

Achromatomaly

33.3710, 0.3344, 0.3423

CSS Examples

Text

The CSS property to change the color of the text to Yxy 33.1153, 0.3765, 0.3658 is called "color". The color property can be set on classes, ids or directly on the HTML element.

This example shows how text in the color `rgb(184, 149, 123)` looks like.

```
.text, #text, p{  
    color:rgb(184, 149, 123)  
}
```

If you want to add a text shadow in that color use the text-shadow property, you can generate a text shadow directly with our [CSS Text Shadow Generator](#).

Here you see how black text with a 4 pixel rgb(184, 149, 123) colored shadow looks like.

```
.shadow{ text-shadow: 4px 4px 2px rgb(184, 149, 123) }
```

Border

The CSS property to change the border of an element to Yxy 33.1153, 0.3765, 0.3658 is called "border". The border property can be set on classes, ids or directly on the HTML element.

This example shows the color as border, it can be applied via the CSS property "border" or "border-color".

```
.border, #border, table{ border:4px solid rgb(184, 149, 123) }
```

If only the border color should be changed use the property `border-color`.

```
.border{ border-color:rgb(184, 149, 123) }
```

If you want to add a box shadow in that color use:

Here you see how a box with a 4 pixel `rgb(184, 149, 123)` colored shadow looks like.

```
.boxshadow{ -moz-box-shadow:4px 4px 4px  
4px rgb(184, 149, 123); -webkit-box-  
shadow:4px 4px 4px 4px rgb(184, 149, 123);  
box-shadow:4px 4px 4px 4px rgb(184, 149,  
123) }
```


Background

The CSS property to change the background color of an element to Yxy 33.1153, 0.3765, 0.3658 is called "background". The background property can be set on classes, ids or directly on the HTML element.

```
.background, #background, body{  
background: rgb(184, 149, 123) }
```

If only the background color should be changed can be used:

```
.background{ background-color: rgb(184,  
149, 123) }
```

This example shows the color as background, it is applied via the CSS property "background".

To optimize and compress your CSS code, you can use our [online CSS compressor and optimizer](#) based on csstidy. If you want to create a linear or radial gradient as background or border, check our [CSS Gradient Generator](#).

Hey! You found this booklet interesting? Support Converting Colors with the new Membership Option!

The pro membership hides all ads, plus gives you double the colors in the color bucket, and more awesome pro features!

[Learn more, Memberships starting at \\$2.50/m!](#)

**Follow me
on Twitter!**

@ConvertingColor