

Converting Colors

$Y_{xy}(33.5296, 0.3500, 0.3376)$

Have a look what the booklet for
Yxy(33.5296, 0.3500, 0.3376)
contains.

Yxy(33.5296, 0.3500, 0.3376)	3
Conversions	4
Details	6
Harmonies	12
Previews	24
Color Blindness Simulation	27
CSS Examples	30

Color

Yxy(33.5296, 0.3500, 0.3376)

Conversions

Conversions Part 1

Format	Color
Hex	B49690
RGB	180, 150, 144
RGB Percent	71%, 59%, 56%
CMY	0.2942, 0.4117, 0.4353
CMYK	0.00, 0.17, 0.20, 0.29
HSL	10°, 19%, 64%
HSV	10°, 20%, 71%
XYZ	34.7611, 33.5296, 31.0268
YIQ	158.2860, 19.8060, 4.4940

Conversions

Conversions Part 2

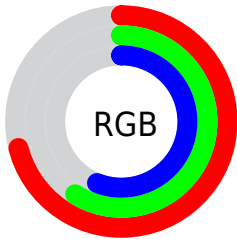
Format	Color
R _Y B	180, 151, 144
Decimal	11835024
CIE Lab	64.59, 10.21, 7.33
CIE LCh	65, 12.567, 35.702
Yxy	33.5296, 0.3500, 0.3376
Android (android.graphics.Color)	4290025104 (0xFFB49690)
YUV	158.2860, -7.0430, 19.0432
Hunter-Lab	57.9047, 5.8231, 8.7643

Details

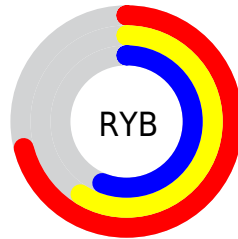
The Yxy color **33.5296, 0.3500, 0.3376** is a light color, and the websafe version is hex **CC9999**. A complement of this color would be **39.4914, 0.2828, 0.3202**, and the grayscale version is **34.3549, 0.3127, 0.3290**.

A 20% lighter version of the original color is **65.0958, 0.3422, 0.3356**, and **14.2439, 0.3626, 0.3390** is the 20% darker color. If you saturate the color by 10%, you get **28.5398, 0.3748, 0.3422**, and if you desaturate by 10%, it is **39.2227, 0.3295, 0.3332**.

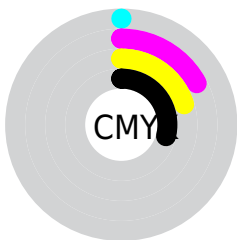
Distribution



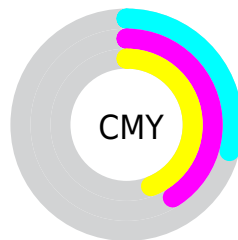
- Red (71%)
- Green (59%)
- Blue (56%)



- Red (71%)
- Yellow (59%)
- Blue (56%)



- Cyan (0%)
- Magenta (17%)
- Yellow (20%)
- Black (29%)





- Cyan (29%)
- Magenta (41%)
- Yellow (44%)

Brightness & Saturation Gradients


These gradients show how the Yxy color 33.5296, 0.3500, 0.3376 changes by changing the brightness by 10 percent. The first figure shows a shift by +10% for each color and the second figure -10%.


Similar to the brightness gradients but the following saturation gradients show a change of the Yxy color 33.5296, 0.3500, 0.3376 by changing the saturation by 10% instead.


 33.5296, 0.3500,
0.3376


 33.5296, 0.3500,
0.3376


318.0294, 0.3302,
0.3333

 22.5325, 0.3554,
0.3386


 65.2015, 0.3425,
0.3361

 14.2487, 0.3625,
0.3400


 86.6450, 0.3398,
0.3355

 8.2938, 0.3725,
0.3417


112.3395, 0.3375,
0.3350

 4.2835, 0.3875,
0.3439

142.6693, 0.3356,
0.3346

 1.8334, 0.4122,
0.3468

178.0188, 0.3340,
0.3342

 0.5079, 0.5718,
0.3968

218.7723, 0.3325,

 0.0000, 0.0000,

0.3339

0.0000

265.3144, 0.3313,
0.3336

■ 33.5296, 0.3500,
0.3376

■ 33.5296, 0.3500,
0.3376

■ 28.5398, 0.3748,
0.3422

■ 39.2227, 0.3295,
0.3332

■ 24.2216, 0.4044,
0.3468

■ 45.6402, 0.3127,
0.3290

■ 20.5475, 0.4393,
0.3509

■ 52.8082, 0.2988,
0.3252

■ 17.4863, 0.4787,
0.3540

■ 60.7497, 0.2873,
0.3217

■ 15.0043, 0.5210,
0.3552

■ 69.4872, 0.2778,
0.3185

■ 13.0644, 0.5622,
0.3539

■ 79.0419, 0.2698,
0.3157

■ 11.6252, 0.5973,
0.3495

■ 88.4304, 0.2701,
0.3289

■ 10.6326, 0.6230,
0.3435

■ 88.4421, 0.2701,
0.3289

■ 10.6320, 0.6230,
0.3435

Harmonies

Analogous

The Analogous color harmony consists of three colors that are next to each other on the color wheel.



33.5296, 0.3391, 0.3209



33.5296, 0.3500, 0.3376



33.5296, 0.3505, 0.3528

Triad

The Triadic color harmony groups three colors that are evenly spaced from another and form a triangle on the color wheel.



33.5296, 0.3500, 0.3376



33.5296, 0.3036, 0.3532



33.5296, 0.2850, 0.2967

Complementary

The Complementary color scheme is a pair of colors which are on the opposite of each other on the color wheel.



33.5296, 0.3500, 0.3376



39.4914, 0.2828, 0.3202

Split Complementary

Split-complementary colors differ from the complementary color scheme. The scheme consists of three colors, the original color and two neighbors of the complement color.



33.5296, 0.2762, 0.3040



33.5296, 0.3500, 0.3376



33.5296, 0.2867, 0.3367

Square

The Square scheme is like the rectangle color scheme, but the four colors are evenly spaced on the color wheel.



33.5296, 0.3500, 0.3376



33.5296, 0.3233, 0.3626



33.5296, 0.2768, 0.3185



33.5296, 0.3013, 0.2977

Rectangle

The Rectangle color scheme consists of four colors that form a rectangle on the color wheel.



33.5296, 0.3500, 0.3376



33.5296, 0.3449, 0.3599



33.5296, 0.2768, 0.3185



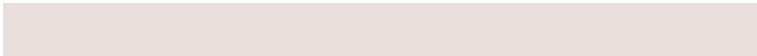
33.5296, 0.2811, 0.2982

Sweetspot

The Sweet Spot groups the original color and five complimentary colors.



33.5311, 0.3500, 0.3376



75.4964, 0.3226, 0.3315



32.7057, 0.3208, 0.2880



16.1599, 0.3237, 0.3318



91.1408, 0.3127, 0.3290



17.8868, 0.3127, 0.3290

Same Dimension

The Same Dimension uses a secret algorithm to generate beautiful new colors.



33.5311, 0.3500, 0.3376



56.6542, 0.3604, 0.3396



39.7191, 0.3453, 0.3623



8.7268, 0.3283, 0.3329



7.4902, 0.6213, 0.3448



0.3054, 0.5746, 0.3819

Inverse Universe

The Inverse Universe completely reimagines the original color for something new.



39.4914, 0.2828, 0.3202



69.4374, 0.2764, 0.3181



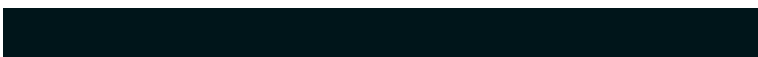
33.0015, 0.2811, 0.2933



9.3854, 0.2986, 0.3251



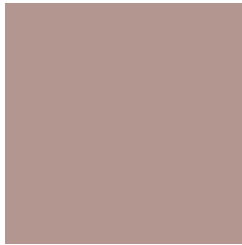
17.6017, 0.2099, 0.2758



0.6178, 0.2145, 0.2921

Previews

White Background



This preview shows how the Yxy color 33.5296, 0.3500, 0.3376 looks on a white background.

Color Contrast Check

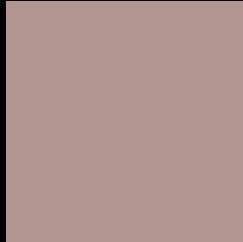
Large Text (above 18pt) WCAG AA × Fail

Any Text WCAG AA × Fail

Large Text (above 18pt) WCAG AAA × Fail

Any Text WCAG AAA × Fail

Black Background



This preview shows how the Yxy color 33.5296, 0.3500, 0.3376 looks on a black background.

Color Contrast Check

Large Text (above 18pt) WCAG AA ✓ Pass

Any Text WCAG AA ✓ Pass

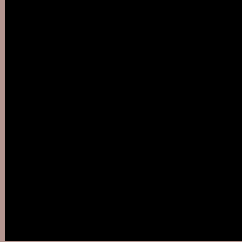
Large Text (above 18pt) WCAG AAA ✓ Pass

Any Text WCAG AAA ✓ Pass

If you want to check with other color combinations, try the [Color Contrast Checker](#).

Yxy 33.5296, 0.3500, 0.3376

Background



This preview shows how black text looks on a background with the Yxy color 33.5296, 0.3500, 0.3376.



This preview shows how white text looks on a background with the Yxy color 33.5296, 0.3500, 0.3376.

Color Blindness Simulation

Color vision deficiency is a very complex topic, and I could not describe the different causes any better than Wikipedia does, so if you want to learn more, you should check out their [article about color blindness](#).

Dichromacy



Original Color

33.5296, 0.3500, 0.3376

Protanopia

33.5649, 0.3271, 0.3425

Deuteranopia

33.4939, 0.3466, 0.3391



Tritanopia

33.6281, 0.3373, 0.3138

Trichromacy



Original Color

33.5296, 0.3500, 0.3376

Protanomaly

33.6215, 0.3355, 0.3408

Deuteranomaly

33.6118, 0.3476, 0.3391

Tritanomaly

33.6517, 0.3411, 0.3221

Monochromacy



Original Color

33.5296, 0.3500, 0.3376

Achromatopsia

34.1914, 0.3127, 0.3290

Achromatomaly

33.8496, 0.3256, 0.3320

CSS Examples

Text

The CSS property to change the color of the text to Yxy 33.5296, 0.3500, 0.3376 is called "color". The color property can be set on classes, ids or directly on the HTML element.

This example shows how text in the color `rgb(180, 150, 144)` looks like.

```
.text, #text, p{  
    color:rgb(180, 150, 144)  
}
```

If you want to add a text shadow in that color use the text-shadow property, you can generate a text shadow directly with our [CSS Text Shadow Generator](#).

Here you see how black text with a 4 pixel rgb(180, 150, 144) colored shadow looks like.

```
.shadow{ text-shadow: 4px 4px 2px rgb(180, 150, 144) }
```

Border

The CSS property to change the border of an element to Yxy 33.5296, 0.3500, 0.3376 is called "border". The border property can be set on classes, ids or directly on the HTML element.

This example shows the color as border, it can be applied via the CSS property "border" or "border-color".

```
.border, #border, table{ border:4px solid rgb(180, 150, 144) }
```

If only the border color should be changed use the property `border-color`.

```
.border{ border-color:rgb(180, 150, 144) }
```

If you want to add a box shadow in that color use:

Here you see how a box with a 4 pixel `rgb(180, 150, 144)` colored shadow looks like.

```
.boxshadow{ -moz-box-shadow:4px 4px 4px  
4px rgb(180, 150, 144); -webkit-box-  
shadow:4px 4px 4px 4px rgb(180, 150, 144);  
box-shadow:4px 4px 4px 4px rgb(180, 150,  
144) }
```


Background

The CSS property to change the background color of an element to Yxy 33.5296, 0.3500, 0.3376 is called "background". The background property can be set on classes, ids or directly on the HTML element.

```
.background, #background, body{  
background: rgb(180, 150, 144) }
```

If only the background color should be changed can be used:

```
.background{ background-color: rgb(180,  
150, 144) }
```

This example shows the color as background, it is applied via the CSS property "background".

To optimize and compress your CSS code, you can use our [online CSS compressor and optimizer](#) based on csstidy. If you want to create a linear or radial gradient as background or border, check our [CSS Gradient Generator](#).

Hey! You found this booklet interesting? Support Converting Colors with the new Membership Option!

The pro membership hides all ads, plus gives you double the colors in the color bucket, and more awesome pro features!

[Learn more, Memberships starting at \\$2.50/m!](#)

**Follow me
on Twitter!**

@ConvertingColor