

Converting Colors

$Yxy(33.5335, 0.3724, 0.3674)$

Have a look what the booklet for
Yxy(33.5335, 0.3724, 0.3674)
contains.

Yxy(33.5335, 0.3724, 0.3674)	3
Conversions	4
Details	6
Harmonies	12
Previews	24
Color Blindness Simulation	27
CSS Examples	30

Color

Yxy(33.5335, 0.3724, 0.3674)

Conversions

Conversions Part 1

Format	Color
Hex	B6977C
RGB	182, 151, 124
RGB Percent	71%, 59%, 49%
CMY	0.2864, 0.4078, 0.5137
CMYK	0.00, 0.17, 0.32, 0.29
HSL	28°, 28%, 60%
HSV	28°, 32%, 71%
XYZ	33.9899, 33.5335, 23.7491
YIQ	157.1910, 27.1430, -1.8250

Conversions

Conversions Part 2

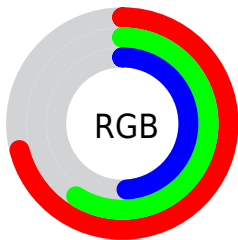
Format	Color
RYB	182, 175, 124
Decimal	11966332
CIELab	64.59, 7.53, 18.56
CIElCh	65, 20.027, 67.922
Yxy	33.5335, 0.3724, 0.3674
Android (android.graphics.Color)	4290156412 (0xFFB6977C)
YUV	157.1910, -16.3632, 21.7575
Hunter-Lab	57.9081, 3.4335, 16.2199

Details

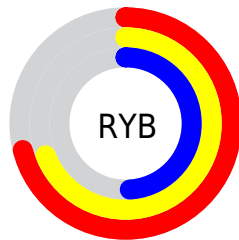
The Yxy color **33.5335, 0.3724, 0.3674** is a light color, and the websafe version is hex **CC9999**. A complement of this color would be **31.0858, 0.2629, 0.2871**, and the grayscale version is **33.8727, 0.3127, 0.3290**.

A 20% lighter version of the original color is **65.1877, 0.3606, 0.3596**, and **14.2115, 0.3921, 0.3783** is the 20% darker color. If you saturate the color by 10%, you get **30.1166, 0.3965, 0.3798**, and if you desaturate by 10%, it is **37.2962, 0.3509, 0.3549**.

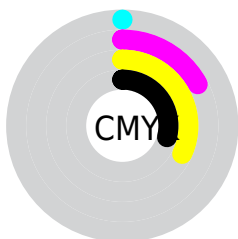
Distribution



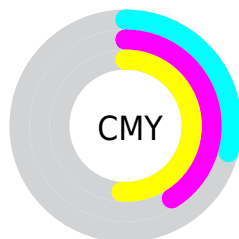
- Red (71%)
- Green (59%)
- Blue (49%)



- Red (71%)
- Yellow (69%)
- Blue (49%)



- Cyan (0%)
- Magenta (17%)
- Yellow (32%)
- Black (29%)





- Cyan (29%)
- Magenta (41%)
- Yellow (51%)

Brightness & Saturation Gradients


These gradients show how the Yxy color 33.5335, 0.3724, 0.3674 changes by changing the brightness by 10 percent. The first figure shows a shift by +10% for each color and the second figure -10%.


Similar to the brightness gradients but the following saturation gradients show a change of the Yxy color 33.5335, 0.3724, 0.3674 by changing the saturation by 10% instead.


 33.5335, 0.3724,
0.3674


 33.5335, 0.3724,
0.3674


318.0469, 0.3408,
0.3478

 22.5355, 0.3808,
0.3724


 65.2076, 0.3605,
0.3602

 14.2509, 0.3920,
0.3787


 86.6524, 0.3562,
0.3575

 8.2954, 0.4073,
0.3871

 112.3482, 0.3525,
0.3553

 4.2845, 0.4296,
0.3983

142.6795, 0.3495,
0.3533

 1.8340, 0.4729,
0.4212

178.0306, 0.3468,
0.3517

 0.5082, 0.5675,
0.4325

218.7860, 0.3446,

 0.0000, 0.0000,

0.3502

0.0000

265.3299, 0.3426,
0.3489

■ 33.5335, 0.3724,
0.3674

■ 33.5335, 0.3724,
0.3674

■ 30.1166, 0.3965,
0.3798

■ 37.2962, 0.3509,
0.3549

■ 27.0300, 0.4231,
0.3913

■ 41.4102, 0.3320,
0.3427

■ 24.2636, 0.4513,
0.4009

■ 45.8871, 0.3155,
0.3311

■ 21.8051, 0.4802,
0.4075

■ 50.7360, 0.3012,
0.3202

■ 19.6409, 0.5080,
0.4097

■ 55.9661, 0.2888,
0.3102

■ 17.7560, 0.5327,
0.4067

■ 61.5860, 0.2781,
0.3010

■ 16.4091, 0.5505,
0.4011

■ 67.6040, 0.2687,
0.2926

■ 73.0539, 0.2680,
0.2999

■ 78.5732, 0.2691,
0.3108

Harmonies

Analogous

The Analogous color harmony consists of three colors that are next to each other on the color wheel.



33.5335, 0.3732, 0.3436



33.5335, 0.3724, 0.3674



33.5335, 0.3550, 0.3826

Triad

The Triadic color harmony groups three colors that are evenly spaced from another and form a triangle on the color wheel.



33.5335, 0.3724, 0.3674



33.5335, 0.2699, 0.3388



33.5335, 0.2965, 0.2810

Complementary

The Complementary color scheme is a pair of colors which are on the opposite of each other on the color wheel.



33.5335, 0.3724, 0.3674



31.0858, 0.2629, 0.2871

Split Complementary

Split-complementary colors differ from the complementary color scheme. The scheme consists of three colors, the original color and two neighbors of the complement color.



33.5335, 0.2705, 0.2779



33.5335, 0.3724, 0.3674



33.5335, 0.2558, 0.3095

Square

The Square scheme is like the rectangle color scheme, but the four colors are evenly spaced on the color wheel.



33.5335, 0.3724, 0.3674



33.5335, 0.2956, 0.3666



33.5335, 0.2560, 0.2877



33.5335, 0.3281, 0.2953

Rectangle

The Rectangle color scheme consists of four colors that form a rectangle on the color wheel.



33.5335, 0.3724, 0.3674



33.5335, 0.3369, 0.3847



33.5335, 0.2560, 0.2877



33.5335, 0.2868, 0.2786

Sweetspot

The Sweet Spot groups the original color and five complimentary colors.



33.5351, 0.3724, 0.3674



76.4311, 0.3291, 0.3407



26.7521, 0.3452, 0.2843



16.6382, 0.3315, 0.3423



93.3107, 0.3127, 0.3290



18.7317, 0.3127, 0.3290

Same Dimension

The Same Dimension uses a secret algorithm to generate beautiful new colors.



33.5351, 0.3724, 0.3674



56.5495, 0.3885, 0.3759



43.6632, 0.3611, 0.4037



9.6837, 0.3276, 0.3397



11.7233, 0.5486, 0.4026



0.5373, 0.5069, 0.4357

Inverse Universe

The Inverse Universe completely reimagines the original color for something new.



31.0858, 0.2629, 0.2871



51.4246, 0.2521, 0.2765



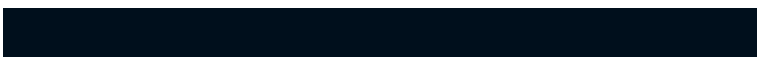
22.8131, 0.2574, 0.2414



9.4920, 0.2985, 0.3181



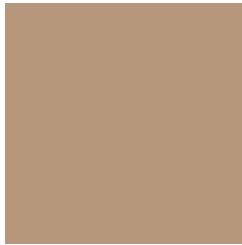
8.5786, 0.1809, 0.1713



0.4250, 0.1933, 0.2158

Previews

White Background



This preview shows how the Yxy color 33.5335, 0.3724, 0.3674 looks on a white background.

Color Contrast Check

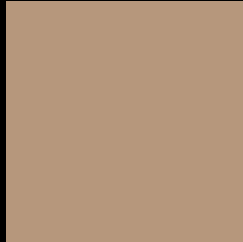
Large Text (above 18pt) WCAG AA × Fail

Any Text WCAG AA × Fail

Large Text (above 18pt) WCAG AAA × Fail

Any Text WCAG AAA × Fail

Black Background



This preview shows how the Yxy color 33.5335, 0.3724, 0.3674 looks on a black background.

Color Contrast Check

Large Text (above 18pt) WCAG AA ✓ Pass

Any Text WCAG AA ✓ Pass

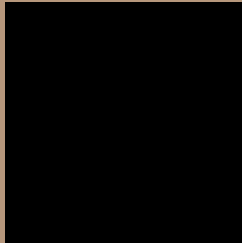
Large Text (above 18pt) WCAG AAA ✓ Pass

Any Text WCAG AAA ✓ Pass

If you want to check with other color combinations, try the [Color Contrast Checker](#).

Yxy 33.5335, 0.3724, 0.3674

Background



This preview shows how black text looks on a background with the Yxy color 33.5335, 0.3724, 0.3674.



This preview shows how white text looks on a background with the Yxy color 33.5335, 0.3724, 0.3674.

Color Blindness Simulation

Color vision deficiency is a very complex topic, and I could not describe the different causes any better than Wikipedia does, so if you want to learn more, you should check out their [article about color blindness](#).

Dichromacy



Original Color

33.5335, 0.3724, 0.3674

Protanopia

33.7532, 0.3501, 0.3738

Deuteranopia

33.6557, 0.3735, 0.3672



Tritanopia

33.4655, 0.3429, 0.3126

Trichromacy



Original Color

33.5335, 0.3724, 0.3674

Protanomaly

33.7197, 0.3581, 0.3715

Deuteranomaly

33.6557, 0.3735, 0.3672

Tritanomaly

33.5694, 0.3538, 0.3319

Monochromacy



Original Color

33.5335, 0.3724, 0.3674

Achromatopsia

33.7164, 0.3127, 0.3290

Achromatomaly

33.5940, 0.3332, 0.3438

CSS Examples

Text

The CSS property to change the color of the text to Yxy 33.5335, 0.3724, 0.3674 is called "color". The color property can be set on classes, ids or directly on the HTML element.

This example shows how text in the color `rgb(182, 151, 124)` looks like.

```
.text, #text, p{  
    color:rgb(182, 151, 124)  
}
```

If you want to add a text shadow in that color use the text-shadow property, you can generate a text shadow directly with our [CSS Text Shadow Generator](#).

Here you see how black text with a 4 pixel rgb(182, 151, 124) colored shadow looks like.

```
.shadow{ text-shadow: 4px 4px 2px rgb(182, 151, 124) }
```

Border

The CSS property to change the border of an element to Yxy 33.5335, 0.3724, 0.3674 is called "border". The border property can be set on classes, ids or directly on the HTML element.

This example shows the color as border, it can be applied via the CSS property "border" or "border-color".

```
.border, #border, table{ border:4px solid rgb(182, 151, 124) }
```

If only the border color should be changed use the property `border-color`.

```
.border{ border-color:rgb(182, 151, 124) }
```

If you want to add a box shadow in that color use:

Here you see how a box with a 4 pixel `rgb(182, 151, 124)` colored shadow looks like.

```
.boxshadow{ -moz-box-shadow:4px 4px 4px 4px rgb(182, 151, 124); -webkit-box-shadow:4px 4px 4px 4px rgb(182, 151, 124); box-shadow:4px 4px 4px 4px rgb(182, 151, 124) }
```


Background

The CSS property to change the background color of an element to Yxy 33.5335, 0.3724, 0.3674 is called "background". The background property can be set on classes, ids or directly on the HTML element.

```
.background, #background, body{  
background: rgb(182, 151, 124) }
```

If only the background color should be changed can be used:

```
.background{ background-color: rgb(182,  
151, 124) }
```

This example shows the color as background, it is applied via the CSS property "background".

To optimize and compress your CSS code, you can use our [online CSS compressor and optimizer](#) based on csstidy. If you want to create a linear or radial gradient as background or border, check our [CSS Gradient Generator](#).

Hey! You found this booklet interesting? Support Converting Colors with the new Membership Option!

The pro membership hides all ads, plus gives you double the colors in the color bucket, and more awesome pro features!

[Learn more, Memberships starting at \\$2.50/m!](#)

**Follow me
on Twitter!**

@ConvertingColor