

Converting Colors

$Yxy(33.7033, 0.3445, 0.3208)$

Have a look what the booklet for
Yxy(33.7033, 0.3445, 0.3208)
contains.

Yxy(33.7033, 0.3445, 0.3208)	3
Conversions	4
Details	6
Harmonies	12
Previews	24
Color Blindness Simulation	27
CSS Examples	30

Color

Yxy(33.7033, 0.3445, 0.3208)

Conversions

Conversions Part 1

Format	Color
Hex	B8949A
RGB	184, 148, 154
RGB Percent	72%, 58%, 60%
CMY	0.2783, 0.4196, 0.3961
CMYK	0.00, 0.20, 0.16, 0.28
HSL	350°, 20%, 65%
HSV	350°, 20%, 72%
XYZ	36.1932, 33.7033, 35.1636
YIQ	159.4480, 19.5300, 9.4980

Conversions

Conversions Part 2

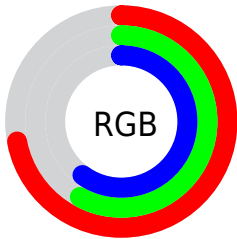
Format	Color
RYB	184, 148, 154
Decimal	12096666
CIELab	64.73, 14.45, 1.97
CIELCh	65, 14.584, 7.749
Yxy	33.7033, 0.3445, 0.3208
Android (android.graphics.Color)	4290286746 (0xFFB8949A)
YUV	159.4480, -2.6859, 21.5321
Hunter-Lab	58.0545, 9.6877, 4.7262

Details

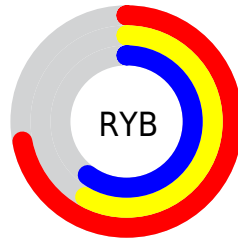
The Yxy color **33.7033, 0.3445, 0.3208** is a light color, and the websafe version is hex **CC9999**. A complement of this color would be **43.8026, 0.2881, 0.3374**, and the grayscale version is **34.8940, 0.3127, 0.3290**.

A 20% lighter version of the original color is **65.3204, 0.3381, 0.3227**, and **14.2745, 0.3544, 0.3176** is the 20% darker color. If you saturate the color by 10%, you get **27.9046, 0.3666, 0.3163**, and if you desaturate by 10%, it is **40.4882, 0.3266, 0.3251**.

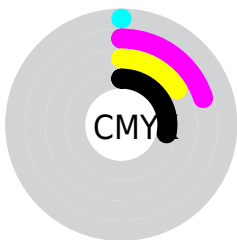
Distribution



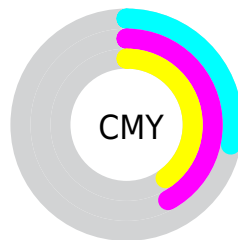
- Red (72%)
- Green (58%)
- Blue (60%)



- Red (72%)
- Yellow (58%)
- Blue (60%)



- Cyan (0%)
- Magenta (20%)
- Yellow (16%)
- Black (28%)





- Cyan (28%)
- Magenta (42%)
- Yellow (40%)

Brightness & Saturation Gradients

These gradients show how the Yxy color 33.7033, 0.3445, 0.3208 changes by changing the brightness by 10 percent. The first figure shows a shift by +10% for each color and the second figure -10%.


Similar to the brightness gradients but the following saturation gradients show a change of the Yxy color 33.7033, 0.3445, 0.3208 by changing the saturation by 10% instead.


 33.7033, 0.3445,
0.3208


 33.7033, 0.3445,
0.3208


318.8070, 0.3277,
0.3252

 22.6658, 0.3490,
0.3196


 65.4720, 0.3382,
0.3225

 14.3469, 0.3550,
0.3179


 86.9720, 0.3358,
0.3231

 8.3623, 0.3634,
0.3156


112.7282, 0.3339,
0.3236

 4.3277, 0.3760,
0.3120

143.1251, 0.3323,
0.3240

 1.8585, 0.3967,
0.3059

178.5470, 0.3309,
0.3244

 0.5232, 0.4708,
0.2898

219.3784, 0.3297,

 0.0000, 0.0000,

0.3247

0.0000

266.0036, 0.3286,
0.3250

■ 33.7033, 0.3445,
0.3208

■ 33.7033, 0.3445,
0.3208

■ 27.9046, 0.3666,
0.3163

■ 40.4882, 0.3266,
0.3251

■ 23.0418, 0.3936,
0.3119

■ 48.2973, 0.3122,
0.3292

■ 19.0670, 0.4260,
0.3080

■ 57.1726, 0.3005,
0.3329

■ 15.9263, 0.4637,
0.3051

■ 67.1519, 0.2910,
0.3363

■ 13.5599, 0.5053,
0.3041

■ 78.2715, 0.2832,
0.3394

■ 11.9001, 0.5475,
0.3056

■ 88.3699, 0.2765,
0.3386

■ 10.8672, 0.5854,
0.3101

■ 88.9334, 0.2721,
0.3289

■ 10.3105, 0.6147,
0.3164

■ 10.2902, 0.6157,
0.3166

Harmonies

Analogous

The Analogous color harmony consists of three colors that are next to each other on the color wheel.



33.7033, 0.3239, 0.3040



33.7033, 0.3445, 0.3208



33.7033, 0.3564, 0.3401

Triad

The Triadic color harmony groups three colors that are evenly spaced from another and form a triangle on the color wheel.



33.7033, 0.3445, 0.3208



33.7033, 0.3233, 0.3678



33.7033, 0.2710, 0.2991

Complementary

The Complementary color scheme is a pair of colors which are on the opposite of each other on the color wheel.



33.7033, 0.3445, 0.3208



43.8026, 0.2881, 0.3374

Split Complementary

Split-complementary colors differ from the complementary color scheme. The scheme consists of three colors, the original color and two neighbors of the complement color.



33.7033, 0.2709, 0.3153



33.7033, 0.3445, 0.3208



33.7033, 0.3006, 0.3561

Square

The Square scheme is like the rectangle color scheme, but the four colors are evenly spaced on the color wheel.



33.7033, 0.3445, 0.3208



33.7033, 0.3438, 0.3679



33.7033, 0.2815, 0.3364



33.7033, 0.2817, 0.2915

Rectangle

The Rectangle color scheme consists of four colors that form a rectangle on the color wheel.



33.7033, 0.3445, 0.3208



33.7033, 0.3576, 0.3521



33.7033, 0.2815, 0.3364



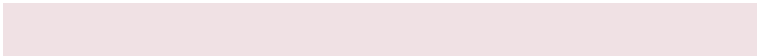
33.7033, 0.2697, 0.3037

Sweetspot

The Sweet Spot groups the original color and five complimentary colors.



33.7048, 0.3445, 0.3208



78.0806, 0.3212, 0.3266



34.1078, 0.3091, 0.2803



16.6410, 0.3222, 0.3263



93.3107, 0.3127, 0.3290



18.7317, 0.3127, 0.3290

Same Dimension

The Same Dimension uses a secret algorithm to generate beautiful new colors.



33.7048, 0.3445, 0.3208



56.8739, 0.3524, 0.3191



37.4751, 0.3476, 0.3456



9.0359, 0.3262, 0.3252



7.0971, 0.6132, 0.3152



0.2578, 0.5494, 0.2800

Inverse Universe

The Inverse Universe completely reimagines the original color for something new.



33.7048, 0.3445, 0.3208



56.8739, 0.3524, 0.3191



39.2682, 0.2828, 0.3118



9.0359, 0.3262, 0.3252



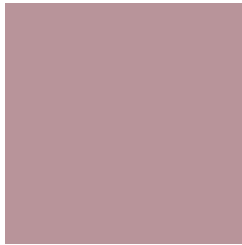
7.0971, 0.6132, 0.3152



0.2578, 0.5494, 0.2800

Previews

White Background



This preview shows how the Yxy color 33.7033, 0.3445, 0.3208 looks on a white background.

Color Contrast Check

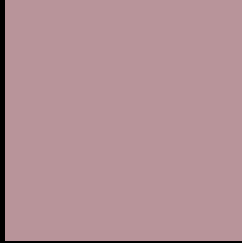
Large Text (above 18pt) WCAG AA × Fail

Any Text WCAG AA × Fail

Large Text (above 18pt) WCAG AAA × Fail

Any Text WCAG AAA × Fail

Black Background



This preview shows how the Yxy color 33.7033, 0.3445, 0.3208 looks on a black background.

Color Contrast Check

Large Text (above 18pt) WCAG AA ✓ Pass

Any Text WCAG AA ✓ Pass

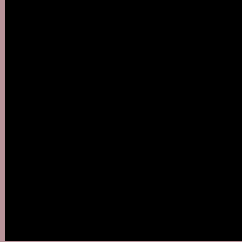
Large Text (above 18pt) WCAG AAA ✓ Pass

Any Text WCAG AAA ✓ Pass

If you want to check with other color combinations, try the [Color Contrast Checker](#).

Yxy 33.7033, 0.3445, 0.3208

Background



This preview shows how black text looks on a background with the Yxy color 33.7033, 0.3445, 0.3208.



This preview shows how white text looks on a background with the Yxy color 33.7033, 0.3445, 0.3208.

Color Blindness Simulation

Color vision deficiency is a very complex topic, and I could not describe the different causes any better than Wikipedia does, so if you want to learn more, you should check out their [article about color blindness](#).

Dichromacy



Original Color

33.7033, 0.3445, 0.3208

Protanopia

33.6511, 0.3129, 0.3246

Deuteranopia

33.7551, 0.3342, 0.3276



Tritanopia

33.6849, 0.3406, 0.3126

Trichromacy



Original Color

33.7033, 0.3445, 0.3208

Protanomaly

33.5416, 0.3240, 0.3232

Deuteranomaly

33.8981, 0.3386, 0.3263

Tritanomaly

33.6160, 0.3426, 0.3153

Monochromacy



Original Color

33.7033, 0.3445, 0.3208

Achromatopsia

34.6704, 0.3127, 0.3290

Achromatomaly

34.2018, 0.3238, 0.3261

CSS Examples

Text

The CSS property to change the color of the text to Yxy 33.7033, 0.3445, 0.3208 is called "color". The color property can be set on classes, ids or directly on the HTML element.

This example shows how text in the color `rgb(184, 148, 154)` looks like.

```
.text, #text, p{  
    color:rgb(184, 148, 154)  
}
```

If you want to add a text shadow in that color use the text-shadow property, you can generate a text shadow directly with our [CSS Text Shadow Generator](#).

Here you see how black text with a 4 pixel rgb(184, 148, 154) colored shadow looks like.

```
.shadow{ text-shadow: 4px 4px 2px rgb(184, 148, 154) }
```

Border

The CSS property to change the border of an element to Yxy 33.7033, 0.3445, 0.3208 is called "border". The border property can be set on classes, ids or directly on the HTML element.

This example shows the color as border, it can be applied via the CSS property "border" or "border-color".

```
.border, #border, table{ border:4px solid rgb(184, 148, 154) }
```

If only the border color should be changed use the property `border-color`.

```
.border{ border-color:rgb(184, 148, 154) }
```

If you want to add a box shadow in that color use:

Here you see how a box with a 4 pixel `rgb(184, 148, 154)` colored shadow looks like.

```
.boxshadow{ -moz-box-shadow:4px 4px 4px  
4px rgb(184, 148, 154); -webkit-box-  
shadow:4px 4px 4px 4px rgb(184, 148, 154);  
box-shadow:4px 4px 4px 4px rgb(184, 148,  
154) }
```


Background

The CSS property to change the background color of an element to Yxy 33.7033, 0.3445, 0.3208 is called "background". The background property can be set on classes, ids or directly on the HTML element.

```
.background, #background, body{  
background: rgb(184, 148, 154) }
```

If only the background color should be changed can be used:

```
.background{ background-color: rgb(184,  
148, 154) }
```

This example shows the color as background, it is applied via the CSS property "background".

To optimize and compress your CSS code, you can use our [online CSS compressor and optimizer](#) based on csstidy. If you want to create a linear or radial gradient as background or border, check our [CSS Gradient Generator](#).

Hey! You found this booklet interesting? Support Converting Colors with the new Membership Option!

The pro membership hides all ads, plus gives you double the colors in the color bucket, and more awesome pro features!

[Learn more, Memberships starting at \\$2.50/m!](#)

**Follow me
on Twitter!**

@ConvertingColor