

Converting Colors

$Yxy(33.9013, 0.3765, 0.3706)$

Have a look what the booklet for
Yxy(33.9013, 0.3765, 0.3706)
contains.

Yxy(34.0520, 0.3762, 0.3712)	3
Conversions	4
Details	6
Harmonies	12
Previews	24
Color Blindness Simulation	27
CSS Examples	30

Color

Yxy(34.0520, 0.3762, 0.3712)

Conversions

Conversions Part 1

Format	Color
Hex	B8987A
RGB	184, 152, 122
RGB Percent	72%, 60%, 48%
CMY	0.2784, 0.4039, 0.5215
CMYK	0.00, 0.17, 0.34, 0.28
HSL	29°, 30%, 60%
HSV	29°, 34%, 72%
XYZ	34.5107, 34.0520, 23.1722
YIQ	158.1480, 28.7020, -2.5460

Conversions

Conversions Part 2

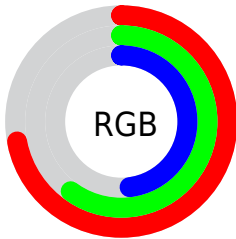
Format	Color
RYB	184, 180, 122
Decimal	12097658
CIELab	65.00, 7.55, 20.25
CIELCh	65, 21.615, 69.557
Yxy	34.0520, 0.3762, 0.3712
Android (android.graphics.Color)	4290287738 (0xFFB8987A)
YUV	158.1480, -17.8210, 22.6722
Hunter-Lab	58.3541, 3.4454, 17.3040

Details

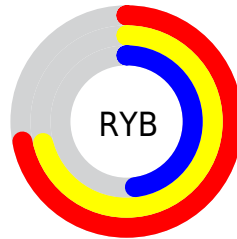
The Yxy color **34.0520, 0.3762, 0.3712** is a light color, and the websafe version is hex **CC9966**. A complement of this color would be **30.7206, 0.2597, 0.2825**, and the grayscale version is **34.3371, 0.3127, 0.3290**.

A 20% lighter version of the original color is **65.9385, 0.3635, 0.3626**, and **14.5342, 0.3973, 0.3834** is the 20% darker color. If you saturate the color by 10%, you get **30.6779, 0.4004, 0.3839**, and if you desaturate by 10%, it is **37.7627, 0.3544, 0.3582**.

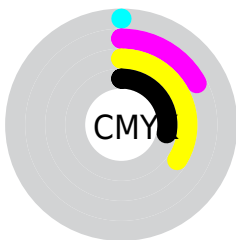
Distribution



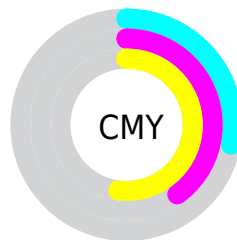
- Red (72%)
- Green (60%)
- Blue (48%)



- Red (72%)
- Yellow (71%)
- Blue (48%)



- Cyan (0%)
- Magenta (17%)
- Yellow (34%)
- Black (28%)





- Cyan (28%)
- Magenta (40%)
- Yellow (52%)

Brightness & Saturation Gradients


These gradients show how the Yxy color 34.0520, 0.3762, 0.3712 changes by changing the brightness by 10 percent. The first figure shows a shift by +10% for each color and the second figure -10%.


Similar to the brightness gradients but the following saturation gradients show a change of the Yxy color 34.0520, 0.3762, 0.3712 by changing the saturation by 10% instead.

 34.0520, 0.3762,
0.3712


 34.0520, 0.3762,
0.3712


320.3639, 0.3427,
0.3497

 22.9335, 0.3851,
0.3766


 66.0145, 0.3636,
0.3633

 14.5444, 0.3968,
0.3835


 87.6274, 0.3590,
0.3604

 8.5003, 0.4128,
0.3924


 113.5072, 0.3552,
0.3579

 4.4167, 0.4357,
0.4044

144.0383, 0.3519,
0.3558

 1.9093, 0.4818,
0.4298

179.6051, 0.3491,
0.3540

 0.5540, 0.5620,
0.4380

220.5921, 0.3467,

 0.0000, 0.0000,

0.3524

0.0000

267.3835, 0.3446,
0.3510

■ 34.0520, 0.3762,
0.3712

■ 34.0520, 0.3762,
0.3712

■ 30.6779, 0.4004,
0.3839

■ 37.7627, 0.3544,
0.3582

■ 27.6251, 0.4268,
0.3956

■ 41.8154, 0.3352,
0.3455

■ 24.8838, 0.4546,
0.4052

■ 46.2212, 0.3184,
0.3333

■ 22.4417, 0.4826,
0.4114

■ 50.9892, 0.3037,
0.3219

■ 20.2854, 0.5091,
0.4130

■ 56.1284, 0.2909,
0.3113

■ 18.3999, 0.5322,
0.4093

■ 61.6470, 0.2798,
0.3016

■ 17.3352, 0.5455,
0.4051

■ 67.5532, 0.2702,
0.2927

■ 72.9045, 0.2690,
0.2992

■ 78.2772, 0.2701,
0.3098

Harmonies

Analogous

The Analogous color harmony consists of three colors that are next to each other on the color wheel.



34.0520, 0.3782, 0.3459



34.0520, 0.3762, 0.3712



34.0520, 0.3566, 0.3870

Triad

The Triadic color harmony groups three colors that are evenly spaced from another and form a triangle on the color wheel.



34.0520, 0.3762, 0.3712



34.0520, 0.2657, 0.3376



34.0520, 0.2970, 0.2782

Complementary

The Complementary color scheme is a pair of colors which are on the opposite of each other on the color wheel.



34.0520, 0.3762, 0.3712



30.7206, 0.2597, 0.2825

Split Complementary

Split-complementary colors differ from the complementary color scheme. The scheme consists of three colors, the original color and two neighbors of the complement color.



34.0520, 0.2687, 0.2742



34.0520, 0.3762, 0.3712



34.0520, 0.2514, 0.3063

Square

The Square scheme is like the rectangle color scheme, but the four colors are evenly spaced on the color wheel.



34.0520, 0.3762, 0.3712



34.0520, 0.2925, 0.3682



34.0520, 0.2525, 0.2837



34.0520, 0.3310, 0.2940

Rectangle

The Rectangle color scheme consists of four colors that form a rectangle on the color wheel.



34.0520, 0.3762, 0.3712



34.0520, 0.3368, 0.3889



34.0520, 0.2525, 0.2837



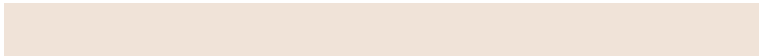
34.0520, 0.2865, 0.2754

Sweetspot

The Sweet Spot groups the original color and five complimentary colors.



34.0536, 0.3762, 0.3712



78.5317, 0.3290, 0.3411



26.4501, 0.3502, 0.2844



16.6940, 0.3314, 0.3428



93.3107, 0.3127, 0.3290



18.7317, 0.3127, 0.3290

Same Dimension

The Same Dimension uses a secret algorithm to generate beautiful new colors.



34.0536, 0.3762, 0.3712



57.3909, 0.3929, 0.3802



45.4538, 0.3631, 0.4105



9.7098, 0.3276, 0.3401



12.0866, 0.5435, 0.4066



0.5501, 0.5034, 0.4385

Inverse Universe

The Inverse Universe completely reimagines the original color for something new.



30.7206, 0.2597, 0.2825



50.4718, 0.2485, 0.2710



21.7792, 0.2533, 0.2321



9.4658, 0.2985, 0.3177



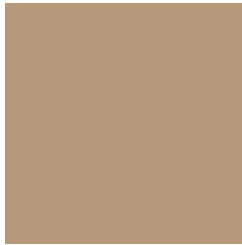
8.1693, 0.1793, 0.1654



0.4113, 0.1920, 0.2113

Previews

White Background



This preview shows how the Yxy color 34.0520, 0.3762, 0.3712 looks on a white background.

Color Contrast Check

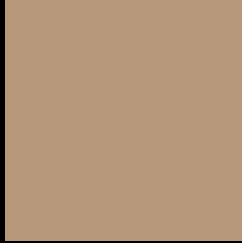
Large Text (above 18pt) WCAG AA × Fail

Any Text WCAG AA × Fail

Large Text (above 18pt) WCAG AAA × Fail

Any Text WCAG AAA × Fail

Black Background



This preview shows how the Yxy color 34.0520, 0.3762, 0.3712 looks on a black background.

Color Contrast Check

Large Text (above 18pt) WCAG AA ✓ Pass

Any Text WCAG AA ✓ Pass

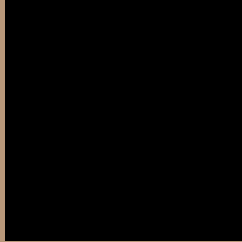
Large Text (above 18pt) WCAG AAA ✓ Pass

Any Text WCAG AAA ✓ Pass

If you want to check with other color combinations, try the [Color Contrast Checker](#).

Yxy 34.0520, 0.3762, 0.3712

Background



This preview shows how black text looks on a background with the Yxy color 34.0520, 0.3762, 0.3712.



This preview shows how white text looks on a background with the Yxy color 34.0520, 0.3762, 0.3712.

Color Blindness Simulation

Color vision deficiency is a very complex topic, and I could not describe the different causes any better than Wikipedia does, so if you want to learn more, you should check out their [article about color blindness](#).

Dichromacy



Original Color

34.0520, 0.3762, 0.3712

Protanopia

34.2592, 0.3538, 0.3779

Deuteranopia

34.1759, 0.3773, 0.3711



Tritanopia

34.0274, 0.3448, 0.3141

Trichromacy



Original Color

34.0520, 0.3762, 0.3712

Protanomaly

34.2308, 0.3618, 0.3755

Deuteranomaly

34.1759, 0.3773, 0.3711

Tritanomaly

34.1040, 0.3567, 0.3346

Monochromacy



Original Color

34.0520, 0.3762, 0.3712

Achromatopsia

34.1914, 0.3127, 0.3290

Achromatomaly

34.0368, 0.3341, 0.3452

CSS Examples

Text

The CSS property to change the color of the text to Yxy 34.0520, 0.3762, 0.3712 is called "color". The color property can be set on classes, ids or directly on the HTML element.

This example shows how text in the color `rgb(184, 152, 122)` looks like.

```
.text, #text, p{  
    color:rgb(184, 152, 122)  
}
```

If you want to add a text shadow in that color use the text-shadow property, you can generate a text shadow directly with our [CSS Text Shadow Generator](#).

Here you see how black text with a 4 pixel rgb(184, 152, 122) colored shadow looks like.

```
.shadow{ text-shadow: 4px 4px 2px rgb(184, 152, 122) }
```

Border

The CSS property to change the border of an element to Yxy 34.0520, 0.3762, 0.3712 is called "border". The border property can be set on classes, ids or directly on the HTML element.

This example shows the color as border, it can be applied via the CSS property "border" or "border-color".

```
.border, #border, table{ border:4px solid rgb(184, 152, 122) }
```

If only the border color should be changed use the property `border-color`.

```
.border{ border-color:rgb(184, 152, 122) }
```

If you want to add a box shadow in that color use:

Here you see how a box with a 4 pixel `rgb(184, 152, 122)` colored shadow looks like.

```
.boxshadow{ -moz-box-shadow:4px 4px 4px  
4px rgb(184, 152, 122); -webkit-box-  
shadow:4px 4px 4px 4px rgb(184, 152, 122);  
box-shadow:4px 4px 4px 4px rgb(184, 152,  
122) }
```


Background

The CSS property to change the background color of an element to Yxy 34.0520, 0.3762, 0.3712 is called "background". The background property can be set on classes, ids or directly on the HTML element.

```
.background, #background, body{  
background: rgb(184, 152, 122) }
```

If only the background color should be changed can be used:

```
.background{ background-color: rgb(184,  
152, 122) }
```

This example shows the color as background, it is applied via the CSS property "background".

To optimize and compress your CSS code, you can use our [online CSS compressor and optimizer](#) based on csstidy. If you want to create a linear or radial gradient as background or border, check our [CSS Gradient Generator](#).

Hey! You found this booklet interesting? Support Converting Colors with the new Membership Option!

The pro membership hides all ads, plus gives you double the colors in the color bucket, and more awesome pro features!

[Learn more, Memberships starting at \\$2.50/m!](#)

**Follow me
on Twitter!**

@ConvertingColor