

Converting Colors

$Yxy(34.1482, 0.3518, 0.3535)$

Have a look what the booklet for
Yxy(34.1482, 0.3518, 0.3535)
contains.

Yxy(34.1475, 0.3517, 0.3535)	3
Conversions	4
Details	6
Harmonies	12
Previews	24
Color Blindness Simulation	27
CSS Examples	30

Color

Yxy(34.1475, 0.3517, 0.3535)

Conversions

Conversions Part 1

Format	Color
Hex	B09A89
RGB	176, 154, 137
RGB Percent	69%, 60%, 54%
CMY	0.3099, 0.3960, 0.4626
CMYK	0.00, 0.12, 0.22, 0.31
HSL	26°, 20%, 61%
HSV	26°, 22%, 69%
XYZ	33.9736, 34.1475, 28.4772
YIQ	158.6400, 18.5690, -0.6230

Conversions

Conversions Part 2

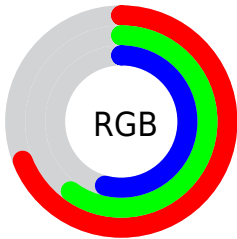
Format	Color
RYB	176, 167, 137
Decimal	11573897
CIELab	65.08, 5.36, 11.89
CIELCh	65, 13.045, 65.720
Yxy	34.1475, 0.3517, 0.3535
Android (android.graphics.Color)	4289763977 (0xFFB09A89)
YUV	158.6400, -10.6685, 15.2247
Hunter-Lab	58.4359, 1.5141, 12.0117

Details

The Yxy color **34.1475, 0.3517, 0.3535** is a light color, and the websafe version is hex **999999**. A complement of this color would be **33.2502, 0.2786, 0.3032**, and the grayscale version is **34.5420, 0.3127, 0.3290**.

A 20% lighter version of the original color is **65.9853, 0.3444, 0.3489**, and **14.5996, 0.3649, 0.3614** is the 20% darker color. If you saturate the color by 10%, you get **30.5419, 0.3736, 0.3652**, and if you desaturate by 10%, it is **38.1096, 0.3326, 0.3421**.

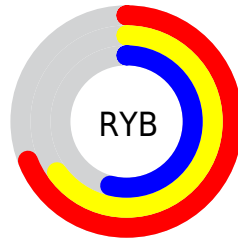
Distribution



Red (69%)

Green (60%)

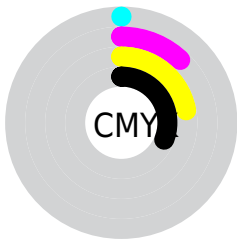
Blue (54%)



Red (69%)

Yellow (65%)

Blue (54%)

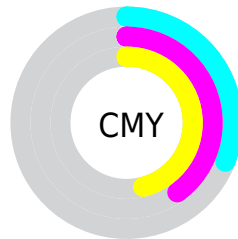


Cyan (0%)

Magenta (12%)

Yellow (22%)

Black (31%)



Cyan (31%)


Magenta (40%)


Yellow (46%)

Brightness & Saturation Gradients


These gradients show how the Yxy color 34.1475, 0.3517, 0.3535 changes by changing the brightness by 10 percent. The first figure shows a shift by +10% for each color and the second figure -10%.


Similar to the brightness gradients but the following saturation gradients show a change of the Yxy color 34.1475, 0.3517, 0.3535 by changing the saturation by 10% instead.


 34.1475, 0.3517,
0.3535

 34.1475, 0.3517,
0.3535


320.7892, 0.3311,
0.3409


 23.0069, 0.3572,
0.3568

 66.1630, 0.3439,
0.3488

 14.5986, 0.3646,
0.3610


 87.8067, 0.3411,
0.3471

 8.5382, 0.3747,
0.3668


 113.7202, 0.3387,
0.3456

 4.4412, 0.3898,
0.3750

144.2880, 0.3367,
0.3444

 1.9233, 0.4141,
0.3873

179.8944, 0.3350,
0.3433

 0.5623, 0.5420,
0.4580

220.9238, 0.3335,

 0.0000, 0.0000,

0.3424

0.0000

267.7606, 0.3322,
0.3416

■ 34.1475, 0.3517,
0.3535

■ 34.1475, 0.3517,
0.3535

■ 30.5419, 0.3736,
0.3652

■ 38.1096, 0.3326,
0.3421

■ 27.2775, 0.3984,
0.3768

■ 42.4335, 0.3160,
0.3312

■ 24.3450, 0.4258,
0.3876

■ 47.1304, 0.3016,
0.3211

■ 21.7324, 0.4552,
0.3964

■ 52.2094, 0.2892,
0.3117

■ 19.4271, 0.4854,
0.4023

■ 57.6794, 0.2786,
0.3032

■ 17.4154, 0.5146,
0.4038

■ 63.5490, 0.2693,
0.2953

■ 15.6820, 0.5407,
0.4001

■ 69.4860, 0.2639,
0.2936

■ 14.4966, 0.5588,
0.3945

■ 74.9620, 0.2653,
0.3050

■ 80.7545, 0.2666,
0.3161

Harmonies

Analogous

The Analogous color harmony consists of three colors that are next to each other on the color wheel.



34.1475, 0.3512, 0.3378



34.1475, 0.3517, 0.3535



34.1475, 0.3414, 0.3633

Triad

The Triadic color harmony groups three colors that are evenly spaced from another and form a triangle on the color wheel.



34.1475, 0.3517, 0.3535



34.1475, 0.2859, 0.3369



34.1475, 0.3009, 0.2968

Complementary

The Complementary color scheme is a pair of colors which are on the opposite of each other on the color wheel.



34.1475, 0.3517, 0.3535



33.2502, 0.2786, 0.3032

Split Complementary

Split-complementary colors differ from the complementary color scheme. The scheme consists of three colors, the original color and two neighbors of the complement color.



34.1475, 0.2842, 0.2957



34.1475, 0.3517, 0.3535



34.1475, 0.2757, 0.3181

Square

The Square scheme is like the rectangle color scheme, but the four colors are evenly spaced on the color wheel.



34.1475, 0.3517, 0.3535



34.1475, 0.3033, 0.3540



34.1475, 0.2751, 0.3032



34.1475, 0.3214, 0.3058

Rectangle

The Rectangle color scheme consists of four colors that form a rectangle on the color wheel.



34.1475, 0.3517, 0.3535



34.1475, 0.3301, 0.3647



34.1475, 0.2751, 0.3032



34.1475, 0.2947, 0.2955

Sweetspot

The Sweet Spot groups the original color and five complimentary colors.



34.1490, 0.3517, 0.3535



72.9836, 0.3239, 0.3366



29.6336, 0.3326, 0.2976



15.7193, 0.3249, 0.3372



89.0005, 0.3127, 0.3290



17.0645, 0.3127, 0.3290

Same Dimension

The Same Dimension uses a secret algorithm to generate beautiful new colors.



34.1490, 0.3517, 0.3535



58.3788, 0.3630, 0.3598



41.0692, 0.3462, 0.3798



9.0945, 0.3277, 0.3390



10.7513, 0.5570, 0.3959



0.4551, 0.5093, 0.4338

Inverse Universe

The Inverse Universe completely reimagines the original color for something new.



33.2502, 0.2786, 0.3032



56.4283, 0.2702, 0.2961



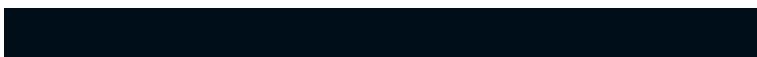
27.1010, 0.2764, 0.2726



8.9988, 0.2985, 0.3188



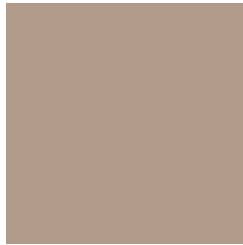
9.0031, 0.1839, 0.1819



0.3968, 0.1965, 0.2272

Previews

White Background



This preview shows how the Yxy color 34.1475, 0.3517, 0.3535 looks on a white background.

Color Contrast Check

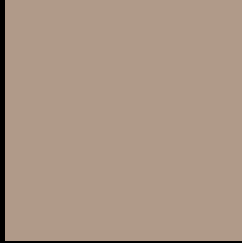
Large Text (above 18pt) WCAG AA × Fail

Any Text WCAG AA × Fail

Large Text (above 18pt) WCAG AAA × Fail

Any Text WCAG AAA × Fail

Black Background



This preview shows how the Yxy color 34.1475, 0.3517, 0.3535 looks on a black background.

Color Contrast Check

Large Text (above 18pt) WCAG AA ✓ Pass

Any Text WCAG AA ✓ Pass

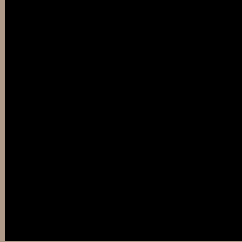
Large Text (above 18pt) WCAG AAA ✓ Pass

Any Text WCAG AAA ✓ Pass

If you want to check with other color combinations, try the [Color Contrast Checker](#).

Yxy 34.1475, 0.3517, 0.3535

Background



This preview shows how black text looks on a background with the Yxy color 34.1475, 0.3517, 0.3535.



This preview shows how white text looks on a background with the Yxy color 34.1475, 0.3517, 0.3535.

Color Blindness Simulation

Color vision deficiency is a very complex topic, and I could not describe the different causes any better than Wikipedia does, so if you want to learn more, you should check out their [article about color blindness](#).

Dichromacy



Original Color

34.1475, 0.3517, 0.3535

Protanopia

34.3171, 0.3373, 0.3572

Deuteranopia

34.0864, 0.3577, 0.3503



Tritanopia

34.0050, 0.3308, 0.3123

Trichromacy



Original Color

34.1475, 0.3517, 0.3535

Protanomaly

34.3839, 0.3426, 0.3569

Deuteranomaly

34.1723, 0.3552, 0.3519

Tritanomaly

33.8981, 0.3386, 0.3263

Monochromacy



Original Color

34.1475, 0.3517, 0.3535

Achromatopsia

34.6704, 0.3127, 0.3290

Achromatomaly

34.3476, 0.3262, 0.3378

CSS Examples

Text

The CSS property to change the color of the text to Yxy 34.1475, 0.3517, 0.3535 is called "color". The color property can be set on classes, ids or directly on the HTML element.

This example shows how text in the color `rgb(176, 154, 137)` looks like.

```
.text, #text, p{  
    color:rgb(176, 154, 137)  
}
```

If you want to add a text shadow in that color use the text-shadow property, you can generate a text shadow directly with our [CSS Text Shadow Generator](#).

Here you see how black text with a 4 pixel rgb(176, 154, 137) colored shadow looks like.

```
.shadow{ text-shadow: 4px 4px 2px rgb(176, 154, 137) }
```

Border

The CSS property to change the border of an element to Yxy 34.1475, 0.3517, 0.3535 is called "border". The border property can be set on classes, ids or directly on the HTML element.

This example shows the color as border, it can be applied via the CSS property "border" or "border-color".

```
.border, #border, table{ border:4px solid rgb(176, 154, 137) }
```

If only the border color should be changed use the property `border-color`.

```
.border{ border-color:rgb(176, 154, 137) }
```

If you want to add a box shadow in that color use:

Here you see how a box with a 4 pixel `rgb(176, 154, 137)` colored shadow looks like.

```
.boxshadow{ -moz-box-shadow:4px 4px 4px  
4px rgb(176, 154, 137); -webkit-box-  
shadow:4px 4px 4px 4px rgb(176, 154, 137);  
box-shadow:4px 4px 4px 4px rgb(176, 154,  
137) }
```


Background

The CSS property to change the background color of an element to Yxy 34.1475, 0.3517, 0.3535 is called "background". The background property can be set on classes, ids or directly on the HTML element.

```
.background, #background, body{  
background: rgb(176, 154, 137) }
```

If only the background color should be changed can be used:

```
.background{ background-color: rgb(176,  
154, 137) }
```

This example shows the color as background, it is applied via the CSS property "background".

To optimize and compress your CSS code, you can use our [online CSS compressor and optimizer](#) based on csstidy. If you want to create a linear or radial gradient as background or border, check our [CSS Gradient Generator](#).

Hey! You found this booklet interesting? Support Converting Colors with the new Membership Option!

The pro membership hides all ads, plus gives you double the colors in the color bucket, and more awesome pro features!

[Learn more, Memberships starting at \\$2.50/m!](#)

**Follow me
on Twitter!**

@ConvertingColor