

Converting Colors

Yxy(34.4708, 0.3654, 0.3689)

Have a look what the booklet for
Yxy(34.4708, 0.3654, 0.3689)
contains.

Yxy(34.5587, 0.3646, 0.3690)	3
<i>Conversions</i>	4
<i>Details</i>	6
<i>Harmonies</i>	12
<i>Previews</i>	24
<i>Color Blindness Simulation</i>	27
<i>CSS Examples</i>	30

Color

Yxy(34.5587, 0.3646, 0.3690)

Conversions

Conversions Part 1

Format	Color
Hex	B39B7F
RGB	179, 155, 127
RGB Percent	70%, 61%, 50%
CMY	0.2979, 0.3922, 0.5020
CMYK	0.00, 0.13, 0.29, 0.30
HSL	32°, 26%, 60%
HSV	32°, 29%, 70%
XYZ	34.1466, 34.5587, 24.9497
YIQ	158.9840, 23.2920, -3.6200

Conversions

Conversions Part 2

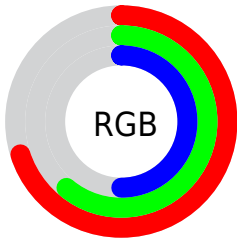
Format	Color
RYB	172, 179, 127
Decimal	11770751
CIELab	65.40, 4.57, 17.97
CIELCh	65, 18.537, 75.734
Yxy	34.5587, 0.3646, 0.3690
Android (android.graphics.Color)	4289960831 (0xFFB39B7F)
YUV	158.9840, -15.7681, 17.5540
Hunter-Lab	58.7866, 0.8063, 15.9873

Details

The Yxy color **34.5587, 0.3646, 0.3690** is a light color, and the websafe version is hex **999966**. A complement of this color would be **29.9107, 0.2667, 0.2853**, and the grayscale version is **34.7306, 0.3127, 0.3290**.

A 20% lighter version of the original color is **66.5584, 0.3540, 0.3609**, and **14.8107, 0.3802, 0.3809** is the 20% darker color. If you saturate the color by 10%, you get **31.4755, 0.3866, 0.3833**, and if you desaturate by 10%, it is **37.9165, 0.3447, 0.3547**.

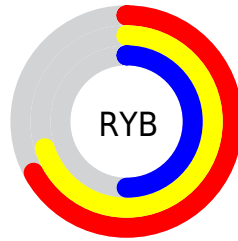
Distribution



Red (70%)

Green (61%)

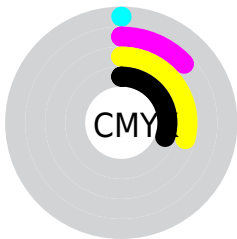
Blue (50%)



Red (67%)

Yellow (70%)

Blue (50%)

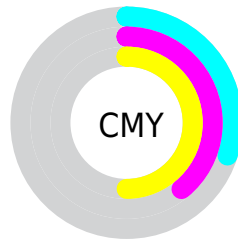


Cyan (0%)

Magenta (13%)

Yellow (29%)

Black (30%)



Cyan (30%)


Magenta (39%)


Yellow (50%)

Brightness & Saturation Gradients


These gradients show how the Yxy color 34.5587, 0.3646, 0.3690 changes by changing the brightness by 10 percent. The first figure shows a shift by +10% for each color and the second figure -10%.


Similar to the brightness gradients but the following saturation gradients show a change of the Yxy color 34.5587, 0.3646, 0.3690 by changing the saturation by 10% instead.


 34.5587, 0.3646,
0.3690

 34.5587, 0.3646,
0.3690


322.6161, 0.3373,
0.3484


 23.3231, 0.3718,
0.3743


 66.8016, 0.3544,
0.3614

 14.8323, 0.3813,
0.3811


 88.5776, 0.3506,
0.3586

 8.7018, 0.3944,
0.3903


 114.6360, 0.3475,
0.3562

 4.5472, 0.4132,
0.4030

145.3611, 0.3448,
0.3542

 1.9841, 0.4463,
0.4250

181.1372, 0.3426,
0.3524

 0.5982, 0.5320,
0.4680

222.3489, 0.3406,

 0.0000, 0.0000,

0.3509

0.0000

269.3804, 0.3389,
0.3496

■ 34.5587, 0.3646,
0.3690

■ 34.5587, 0.3646,
0.3690

■ 31.4755, 0.3866,
0.3833

■ 37.9165, 0.3447,
0.3547

■ 28.6541, 0.4106,
0.3968

■ 41.5518, 0.3270,
0.3409

■ 26.0873, 0.4358,
0.4087

■ 45.4736, 0.3113,
0.3278

■ 23.7658, 0.4614,
0.4178

■ 49.6889, 0.2976,
0.3156

■ 21.6795, 0.4861,
0.4230

■ 54.2044, 0.2855,
0.3042

■ 19.8170, 0.5083,
0.4231

■ 59.0267, 0.2750,
0.2938

■ 18.1608, 0.5274,
0.4185

■ 64.1619, 0.2657,
0.2842

■ 18.0138, 0.5292,
0.4180

■ 68.5967, 0.2654,
0.2910

■ 73.0751, 0.2664,
0.3005

Harmonies

Analogous

The Analogous color harmony consists of three colors that are next to each other on the color wheel.



34.5587, 0.3695, 0.3487



34.5587, 0.3646, 0.3690



34.5587, 0.3455, 0.3796

Triad

The Triadic color harmony groups three colors that are evenly spaced from another and form a triangle on the color wheel.



34.5587, 0.3646, 0.3690



34.5587, 0.2689, 0.3308



34.5587, 0.3052, 0.2873

Complementary

The Complementary color scheme is a pair of colors which are on the opposite of each other on the color wheel.



34.5587, 0.3646, 0.3690



29.9107, 0.2667, 0.2853

Split Complementary

Split-complementary colors differ from the complementary color scheme. The scheme consists of three colors, the original color and two neighbors of the complement color.



34.5587, 0.2793, 0.2816



34.5587, 0.3646, 0.3690



34.5587, 0.2591, 0.3052

Square

The Square scheme is like the rectangle color scheme, but the four colors are evenly spaced on the color wheel.



34.5587, 0.3646, 0.3690



34.5587, 0.2902, 0.3574



34.5587, 0.2629, 0.2876



34.5587, 0.3343, 0.3028

Rectangle

The Rectangle color scheme consists of four colors that form a rectangle on the color wheel.



34.5587, 0.3646, 0.3690



34.5587, 0.3277, 0.3788



34.5587, 0.2629, 0.2876



34.5587, 0.2959, 0.2842

Sweetspot

The Sweet Spot groups the original color and five complimentary colors.



34.5603, 0.3646, 0.3690



74.3330, 0.3271, 0.3410



27.0093, 0.3466, 0.2944



16.2536, 0.3296, 0.3430



91.1408, 0.3127, 0.3290



17.8868, 0.3127, 0.3290

Same Dimension

The Same Dimension uses a secret algorithm to generate beautiful new colors.



34.5603, 0.3646, 0.3690



58.2162, 0.3788, 0.3784



43.1633, 0.3542, 0.4007



9.2374, 0.3274, 0.3413



12.8571, 0.5276, 0.4193



0.5197, 0.4898, 0.4493

Inverse Universe

The Inverse Universe completely reimagines the original color for something new.



29.9107, 0.2667, 0.2853



48.5065, 0.2560, 0.2737



23.0814, 0.2642, 0.2465



8.8554, 0.2985, 0.3164



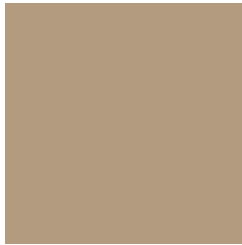
6.7642, 0.1744, 0.1478



0.3300, 0.1894, 0.2018

Previews

White Background



This preview shows how the Yxy color 34.5587, 0.3646, 0.3690 looks on a white background.

Color Contrast Check

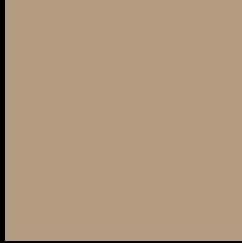
Large Text (above 18pt) WCAG AA × Fail

Any Text WCAG AA × Fail

Large Text (above 18pt) WCAG AAA × Fail

Any Text WCAG AAA × Fail

Black Background



This preview shows how the Yxy color 34.5587, 0.3646, 0.3690 looks on a black background.

Color Contrast Check

Large Text (above 18pt) WCAG AA ✓ Pass

Any Text WCAG AA ✓ Pass

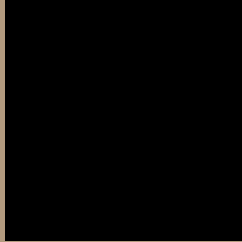
Large Text (above 18pt) WCAG AAA ✓ Pass

Any Text WCAG AAA ✓ Pass

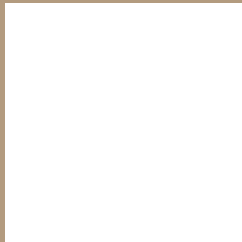
If you want to check with other color combinations, try the [Color Contrast Checker](#).

Yxy 34.5587, 0.3646, 0.3690

Background



This preview shows how black text looks on a background with the Yxy color 34.5587, 0.3646, 0.3690.



This preview shows how white text looks on a background with the Yxy color 34.5587, 0.3646, 0.3690.

Color Blindness Simulation

Color vision deficiency is a very complex topic, and I could not describe the different causes any better than Wikipedia does, so if you want to learn more, you should check out their [article about color blindness](#).

Dichromacy



Original Color

34.5587, 0.3646, 0.3690

Protanopia

34.7061, 0.3497, 0.3733

Deuteranopia

34.6291, 0.3718, 0.3654



Tritanopia

34.4886, 0.3349, 0.3126

Trichromacy



Original Color

34.5587, 0.3646, 0.3690

Protanomaly

34.7829, 0.3551, 0.3728

Deuteranomaly

34.7108, 0.3692, 0.3671

Tritanomaly

34.5715, 0.3465, 0.3333

Monochromacy



Original Color

34.5587, 0.3646, 0.3690

Achromatopsia

34.6704, 0.3127, 0.3290

Achromatomaly

34.6673, 0.3308, 0.3452

CSS Examples

Text

The CSS property to change the color of the text to Yxy 34.5587, 0.3646, 0.3690 is called "color". The color property can be set on classes, ids or directly on the HTML element.

This example shows how text in the color `rgb(179, 155, 127)` looks like.

```
.text, #text, p{  
    color:rgb(179, 155, 127)  
}
```

If you want to add a text shadow in that color use the text-shadow property, you can generate a text shadow directly with our [CSS Text Shadow Generator](#).

Here you see how black text with a 4 pixel rgb(179, 155, 127) colored shadow looks like.

```
.shadow{ text-shadow: 4px 4px 2px rgb(179, 155, 127) }
```

Border

The CSS property to change the border of an element to Yxy 34.5587, 0.3646, 0.3690 is called "border". The border property can be set on classes, ids or directly on the HTML element.

This example shows the color as border, it can be applied via the CSS property "border" or "border-color".

```
.border, #border, table{ border:4px solid rgb(179, 155, 127) }
```

If only the border color should be changed use the property `border-color`.

```
.border{ border-color:rgb(179, 155, 127) }
```

If you want to add a box shadow in that color use:

Here you see how a box with a 4 pixel `rgb(179, 155, 127)` colored shadow looks like.

```
.boxshadow{ -moz-box-shadow:4px 4px 4px  
4px rgb(179, 155, 127); -webkit-box-  
shadow:4px 4px 4px 4px rgb(179, 155, 127);  
box-shadow:4px 4px 4px 4px rgb(179, 155,  
127) }
```


Background

The CSS property to change the background color of an element to Yxy 34.5587, 0.3646, 0.3690 is called "background". The background property can be set on classes, ids or directly on the HTML element.

```
.background, #background, body{  
background: rgb(179, 155, 127) }
```

If only the background color should be changed can be used:

```
.background{ background-color: rgb(179,  
155, 127) }
```

This example shows the color as background, it is applied via the CSS property "background".

To optimize and compress your CSS code, you can use our [online CSS compressor and optimizer](#) based on csstidy. If you want to create a linear or radial gradient as background or border, check our [CSS Gradient Generator](#).

Hey! You found this booklet interesting? Support Converting Colors with the new Membership Option!

The pro membership hides all ads, plus gives you double the colors in the color bucket, and more awesome pro features!

[Learn more, Memberships starting at \\$2.50/m!](#)

**Follow me
on Twitter!**

@ConvertingColor