

Converting Colors

$Y_{xy}(35.4690, 0.3759, 0.3709)$

Have a look what the booklet for
Yxy(35.4690, 0.3759, 0.3709)
contains.

Yxy(35.4882, 0.3751, 0.3706)	3
<i>Conversions</i>	4
<i>Details</i>	6
<i>Harmonies</i>	12
<i>Previews</i>	24
<i>Color Blindness Simulation</i>	27
<i>CSS Examples</i>	30

Color

Yxy(35.4882, 0.3751, 0.3706)

Conversions

Conversions Part 1

Format	Color
Hex	BB9B7D
RGB	187, 155, 125
RGB Percent	73%, 61%, 49%
CMY	0.2666, 0.3922, 0.5099
CMYK	0.00, 0.17, 0.33, 0.27
HSL	29°, 31%, 61%
HSV	29°, 33%, 73%
XYZ	35.9191, 35.4882, 24.3515
YIQ	161.1480, 28.7020, -2.5460

Conversions

Conversions Part 2

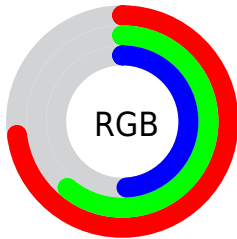
Format	Color
RYB	187, 183, 125
Decimal	12295037
CIELab	66.13, 7.50, 20.20
CIElCh	66, 21.545, 69.638
Yxy	35.4882, 0.3751, 0.3706
Android (android.graphics.Color)	4290485117 (0xFFBB9B7D)
YUV	161.1480, -17.8210, 22.6722
Hunter-Lab	59.5720, 3.3762, 17.4642

Details

The Yxy color **35.4882, 0.3751, 0.3706** is a light color, and the websafe version is hex **CC9966**. A complement of this color would be **32.0614, 0.2604, 0.2832**, and the grayscale version is **35.7884, 0.3127, 0.3290**.

A 20% lighter version of the original color is **68.0484, 0.3627, 0.3622**, and **15.4090, 0.3951, 0.3823** is the 20% darker color. If you saturate the color by 10%, you get **31.9705, 0.3992, 0.3834**, and if you desaturate by 10%, it is **39.3560, 0.3534, 0.3576**.

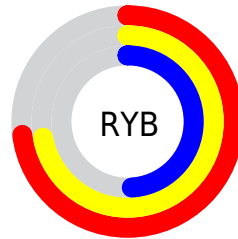
Distribution



Red (73%)

Green (61%)

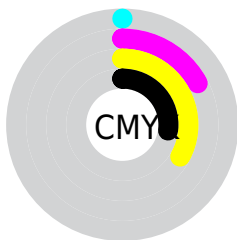
Blue (49%)



Red (73%)

Yellow (72%)

Blue (49%)

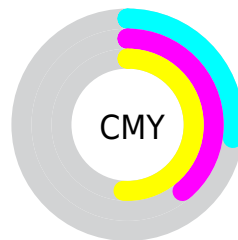


Cyan (0%)

Magenta (17%)

Yellow (33%)

Black (27%)



Cyan (27%)


Magenta (39%)


Yellow (51%)

Brightness & Saturation Gradients


These gradients show how the Yxy color 35.4882, 0.3751, 0.3706 changes by changing the brightness by 10 percent. The first figure shows a shift by +10% for each color and the second figure -10%.


Similar to the brightness gradients but the following saturation gradients show a change of the Yxy color 35.4882, 0.3751, 0.3706 by changing the saturation by 10% instead.


 35.4882, 0.3751,
0.3706


 35.4882, 0.3751,
0.3706


326.7180, 0.3424,
0.3495

 24.0392, 0.3837,
0.3758


 68.2414, 0.3629,
0.3629

 15.3627, 0.3950,
0.3825


 90.3143, 0.3584,
0.3601

 9.0743, 0.4103,
0.3912


 116.6974, 0.3546,
0.3576

 4.7897, 0.4322,
0.4028

147.7749, 0.3515,
0.3555

 2.1244, 0.4710,
0.4231

183.9314, 0.3487,
0.3537

 0.6783, 0.5496,
0.4504

225.5511, 0.3463,

 0.0000, 0.0000,

0.3522

0.0000

273.0185, 0.3442,
0.3508

■ 35.4882, 0.3751,
0.3706

■ 35.4882, 0.3751,
0.3706

■ 31.9705, 0.3992,
0.3834

■ 39.3560, 0.3534,
0.3576

■ 28.7870, 0.4256,
0.3951

■ 43.5795, 0.3343,
0.3448

■ 25.9276, 0.4533,
0.4048

■ 48.1703, 0.3176,
0.3327

■ 23.3795, 0.4814,
0.4112

■ 53.1377, 0.3030,
0.3213

■ 21.1290, 0.5080,
0.4131

■ 58.4911, 0.2903,
0.3108

■ 19.1605, 0.5313,
0.4096

■ 64.2390, 0.2793,
0.3011

■ 17.9631, 0.5456,
0.4050

■ 70.3323, 0.2702,
0.2931

■ 75.6251, 0.2712,
0.3040

■ 81.2165, 0.2723,
0.3147

Harmonies

Analogous

The Analogous color harmony consists of three colors that are next to each other on the color wheel.



35.4882, 0.3771, 0.3458



35.4882, 0.3751, 0.3706



35.4882, 0.3558, 0.3860

Triad

The Triadic color harmony groups three colors that are evenly spaced from another and form a triangle on the color wheel.



35.4882, 0.3751, 0.3706



35.4882, 0.2664, 0.3374



35.4882, 0.2973, 0.2790

Complementary

The Complementary color scheme is a pair of colors which are on the opposite of each other on the color wheel.



35.4882, 0.3751, 0.3706



32.0614, 0.2604, 0.2832

Split Complementary

Split-complementary colors differ from the complementary color scheme. The scheme consists of three colors, the original color and two neighbors of the complement color.



35.4882, 0.2695, 0.2750



35.4882, 0.3751, 0.3706



35.4882, 0.2524, 0.3067

Square

The Square scheme is like the rectangle color scheme, but the four colors are evenly spaced on the color wheel.



35.4882, 0.3751, 0.3706



35.4882, 0.2928, 0.3674



35.4882, 0.2535, 0.2844



35.4882, 0.3308, 0.2947

Rectangle

The Rectangle color scheme consists of four colors that form a rectangle on the color wheel.



35.4882, 0.3751, 0.3706



35.4882, 0.3363, 0.3878



35.4882, 0.2535, 0.2844



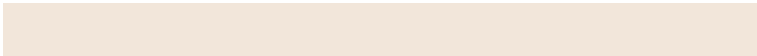
35.4882, 0.2870, 0.2763

Sweetspot

The Sweet Spot groups the original color and five complimentary colors.



35.4898, 0.3751, 0.3706



80.4375, 0.3290, 0.3411



27.6649, 0.3495, 0.2851



17.4637, 0.3315, 0.3429



95.5105, 0.3127, 0.3290



19.5994, 0.3127, 0.3290

Same Dimension

The Same Dimension uses a secret algorithm to generate beautiful new colors.



35.4898, 0.3751, 0.3706



58.7799, 0.3929, 0.3802



47.1596, 0.3624, 0.4093



10.2777, 0.3277, 0.3401



12.5172, 0.5437, 0.4065



0.6213, 0.5063, 0.4362

Inverse Universe

The Inverse Universe completely reimagines the original color for something new.



32.0614, 0.2604, 0.2832



51.6707, 0.2485, 0.2709



22.8723, 0.2543, 0.2337



10.0178, 0.2984, 0.3176



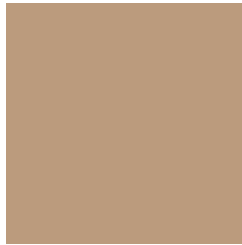
8.4466, 0.1792, 0.1651



0.4613, 0.1910, 0.2077

Previews

White Background



This preview shows how the Yxy color 35.4882, 0.3751, 0.3706 looks on a white background.

Color Contrast Check

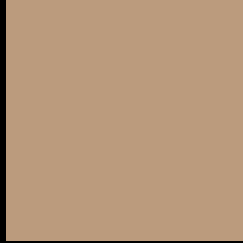
Large Text (above 18pt) WCAG AA × Fail

Any Text WCAG AA × Fail

Large Text (above 18pt) WCAG AAA × Fail

Any Text WCAG AAA × Fail

Black Background



This preview shows how the Yxy color 35.4882, 0.3751, 0.3706 looks on a black background.

Color Contrast Check

Large Text (above 18pt) WCAG AA ✓ Pass

Any Text WCAG AA ✓ Pass

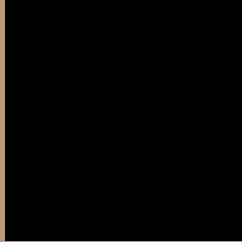
Large Text (above 18pt) WCAG AAA ✓ Pass

Any Text WCAG AAA ✓ Pass

If you want to check with other color combinations, try the [Color Contrast Checker](#).

Yxy 35.4882, 0.3751, 0.3706

Background



This preview shows how black text looks on a background with the Yxy color 35.4882, 0.3751, 0.3706.



This preview shows how white text looks on a background with the Yxy color 35.4882, 0.3751, 0.3706.

Color Blindness Simulation

Color vision deficiency is a very complex topic, and I could not describe the different causes any better than Wikipedia does, so if you want to learn more, you should check out their [article about color blindness](#).

Dichromacy



Original Color

35.4882, 0.3751, 0.3706

Protanopia

35.7062, 0.3531, 0.3771

Deuteranopia

35.2832, 0.3766, 0.3691



Tritanopia

35.4977, 0.3432, 0.3130

Trichromacy



Original Color

35.4882, 0.3751, 0.3706

Protanomaly

35.6757, 0.3610, 0.3748

Deuteranomaly

35.2832, 0.3766, 0.3691

Tritanomaly

35.5735, 0.3549, 0.3332

Monochromacy



Original Color

35.4882, 0.3751, 0.3706

Achromatopsia

35.6400, 0.3127, 0.3290

Achromatomaly

35.4804, 0.3337, 0.3449

CSS Examples

Text

The CSS property to change the color of the text to Yxy 35.4882, 0.3751, 0.3706 is called "color". The color property can be set on classes, ids or directly on the HTML element.

This example shows how text in the color `rgb(187, 155, 125)` looks like.

```
.text, #text, p{  
    color:rgb(187, 155, 125)  
}
```

If you want to add a text shadow in that color use the text-shadow property, you can generate a text shadow directly with our [CSS Text Shadow Generator](#).

Here you see how black text with a 4 pixel rgb(187, 155, 125) colored shadow looks like.

```
.shadow{ text-shadow: 4px 4px 2px rgb(187, 155, 125) }
```

Border

The CSS property to change the border of an element to Yxy 35.4882, 0.3751, 0.3706 is called "border". The border property can be set on classes, ids or directly on the HTML element.

This example shows the color as border, it can be applied via the CSS property "border" or "border-color".

```
.border, #border, table{ border:4px solid rgb(187, 155, 125) }
```

If only the border color should be changed use the property `border-color`.

```
.border{ border-color:rgb(187, 155, 125) }
```

If you want to add a box shadow in that color use:

Here you see how a box with a 4 pixel `rgb(187, 155, 125)` colored shadow looks like.

```
.boxshadow{ -moz-box-shadow:4px 4px 4px  
4px rgb(187, 155, 125); -webkit-box-  
shadow:4px 4px 4px 4px rgb(187, 155, 125);  
box-shadow:4px 4px 4px 4px rgb(187, 155,  
125) }
```


Background

The CSS property to change the background color of an element to Yxy 35.4882, 0.3751, 0.3706 is called "background". The background property can be set on classes, ids or directly on the HTML element.

```
.background, #background, body{  
background: rgb(187, 155, 125) }
```

If only the background color should be changed can be used:

```
.background{ background-color: rgb(187,  
155, 125) }
```

This example shows the color as background, it is applied via the CSS property "background".

To optimize and compress your CSS code, you can use our [online CSS compressor and optimizer](#) based on csstidy. If you want to create a linear or radial gradient as background or border, check our [CSS Gradient Generator](#).

Hey! You found this booklet interesting? Support Converting Colors with the new Membership Option!

The pro membership hides all ads, plus gives you double the colors in the color bucket, and more awesome pro features!

[Learn more, Memberships starting at \\$2.50/m!](#)

**Follow me
on Twitter!**

@ConvertingColor