

# Converting Colors

$Yxy(35.7574, 0.3726, 0.3371)$

Have a look what the booklet for  
Yxy(35.7574, 0.3726, 0.3371)  
contains.

<b>Yxy(35.7574, 0.3726, 0.3371)</b> .....	3
<b>Conversions</b> .....	4
<b>Details</b> .....	6
<b>Harmonies</b> .....	12
<b>Previews</b> .....	24
<b>Color Blindness Simulation</b> .....	27
<b>CSS Examples</b> .....	30

# Color

**Yxy(35.7574, 0.3726, 0.3371)**

# Conversions

## Conversions Part 1

Format	Color
Hex	C8958F
RGB	200, 149, 143
RGB Percent	78%, 58%, 56%
CMY	0.2157, 0.4157, 0.4393
CMYK	0.00, 0.25, 0.29, 0.22
HSL	6°, 34%, 67%
HSV	6°, 29%, 78%
XYZ	39.5230, 35.7574, 30.7932
YIQ	163.5650, 32.3220, 8.9460

# Conversions

## Conversions Part 2

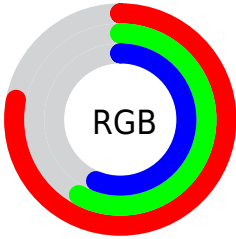
Format	Color
R <sub>Y</sub> B	200, 150, 143
Decimal	13145487
CIE Lab	66.33, 18.31, 10.68
CIE LCh	66, 21.196, 30.246
Yxy	35.7574, 0.3726, 0.3371
Android (android.graphics.Color)	4291335567 (0xFFC8958F)
YUV	163.5650, -10.1385, 31.9535
Hunter-Lab	59.7975, 13.3335, 11.3264

# Details

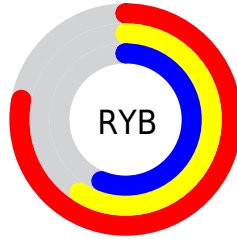
The Yxy color **35.7574, 0.3726, 0.3371** is a light color, and the websafe version is hex **CC9999**. A complement of this color would be **48.5744, 0.2709, 0.3207**, and the grayscale version is **36.9446, 0.3127, 0.3290**.

A 20% lighter version of the original color is **68.0031, 0.3584, 0.3353**, and **15.5454, 0.3920, 0.3381** is the 20% darker color. If you saturate the color by 10%, you get **29.9750, 0.4030, 0.3401**, and if you desaturate by 10%, it is **42.5201, 0.3475, 0.3341**.

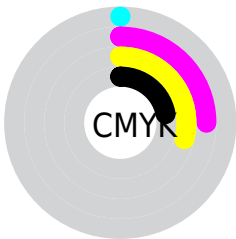
# Distribution



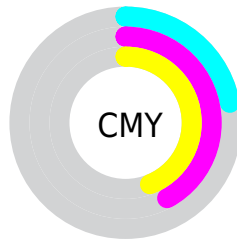
- Red (78%)
- Green (58%)
- Blue (56%)



- Red (78%)
- Yellow (59%)
- Blue (56%)



- Cyan (0%)
- Magenta (25%)
- Yellow (29%)
- Black (22%)



- Cyan (22%)
- Magenta (42%)
- Yellow (44%)


# Brightness & Saturation Gradients

These gradients show how the Yxy color 35.7574, 0.3726, 0.3371 changes by changing the brightness by 10 percent. The first figure shows a shift by +10% for each color and the second figure -10%.


Similar to the brightness gradients but the following saturation gradients show a change of the Yxy color 35.7574, 0.3726, 0.3371 by changing the saturation by 10% instead.





 35.7574, 0.3726,  
0.3371


 35.7574, 0.3726,  
0.3371


327.8989, 0.3410,  
0.3335

 24.2469, 0.3810,  
0.3378


 68.6575, 0.3607,  
0.3359

 15.5169, 0.3921,  
0.3385


 90.8158, 0.3564,  
0.3355

 9.1829, 0.4075,  
0.3393

117.2922, 0.3528,  
0.3350

 4.8607, 0.4302,  
0.3397

148.4710, 0.3497,  
0.3347

 2.1658, 0.4663,  
0.3388

184.7368, 0.3471,  
0.3343

 0.7012, 0.6142,  
0.3766

226.4737, 0.3448,

 0.0000, 1.0000,

0.3340

0.0000

274.0663, 0.3428,  
0.3338

■ 0.0000, 0.0000,  
0.0000

■ 35.7574, 0.3726,  
0.3371

■ 35.7574, 0.3726,  
0.3371

■ 29.9750, 0.4030,  
0.3401

■ 42.5201, 0.3475,  
0.3341

■ 25.1225, 0.4393,  
0.3427

■ 50.3003, 0.3271,  
0.3313

■ 21.1528, 0.4808,  
0.3447

■ 59.1395, 0.3105,  
0.3286

■ 18.0127, 0.5255,  
0.3454

■ 69.0754, 0.2969,  
0.3262

■ 15.6430, 0.5690,  
0.3443

■ 80.1438, 0.2858,  
0.3240

■ 13.9767, 0.6051,  
0.3412

■ 91.0195, 0.2805,  
0.3289

■ 12.9322, 0.6292,  
0.3368

■ 12.8222, 0.6320,  
0.3364

# Harmonies

## Analogous

The Analogous color harmony consists of three colors that are next to each other on the color wheel.



35.7574, 0.3515, 0.3108



35.7574, 0.3726, 0.3371



35.7574, 0.3765, 0.3629

# Triad

The Triadic color harmony groups three colors that are evenly spaced from another and form a triangle on the color wheel.



35.7574, 0.3726, 0.3371



35.7574, 0.3029, 0.3739



35.7574, 0.2639, 0.2775

# Complementary

The Complementary color scheme is a pair of colors which are on the opposite of each other on the color wheel.



35.7574, 0.3726, 0.3371



48.5744, 0.2709, 0.3207

# Split Complementary

Split-complementary colors differ from the complementary color scheme. The scheme consists of three colors, the original color and two neighbors of the complement color.



35.7574, 0.2526, 0.2909



35.7574, 0.3726, 0.3371



35.7574, 0.2743, 0.3471

# Square

The Square scheme is like the rectangle color scheme, but the four colors are evenly spaced on the color wheel.



35.7574, 0.3726, 0.3371



35.7574, 0.3353, 0.3866



35.7574, 0.2562, 0.3160



35.7574, 0.2881, 0.2773



# Rectangle

The Rectangle color scheme consists of four colors that form a rectangle on the color wheel.



35.7574, 0.3726, 0.3371



35.7574, 0.3690, 0.3766



35.7574, 0.2562, 0.3160



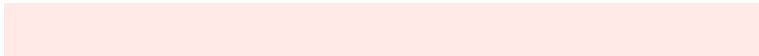
35.7574, 0.2586, 0.2805

# Sweetspot

The Sweet Spot groups the original color and five complimentary colors.



35.7591, 0.3726, 0.3371



86.2081, 0.3282, 0.3314



35.8239, 0.3214, 0.2652



18.0058, 0.3310, 0.3319



0.0000, 0.0000, 0.0000



21.4041, 0.3127, 0.3290



# Same Dimension

The Same Dimension uses a secret algorithm to generate beautiful new colors.



35.7591, 0.3726, 0.3371



55.7319, 0.3901, 0.3389



45.7806, 0.3627, 0.3729



10.8146, 0.3287, 0.3315



8.2172, 0.6305, 0.3375



0.4517, 0.6031, 0.3593



# Inverse Universe

The Inverse Universe completely reimagines the original color for something new.



48.5744, 0.2709, 0.3207



81.3809, 0.2631, 0.3187



37.2006, 0.2667, 0.2807



11.8683, 0.2984, 0.3265



23.1856, 0.2155, 0.2957

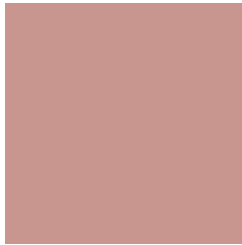


1.1543, 0.2176, 0.3032



# Previews

## White Background



This preview shows how the Yxy color 35.7574, 0.3726, 0.3371 looks on a white background.

## Color Contrast Check

Large Text (above 18pt) WCAG AA × Fail

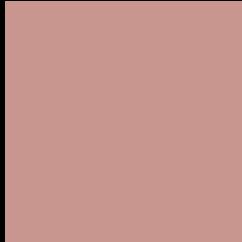
Any Text WCAG AA × Fail

Large Text (above 18pt) WCAG AAA × Fail

Any Text WCAG AAA × Fail



# Black Background



This preview shows how the Yxy color 35.7574, 0.3726, 0.3371 looks on a black background.

## Color Contrast Check

Large Text (above 18pt) WCAG AA ✓ Pass

Any Text WCAG AA ✓ Pass

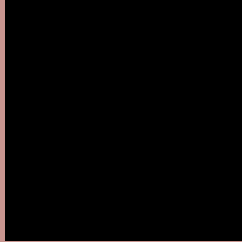
Large Text (above 18pt) WCAG AAA ✓ Pass

Any Text WCAG AAA ✓ Pass

If you want to check with other color combinations, try the [Color Contrast Checker](#).

**Yxy 35.7574, 0.3726, 0.3371**

## Background



This preview shows how black text looks on a background with the Yxy color 35.7574, 0.3726, 0.3371.



This preview shows how white text looks on a background with the Yxy color 35.7574, 0.3726, 0.3371.

# Color Blindness Simulation

Color vision deficiency is a very complex topic, and I could not describe the different causes any better than Wikipedia does, so if you want to learn more, you should check out their [article about color blindness](#).

## Dichromacy



### Original Color

35.7574, 0.3726, 0.3371

### Protanopia

35.8752, 0.3294, 0.3465

### Deuteranopia

35.9203, 0.3545, 0.3485



## Tritanopia

35.8926, 0.3594, 0.3149

# Trichromacy



## Original Color

35.7574, 0.3726, 0.3371

## Protanomaly

35.8042, 0.3442, 0.3432

## Deuteranomaly

35.6826, 0.3617, 0.3441

## Tritanomaly

35.8972, 0.3634, 0.3226

# Monochromacy



## Original Color

35.7574, 0.3726, 0.3371

## Achromatopsia

37.1238, 0.3127, 0.3290

## Achromatomaly

36.5437, 0.3331, 0.3333

# CSS Examples

## Text

The CSS property to change the color of the text to Yxy 35.7574, 0.3726, 0.3371 is called "color". The color property can be set on classes, ids or directly on the HTML element.

This example shows how text in the color `rgb(200, 149, 143)` looks like.

```
.text, #text, p{  
    color:rgb(200, 149, 143)  
}
```

If you want to add a text shadow in that color use the text-shadow property, you can generate a text shadow directly with our [CSS Text Shadow Generator](#).

Here you see how black text with a 4 pixel rgb(200, 149, 143) colored shadow looks like.

```
.shadow{ text-shadow: 4px 4px 2px rgb(200, 149, 143) }
```

## Border

The CSS property to change the border of an element to Yxy 35.7574, 0.3726, 0.3371 is called "border". The border property can be set on classes, ids or directly on the HTML element.

This example shows the color as border, it can be applied via the CSS property "border" or "border-color".

```
.border, #border, table{ border:4px solid rgb(200, 149, 143) }
```

If only the border color should be changed use the property `border-color`.

```
.border{ border-color:rgb(200, 149, 143) }
```

If you want to add a box shadow in that color use:

Here you see how a box with a 4 pixel `rgb(200, 149, 143)` colored shadow looks like.

```
.boxshadow{ -moz-box-shadow:4px 4px 4px  
4px rgb(200, 149, 143); -webkit-box-  
shadow:4px 4px 4px 4px rgb(200, 149, 143);  
box-shadow:4px 4px 4px 4px rgb(200, 149,  
143) }
```



# Background

The CSS property to change the background color of an element to Yxy 35.7574, 0.3726, 0.3371 is called "background". The background property can be set on classes, ids or directly on the HTML element.

```
.background, #background, body{  
background: rgb(200, 149, 143) }
```

If only the background color should be changed can be used:

```
.background{ background-color: rgb(200,  
149, 143) }
```

This example shows the color as background, it is applied via the CSS property "background".

To optimize and compress your CSS code, you can use our [online CSS compressor and optimizer](#) based on csstidy. If you want to create a linear or radial gradient as background or border, check our [CSS Gradient Generator](#).

Hey! You found this booklet interesting? Support Converting Colors with the new Membership Option!

The pro membership hides all ads, plus gives you double the colors in the color bucket, and more awesome pro features!

**[Learn more, Memberships starting at \\$2.50/m!](#)**

**Follow me  
on Twitter!**

@ConvertingColor