

Converting Colors

$Yxy(36.3629, 0.3727, 0.3391)$

Have a look what the booklet for
Yxy(36.3629, 0.3727, 0.3391)
contains.

Yxy(36.5339, 0.3729, 0.3396)	3
Conversions	4
Details	6
Harmonies	12
Previews	24
Color Blindness Simulation	27
CSS Examples	30

Color

Yxy(36.5339, 0.3729, 0.3396)

Conversions

Conversions Part 1

Format	Color
Hex	C9978F
RGB	201, 151, 143
RGB Percent	79%, 59%, 56%
CMY	0.2117, 0.4079, 0.4392
CMYK	0.00, 0.25, 0.29, 0.21
HSL	8°, 35%, 67%
HSV	8°, 29%, 79%
XYZ	40.1163, 36.5339, 30.9290
YIQ	165.0380, 32.3680, 8.1120

Conversions

Conversions Part 2

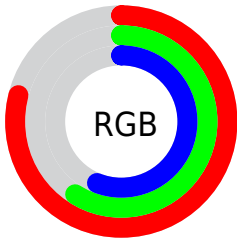
Format	Color
R _Y B	201, 152, 143
Decimal	13211535
CIE Lab	66.93, 17.62, 11.50
CIE LCh	67, 21.041, 33.143
Yxy	36.5339, 0.3729, 0.3396
Android (android.graphics.Color)	4291401615 (0xFFC9978F)
YUV	165.0380, -10.8647, 31.5387
Hunter-Lab	60.4433, 12.6950, 11.9714

Details

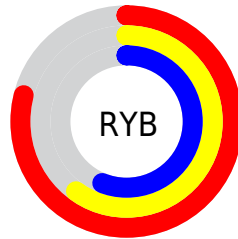
The Yxy color **36.5339, 0.3729, 0.3396** is a light color, and the websafe version is hex **CC9999**. A complement of this color would be **48.2146, 0.2702, 0.3181**, and the grayscale version is **37.6892, 0.3127, 0.3290**.

A 20% lighter version of the original color is **68.9539, 0.3579, 0.3374**, and **16.0156, 0.3922, 0.3416** is the 20% darker color. If you saturate the color by 10%, you get **30.8044, 0.4029, 0.3434**, and if you desaturate by 10%, it is **43.1964, 0.3480, 0.3358**.

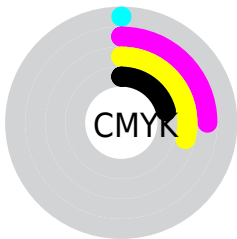
Distribution



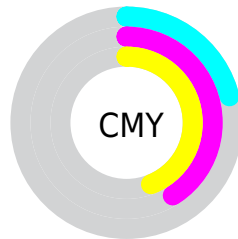
- Red (79%)
- Green (59%)
- Blue (56%)



- Red (79%)
- Yellow (60%)
- Blue (56%)



- Cyan (0%)
- Magenta (25%)
- Yellow (29%)
- Black (21%)





- Cyan (21%)
- Magenta (41%)
- Yellow (44%)

Brightness & Saturation Gradients


These gradients show how the Yxy color 36.5339, 0.3729, 0.3396 changes by changing the brightness by 10 percent. The first figure shows a shift by +10% for each color and the second figure -10%.


Similar to the brightness gradients but the following saturation gradients show a change of the Yxy color 36.5339, 0.3729, 0.3396 by changing the saturation by 10% instead.


 36.5339, 0.3729,
0.3396


 36.5339, 0.3729,
0.3396


331.2881, 0.3413,
0.3348

 24.8468, 0.3813,
0.3406


 69.8553, 0.3610,
0.3380

 15.9630, 0.3924,
0.3418


 92.2585, 0.3567,
0.3373

 9.4980, 0.4076,
0.3431


119.0024, 0.3531,
0.3368

 5.0674, 0.4299,
0.3443

150.4716, 0.3500,
0.3363

 2.2868, 0.4652,
0.3446

187.0503, 0.3474,
0.3358

 0.7667, 0.6009,
0.3838

229.1231, 0.3451,

 0.0000, 1.0000,

0.3354

0.0000

277.0742, 0.3431,
0.3351

■ 0.0000, 0.0000,
0.0000

■ 36.5339, 0.3729,
0.3396

■ 36.5339, 0.3729,
0.3396

■ 30.8044, 0.4029,
0.3434

■ 43.1964, 0.3480,
0.3358

■ 25.9614, 0.4385,
0.3469

■ 50.8257, 0.3277,
0.3321

■ 21.9618, 0.4790,
0.3495

■ 59.4602, 0.3110,
0.3286

■ 18.7571, 0.5226,
0.3505

■ 69.1346, 0.2973,
0.3255

■ 16.2937, 0.5652,
0.3492

■ 79.8819, 0.2861,
0.3226

■ 14.5112, 0.6011,
0.3454

■ 91.1600, 0.2811,
0.3289

■ 13.3359, 0.6259,
0.3398

■ 13.2347, 0.6282,
0.3394

Harmonies

Analogous

The Analogous color harmony consists of three colors that are next to each other on the color wheel.



36.5339, 0.3536, 0.3134



36.5339, 0.3729, 0.3396



36.5339, 0.3750, 0.3647

Triad

The Triadic color harmony groups three colors that are evenly spaced from another and form a triangle on the color wheel.



36.5339, 0.3729, 0.3396



36.5339, 0.3001, 0.3712



36.5339, 0.2664, 0.2776

Complementary

The Complementary color scheme is a pair of colors which are on the opposite of each other on the color wheel.



36.5339, 0.3729, 0.3396



48.2146, 0.2702, 0.3181

Split Complementary

Split-complementary colors differ from the complementary color scheme. The scheme consists of three colors, the original color and two neighbors of the complement color.



36.5339, 0.2539, 0.2896



36.5339, 0.3729, 0.3396



36.5339, 0.2725, 0.3439

Square

The Square scheme is like the rectangle color scheme, but the four colors are evenly spaced on the color wheel.



36.5339, 0.3729, 0.3396



36.5339, 0.3320, 0.3853



36.5339, 0.2560, 0.3135



36.5339, 0.2913, 0.2787

Rectangle

The Rectangle color scheme consists of four colors that form a rectangle on the color wheel.



36.5339, 0.3729, 0.3396



36.5339, 0.3665, 0.3776



36.5339, 0.2560, 0.3135



36.5339, 0.2607, 0.2801

Sweetspot

The Sweet Spot groups the original color and five complimentary colors.



36.5356, 0.3729, 0.3396



86.6250, 0.3282, 0.3322



35.9321, 0.3233, 0.2666



18.1076, 0.3309, 0.3327



0.0000, 0.0000, 0.0000



21.4041, 0.3127, 0.3290

Same Dimension

The Same Dimension uses a secret algorithm to generate beautiful new colors.



36.5356, 0.3729, 0.3396



55.8576, 0.3922, 0.3422



46.9453, 0.3628, 0.3758



10.8684, 0.3286, 0.3322



8.3992, 0.6265, 0.3408



0.4763, 0.5935, 0.3669

Inverse Universe

The Inverse Universe completely reimagines the original color for something new.



48.2146, 0.2702, 0.3181



79.2324, 0.2613, 0.3152



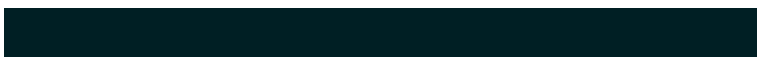
36.7108, 0.2658, 0.2772



11.8090, 0.2984, 0.3257



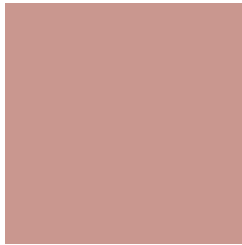
21.6250, 0.2126, 0.2853



1.0944, 0.2153, 0.2952

Previews

White Background



This preview shows how the Yxy color 36.5339, 0.3729, 0.3396 looks on a white background.

Color Contrast Check

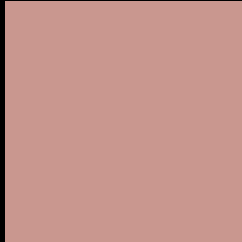
Large Text (above 18pt) WCAG AA × Fail

Any Text WCAG AA × Fail

Large Text (above 18pt) WCAG AAA × Fail

Any Text WCAG AAA × Fail

Black Background



This preview shows how the Yxy color 36.5339, 0.3729, 0.3396 looks on a black background.

Color Contrast Check

Large Text (above 18pt) WCAG AA ✓ Pass

Any Text WCAG AA ✓ Pass

Large Text (above 18pt) WCAG AAA ✓ Pass

Any Text WCAG AAA ✓ Pass

If you want to check with other color combinations, try the [Color Contrast Checker](#).

Yxy 36.5339, 0.3729, 0.3396

Background



This preview shows how black text looks on a background with the Yxy color 36.5339, 0.3729, 0.3396.



This preview shows how white text looks on a background with the Yxy color 36.5339, 0.3729, 0.3396.

Color Blindness Simulation

Color vision deficiency is a very complex topic, and I could not describe the different causes any better than Wikipedia does, so if you want to learn more, you should check out their [article about color blindness](#).

Dichromacy



Original Color

36.5339, 0.3729, 0.3396

Protanopia

36.7993, 0.3310, 0.3492

Deuteranopia

36.6317, 0.3573, 0.3497



Tritanopia

36.4144, 0.3581, 0.3137

Trichromacy



Original Color

36.5339, 0.3729, 0.3396

Protanomaly

36.7266, 0.3458, 0.3458

Deuteranomaly

36.6022, 0.3632, 0.3467

Tritanomaly

36.3845, 0.3631, 0.3227

Monochromacy



Original Color

36.5339, 0.3729, 0.3396

Achromatopsia

37.6262, 0.3127, 0.3290

Achromatomaly

37.0409, 0.3330, 0.3332

CSS Examples

Text

The CSS property to change the color of the text to Yxy 36.5339, 0.3729, 0.3396 is called "color". The color property can be set on classes, ids or directly on the HTML element.

This example shows how text in the color `rgb(201, 151, 143)` looks like.

```
.text, #text, p{  
    color:rgb(201, 151, 143)  
}
```

If you want to add a text shadow in that color use the text-shadow property, you can generate a text shadow directly with our [CSS Text Shadow Generator](#).

Here you see how black text with a 4 pixel rgb(201, 151, 143) colored shadow looks like.

```
.shadow{ text-shadow: 4px 4px 2px rgb(201, 151, 143) }
```

Border

The CSS property to change the border of an element to Yxy 36.5339, 0.3729, 0.3396 is called "border". The border property can be set on classes, ids or directly on the HTML element.

This example shows the color as border, it can be applied via the CSS property "border" or "border-color".

```
.border, #border, table{ border:4px solid rgb(201, 151, 143) }
```

If only the border color should be changed use the property `border-color`.

```
.border{ border-color:rgb(201, 151, 143) }
```

If you want to add a box shadow in that color use:

Here you see how a box with a 4 pixel `rgb(201, 151, 143)` colored shadow looks like.

```
.boxshadow{ -moz-box-shadow:4px 4px 4px  
4px rgb(201, 151, 143); -webkit-box-  
shadow:4px 4px 4px 4px rgb(201, 151, 143);  
box-shadow:4px 4px 4px 4px rgb(201, 151,  
143) }
```


Background

The CSS property to change the background color of an element to Yxy 36.5339, 0.3729, 0.3396 is called "background". The background property can be set on classes, ids or directly on the HTML element.

```
.background, #background, body{  
background: rgb(201, 151, 143) }
```

If only the background color should be changed can be used:

```
.background{ background-color: rgb(201,  
151, 143) }
```

This example shows the color as background, it is applied via the CSS property "background".

To optimize and compress your CSS code, you can use our [online CSS compressor and optimizer](#) based on csstidy. If you want to create a linear or radial gradient as background or border, check our [CSS Gradient Generator](#).

Hey! You found this booklet interesting? Support Converting Colors with the new Membership Option!

The pro membership hides all ads, plus gives you double the colors in the color bucket, and more awesome pro features!

[Learn more, Memberships starting at \\$2.50/m!](#)

**Follow me
on Twitter!**

@ConvertingColor