

# Converting Colors

$Yxy(36.5207, 0.3503, 0.3291)$

Have a look what the booklet for  
Yxy(36.5207, 0.3503, 0.3291)  
contains.

<b>Yxy(36.5207, 0.3503, 0.3291)</b> .....	3
<b>Conversions</b> .....	4
<b>Details</b> .....	6
<b>Harmonies</b> .....	12
<b>Previews</b> .....	24
<b>Color Blindness Simulation</b> .....	27
<b>CSS Examples</b> .....	30

# Color

**Yxy(36.5207, 0.3503, 0.3291)**

# Conversions

## Conversions Part 1

Format	Color
Hex	BF9A9A
RGB	191, 154, 154
RGB Percent	75%, 60%, 60%
CMY	0.2510, 0.3961, 0.3960
CMYK	0.00, 0.19, 0.19, 0.25
HSL	360°, 22%, 68%
HSV	360°, 19%, 75%
XYZ	38.8733, 36.5207, 35.5774
YIQ	165.0630, 22.0520, 7.8440

# Conversions

## Conversions Part 2

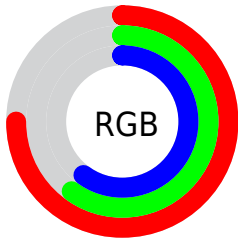
<b>Format</b>	<b>Color</b>
<b>RYB</b>	191, 154, 154
Decimal	12556954
CIELab	66.92, 13.75, 5.21
CIElCh	67, 14.699, 20.739
Yxy	36.5207, 0.3503, 0.3291
Android (android.graphics.Color)	4290747034 (0xFFBF9A9A)
YUV	165.0630, -5.4541, 22.7467
Hunter-Lab	60.4324, 9.0640, 7.3977

# Details

The Yxy color **36.5207, 0.3503, 0.3291** is a light color, and the websafe version is hex **CC9999**. A complement of this color would be **47.8895, 0.2841, 0.3289**, and the grayscale version is **37.6782, 0.3127, 0.3290**.

A 20% lighter version of the original color is **69.6223, 0.3434, 0.3291**, and **15.9981, 0.3624, 0.3291** is the 20% darker color. If you saturate the color by 10%, you get **30.1245, 0.3770, 0.3292**, and if you desaturate by 10%, it is **44.0246, 0.3289, 0.3290**.

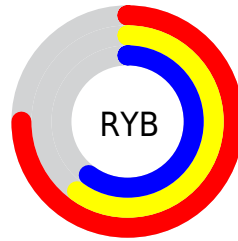
# Distribution



Red (75%)

Green (60%)

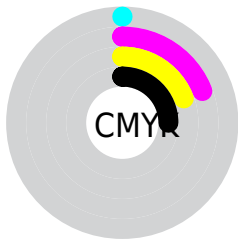
Blue (60%)



Red (75%)

Yellow (60%)

Blue (60%)

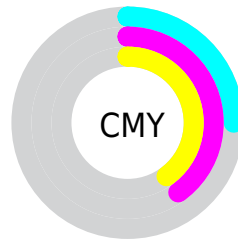


Cyan (0%)

Magenta (19%)

Yellow (19%)

Black (25%)



Cyan (25%)

Magenta (40%)


Yellow (40%)


# Brightness & Saturation Gradients

These gradients show how the Yxy color 36.5207, 0.3503, 0.3291 changes by changing the brightness by 10 percent. The first figure shows a shift by +10% for each color and the second figure -10%.


Similar to the brightness gradients but the following saturation gradients show a change of the Yxy color 36.5207, 0.3503, 0.3291 by changing the saturation by 10% instead.




 36.5207, 0.3503,  
0.3291


 36.5207, 0.3503,  
0.3291


331.2307, 0.3306,  
0.3293

 24.8366, 0.3555,  
0.3290


 69.8350, 0.3429,  
0.3292

 15.9554, 0.3624,  
0.3287


 92.2340, 0.3402,  
0.3293

 9.4926, 0.3720,  
0.3283


118.9734, 0.3380,  
0.3293

 5.0638, 0.3860,  
0.3275

150.4377, 0.3361,  
0.3293

 2.2848, 0.4086,  
0.3257

187.0111, 0.3344,  
0.3293

 0.7656, 0.4672,  
0.3302

229.0782, 0.3330,

 0.0000, 1.0000,

0.3293

0.0000

277.0233, 0.3317,  
0.3293

0.0000, 0.0000,  
0.0000

36.5207, 0.3503,  
0.3291

36.5207, 0.3503,  
0.3291

30.1245, 0.3770,  
0.3292

44.0246, 0.3289,  
0.3290

24.7788, 0.4099,  
0.3293

52.6797, 0.3117,  
0.3290

20.4290, 0.4495,  
0.3294

62.5336, 0.2980,  
0.3290

17.0136, 0.4947,  
0.3295

73.6294, 0.2869,  
0.3289

14.4641, 0.5424,  
0.3297

86.0083, 0.2780,  
0.3289

■ 12.7029, 0.5866,  
0.3298

■ 89.8152, 0.2757,  
0.3289

■ 11.6384, 0.6199,  
0.3299

■ 11.1043, 0.6390,  
0.3300

■ 11.0753, 0.6401,  
0.3300

# Harmonies

## Analogous

The Analogous color harmony consists of three colors that are next to each other on the color wheel.



36.5207, 0.3331, 0.3111



36.5207, 0.3503, 0.3291



36.5207, 0.3570, 0.3478

# Triad

The Triadic color harmony groups three colors that are evenly spaced from another and form a triangle on the color wheel.



36.5207, 0.3503, 0.3291



36.5207, 0.3134, 0.3633



36.5207, 0.2751, 0.2953

# Complementary

The Complementary color scheme is a pair of colors which are on the opposite of each other on the color wheel.



36.5207, 0.3503, 0.3291



47.8895, 0.2841, 0.3289

# Split Complementary

Split-complementary colors differ from the complementary color scheme. The scheme consists of three colors, the original color and two neighbors of the complement color.



36.5207, 0.2703, 0.3079



36.5207, 0.3503, 0.3291



36.5207, 0.2919, 0.3478

# Square

The Square scheme is like the rectangle color scheme, but the four colors are evenly spaced on the color wheel.



36.5207, 0.3503, 0.3291



36.5207, 0.3352, 0.3685



36.5207, 0.2764, 0.3271



36.5207, 0.2897, 0.2918



# Rectangle

The Rectangle color scheme consists of four colors that form a rectangle on the color wheel.



36.5207, 0.3503, 0.3291



36.5207, 0.3546, 0.3583



36.5207, 0.2764, 0.3271



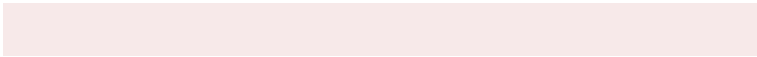
36.5207, 0.2723, 0.2985

# Sweetspot

The Sweet Spot groups the original color and five complimentary colors.



36.5224, 0.3503, 0.3291



83.6934, 0.3228, 0.3290



37.8703, 0.3144, 0.2815



18.1597, 0.3240, 0.3290



97.7402, 0.3127, 0.3290



20.4902, 0.3127, 0.3290



# Same Dimension

The Same Dimension uses a secret algorithm to generate beautiful new colors.



36.5224, 0.3503, 0.3291



60.6024, 0.3603, 0.3291



42.8691, 0.3459, 0.3527



9.5364, 0.3288, 0.3290



7.2793, 0.6401, 0.3300



0.2851, 0.6400, 0.3299



# Inverse Universe

The Inverse Universe completely reimagines the original color for something new.



36.5224, 0.3503, 0.3291



60.6024, 0.3603, 0.3291



40.5635, 0.2826, 0.3041



9.5364, 0.3288, 0.3290



7.2793, 0.6401, 0.3300

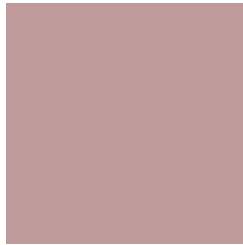


0.2851, 0.6400, 0.3299



# Previews

## White Background



This preview shows how the Yxy color 36.5207, 0.3503, 0.3291 looks on a white background.

## Color Contrast Check

Large Text (above 18pt) WCAG AA × Fail

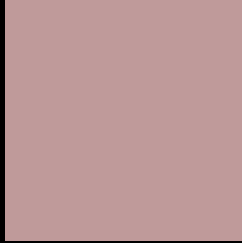
Any Text WCAG AA × Fail

Large Text (above 18pt) WCAG AAA × Fail

Any Text WCAG AAA × Fail



# Black Background



This preview shows how the Yxy color 36.5207, 0.3503, 0.3291 looks on a black background.

## Color Contrast Check

Large Text (above 18pt) WCAG AA ✓ Pass

Any Text WCAG AA ✓ Pass

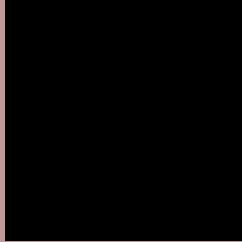
Large Text (above 18pt) WCAG AAA ✓ Pass

Any Text WCAG AAA ✓ Pass

If you want to check with other color combinations, try the [Color Contrast Checker](#).

**Yxy 36.5207, 0.3503, 0.3291**

## Background



This preview shows how black text looks on a background with the Yxy color 36.5207, 0.3503, 0.3291.



This preview shows how white text looks on a background with the Yxy color 36.5207, 0.3503, 0.3291.

# Color Blindness Simulation

Color vision deficiency is a very complex topic, and I could not describe the different causes any better than Wikipedia does, so if you want to learn more, you should check out their [article about color blindness](#).

## Dichromacy



### Original Color

36.5207, 0.3503, 0.3291

### Protanopia

36.5594, 0.3202, 0.3333

### Deuteranopia

36.3589, 0.3414, 0.3346



## Tritanopia

36.3433, 0.3418, 0.3132

# Trichromacy



## Original Color

36.5207, 0.3503, 0.3291

## Protanomaly

36.4607, 0.3312, 0.3319

## Deuteranomaly

36.3911, 0.3447, 0.3332

## Tritanomaly

36.5270, 0.3456, 0.3198

# Monochromacy



## Original Color

36.5207, 0.3503, 0.3291

## Achromatopsia

37.6262, 0.3127, 0.3290

## Achromatomaly

37.0616, 0.3252, 0.3290

# CSS Examples

## Text

The CSS property to change the color of the text to Yxy 36.5207, 0.3503, 0.3291 is called "color". The color property can be set on classes, ids or directly on the HTML element.

This example shows how text in the color `rgb(191, 154, 154)` looks like.

```
.text, #text, p{  
    color:rgb(191, 154, 154)  
}
```

If you want to add a text shadow in that color use the text-shadow property, you can generate a text shadow directly with our [CSS Text Shadow Generator](#).

Here you see how black text with a 4 pixel rgb(191, 154, 154) colored shadow looks like.

```
.shadow{ text-shadow: 4px 4px 2px rgb(191, 154, 154) }
```

## Border

The CSS property to change the border of an element to Yxy 36.5207, 0.3503, 0.3291 is called "border". The border property can be set on classes, ids or directly on the HTML element.

This example shows the color as border, it can be applied via the CSS property "border" or "border-color".

```
.border, #border, table{ border:4px solid rgb(191, 154, 154) }
```

If only the border color should be changed use the property `border-color`.

```
.border{ border-color:rgb(191, 154, 154) }
```

If you want to add a box shadow in that color use:

Here you see how a box with a 4 pixel `rgb(191, 154, 154)` colored shadow looks like.

```
.boxshadow{ -moz-box-shadow:4px 4px 4px  
4px rgb(191, 154, 154); -webkit-box-  
shadow:4px 4px 4px 4px rgb(191, 154, 154);  
box-shadow:4px 4px 4px 4px rgb(191, 154,  
154) }
```



# Background

The CSS property to change the background color of an element to Yxy 36.5207, 0.3503, 0.3291 is called "background". The background property can be set on classes, ids or directly on the HTML element.

```
.background, #background, body{  
background: rgb(191, 154, 154) }
```

If only the background color should be changed can be used:

```
.background{ background-color: rgb(191,  
154, 154) }
```

This example shows the color as background, it is applied via the CSS property "background".

To optimize and compress your CSS code, you can use our [online CSS compressor and optimizer](#) based on csstidy. If you want to create a linear or radial gradient as background or border, check our [CSS Gradient Generator](#).

Hey! You found this booklet interesting? Support Converting Colors with the new Membership Option!

The pro membership hides all ads, plus gives you double the colors in the color bucket, and more awesome pro features!

**[Learn more, Memberships starting at \\$2.50/m!](#)**

**Follow me  
on Twitter!**

@ConvertingColor