

Converting Colors

Yxy(36.6143, 0.3086, 0.3134)

Have a look what the booklet for
Yxy(36.6143, 0.3086, 0.3134)
contains.

Yxy(36.6838, 0.3087, 0.3135)	3
<i>Conversions</i>	4
<i>Details</i>	6
<i>Harmonies</i>	12
<i>Previews</i>	24
<i>Color Blindness Simulation</i>	27
<i>CSS Examples</i>	30

Color

Yxy(36.6838, 0.3087, 0.3135)

Conversions

Conversions Part 1

Format	Color
Hex	A7A1AC
RGB	167, 161, 172
RGB Percent	65%, 63%, 67%
CMY	0.3452, 0.3686, 0.3255
CMYK	0.03, 0.06, 0.00, 0.33
HSL	272°, 6%, 65%
HSV	272°, 6%, 67%
XYZ	36.1221, 36.6838, 44.2078
YIQ	164.0480, 0.0450, 4.6930

Conversions

Conversions Part 2

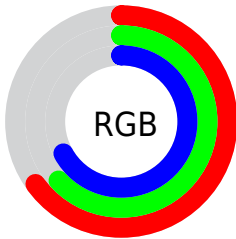
Format	Color
RYB	167, 161, 172
Decimal	10985900
CIELab	67.04, 4.24, -4.92
CIELCh	67, 6.502, 310.758
Yxy	36.6838, 0.3087, 0.3135
Android (android.graphics.Color)	4289175980 (0xFFA7A1AC)
YUV	164.0480, 3.9203, 2.5889
Hunter-Lab	60.5672, 0.4645, -0.8786

Details

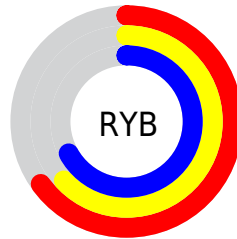
The Yxy color **36.6838, 0.3087, 0.3135** is a light color, and the websafe version is hex **999999**. A complement of this color would be **40.1929, 0.3165, 0.3445**, and the grayscale version is **37.1282, 0.3127, 0.3290**.

A 20% lighter version of the original color is **70.1874, 0.3097, 0.3171**, and **16.1528, 0.3070, 0.3093** is the 20% darker color. If you saturate the color by 10%, you get **30.2481, 0.3015, 0.2877**, and if you desaturate by 10%, it is **44.0021, 0.3148, 0.3374**.

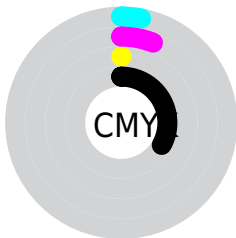
Distribution



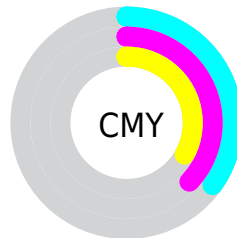
- Red (65%)
- Green (63%)
- Blue (67%)



- Red (65%)
- Yellow (63%)
- Blue (67%)



- Cyan (3%)
- Magenta (6%)
- Yellow (0%)
- Black (33%)



- Cyan (35%)
- Magenta (37%)
- Yellow (33%)

Brightness & Saturation Gradients

These gradients show how the Yxy color 36.6838, 0.3087, 0.3135 changes by changing the brightness by 10 percent. The first figure shows a shift by +10% for each color and the second figure -10%.

Similar to the brightness gradients but the following saturation gradients show a change of the Yxy color 36.6838, 0.3087, 0.3135 by changing the saturation by 10% instead.

■ 36.6838, 0.3087,
0.3135

■ 36.6838, 0.3087,
0.3135

■ 331.9395, 0.3108,
0.3215

■ 24.9628, 0.3081,
0.3114

■ 70.0862, 0.3095,
0.3165

■ 16.0493, 0.3074,
0.3087

■ 92.5364, 0.3098,
0.3176

■ 9.5591, 0.3063,
0.3050

■ 119.3317, 0.3100,
0.3185

■ 5.1076, 0.3048,
0.2996

■ 150.8565, 0.3102,
0.3193

■ 2.3105, 0.3022,
0.2912

■ 187.4954, 0.3104,
0.3199

■ 0.7793, 0.2978,
0.2749

■ 229.6326, 0.3106,

■ 0.0000, 0.0000,

0.3205

0.0000

277.6525, 0.3107,
0.3210

■ 36.6838, 0.3087,
0.3135

■ 36.6838, 0.3087,
0.3135

■ 30.2481, 0.3015,
0.2877

■ 44.0021, 0.3148,
0.3374

■ 24.6557, 0.2932,
0.2602

■ 52.2307, 0.3199,
0.3592

■ 19.8714, 0.2837,
0.2316

■ 61.4021, 0.3242,
0.3789

■ 15.8557, 0.2731,
0.2028

■ 71.5457, 0.3277,
0.3966

■ 12.5656, 0.2617,
0.1749

■ 82.6894, 0.3306,
0.4125

■ 9.9537, 0.2497,
0.1493

■ 88.8378, 0.3345,
0.4185

■ 7.9668, 0.2376,
0.1272

■ 90.0555, 0.3398,
0.4170

■ 6.5434, 0.2258,
0.1098

■ 91.3314, 0.3450,
0.4154

■ 5.5995, 0.2149,
0.0976

■ 92.6664, 0.3504,
0.4139

Harmonies

Analogous

The Analogous color harmony consists of three colors that are next to each other on the color wheel.



36.6838, 0.2999, 0.3124



36.6838, 0.3087, 0.3135



36.6838, 0.3187, 0.3186

Triad

The Triadic color harmony groups three colors that are evenly spaced from another and form a triangle on the color wheel.



36.6838, 0.3087, 0.3135



36.6838, 0.3311, 0.3422



36.6838, 0.2984, 0.3314

Complementary

The Complementary color scheme is a pair of colors which are on the opposite of each other on the color wheel.



36.6838, 0.3087, 0.3135



40.1929, 0.3165, 0.3445

Split Complementary

Split-complementary colors differ from the complementary color scheme. The scheme consists of three colors, the original color and two neighbors of the complement color.



36.6838, 0.3066, 0.3398



36.6838, 0.3087, 0.3135



36.6838, 0.3255, 0.3460

Square

The Square scheme is like the rectangle color scheme, but the four colors are evenly spaced on the color wheel.



36.6838, 0.3087, 0.3135



36.6838, 0.3317, 0.3350



36.6838, 0.3165, 0.3451



36.6838, 0.2941, 0.3225

Rectangle

The Rectangle color scheme consists of four colors that form a rectangle on the color wheel.



36.6838, 0.3087, 0.3135



36.6838, 0.3247, 0.3236



36.6838, 0.3165, 0.3451



36.6838, 0.3008, 0.3344

Sweetspot

The Sweet Spot groups the original color and five complimentary colors.



36.6854, 0.3087, 0.3135



72.1274, 0.3115, 0.3242



37.8818, 0.3031, 0.3206



15.7073, 0.3116, 0.3244



86.8899, 0.3127, 0.3290



16.2647, 0.3127, 0.3290

Same Dimension

The Same Dimension uses a secret algorithm to generate beautiful new colors.



36.6854, 0.3087, 0.3135



64.3868, 0.3075, 0.3091



37.2307, 0.3138, 0.3142



7.9628, 0.3067, 0.3061



3.9865, 0.2122, 0.0942



0.1429, 0.2448, 0.1122

Inverse Universe

The Inverse Universe completely reimagines the original color for something new.



37.0212, 0.3187, 0.3220



65.1597, 0.3205, 0.3200



39.6717, 0.3117, 0.3442



8.0741, 0.3217, 0.3186



6.9563, 0.5099, 0.2582



0.2046, 0.4385, 0.2189

Previews

White Background



This preview shows how the Yxy color 36.6838, 0.3087, 0.3135 looks on a white background.

Color Contrast Check

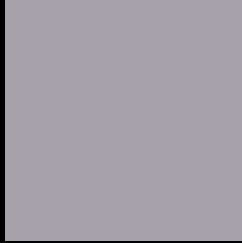
Large Text (above 18pt) WCAG AA × Fail

Any Text WCAG AA × Fail

Large Text (above 18pt) WCAG AAA × Fail

Any Text WCAG AAA × Fail

Black Background



This preview shows how the Yxy color 36.6838, 0.3087, 0.3135 looks on a black background.

Color Contrast Check

Large Text (above 18pt) WCAG AA ✓ Pass

Any Text WCAG AA ✓ Pass

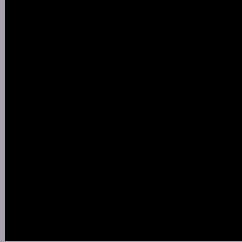
Large Text (above 18pt) WCAG AAA ✓ Pass

Any Text WCAG AAA ✓ Pass

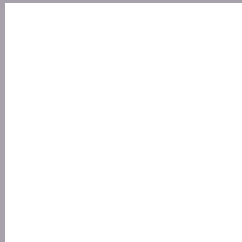
If you want to check with other color combinations, try the [Color Contrast Checker](#).

Yxy 36.6838, 0.3087, 0.3135

Background



This preview shows how black text looks on a background with the Yxy color 36.6838, 0.3087, 0.3135.



This preview shows how white text looks on a background with the Yxy color 36.6838, 0.3087, 0.3135.

Color Blindness Simulation

Color vision deficiency is a very complex topic, and I could not describe the different causes any better than Wikipedia does, so if you want to learn more, you should check out their [article about color blindness](#).

Dichromacy



Original Color

36.6838, 0.3087, 0.3135

Protanopia

36.6443, 0.3041, 0.3133

Deuteranopia

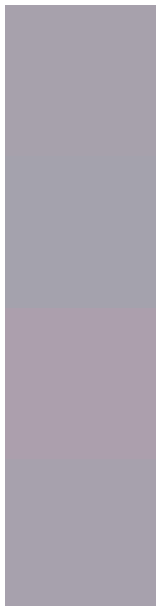
36.5848, 0.3156, 0.3083



Tritanopia

36.7224, 0.3079, 0.3121

Trichromacy



Original Color

36.6838, 0.3087, 0.3135

Protanomaly

36.7503, 0.3051, 0.3134

Deuteranomaly

36.5841, 0.3127, 0.3095

Tritanomaly

36.7224, 0.3079, 0.3121

Monochromacy



Original Color

36.6838, 0.3087, 0.3135

Achromatopsia

37.1238, 0.3127, 0.3290

Achromatomaly

36.9837, 0.3111, 0.3233

CSS Examples

Text

The CSS property to change the color of the text to Yxy 36.6838, 0.3087, 0.3135 is called "color". The color property can be set on classes, ids or directly on the HTML element.

This example shows how text in the color `rgb(167, 161, 172)` looks like.

```
.text, #text, p{  
    color:rgb(167, 161, 172)  
}
```

If you want to add a text shadow in that color use the text-shadow property, you can generate a text shadow directly with our [CSS Text Shadow Generator](#).

Here you see how black text with a 4 pixel rgb(167, 161, 172) colored shadow looks like.

```
.shadow{ text-shadow: 4px 4px 2px rgb(167, 161, 172) }
```

Border

The CSS property to change the border of an element to Yxy 36.6838, 0.3087, 0.3135 is called "border". The border property can be set on classes, ids or directly on the HTML element.

This example shows the color as border, it can be applied via the CSS property "border" or "border-color".

```
.border, #border, table{ border:4px solid rgb(167, 161, 172) }
```

If only the border color should be changed use the property `border-color`.

```
.border{ border-color:rgb(167, 161, 172) }
```

If you want to add a box shadow in that color use:

Here you see how a box with a 4 pixel `rgb(167, 161, 172)` colored shadow looks like.

```
.boxshadow{ -moz-box-shadow:4px 4px 4px  
4px rgb(167, 161, 172); -webkit-box-  
shadow:4px 4px 4px 4px rgb(167, 161, 172);  
box-shadow:4px 4px 4px 4px rgb(167, 161,  
172) }
```


Background

The CSS property to change the background color of an element to Yxy 36.6838, 0.3087, 0.3135 is called "background". The background property can be set on classes, ids or directly on the HTML element.

```
.background, #background, body{  
background: rgb(167, 161, 172) }
```

If only the background color should be changed can be used:

```
.background{ background-color: rgb(167,  
161, 172) }
```

This example shows the color as background, it is applied via the CSS property "background".

To optimize and compress your CSS code, you can use our [online CSS compressor and optimizer](#) based on csstidy. If you want to create a linear or radial gradient as background or border, check our [CSS Gradient Generator](#).

Hey! You found this booklet interesting? Support Converting Colors with the new Membership Option!

The pro membership hides all ads, plus gives you double the colors in the color bucket, and more awesome pro features!

[Learn more, Memberships starting at \\$2.50/m!](#)

**Follow me
on Twitter!**

@ConvertingColor