

# Converting Colors

$Yxy(36.7931, 0.3630, 0.3405)$

Have a look what the booklet for  
Yxy(36.7931, 0.3630, 0.3405)  
contains.

<b>Yxy(36.7886, 0.3625, 0.3398)</b> .....	3
<b><i>Conversions</i></b> .....	4
<b><i>Details</i></b> .....	6
<b><i>Harmonies</i></b> .....	12
<b><i>Previews</i></b> .....	24
<b><i>Color Blindness Simulation</i></b> .....	27
<b><i>CSS Examples</i></b> .....	30

# Color

**Yxy(36.7886, 0.3625, 0.3398)**

# Conversions

## Conversions Part 1

<b>Format</b>	<b>Color</b>
Hex	C39A92
RGB	195, 154, 146
RGB Percent	76%, 60%, 57%
CMY	0.2354, 0.3960, 0.4274
CMYK	0.00, 0.21, 0.25, 0.24
HSL	10°, 29%, 67%
HSV	10°, 25%, 76%
XYZ	39.2462, 36.7886, 32.2306
YIQ	165.3470, 27.0040, 6.2040

# Conversions

## Conversions Part 2

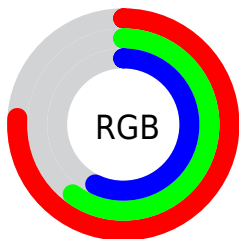
Format	Color
R <sub>Y</sub> B	195, 156, 146
Decimal	12819090
CIE Lab	67.12, 14.06, 10.02
CIE LCh	67, 17.261, 35.470
Yxy	36.7886, 0.3625, 0.3398
Android (android.graphics.Color)	4291009170 (0xFFC39A92)
YUV	165.3470, -9.5381, 26.0057
Hunter-Lab	60.6536, 9.3555, 10.9515

# Details

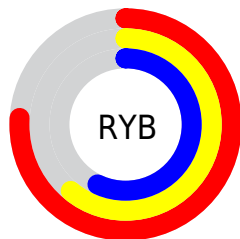
The Yxy color **36.7886, 0.3625, 0.3398** is a light color, and the websafe version is hex **CC9999**. A complement of this color would be **45.5828, 0.2753, 0.3179**, and the grayscale version is **37.8396, 0.3127, 0.3290**.

A 20% lighter version of the original color is **69.9773, 0.3526, 0.3374**, and **16.1205, 0.3771, 0.3420** is the 20% darker color. If you saturate the color by 10%, you get **31.2100, 0.3900, 0.3444**, and if you desaturate by 10%, it is **43.2058, 0.3397, 0.3353**.

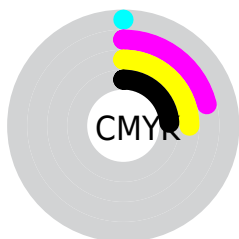
# Distribution



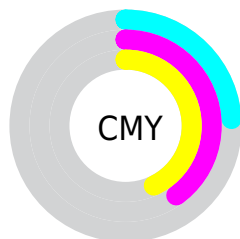
- Red (76%)
- Green (60%)
- Blue (57%)



- Red (76%)
- Yellow (61%)
- Blue (57%)



- Cyan (0%)
- Magenta (21%)
- Yellow (25%)
- Black (24%)




- Cyan (24%)
- Magenta (40%)
- Yellow (43%)


# Brightness & Saturation Gradients

These gradients show how the Yxy color 36.7886, 0.3625, 0.3398 changes by changing the brightness by 10 percent. The first figure shows a shift by +10% for each color and the second figure -10%.


Similar to the brightness gradients but the following saturation gradients show a change of the Yxy color 36.7886, 0.3625, 0.3398 by changing the saturation by 10% instead.




 36.7886, 0.3625,  
0.3398


 36.7886, 0.3625,  
0.3398


332.3944, 0.3364,  
0.3347

 25.0439, 0.3694,  
0.3410


 70.2475, 0.3527,  
0.3380

 16.1097, 0.3785,  
0.3424


 92.7305, 0.3491,  
0.3373

 9.6018, 0.3911,  
0.3441


119.5617, 0.3462,  
0.3367

 5.1358, 0.4096,  
0.3462

151.1255, 0.3436,  
0.3362

 2.3271, 0.4389,  
0.3484

187.8062, 0.3414,  
0.3357

 0.7880, 0.5417,  
0.3819

229.9884, 0.3395,

 0.0000, 1.0000,

0.3353

0.0000

278.0563, 0.3379,  
0.3350

0.0000, 0.0000,  
0.0000

36.7886, 0.3625,  
0.3398

36.7886, 0.3625,  
0.3398

31.2100, 0.3900,  
0.3444

43.2058, 0.3397,  
0.3353

26.4305, 0.4227,  
0.3487

50.4891, 0.3210,  
0.3311

22.4146, 0.4605,  
0.3523

58.6710, 0.3056,  
0.3271

19.1224, 0.5022,  
0.3544

67.7806, 0.2929,  
0.3235

16.5104, 0.5448,  
0.3543

77.8461, 0.2823,  
0.3203

■ 14.5301, 0.5836,  
0.3512

■ 88.3681, 0.2776,  
0.3256

■ 13.1262, 0.6131,  
0.3453

■ 90.3394, 0.2778,  
0.3289

■ 12.6248, 0.6243,  
0.3425

# Harmonies

## Analogous

The Analogous color harmony consists of three colors that are next to each other on the color wheel.



36.7886, 0.3477, 0.3179



36.7886, 0.3625, 0.3398



36.7886, 0.3632, 0.3601

# Triad

The Triadic color harmony groups three colors that are evenly spaced from another and form a triangle on the color wheel.



36.7886, 0.3625, 0.3398



36.7886, 0.3006, 0.3617



36.7886, 0.2759, 0.2863

# Complementary

The Complementary color scheme is a pair of colors which are on the opposite of each other on the color wheel.



36.7886, 0.3625, 0.3398



45.5828, 0.2753, 0.3179

# Split Complementary

Split-complementary colors differ from the complementary color scheme. The scheme consists of three colors, the original color and two neighbors of the complement color.



36.7886, 0.2645, 0.2957



36.7886, 0.3625, 0.3398



36.7886, 0.2783, 0.3393

# Square

The Square scheme is like the rectangle color scheme, but the four colors are evenly spaced on the color wheel.



36.7886, 0.3625, 0.3398



36.7886, 0.3267, 0.3743



36.7886, 0.2654, 0.3148



36.7886, 0.2972, 0.2878



# Rectangle

The Rectangle color scheme consists of four colors that form a rectangle on the color wheel.



36.7886, 0.3625, 0.3398



36.7886, 0.3556, 0.3699



36.7886, 0.2654, 0.3148



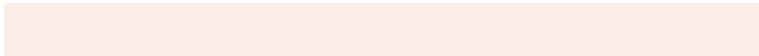
36.7886, 0.2708, 0.2882

# Sweetspot

The Sweet Spot groups the original color and five complimentary colors.



36.7903, 0.3625, 0.3398



86.3545, 0.3262, 0.3323



35.7757, 0.3225, 0.2759



18.4663, 0.3290, 0.3330



0.0000, 0.0000, 0.0000



21.4041, 0.3127, 0.3290



# Same Dimension

The Same Dimension uses a secret algorithm to generate beautiful new colors.



36.7903, 0.3625, 0.3398



60.3762, 0.3766, 0.3423



45.4525, 0.3551, 0.3704



10.3379, 0.3285, 0.3328



8.2906, 0.6224, 0.3440



0.4434, 0.5838, 0.3747

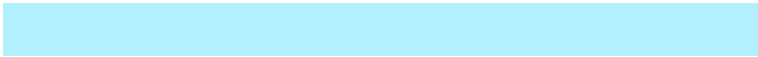


# Inverse Universe

The Inverse Universe completely reimagines the original color for something new.



45.5828, 0.2753, 0.3179



78.7352, 0.2678, 0.3152



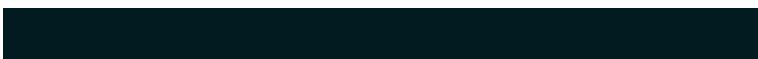
36.2990, 0.2723, 0.2838



11.1392, 0.2984, 0.3251



19.7222, 0.2102, 0.2767

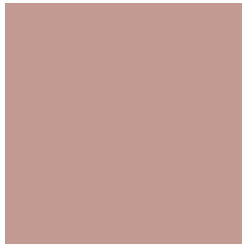


0.9286, 0.2138, 0.2895



# Previews

## White Background



This preview shows how the Yxy color 36.7886, 0.3625, 0.3398 looks on a white background.

## Color Contrast Check

Large Text (above 18pt) WCAG AA × Fail

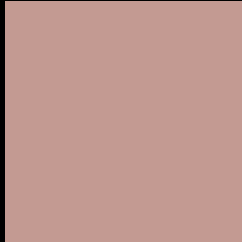
Any Text WCAG AA × Fail

Large Text (above 18pt) WCAG AAA × Fail

Any Text WCAG AAA × Fail



# Black Background



This preview shows how the Yxy color 36.7886, 0.3625, 0.3398 looks on a black background.

## Color Contrast Check

Large Text (above 18pt) WCAG AA ✓ Pass

Any Text WCAG AA ✓ Pass

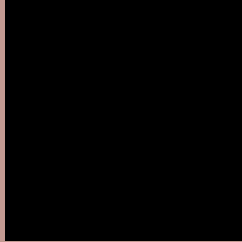
Large Text (above 18pt) WCAG AAA ✓ Pass

Any Text WCAG AAA ✓ Pass

If you want to check with other color combinations, try the [Color Contrast Checker](#).

**Yxy 36.7886, 0.3625, 0.3398**

## Background



This preview shows how black text looks on a background with the Yxy color 36.7886, 0.3625, 0.3398.



This preview shows how white text looks on a background with the Yxy color 36.7886, 0.3625, 0.3398.

# Color Blindness Simulation

Color vision deficiency is a very complex topic, and I could not describe the different causes any better than Wikipedia does, so if you want to learn more, you should check out their [article about color blindness](#).

## Dichromacy



### Original Color

36.7886, 0.3625, 0.3398

### Protanopia

36.9748, 0.3302, 0.3462

### Deuteranopia

36.9372, 0.3531, 0.3470



## Tritanopia

36.6479, 0.3481, 0.3134

# Trichromacy



## Original Color

36.7886, 0.3625, 0.3398

## Protanomaly

36.8952, 0.3416, 0.3445

## Deuteranomaly

36.9771, 0.3564, 0.3454

## Tritanomaly

36.6266, 0.3529, 0.3225

# Monochromacy



## Original Color

36.7886, 0.3625, 0.3398

## Achromatopsia

37.6262, 0.3127, 0.3290

## Achromatomaly

37.1885, 0.3300, 0.3332

# CSS Examples

## Text

The CSS property to change the color of the text to Yxy 36.7886, 0.3625, 0.3398 is called "color". The color property can be set on classes, ids or directly on the HTML element.

This example shows how text in the color `rgb(195, 154, 146)` looks like.

```
.text, #text, p{  
    color:rgb(195, 154, 146)  
}
```

If you want to add a text shadow in that color use the text-shadow property, you can generate a text shadow directly with our [CSS Text Shadow Generator](#).

Here you see how black text with a 4 pixel rgb(195, 154, 146) colored shadow looks like.

```
.shadow{ text-shadow: 4px 4px 2px rgb(195, 154, 146) }
```

## Border

The CSS property to change the border of an element to Yxy 36.7886, 0.3625, 0.3398 is called "border". The border property can be set on classes, ids or directly on the HTML element.

This example shows the color as border, it can be applied via the CSS property "border" or "border-color".

```
.border, #border, table{ border:4px solid rgb(195, 154, 146) }
```

If only the border color should be changed use the property `border-color`.

```
.border{ border-color:rgb(195, 154, 146) }
```

If you want to add a box shadow in that color use:

Here you see how a box with a 4 pixel `rgb(195, 154, 146)` colored shadow looks like.

```
.boxshadow{ -moz-box-shadow:4px 4px 4px  
4px rgb(195, 154, 146); -webkit-box-  
shadow:4px 4px 4px 4px rgb(195, 154, 146);  
box-shadow:4px 4px 4px 4px rgb(195, 154,  
146) }
```



# Background

The CSS property to change the background color of an element to Yxy 36.7886, 0.3625, 0.3398 is called "background". The background property can be set on classes, ids or directly on the HTML element.

```
.background, #background, body{  
background: rgb(195, 154, 146) }
```

If only the background color should be changed can be used:

```
.background{ background-color: rgb(195,  
154, 146) }
```

This example shows the color as background, it is applied via the CSS property "background".

To optimize and compress your CSS code, you can use our [online CSS compressor and optimizer](#) based on csstidy. If you want to create a linear or radial gradient as background or border, check our [CSS Gradient Generator](#).

Hey! You found this booklet interesting? Support Converting Colors with the new Membership Option!

The pro membership hides all ads, plus gives you double the colors in the color bucket, and more awesome pro features!

**[Learn more, Memberships starting at \\$2.50/m!](#)**

**Follow me  
on Twitter!**

@ConvertingColor