

# Converting Colors

$Yxy(36.8868, 0.3950, 0.3833)$

Have a look what the booklet for  
Yxy(36.8868, 0.3950, 0.3833)  
contains.

<b>Yxy(36.8851, 0.3950, 0.3833)</b> .....	3
<b><i>Conversions</i></b> .....	4
<b><i>Details</i></b> .....	6
<b><i>Harmonies</i></b> .....	12
<b><i>Previews</i></b> .....	24
<b><i>Color Blindness Simulation</i></b> .....	27
<b><i>CSS Examples</i></b> .....	30

# Color

**Yxy(36.8851, 0.3950, 0.3833)**

# Conversions

## Conversions Part 1

Format	Color
Hex	C59C73
RGB	197, 156, 115
RGB Percent	77%, 61%, 45%
CMY	0.2274, 0.3882, 0.5490
CMYK	0.00, 0.21, 0.42, 0.23
HSL	30°, 41%, 61%
HSV	30°, 42%, 77%
XYZ	38.0110, 36.8851, 21.3343
YIQ	163.5850, 37.5970, -4.0590

# Conversions

## Conversions Part 2

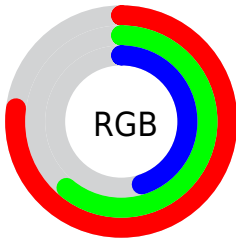
<b>Format</b>	<b>Color</b>
<b>RYB</b>	197, 197, 115
Decimal	12950643
CIELab	67.19, 9.80, 27.27
CIELCh	67, 28.975, 70.238
Yxy	36.8851, 0.3950, 0.3833
Android (android.graphics.Color)	4291140723 (0xFFC59C73)
YUV	163.5850, -23.9524, 29.3050
Hunter-Lab	60.7331, 5.4348, 21.6858

# Details

The Yxy color **36.8851, 0.3950, 0.3833** is a light color, and the websafe version is hex **CC9966**. A complement of this color would be **31.4557, 0.2464, 0.2669**, and the grayscale version is **37.0206, 0.3127, 0.3290**.

A 20% lighter version of the original color is **70.1432, 0.3796, 0.3736**, and **16.1592, 0.4197, 0.3985** is the 20% darker color. If you saturate the color by 10%, you get **33.3074, 0.4207, 0.3957**, and if you desaturate by 10%, it is **40.8314, 0.3714, 0.3700**.

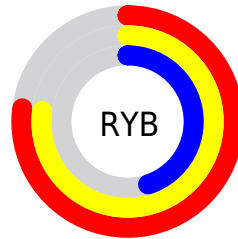
# Distribution



Red (77%)

Green (61%)

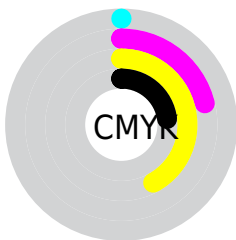
Blue (45%)



Red (77%)

Yellow (77%)

Blue (45%)

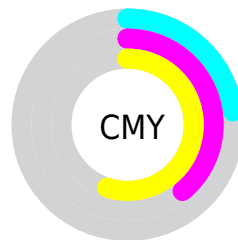


Cyan (0%)

Magenta (21%)

Yellow (42%)

Black (23%)



Cyan (23%)

Magenta (39%)


Yellow (55%)


# Brightness & Saturation Gradients

These gradients show how the Yxy color 36.8851, 0.3950, 0.3833 changes by changing the brightness by 10 percent. The first figure shows a shift by +10% for each color and the second figure -10%.


Similar to the brightness gradients but the following saturation gradients show a change of the Yxy color 36.8851, 0.3950, 0.3833 by changing the saturation by 10% instead.




 36.8851, 0.3950,  
0.3833


 36.8851, 0.3950,  
0.3833


332.8128, 0.3523,  
0.3565

 25.1185, 0.4060,  
0.3897


 70.3960, 0.3792,  
0.3737

 16.1654, 0.4201,  
0.3975


 92.9092, 0.3734,  
0.3701

 9.6413, 0.4389,  
0.4073


 119.7734, 0.3685,  
0.3670

 5.1618, 0.4647,  
0.4191

 151.3729, 0.3643,  
0.3643

 2.3425, 0.5199,  
0.4484

188.0922, 0.3607,  
0.3619

 0.7961, 0.5581,  
0.4419

230.3157, 0.3575,

 0.0000, 0.0000,

0.3599

0.0000

278.4278, 0.3548,  
0.3581

■ 36.8851, 0.3950,  
0.3833

■ 36.8851, 0.3950,  
0.3833

■ 33.3074, 0.4207,  
0.3957

■ 40.8314, 0.3714,  
0.3700

■ 30.0805, 0.4478,  
0.4061

■ 45.1528, 0.3503,  
0.3565

■ 27.1926, 0.4752,  
0.4134


■ 49.8623, 0.3316,  
0.3434


■ 24.6290, 0.5014,  
0.4163

■ 54.9705, 0.3152,  
0.3310

■ 22.3729, 0.5245,  
0.4138


■ 60.4875, 0.3009,  
0.3193

 20.7008, 0.5414,  
0.4084

 66.4230, 0.2884,  
0.3085

 72.7865, 0.2775,  
0.2986

 78.4006, 0.2772,  
0.3073

 84.1928, 0.2781,  
0.3179

# Harmonies

## Analogous

The Analogous color harmony consists of three colors that are next to each other on the color wheel.



36.8851, 0.3986, 0.3505



36.8851, 0.3950, 0.3833



36.8851, 0.3684, 0.4048

# Triad

The Triadic color harmony groups three colors that are evenly spaced from another and form a triangle on the color wheel.



36.8851, 0.3950, 0.3833



36.8851, 0.2511, 0.3388



36.8851, 0.2928, 0.2644

# Complementary

The Complementary color scheme is a pair of colors which are on the opposite of each other on the color wheel.



36.8851, 0.3950, 0.3833



31.4557, 0.2464, 0.2669

# Split Complementary

Split-complementary colors differ from the complementary color scheme. The scheme consists of three colors, the original color and two neighbors of the complement color.



36.8851, 0.2565, 0.2585



36.8851, 0.3950, 0.3833



36.8851, 0.2338, 0.2978

# Square

The Square scheme is like the rectangle color scheme, but the four colors are evenly spaced on the color wheel.



36.8851, 0.3950, 0.3833



36.8851, 0.2850, 0.3802



36.8851, 0.2358, 0.2695



36.8851, 0.3372, 0.2848



# Rectangle

The Rectangle color scheme consists of four colors that form a rectangle on the color wheel.



36.8851, 0.3950, 0.3833



36.8851, 0.3423, 0.4079



36.8851, 0.2358, 0.2695



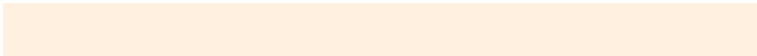
36.8851, 0.2793, 0.2607

# Sweetspot

The Sweet Spot groups the original color and five complimentary colors.



36.8868, 0.3950, 0.3833



88.8066, 0.3326, 0.3441



26.5795, 0.3630, 0.2735



18.7612, 0.3349, 0.3459



0.0000, 0.0000, 0.0000



21.4041, 0.3127, 0.3290



# Same Dimension

The Same Dimension uses a secret algorithm to generate beautiful new colors.



36.8868, 0.3950, 0.3833



60.1740, 0.4184, 0.3947



52.4293, 0.3748, 0.4293



11.4984, 0.3277, 0.3406



13.7812, 0.5394, 0.4099



0.7974, 0.5078, 0.4350

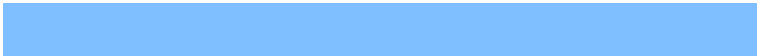


# Inverse Universe

The Inverse Universe completely reimagines the original color for something new.



31.4557, 0.2464, 0.2669



49.1433, 0.2320, 0.2502



20.2511, 0.2363, 0.2042



11.1491, 0.2983, 0.3172



8.6269, 0.1776, 0.1593

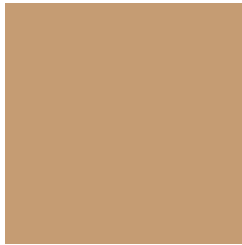


0.5534, 0.1881, 0.1973



# Previews

## White Background



This preview shows how the Yxy color 36.8851, 0.3950, 0.3833 looks on a white background.

## Color Contrast Check

Large Text (above 18pt) WCAG AA × Fail

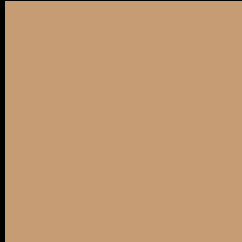
Any Text WCAG AA × Fail

Large Text (above 18pt) WCAG AAA × Fail

Any Text WCAG AAA × Fail



# Black Background



This preview shows how the Yxy color 36.8851, 0.3950, 0.3833 looks on a black background.

## Color Contrast Check

Large Text (above 18pt) WCAG AA ✓ Pass

Any Text WCAG AA ✓ Pass

Large Text (above 18pt) WCAG AAA ✓ Pass

Any Text WCAG AAA ✓ Pass

If you want to check with other color combinations, try the [Color Contrast Checker](#).

**Yxy 36.8851, 0.3950, 0.3833**

## Background



This preview shows how black text looks on a background with the Yxy color 36.8851, 0.3950, 0.3833.



This preview shows how white text looks on a background with the Yxy color 36.8851, 0.3950, 0.3833.

# Color Blindness Simulation

Color vision deficiency is a very complex topic, and I could not describe the different causes any better than Wikipedia does, so if you want to learn more, you should check out their [article about color blindness](#).

## Dichromacy



### Original Color

36.8851, 0.3950, 0.3833

### Protanopia

37.0890, 0.3664, 0.3945

### Deuteranopia

36.9538, 0.3923, 0.3850



## Tritanopia

36.9425, 0.3555, 0.3150

# Trichromacy



## Original Color

36.8851, 0.3950, 0.3833

## Protanomaly

36.9644, 0.3769, 0.3900

## Deuteranomaly

37.0875, 0.3934, 0.3848

## Tritanomaly

36.7494, 0.3704, 0.3397

# Monochromacy



## Original Color

36.8851, 0.3950, 0.3833

## Achromatopsia

37.1238, 0.3127, 0.3290

## Achromatomaly

36.7952, 0.3412, 0.3503

# CSS Examples

## Text

The CSS property to change the color of the text to Yxy 36.8851, 0.3950, 0.3833 is called "color". The color property can be set on classes, ids or directly on the HTML element.

This example shows how text in the color `rgb(197, 156, 115)` looks like.

```
.text, #text, p{  
    color:rgb(197, 156, 115)  
}
```

If you want to add a text shadow in that color use the text-shadow property, you can generate a text shadow directly with our [CSS Text Shadow Generator](#).

Here you see how black text with a 4 pixel rgb(197, 156, 115) colored shadow looks like.

```
.shadow{ text-shadow: 4px 4px 2px rgb(197, 156, 115) }
```

## Border

The CSS property to change the border of an element to Yxy 36.8851, 0.3950, 0.3833 is called "border". The border property can be set on classes, ids or directly on the HTML element.

This example shows the color as border, it can be applied via the CSS property "border" or "border-color".

```
.border, #border, table{ border:4px solid rgb(197, 156, 115) }
```

If only the border color should be changed use the property `border-color`.

```
.border{ border-color:rgb(197, 156, 115) }
```

If you want to add a box shadow in that color use:

Here you see how a box with a 4 pixel `rgb(197, 156, 115)` colored shadow looks like.

```
.boxshadow{ -moz-box-shadow:4px 4px 4px  
4px rgb(197, 156, 115); -webkit-box-  
shadow:4px 4px 4px 4px rgb(197, 156, 115);  
box-shadow:4px 4px 4px 4px rgb(197, 156,  
115) }
```



# Background

The CSS property to change the background color of an element to Yxy 36.8851, 0.3950, 0.3833 is called "background". The background property can be set on classes, ids or directly on the HTML element.

```
.background, #background, body{  
background: rgb(197, 156, 115) }
```

If only the background color should be changed can be used:

```
.background{ background-color: rgb(197,  
156, 115) }
```

This example shows the color as background, it is applied via the CSS property "background".

To optimize and compress your CSS code, you can use our [online CSS compressor and optimizer](#) based on csstidy. If you want to create a linear or radial gradient as background or border, check our [CSS Gradient Generator](#).

Hey! You found this booklet interesting? Support Converting Colors with the new Membership Option!

The pro membership hides all ads, plus gives you double the colors in the color bucket, and more awesome pro features!

**[Learn more, Memberships starting at \\$2.50/m!](#)**

**Follow me  
on Twitter!**

@ConvertingColor