

# Converting Colors

$Yxy(37.1068, 0.3735, 0.3279)$

Have a look what the booklet for  
Yxy(37.1068, 0.3735, 0.3279)  
contains.

|  |    |
|--|----|
| <b>Yxy(37.1068, 0.3735, 0.3279)</b> .....      | 3  |
| <b><i>Conversions</i></b> .....                | 4  |
| <b><i>Details</i></b> .....                    | 6  |
| <b><i>Harmonies</i></b> .....                  | 12 |
| <b><i>Previews</i></b> .....                   | 24 |
| <b><i>Color Blindness Simulation</i></b> ..... | 27 |
| <b><i>CSS Examples</i></b> .....               | 30 |

# Color

**Yxy(37.1068, 0.3735, 0.3279)**

# Conversions

## Conversions Part 1

| Format      | Color                      |
|-------------|----------------------------|
| Hex         | D09596                     |
| RGB         | 208, 149, 150              |
| RGB Percent | 82%, 58%, 59%              |
| CMY         | 0.1843, 0.4157, 0.4117     |
| CMYK        | 0.00, 0.28, 0.28, 0.18     |
| HSL         | 359°, 39%, 70%             |
| HSV         | 359°, 28%, 82%             |
| XYZ         | 42.2671, 37.1068, 33.7911  |
| YIQ         | 166.7550, 34.8430, 12.8190 |

# Conversions

## Conversions Part 2

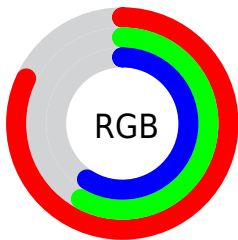
| <b>Format</b>                       | <b>Color</b>                  |
|-------------------------------------|-------------------------------|
| R <sub>Y</sub> B                    | 208, 149, 150                 |
| Decimal                             | 13669782                      |
| CIE Lab                             | 67.36, 22.35, 8.31            |
| CIE LCh                             | 67, 23.842, 20.402            |
| Yxy                                 | 37.1068, 0.3735,<br>0.3279    |
| Android<br>(android.graphics.Color) | 4291859862<br>(0xFFD09596)    |
| YUV                                 | 166.7550, -8.2602,<br>36.1719 |
| Hunter-Lab                          | 60.9154, 17.2533,<br>9.7513   |

# Details

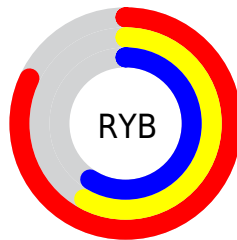
The Yxy color **37.1068, 0.3735, 0.3279** is a light color, and the websafe version is hex **CC9999**. A complement of this color would be **56.0111, 0.2724, 0.3302**, and the grayscale version is **38.5476, 0.3127, 0.3290**.

A 20% lighter version of the original color is **68.3315, 0.3529, 0.3281**, and **16.3116, 0.3929, 0.3275** is the 20% darker color. If you saturate the color by 10%, you get **30.5016, 0.4055, 0.3275**, and if you desaturate by 10%, it is **45.0058, 0.3476, 0.3283**.

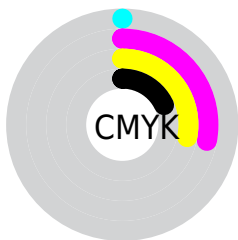
# Distribution



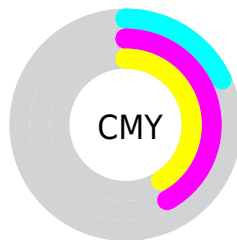
- Red (82%)
- Green (58%)
- Blue (59%)



- Red (82%)
- Yellow (58%)
- Blue (59%)



- Cyan (0%)
- Magenta (28%)
- Yellow (28%)
- Black (18%)




- Cyan (18%)
- Magenta (42%)
- Yellow (41%)


# Brightness & Saturation Gradients

These gradients show how the Yxy color 37.1068, 0.3735, 0.3279 changes by changing the brightness by 10 percent. The first figure shows a shift by +10% for each color and the second figure -10%.


Similar to the brightness gradients but the following saturation gradients show a change of the Yxy color 37.1068, 0.3735, 0.3279 by changing the saturation by 10% instead.





 37.1068, 0.3735,  
0.3279


 37.1068, 0.3735,  
0.3279


333.7727, 0.3417,  
0.3291

 25.2902, 0.3819,  
0.3274


 70.7370, 0.3616,  
0.3285

 16.2934, 0.3930,  
0.3266


 93.3194, 0.3572,  
0.3287

 9.7320, 0.4082,  
0.3252


120.2592, 0.3536,  
0.3288

 5.2216, 0.4305,  
0.3228

151.9407, 0.3505,  
0.3289

 2.3779, 0.4657,  
0.3177

188.7485, 0.3478,  
0.3289

 0.8145, 0.5583,  
0.3212

231.0668, 0.3455,

 0.0000, 1.0000,

0.3290

0.0000

279.2801, 0.3435,  
0.3290

0.0000, 0.0000,  
0.0000

37.1068, 0.3735,  
0.3279

37.1068, 0.3735,  
0.3279

30.5016, 0.4055,  
0.3275

45.0058, 0.3476,  
0.3283

25.1166, 0.4441,  
0.3273

54.2568, 0.3268,  
0.3287

20.8784, 0.4885,  
0.3271

64.9210, 0.3103,  
0.3291

17.7040, 0.5361,  
0.3273

77.0539, 0.2970,  
0.3294

15.4993, 0.5811,  
0.3277

90.7085, 0.2863,  
0.3297

■ 14.1532, 0.6161,  
0.3285

■ 92.1512, 0.2849,  
0.3289

■ 13.5000, 0.6361,  
0.3291

■ 13.4190, 0.6385,  
0.3291

# Harmonies

## Analogous

The Analogous color harmony consists of three colors that are next to each other on the color wheel.



37.1068, 0.3451, 0.3002



37.1068, 0.3735, 0.3279



37.1068, 0.3846, 0.3573

# Triad

The Triadic color harmony groups three colors that are evenly spaced from another and form a triangle on the color wheel.



37.1068, 0.3735, 0.3279



37.1068, 0.3134, 0.3860



37.1068, 0.2529, 0.2751

# Complementary

The Complementary color scheme is a pair of colors which are on the opposite of each other on the color wheel.



37.1068, 0.3735, 0.3279



56.0111, 0.2724, 0.3302

# Split Complementary

Split-complementary colors differ from the complementary color scheme. The scheme consists of three colors, the original color and two neighbors of the complement color.



37.1068, 0.2458, 0.2944



37.1068, 0.3735, 0.3279



37.1068, 0.2794, 0.3601

# Square

The Square scheme is like the rectangle color scheme, but the four colors are evenly spaced on the color wheel.



37.1068, 0.3735, 0.3279



37.1068, 0.3486, 0.3934



37.1068, 0.2551, 0.3254



37.1068, 0.2753, 0.2704



# Rectangle

The Rectangle color scheme consists of four colors that form a rectangle on the color wheel.



37.1068, 0.3735, 0.3279



37.1068, 0.3804, 0.3746



37.1068, 0.2551, 0.3254



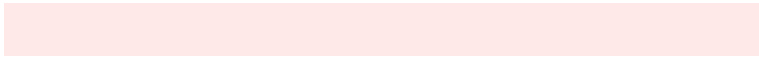
37.1068, 0.2487, 0.2800

# Sweetspot

The Sweet Spot groups the original color and five complimentary colors.



37.1085, 0.3735, 0.3279



84.8527, 0.3282, 0.3287



39.1775, 0.3142, 0.2586



17.6754, 0.3310, 0.3286



0.0000, 0.0000, 0.0000



21.4041, 0.3127, 0.3290



# Same Dimension

The Same Dimension uses a secret algorithm to generate beautiful new colors.



37.1085, 0.3735, 0.3279



52.2700, 0.3920, 0.3277



46.8433, 0.3651, 0.3634



11.8115, 0.3288, 0.3286



8.3641, 0.6381, 0.3289



0.4688, 0.6314, 0.3252



# Inverse Universe

The Inverse Universe completely reimagines the original color for something new.



37.1085, 0.3735, 0.3279



52.2700, 0.3920, 0.3277



43.7775, 0.2680, 0.2919



11.8115, 0.3288, 0.3286



8.3641, 0.6381, 0.3289

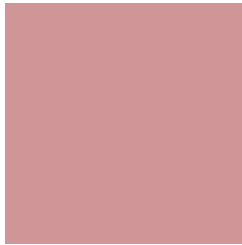


0.4688, 0.6314, 0.3252



# Previews

## White Background



This preview shows how the Yxy color 37.1068, 0.3735, 0.3279 looks on a white background.

## Color Contrast Check

Large Text (above 18pt) WCAG AA × Fail

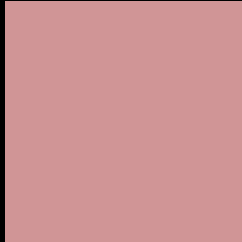
Any Text WCAG AA × Fail

Large Text (above 18pt) WCAG AAA × Fail

Any Text WCAG AAA × Fail



# Black Background



This preview shows how the Yxy color 37.1068, 0.3735, 0.3279 looks on a black background.

## Color Contrast Check

Large Text (above 18pt) WCAG AA ✓ Pass

Any Text WCAG AA ✓ Pass

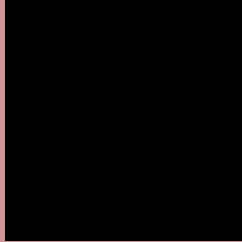
Large Text (above 18pt) WCAG AAA ✓ Pass

Any Text WCAG AAA ✓ Pass

If you want to check with other color combinations, try the [Color Contrast Checker](#).

**Yxy 37.1068, 0.3735, 0.3279**

## Background



This preview shows how black text looks on a background with the Yxy color 37.1068, 0.3735, 0.3279.



This preview shows how white text looks on a background with the Yxy color 37.1068, 0.3735, 0.3279.

# Color Blindness Simulation

Color vision deficiency is a very complex topic, and I could not describe the different causes any better than Wikipedia does, so if you want to learn more, you should check out their [article about color blindness](#).

## Dichromacy



### Original Color

37.1068, 0.3735, 0.3279

### Protanopia

37.4546, 0.3227, 0.3376

### Deuteranopia

37.0309, 0.3501, 0.3428



## Tritanopia

37.2383, 0.3653, 0.3153

# Trichromacy



## Original Color

37.1068, 0.3735, 0.3279

## Protanomaly

37.2301, 0.3401, 0.3346

## Deuteranomaly

37.0819, 0.3582, 0.3371

## Tritanomaly

37.1354, 0.3685, 0.3191

# Monochromacy



## Original Color

37.1068, 0.3735, 0.3279

## Achromatopsia

38.6429, 0.3127, 0.3290

## Achromatomaly

37.6599, 0.3332, 0.3277

# CSS Examples

## Text

The CSS property to change the color of the text to Yxy 37.1068, 0.3735, 0.3279 is called "color". The color property can be set on classes, ids or directly on the HTML element.

This example shows how text in the color `rgb(208, 149, 150)` looks like.

```
.text, #text, p{  
    color:rgb(208, 149, 150)  
}
```

If you want to add a text shadow in that color use the text-shadow property, you can generate a text shadow directly with our [CSS Text Shadow Generator](#).

Here you see how black text with a 4 pixel rgb(208, 149, 150) colored shadow looks like.

```
.shadow{ text-shadow: 4px 4px 2px rgb(208, 149, 150) }
```

## Border

The CSS property to change the border of an element to Yxy 37.1068, 0.3735, 0.3279 is called "border". The border property can be set on classes, ids or directly on the HTML element.

This example shows the color as border, it can be applied via the CSS property "border" or "border-color".

```
.border, #border, table{ border:4px solid rgb(208, 149, 150) }
```

If only the border color should be changed use the property `border-color`.

```
.border{ border-color:rgb(208, 149, 150) }
```

If you want to add a box shadow in that color use:

Here you see how a box with a 4 pixel `rgb(208, 149, 150)` colored shadow looks like.

```
.boxshadow{ -moz-box-shadow:4px 4px 4px  
4px rgb(208, 149, 150); -webkit-box-  
shadow:4px 4px 4px 4px rgb(208, 149, 150);  
box-shadow:4px 4px 4px 4px rgb(208, 149,  
150) }
```



# Background

The CSS property to change the background color of an element to Yxy 37.1068, 0.3735, 0.3279 is called "background". The background property can be set on classes, ids or directly on the HTML element.

```
.background, #background, body{  
background: rgb(208, 149, 150) }
```

If only the background color should be changed can be used:

```
.background{ background-color: rgb(208,  
149, 150) }
```

This example shows the color as background, it is applied via the CSS property "background".

To optimize and compress your CSS code, you can use our [online CSS compressor and optimizer](#) based on csstidy. If you want to create a linear or radial gradient as background or border, check our [CSS Gradient Generator](#).

Hey! You found this booklet interesting? Support Converting Colors with the new Membership Option!

The pro membership hides all ads, plus gives you double the colors in the color bucket, and more awesome pro features!

**[Learn more, Memberships starting at \\$2.50/m!](#)**

**Follow me  
on Twitter!**

@ConvertingColor