

Converting Colors

$Yxy(37.1460, 0.3400, 0.3234)$

Have a look what the booklet for
Yxy(37.1460, 0.3400, 0.3234)
contains.

Yxy(37.0415, 0.3399, 0.3223)	3
Conversions	4
Details	6
Harmonies	12
Previews	24
Color Blindness Simulation	27
CSS Examples	30

Color

Yxy(37.0415, 0.3399, 0.3223)

Conversions

Conversions Part 1

Format	Color
Hex	BC9CA1
RGB	188, 156, 161
RGB Percent	74%, 61%, 63%
CMY	0.2627, 0.3882, 0.3685
CMYK	0.00, 0.17, 0.14, 0.26
HSL	351°, 19%, 67%
HSV	351°, 17%, 74%
XYZ	39.0642, 37.0415, 38.8229
YIQ	166.1380, 17.4670, 8.3390

Conversions

Conversions Part 2

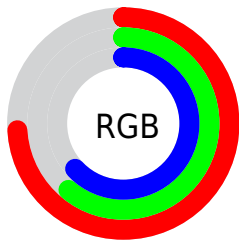
Format	Color
R_{YB}	188, 156, 161
Decimal	12360865
CIE _{Lab}	67.31, 12.66, 1.81
CIE _{LCh}	67, 12.792, 8.153
Yxy	37.0415, 0.3399, 0.3223
Android (android.graphics.Color)	4290550945 (0xFFBC9CA1)
YUV	166.1380, -2.5330, 19.1730
Hunter-Lab	60.8617, 8.0626, 4.7829

Details

The Yxy color **37.0415, 0.3399, 0.3223** is a light color, and the websafe version is hex **CC9999**. A complement of this color would be **46.4561, 0.2909, 0.3358**, and the grayscale version is **38.2115, 0.3127, 0.3290**.

A 20% lighter version of the original color is **70.7795, 0.3340, 0.3238**, and **16.2973, 0.3473, 0.3198** is the 20% darker color. If you saturate the color by 10%, you get **30.6901, 0.3611, 0.3181**, and if you desaturate by 10%, it is **44.4437, 0.3227, 0.3263**.

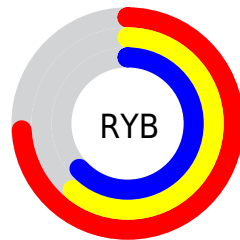
Distribution



Red (74%)

Green (61%)

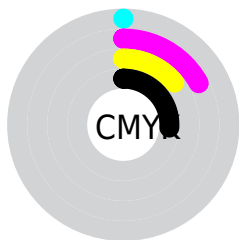
Blue (63%)



Red (74%)

Yellow (61%)

Blue (63%)

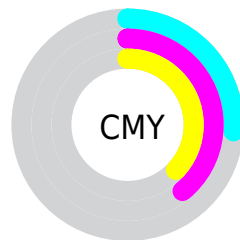


Cyan (0%)

Magenta (17%)

Yellow (14%)

Black (26%)



Cyan (26%)


Magenta (39%)


Yellow (37%)

Brightness & Saturation Gradients

These gradients show how the Yxy color 37.0415, 0.3399, 0.3223 changes by changing the brightness by 10 percent. The first figure shows a shift by +10% for each color and the second figure -10%.


Similar to the brightness gradients but the following saturation gradients show a change of the Yxy color 37.0415, 0.3399, 0.3223 by changing the saturation by 10% instead.


 37.0415, 0.3399,
0.3223


 37.0415, 0.3399,
0.3223


333.4902, 0.3257,
0.3259

 25.2396, 0.3436,
0.3213


 70.6366, 0.3346,
0.3236

 16.2557, 0.3485,
0.3201


 93.1986, 0.3327,
0.3241

 9.7053, 0.3553,
0.3183


120.1162, 0.3310,
0.3245

 5.2040, 0.3652,
0.3156

151.7736, 0.3297,
0.3249

 2.3674, 0.3811,
0.3112

188.5553, 0.3285,
0.3252

 0.8091, 0.4132,
0.3037

230.8457, 0.3274,

 0.0000, 1.0000,

0.3254

0.0000

279.0292, 0.3265,
0.3257

0.0000, 0.0000,
0.0000

37.0415, 0.3399,
0.3223

37.0415, 0.3399,
0.3223

30.6901, 0.3611,
0.3181

44.4437, 0.3227,
0.3263

25.3370, 0.3872,
0.3139

52.9361, 0.3089,
0.3301

20.9329, 0.4187,
0.3100

62.5622, 0.2977,
0.3335

17.4222, 0.4556,
0.3070

73.3616, 0.2886,
0.3367

14.7433, 0.4970,
0.3056

85.3720, 0.2811,
0.3395

■ 12.8272, 0.5398,
0.3065

■ 89.4326, 0.2742,
0.3289

■ 11.5934, 0.5794,
0.3102

■ 10.9310, 0.6104,
0.3163

■ 10.7841, 0.6180,
0.3178

Harmonies

Analogous

The Analogous color harmony consists of three colors that are next to each other on the color wheel.



37.0415, 0.3226, 0.3078



37.0415, 0.3399, 0.3223



37.0415, 0.3499, 0.3388

Triad

The Triadic color harmony groups three colors that are evenly spaced from another and form a triangle on the color wheel.



37.0415, 0.3399, 0.3223



37.0415, 0.3216, 0.3617



37.0415, 0.2771, 0.3035

Complementary

The Complementary color scheme is a pair of colors which are on the opposite of each other on the color wheel.



37.0415, 0.3399, 0.3223



46.4561, 0.2909, 0.3358

Split Complementary

Split-complementary colors differ from the complementary color scheme. The scheme consists of three colors, the original color and two neighbors of the complement color.



37.0415, 0.2770, 0.3173



37.0415, 0.3399, 0.3223



37.0415, 0.3022, 0.3517

Square

The Square scheme is like the rectangle color scheme, but the four colors are evenly spaced on the color wheel.



37.0415, 0.3399, 0.3223



37.0415, 0.3390, 0.3621



37.0415, 0.2860, 0.3351



37.0415, 0.2865, 0.2969

Rectangle

The Rectangle color scheme consists of four colors that form a rectangle on the color wheel.



37.0415, 0.3399, 0.3223



37.0415, 0.3508, 0.3490



37.0415, 0.2860, 0.3351



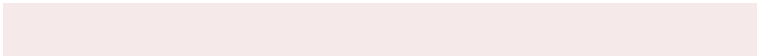
37.0415, 0.2760, 0.3074

Sweetspot

The Sweet Spot groups the original color and five complimentary colors.



37.0432, 0.3399, 0.3223



83.3739, 0.3198, 0.3271



37.4349, 0.3096, 0.2868



17.7069, 0.3209, 0.3268



95.5105, 0.3127, 0.3290



19.5994, 0.3127, 0.3290

Same Dimension

The Same Dimension uses a secret algorithm to generate beautiful new colors.



37.0432, 0.3399, 0.3223



63.1217, 0.3464, 0.3209



40.6089, 0.3425, 0.3434



9.5602, 0.3264, 0.3254



7.3488, 0.6156, 0.3165



0.2957, 0.5573, 0.2844

Inverse Universe

The Inverse Universe completely reimagines the original color for something new.



37.0432, 0.3399, 0.3223



63.1217, 0.3464, 0.3209



42.2773, 0.2867, 0.3142



9.5602, 0.3264, 0.3254



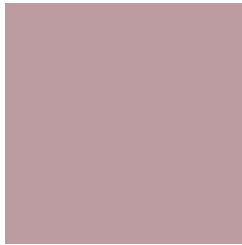
7.3488, 0.6156, 0.3165



0.2957, 0.5573, 0.2844

Previews

White Background



This preview shows how the Yxy color 37.0415, 0.3399, 0.3223 looks on a white background.

Color Contrast Check

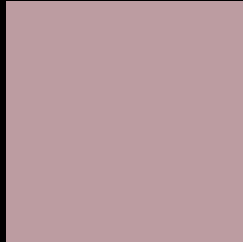
Large Text (above 18pt) WCAG AA × Fail

Any Text WCAG AA × Fail

Large Text (above 18pt) WCAG AAA × Fail

Any Text WCAG AAA × Fail

Black Background



This preview shows how the Yxy color 37.0415, 0.3399, 0.3223 looks on a black background.

Color Contrast Check

Large Text (above 18pt) WCAG AA ✓ Pass

Any Text WCAG AA ✓ Pass

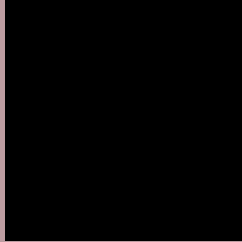
Large Text (above 18pt) WCAG AAA ✓ Pass

Any Text WCAG AAA ✓ Pass

If you want to check with other color combinations, try the [Color Contrast Checker](#).

Yxy 37.0415, 0.3399, 0.3223

Background



This preview shows how black text looks on a background with the Yxy color 37.0415, 0.3399, 0.3223.



This preview shows how white text looks on a background with the Yxy color 37.0415, 0.3399, 0.3223.

Color Blindness Simulation

Color vision deficiency is a very complex topic, and I could not describe the different causes any better than Wikipedia does, so if you want to learn more, you should check out their [article about color blindness](#).

Dichromacy



Original Color

37.0415, 0.3399, 0.3223

Protanopia

37.1265, 0.3147, 0.3262

Deuteranopia

37.1932, 0.3324, 0.3263



Tritanopia

37.0515, 0.3353, 0.3131

Trichromacy



Original Color

37.0415, 0.3399, 0.3223

Protanomaly

36.9359, 0.3236, 0.3235

Deuteranomaly

37.2173, 0.3355, 0.3250

Tritanomaly

36.9781, 0.3372, 0.3157

Monochromacy



Original Color

37.0415, 0.3399, 0.3223

Achromatopsia

38.1326, 0.3127, 0.3290

Achromatomaly

37.5197, 0.3224, 0.3262

CSS Examples

Text

The CSS property to change the color of the text to Yxy 37.0415, 0.3399, 0.3223 is called "color". The color property can be set on classes, ids or directly on the HTML element.

This example shows how text in the color `rgb(188, 156, 161)` looks like.

```
.text, #text, p{  
    color:rgb(188, 156, 161)  
}
```

If you want to add a text shadow in that color use the text-shadow property, you can generate a text shadow directly with our [CSS Text Shadow Generator](#).

Here you see how black text with a 4 pixel rgb(188, 156, 161) colored shadow looks like.

```
.shadow{ text-shadow: 4px 4px 2px rgb(188, 156, 161) }
```

Border

The CSS property to change the border of an element to Yxy 37.0415, 0.3399, 0.3223 is called "border". The border property can be set on classes, ids or directly on the HTML element.

This example shows the color as border, it can be applied via the CSS property "border" or "border-color".

```
.border, #border, table{ border:4px solid rgb(188, 156, 161) }
```

If only the border color should be changed use the property `border-color`.

```
.border{ border-color:rgb(188, 156, 161) }
```

If you want to add a box shadow in that color use:

Here you see how a box with a 4 pixel `rgb(188, 156, 161)` colored shadow looks like.

```
.boxshadow{ -moz-box-shadow:4px 4px 4px  
4px rgb(188, 156, 161); -webkit-box-  
shadow:4px 4px 4px 4px rgb(188, 156, 161);  
box-shadow:4px 4px 4px 4px rgb(188, 156,  
161) }
```


Background

The CSS property to change the background color of an element to Yxy 37.0415, 0.3399, 0.3223 is called "background". The background property can be set on classes, ids or directly on the HTML element.

```
.background, #background, body{  
background: rgb(188, 156, 161) }
```

If only the background color should be changed can be used:

```
.background{ background-color: rgb(188,  
156, 161) }
```

This example shows the color as background, it is applied via the CSS property "background".

To optimize and compress your CSS code, you can use our [online CSS compressor and optimizer](#) based on csstidy. If you want to create a linear or radial gradient as background or border, check our [CSS Gradient Generator](#).

Hey! You found this booklet interesting? Support Converting Colors with the new Membership Option!

The pro membership hides all ads, plus gives you double the colors in the color bucket, and more awesome pro features!

[Learn more, Memberships starting at \\$2.50/m!](#)

**Follow me
on Twitter!**

@ConvertingColor