

Converting Colors

$Yxy(37.2259, 0.3590, 0.3362)$

Have a look what the booklet for
Yxy(37.2259, 0.3590, 0.3362)
contains.

Yxy(37.2468, 0.3582, 0.3358)	3
Conversions	4
Details	6
Harmonies	12
Previews	24
Color Blindness Simulation	27
CSS Examples	30

Color

Yxy(37.2468, 0.3582, 0.3358)

Conversions

Conversions Part 1

Format	Color
Hex	C39B96
RGB	195, 155, 150
RGB Percent	76%, 61%, 59%
CMY	0.2353, 0.3921, 0.4118
CMYK	0.00, 0.21, 0.23, 0.24
HSL	7°, 27%, 68%
HSV	7°, 23%, 76%
XYZ	39.7314, 37.2468, 33.9414
YIQ	166.3900, 25.4450, 6.9250

Conversions

Conversions Part 2

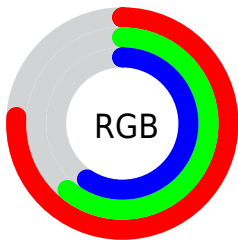
Format	Color
RYB	195, 156, 150
Decimal	12819350
CIELab	67.46, 14.10, 8.29
CIELCh	67, 16.361, 30.448
Yxy	37.2468, 0.3582, 0.3358
Android (android.graphics.Color)	4291009430 (0xFFC39B96)
YUV	166.3900, -8.0803, 25.0910
Hunter-Lab	61.0302, 9.4030, 9.7475

Details

The Yxy color **37.2468, 0.3582, 0.3358** is a light color, and the websafe version is hex **CC9999**. A complement of this color would be **47.2409, 0.2784, 0.3221**, and the grayscale version is **38.3629, 0.3127, 0.3290**.

A 20% lighter version of the original color is **71.1483, 0.3492, 0.3353**, and **16.4642, 0.3736, 0.3382** is the 20% darker color. If you saturate the color by 10%, you get **31.3128, 0.3855, 0.3390**, and if you desaturate by 10%, it is **44.1161, 0.3358, 0.3327**.

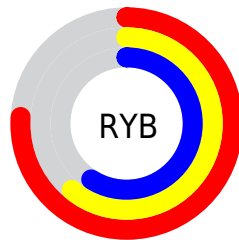
Distribution



Red (76%)

Green (61%)

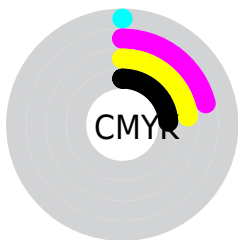
Blue (59%)



Red (76%)

Yellow (61%)

Blue (59%)

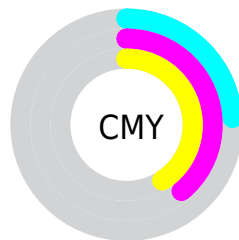


Cyan (0%)

Magenta (21%)

Yellow (23%)

Black (24%)



Cyan (24%)


Magenta (39%)


Yellow (41%)

Brightness & Saturation Gradients


These gradients show how the Yxy color 37.2468, 0.3582, 0.3358 changes by changing the brightness by 10 percent. The first figure shows a shift by +10% for each color and the second figure -10%.


Similar to the brightness gradients but the following saturation gradients show a change of the Yxy color 37.2468, 0.3582, 0.3358 by changing the saturation by 10% instead.


 37.2468, 0.3582,
0.3358


 37.2468, 0.3582,
0.3358


334.3778, 0.3344,
0.3327

 25.3986, 0.3645,
0.3365


 70.9522, 0.3493,
0.3347

 16.3743, 0.3728,
0.3373

 93.5782, 0.3460,
0.3343

 9.7894, 0.3842,
0.3382


120.5657, 0.3433,
0.3339

 5.2595, 0.4009,
0.3393

152.2989, 0.3410,
0.3336

 2.4003, 0.4276,
0.3400

189.1623, 0.3390,
0.3333

 0.8261, 0.5038,
0.3577

231.5404, 0.3373,

 0.0000, 1.0000,

0.3331

0.0000

279.8174, 0.3358,
0.3329

0.0000, 0.0000,
0.0000

37.2468, 0.3582,
0.3358

37.2468, 0.3582,
0.3358

31.3128, 0.3855,
0.3390

44.1161, 0.3358,
0.3327

26.2687, 0.4183,
0.3420

51.9534, 0.3176,
0.3298

22.0731, 0.4569,
0.3445

60.7960, 0.3028,
0.3272

18.6791, 0.4999,
0.3461

70.6778, 0.2906,
0.3248

16.0355, 0.5445,
0.3461

81.6310, 0.2806,
0.3226

■ 14.0850, 0.5854,
0.3440

■ 90.3426, 0.2778,
0.3289

■ 12.7618, 0.6164,
0.3399

■ 12.1672, 0.6312,
0.3370

Harmonies

Analogous

The Analogous color harmony consists of three colors that are next to each other on the color wheel.



37.2468, 0.3424, 0.3153



37.2468, 0.3582, 0.3358



37.2468, 0.3612, 0.3556

Triad

The Triadic color harmony groups three colors that are evenly spaced from another and form a triangle on the color wheel.



37.2468, 0.3582, 0.3358



37.2468, 0.3053, 0.3626



37.2468, 0.2754, 0.2894

Complementary

The Complementary color scheme is a pair of colors which are on the opposite of each other on the color wheel.



37.2468, 0.3582, 0.3358



47.2409, 0.2784, 0.3221

Split Complementary

Split-complementary colors differ from the complementary color scheme. The scheme consists of three colors, the original color and two neighbors of the complement color.



37.2468, 0.2664, 0.3000



37.2468, 0.3582, 0.3358



37.2468, 0.2832, 0.3427

Square

The Square scheme is like the rectangle color scheme, but the four colors are evenly spaced on the color wheel.



37.2468, 0.3582, 0.3358



37.2468, 0.3300, 0.3724



37.2468, 0.2692, 0.3194



37.2468, 0.2942, 0.2891

Rectangle

The Rectangle color scheme consists of four colors that form a rectangle on the color wheel.



37.2468, 0.3582, 0.3358



37.2468, 0.3555, 0.3657



37.2468, 0.2692, 0.3194



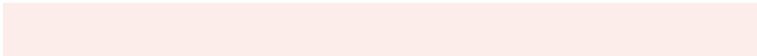
37.2468, 0.2711, 0.2918

Sweetspot

The Sweet Spot groups the original color and five complimentary colors.



37.2485, 0.3582, 0.3358



87.1888, 0.3245, 0.3310



37.1492, 0.3195, 0.2776



18.9022, 0.3256, 0.3312



0.0000, 0.0000, 0.0000



21.4041, 0.3127, 0.3290

Same Dimension

The Same Dimension uses a secret algorithm to generate beautiful new colors.



37.2485, 0.3582, 0.3358



60.8231, 0.3721, 0.3375



45.2463, 0.3520, 0.3641



10.2548, 0.3286, 0.3316



7.9709, 0.6297, 0.3382



0.4061, 0.5995, 0.3622

Inverse Universe

The Inverse Universe completely reimagines the original color for something new.



47.2409, 0.2784, 0.3221



82.0139, 0.2710, 0.3203



38.4244, 0.2760, 0.2911



11.2303, 0.2984, 0.3264



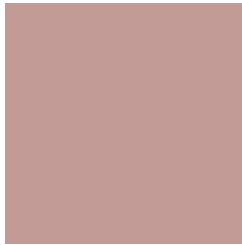
22.1233, 0.2150, 0.2939



1.0117, 0.2173, 0.3024

Previews

White Background



This preview shows how the Yxy color 37.2468, 0.3582, 0.3358 looks on a white background.

Color Contrast Check

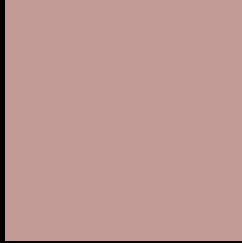
Large Text (above 18pt) WCAG AA × Fail

Any Text WCAG AA × Fail

Large Text (above 18pt) WCAG AAA × Fail

Any Text WCAG AAA × Fail

Black Background



This preview shows how the Yxy color 37.2468, 0.3582, 0.3358 looks on a black background.

Color Contrast Check

Large Text (above 18pt) WCAG AA ✓ Pass

Any Text WCAG AA ✓ Pass

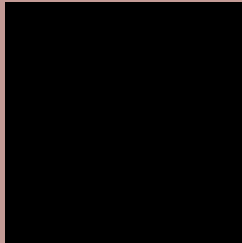
Large Text (above 18pt) WCAG AAA ✓ Pass

Any Text WCAG AAA ✓ Pass

If you want to check with other color combinations, try the [Color Contrast Checker](#).

Yxy 37.2468, 0.3582, 0.3358

Background



This preview shows how black text looks on a background with the Yxy color 37.2468, 0.3582, 0.3358.



This preview shows how white text looks on a background with the Yxy color 37.2468, 0.3582, 0.3358.

Color Blindness Simulation

Color vision deficiency is a very complex topic, and I could not describe the different causes any better than Wikipedia does, so if you want to learn more, you should check out their [article about color blindness](#).

Dichromacy



Original Color

37.2468, 0.3582, 0.3358

Protanopia

37.4635, 0.3264, 0.3419

Deuteranopia

37.4053, 0.3489, 0.3428



Tritanopia

37.3694, 0.3457, 0.3135

Trichromacy



Original Color

37.2468, 0.3582, 0.3358

Protanomaly

37.3734, 0.3376, 0.3402

Deuteranomaly

37.4425, 0.3522, 0.3413

Tritanomaly

37.3850, 0.3494, 0.3212

Monochromacy



Original Color

37.2468, 0.3582, 0.3358

Achromatopsia

38.1326, 0.3127, 0.3290

Achromatomaly

37.7258, 0.3289, 0.3318

CSS Examples

Text

The CSS property to change the color of the text to Yxy 37.2468, 0.3582, 0.3358 is called "color". The color property can be set on classes, ids or directly on the HTML element.

This example shows how text in the color `rgb(195, 155, 150)` looks like.

```
.text, #text, p{  
    color:rgb(195, 155, 150)  
}
```

If you want to add a text shadow in that color use the text-shadow property, you can generate a text shadow directly with our [CSS Text Shadow Generator](#).

Here you see how black text with a 4 pixel rgb(195, 155, 150) colored shadow looks like.

```
.shadow{ text-shadow: 4px 4px 2px rgb(195, 155, 150) }
```

Border

The CSS property to change the border of an element to Yxy 37.2468, 0.3582, 0.3358 is called "border". The border property can be set on classes, ids or directly on the HTML element.

This example shows the color as border, it can be applied via the CSS property "border" or "border-color".

```
.border, #border, table{ border:4px solid rgb(195, 155, 150) }
```

If only the border color should be changed use the property `border-color`.

```
.border{ border-color:rgb(195, 155, 150) }
```

If you want to add a box shadow in that color use:

Here you see how a box with a 4 pixel `rgb(195, 155, 150)` colored shadow looks like.

```
.boxshadow{ -moz-box-shadow:4px 4px 4px  
4px rgb(195, 155, 150); -webkit-box-  
shadow:4px 4px 4px 4px rgb(195, 155, 150);  
box-shadow:4px 4px 4px 4px rgb(195, 155,  
150) }
```


Background

The CSS property to change the background color of an element to Yxy 37.2468, 0.3582, 0.3358 is called "background". The background property can be set on classes, ids or directly on the HTML element.

```
.background, #background, body{  
background: rgb(195, 155, 150) }
```

If only the background color should be changed can be used:

```
.background{ background-color: rgb(195,  
155, 150) }
```

This example shows the color as background, it is applied via the CSS property "background".

To optimize and compress your CSS code, you can use our [online CSS compressor and optimizer](#) based on csstidy. If you want to create a linear or radial gradient as background or border, check our [CSS Gradient Generator](#).

Hey! You found this booklet interesting? Support Converting Colors with the new Membership Option!

The pro membership hides all ads, plus gives you double the colors in the color bucket, and more awesome pro features!

[Learn more, Memberships starting at \\$2.50/m!](#)

**Follow me
on Twitter!**

@ConvertingColor