

Converting Colors

Yxy(37.4144, 0.3708, 0.3393)

Have a look what the booklet for
Yxy(37.4144, 0.3708, 0.3393)
contains.

Yxy(37.3834, 0.3711, 0.3396)	3
<i>Conversions</i>	4
<i>Details</i>	6
<i>Harmonies</i>	12
<i>Previews</i>	24
<i>Color Blindness Simulation</i>	27
<i>CSS Examples</i>	30

Color

Yxy(37.3834, 0.3711, 0.3396)

Conversions

Conversions Part 1

Format	Color
Hex	CA9991
RGB	202, 153, 145
RGB Percent	79%, 60%, 57%
CMY	0.2080, 0.3999, 0.4314
CMYK	0.00, 0.24, 0.28, 0.21
HSL	8°, 35%, 68%
HSV	8°, 28%, 79%
XYZ	40.8509, 37.3834, 31.8463
YIQ	166.7390, 31.7720, 7.9000

Conversions

Conversions Part 2

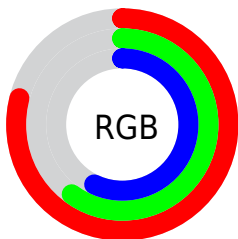
Format	Color
R_{YB}	202, 154, 145
Decimal	13277585
CIE Lab	67.56, 17.14, 11.32
CIE LCh	68, 20.543, 33.428
Yxy	37.3834, 0.3711, 0.3396
Android (android.graphics.Color)	4291467665 (0xFFCA9991)
YUV	166.7390, -10.7173, 30.9239
Hunter-Lab	61.1420, 12.2632, 11.9176

Details

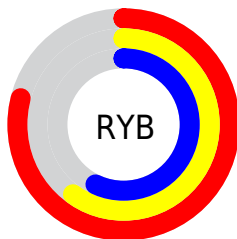
The Yxy color **37.3834, 0.3711, 0.3396** is a light color, and the websafe version is hex **CC9999**. A complement of this color would be **48.8340, 0.2710, 0.3181**, and the grayscale version is **38.5512, 0.3127, 0.3290**.

A 20% lighter version of the original color is **70.4953, 0.3557, 0.3384**, and **16.5320, 0.3894, 0.3415** is the 20% darker color. If you saturate the color by 10%, you get **31.5432, 0.4007, 0.3435**, and if you desaturate by 10%, it is **44.1636, 0.3466, 0.3357**.

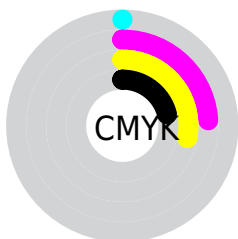
Distribution



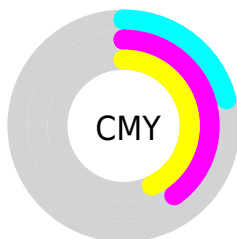
- Red (79%)
- Green (60%)
- Blue (57%)



- Red (79%)
- Yellow (60%)
- Blue (57%)



- Cyan (0%)
- Magenta (24%)
- Yellow (28%)
- Black (21%)



- Cyan (21%)
- Magenta (40%)
- Yellow (43%)

Brightness & Saturation Gradients


These gradients show how the Yxy color 37.3834, 0.3711, 0.3396 changes by changing the brightness by 10 percent. The first figure shows a shift by +10% for each color and the second figure -10%.


Similar to the brightness gradients but the following saturation gradients show a change of the Yxy color 37.3834, 0.3711, 0.3396 by changing the saturation by 10% instead.


 37.3834, 0.3711,
0.3396


 37.3834, 0.3711,
0.3396


334.9675, 0.3406,
0.3348

 25.5045, 0.3792,
0.3406


 71.1621, 0.3597,
0.3380

 16.4533, 0.3898,
0.3418


 93.8306, 0.3555,
0.3373

 9.8455, 0.4044,
0.3432


120.8645, 0.3520,
0.3367

 5.2966, 0.4256,
0.3445

152.6480, 0.3490,
0.3362

 2.4223, 0.4591,
0.3452

189.5657, 0.3464,
0.3358

 0.8373, 0.5704,
0.3755

232.0019, 0.3442,

 0.0000, 1.0000,

0.3354

0.0000

280.3411, 0.3423,
0.3351

0.0000, 0.0000,
0.0000

37.3834, 0.3711,
0.3396

37.3834, 0.3711,
0.3396

31.5432, 0.4007,
0.3435

44.1636, 0.3466,
0.3357

26.5964, 0.4358,
0.3471

51.9173, 0.3265,
0.3319

22.5003, 0.4760,
0.3498

60.6829, 0.3100,
0.3284

19.2067, 0.5194,
0.3510

70.4949, 0.2965,
0.3252

16.6622, 0.5621,
0.3499

81.3865, 0.2854,
0.3223

■ 14.8072, 0.5986,
0.3462

■ 91.2913, 0.2816,
0.3289

■ 13.5698, 0.6241,
0.3405

■ 13.4044, 0.6278,
0.3397

Harmonies

Analogous

The Analogous color harmony consists of three colors that are next to each other on the color wheel.



37.3834, 0.3525, 0.3141



37.3834, 0.3711, 0.3396



37.3834, 0.3730, 0.3639

Triad

The Triadic color harmony groups three colors that are evenly spaced from another and form a triangle on the color wheel.



37.3834, 0.3711, 0.3396



37.3834, 0.3002, 0.3696



37.3834, 0.2680, 0.2791

Complementary

The Complementary color scheme is a pair of colors which are on the opposite of each other on the color wheel.



37.3834, 0.3711, 0.3396



48.8340, 0.2710, 0.3181

Split Complementary

Split-complementary colors differ from the complementary color scheme. The scheme consists of three colors, the original color and two neighbors of the complement color.



37.3834, 0.2557, 0.2907



37.3834, 0.3711, 0.3396



37.3834, 0.2736, 0.3432

Square

The Square scheme is like the rectangle color scheme, but the four colors are evenly spaced on the color wheel.



37.3834, 0.3711, 0.3396



37.3834, 0.3311, 0.3834



37.3834, 0.2576, 0.3138



37.3834, 0.2923, 0.2802

Rectangle

The Rectangle color scheme consists of four colors that form a rectangle on the color wheel.



37.3834, 0.3711, 0.3396



37.3834, 0.3647, 0.3763



37.3834, 0.2576, 0.3138



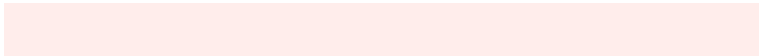
37.3834, 0.2624, 0.2815

Sweetspot

The Sweet Spot groups the original color and five complimentary colors.



37.3851, 0.3711, 0.3396



88.0795, 0.3263, 0.3319



36.7107, 0.3231, 0.2680



18.4000, 0.3291, 0.3324



0.0000, 0.0000, 0.0000



21.4041, 0.3127, 0.3290

Same Dimension

The Same Dimension uses a secret algorithm to generate beautiful new colors.



37.3851, 0.3711, 0.3396



56.9525, 0.3890, 0.3421



47.6727, 0.3615, 0.3747



11.4645, 0.3287, 0.3323



8.7075, 0.6261, 0.3410



0.5339, 0.5946, 0.3661

Inverse Universe

The Inverse Universe completely reimagines the original color for something new.



48.8340, 0.2710, 0.3181



79.5455, 0.2626, 0.3153



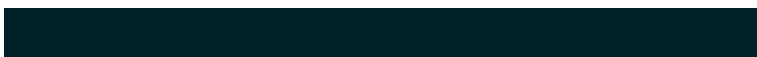
37.5102, 0.2669, 0.2786



12.4469, 0.2983, 0.3256



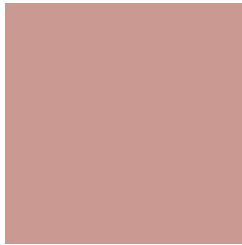
22.2040, 0.2123, 0.2841



1.2214, 0.2149, 0.2937

Previews

White Background



This preview shows how the Yxy color 37.3834, 0.3711, 0.3396 looks on a white background.

Color Contrast Check

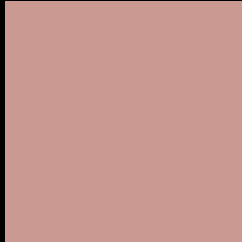
Large Text (above 18pt) WCAG AA × Fail

Any Text WCAG AA × Fail

Large Text (above 18pt) WCAG AAA × Fail

Any Text WCAG AAA × Fail

Black Background



This preview shows how the Yxy color 37.3834, 0.3711, 0.3396 looks on a black background.

Color Contrast Check

Large Text (above 18pt) WCAG AA ✓ Pass

Any Text WCAG AA ✓ Pass

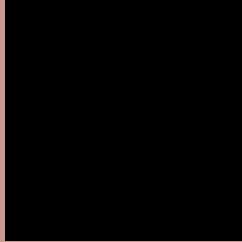
Large Text (above 18pt) WCAG AAA ✓ Pass

Any Text WCAG AAA ✓ Pass

If you want to check with other color combinations, try the [Color Contrast Checker](#).

Yxy 37.3834, 0.3711, 0.3396

Background



This preview shows how black text looks on a background with the Yxy color 37.3834, 0.3711, 0.3396.



This preview shows how white text looks on a background with the Yxy color 37.3834, 0.3711, 0.3396.

Color Blindness Simulation

Color vision deficiency is a very complex topic, and I could not describe the different causes any better than Wikipedia does, so if you want to learn more, you should check out their [article about color blindness](#).

Dichromacy



Original Color

37.3834, 0.3711, 0.3396

Protanopia

37.4432, 0.3310, 0.3476

Deuteranopia

37.5013, 0.3558, 0.3495



Tritanopia

37.2587, 0.3565, 0.3138

Trichromacy



Original Color

37.3834, 0.3711, 0.3396

Protanomaly

37.2566, 0.3446, 0.3443

Deuteranomaly

37.4650, 0.3615, 0.3466

Tritanomaly

37.2300, 0.3614, 0.3227

Monochromacy



Original Color

37.3834, 0.3711, 0.3396

Achromatopsia

38.6429, 0.3127, 0.3290

Achromatomaly

38.0472, 0.3328, 0.3332

CSS Examples

Text

The CSS property to change the color of the text to Yxy 37.3834, 0.3711, 0.3396 is called "color". The color property can be set on classes, ids or directly on the HTML element.

This example shows how text in the color `rgb(202, 153, 145)` looks like.

```
.text, #text, p{  
    color:rgb(202, 153, 145)  
}
```

If you want to add a text shadow in that color use the text-shadow property, you can generate a text shadow directly with our [CSS Text Shadow Generator](#).

Here you see how black text with a 4 pixel rgb(202, 153, 145) colored shadow looks like.

```
.shadow{ text-shadow: 4px 4px 2px rgb(202, 153, 145) }
```

Border

The CSS property to change the border of an element to Yxy 37.3834, 0.3711, 0.3396 is called "border". The border property can be set on classes, ids or directly on the HTML element.

This example shows the color as border, it can be applied via the CSS property "border" or "border-color".

```
.border, #border, table{ border:4px solid rgb(202, 153, 145) }
```

If only the border color should be changed use the property border-color.

```
.border{ border-color:rgb(202, 153, 145) }
```

If you want to add a box shadow in that color use:

Here you see how a box with a 4 pixel rgb(202, 153, 145) colored shadow looks like.

```
.boxshadow{ -moz-box-shadow:4px 4px 4px  
4px rgb(202, 153, 145); -webkit-box-  
shadow:4px 4px 4px 4px rgb(202, 153, 145);  
box-shadow:4px 4px 4px 4px rgb(202, 153,  
145) }
```


Background

The CSS property to change the background color of an element to Yxy 37.3834, 0.3711, 0.3396 is called "background". The background property can be set on classes, ids or directly on the HTML element.

```
.background, #background, body{  
background: rgb(202, 153, 145) }
```

If only the background color should be changed can be used:

```
.background{ background-color: rgb(202,  
153, 145) }
```

This example shows the color as background, it is applied via the CSS property "background".

To optimize and compress your CSS code, you can use our [online CSS compressor and optimizer](#) based on csstidy. If you want to create a linear or radial gradient as background or border, check our [CSS Gradient Generator](#).

Hey! You found this booklet interesting? Support Converting Colors with the new Membership Option!

The pro membership hides all ads, plus gives you double the colors in the color bucket, and more awesome pro features!

[Learn more, Memberships starting at \\$2.50/m!](#)

**Follow me
on Twitter!**

@ConvertingColor