

# Converting Colors

$Yxy(37.4738, 0.3909, 0.3835)$

Have a look what the booklet for  
Yxy(37.4738, 0.3909, 0.3835)  
contains.

<b>Yxy(37.4738, 0.3909, 0.3835)</b> .....	3
<b>Conversions</b> .....	4
<b>Details</b> .....	6
<b>Harmonies</b> .....	12
<b>Previews</b> .....	24
<b>Color Blindness Simulation</b> .....	27
<b>CSS Examples</b> .....	30

# Color

**Yxy(37.4738, 0.3909, 0.3835)**

# Conversions

## Conversions Part 1

<b>Format</b>	<b>Color</b>
Hex	C49E75
RGB	196, 158, 117
RGB Percent	77%, 62%, 46%
CMY	0.2315, 0.3803, 0.5412
CMYK	0.00, 0.19, 0.40, 0.23
HSL	31°, 40%, 61%
HSV	31°, 40%, 77%
XYZ	38.1969, 37.4738, 22.0446
YIQ	164.6880, 35.8090, -4.6950

# Conversions

## Conversions Part 2

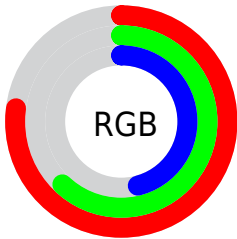
<b>Format</b>	<b>Color</b>
<b>RYB</b>	190, 196, 117
Decimal	12885621
CIELab	67.63, 8.50, 26.75
CIELCh	68, 28.070, 72.376
Yxy	37.4738, 0.3909, 0.3835
Android (android.graphics.Color)	4291075701 (0xFFC49E75)
YUV	164.6880, -23.5102, 27.4606
Hunter-Lab	61.2158, 4.2510, 21.5001

# Details

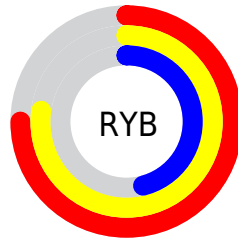
The Yxy color **37.4738, 0.3909, 0.3835** is a light color, and the websafe version is hex **CC9966**. A complement of this color would be **31.1889, 0.2481, 0.2668**, and the grayscale version is **37.5708, 0.3127, 0.3290**.

A 20% lighter version of the original color is **71.5239, 0.3762, 0.3747**, and **16.5955, 0.4151, 0.3985** is the 20% darker color. If you saturate the color by 10%, you get **33.9708, 0.4157, 0.3965**, and if you desaturate by 10%, it is **41.3231, 0.3681, 0.3697**.

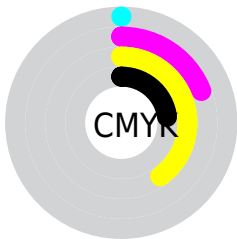
# Distribution



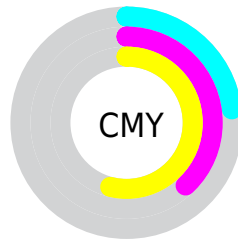
- Red (77%)
- Green (62%)
- Blue (46%)



- Red (75%)
- Yellow (77%)
- Blue (46%)



- Cyan (0%)
- Magenta (19%)
- Yellow (40%)
- Black (23%)




- Cyan (23%)
- Magenta (38%)
- Yellow (54%)


# Brightness & Saturation Gradients

These gradients show how the Yxy color 37.4738, 0.3909, 0.3835 changes by changing the brightness by 10 percent. The first figure shows a shift by +10% for each color and the second figure -10%.


Similar to the brightness gradients but the following saturation gradients show a change of the Yxy color 37.4738, 0.3909, 0.3835 by changing the saturation by 10% instead.




 37.4738, 0.3909,  
0.3835

 37.4738, 0.3909,  
0.3835


335.3573, 0.3505,  
0.3564

 25.5745, 0.4012,  
0.3900


 71.3009, 0.3760,  
0.3738

 16.5056, 0.4146,  
0.3980


 93.9975, 0.3704,  
0.3701

 9.8827, 0.4323,  
0.4082


 121.0621, 0.3658,  
0.3670

 5.3212, 0.4566,  
0.4208

152.8789, 0.3618,  
0.3643

 2.4369, 0.5052,  
0.4480

189.8325, 0.3584,  
0.3619

 0.8448, 0.5474,  
0.4526

232.3071, 0.3554,

 0.0000, 0.0000,

0.3599

0.0000

280.6873, 0.3528,  
0.3581

■ 37.4738, 0.3909,  
0.3835

■ 37.4738, 0.3909,  
0.3835

■ 33.9708, 0.4157,  
0.3965

■ 41.3231, 0.3681,  
0.3697

■ 30.7972, 0.4420,  
0.4077

■ 45.5242, 0.3475,  
0.3557

■ 27.9423, 0.4685,  
0.4159


■ 50.0891, 0.3292,  
0.3422


■ 25.3926, 0.4940,  
0.4199


■ 55.0277, 0.3132,  
0.3294

■ 23.1327, 0.5167,  
0.4186

■ 60.3493, 0.2991,  
0.3174

 21.1957, 0.5356,  
0.4129

 66.0628, 0.2868,  
0.3063

 72.1769, 0.2761,  
0.2961

 77.4317, 0.2765,  
0.3056

 82.9177, 0.2773,  
0.3159

# Harmonies

## Analogous

The Analogous color harmony consists of three colors that are next to each other on the color wheel.



37.4738, 0.3961, 0.3523



37.4738, 0.3909, 0.3835



37.4738, 0.3641, 0.4029

# Triad

The Triadic color harmony groups three colors that are evenly spaced from another and form a triangle on the color wheel.



37.4738, 0.3909, 0.3835



37.4738, 0.2515, 0.3355



37.4738, 0.2965, 0.2676

# Complementary

The Complementary color scheme is a pair of colors which are on the opposite of each other on the color wheel.



37.4738, 0.3909, 0.3835



31.1889, 0.2481, 0.2668

# Split Complementary

Split-complementary colors differ from the complementary color scheme. The scheme consists of three colors, the original color and two neighbors of the complement color.



37.4738, 0.2605, 0.2608



37.4738, 0.3909, 0.3835



37.4738, 0.2360, 0.2966

# Square

The Square scheme is like the rectangle color scheme, but the four colors are evenly spaced on the color wheel.



37.4738, 0.3909, 0.3835



37.4738, 0.2834, 0.3757



37.4738, 0.2392, 0.2703



37.4738, 0.3394, 0.2881



# Rectangle

The Rectangle color scheme consists of four colors that form a rectangle on the color wheel.



37.4738, 0.3909, 0.3835



37.4738, 0.3384, 0.4046



37.4738, 0.2392, 0.2703



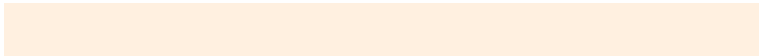
37.4738, 0.2832, 0.2636

# Sweetspot

The Sweet Spot groups the original color and five complimentary colors.



37.4756, 0.3909, 0.3835



89.1578, 0.3325, 0.3447



26.8234, 0.3640, 0.2786



18.8439, 0.3348, 0.3465



0.0000, 0.0000, 0.0000



21.4041, 0.3127, 0.3290



# Same Dimension

The Same Dimension uses a secret algorithm to generate beautiful new colors.



37.4756, 0.3909, 0.3835



62.5041, 0.4118, 0.3946



52.3086, 0.3712, 0.4281



10.9240, 0.3276, 0.3410



13.7964, 0.5335, 0.4146



0.7336, 0.5014, 0.4401



# Inverse Universe

The Inverse Universe completely reimagines the original color for something new.



31.1889, 0.2481, 0.2668



49.6185, 0.2346, 0.2509



20.5762, 0.2399, 0.2071



10.5287, 0.2984, 0.3167



7.8966, 0.1759, 0.1531

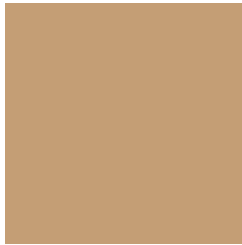


0.4792, 0.1875, 0.1949



# Previews

## White Background



This preview shows how the Yxy color 37.4738, 0.3909, 0.3835 looks on a white background.

## Color Contrast Check

Large Text (above 18pt) WCAG AA × Fail

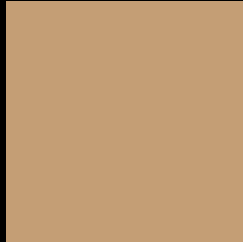
Any Text WCAG AA × Fail

Large Text (above 18pt) WCAG AAA × Fail

Any Text WCAG AAA × Fail



# Black Background



This preview shows how the Yxy color 37.4738, 0.3909, 0.3835 looks on a black background.

## Color Contrast Check

Large Text (above 18pt) WCAG AA ✓ Pass

Any Text WCAG AA ✓ Pass

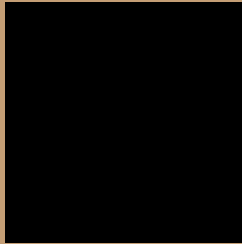
Large Text (above 18pt) WCAG AAA ✓ Pass

Any Text WCAG AAA ✓ Pass

If you want to check with other color combinations, try the [Color Contrast Checker](#).

**Yxy 37.4738, 0.3909, 0.3835**

## Background



This preview shows how black text looks on a background with the Yxy color 37.4738, 0.3909, 0.3835.



This preview shows how white text looks on a background with the Yxy color 37.4738, 0.3909, 0.3835.

# Color Blindness Simulation

Color vision deficiency is a very complex topic, and I could not describe the different causes any better than Wikipedia does, so if you want to learn more, you should check out their [article about color blindness](#).

## Dichromacy



### Original Color

37.4738, 0.3909, 0.3835

### Protanopia

37.6134, 0.3652, 0.3927

### Deuteranopia

37.4738, 0.3909, 0.3835



## Tritanopia

37.5543, 0.3509, 0.3137

# Trichromacy



## Original Color

37.4738, 0.3909, 0.3835

## Protanomaly

37.3629, 0.3746, 0.3886

## Deuteranomaly

37.4738, 0.3909, 0.3835

## Tritanomaly

37.3599, 0.3656, 0.3383

# Monochromacy



## Original Color

37.4738, 0.3909, 0.3835

## Achromatopsia

37.6262, 0.3127, 0.3290

## Achromatomaly

37.2089, 0.3391, 0.3488

# CSS Examples

## Text

The CSS property to change the color of the text to Yxy 37.4738, 0.3909, 0.3835 is called "color". The color property can be set on classes, ids or directly on the HTML element.

This example shows how text in the color `rgb(196, 158, 117)` looks like.

```
.text, #text, p{  
    color:rgb(196, 158, 117)  
}
```

If you want to add a text shadow in that color use the text-shadow property, you can generate a text shadow directly with our [CSS Text Shadow Generator](#).

Here you see how black text with a 4 pixel rgb(196, 158, 117) colored shadow looks like.

```
.shadow{ text-shadow: 4px 4px 2px rgb(196, 158, 117) }
```

## Border

The CSS property to change the border of an element to Yxy 37.4738, 0.3909, 0.3835 is called "border". The border property can be set on classes, ids or directly on the HTML element.

This example shows the color as border, it can be applied via the CSS property "border" or "border-color".

```
.border, #border, table{ border:4px solid rgb(196, 158, 117) }
```

If only the border color should be changed use the property `border-color`.

```
.border{ border-color:rgb(196, 158, 117) }
```

If you want to add a box shadow in that color use:

Here you see how a box with a 4 pixel `rgb(196, 158, 117)` colored shadow looks like.

```
.boxshadow{ -moz-box-shadow:4px 4px 4px  
4px rgb(196, 158, 117); -webkit-box-  
shadow:4px 4px 4px 4px rgb(196, 158, 117);  
box-shadow:4px 4px 4px 4px rgb(196, 158,  
117) }
```



# Background

The CSS property to change the background color of an element to Yxy 37.4738, 0.3909, 0.3835 is called "background". The background property can be set on classes, ids or directly on the HTML element.

```
.background, #background, body{  
background: rgb(196, 158, 117) }
```

If only the background color should be changed can be used:

```
.background{ background-color: rgb(196,  
158, 117) }
```

This example shows the color as background, it is applied via the CSS property "background".

To optimize and compress your CSS code, you can use our [online CSS compressor and optimizer](#) based on csstidy. If you want to create a linear or radial gradient as background or border, check our [CSS Gradient Generator](#).

Hey! You found this booklet interesting? Support Converting Colors with the new Membership Option!

The pro membership hides all ads, plus gives you double the colors in the color bucket, and more awesome pro features!

**[Learn more, Memberships starting at \\$2.50/m!](#)**

**Follow me  
on Twitter!**

@ConvertingColor