

Converting Colors

Yxy(37.4920, 0.3412, 0.3263)

Have a look what the booklet for
Yxy(37.4920, 0.3412, 0.3263)
contains.

Yxy(37.3434, 0.3407, 0.3250)	3
Conversions	4
Details	6
Harmonies	12
Previews	24
Color Blindness Simulation	27
CSS Examples	30

Color

Yxy(37.3434, 0.3407, 0.3250)

Conversions

Conversions Part 1

Format	Color
Hex	BC9DA0
RGB	188, 157, 160
RGB Percent	74%, 62%, 63%
CMY	0.2626, 0.3843, 0.3725
CMYK	0.00, 0.17, 0.15, 0.26
HSL	354°, 19%, 68%
HSV	354°, 17%, 74%
XYZ	39.1474, 37.3434, 38.4120
YIQ	166.6110, 17.5130, 7.5050

Conversions

Conversions Part 2

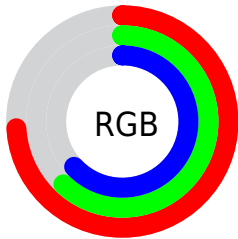
Format	Color
RYB	188, 157, 160
Decimal	12361120
CIELab	67.53, 11.95, 2.71
CIElCh	68, 12.256, 12.753
Yxy	37.3434, 0.3407, 0.3250
Android (android.graphics.Color)	4290551200 (0xFFBC9DA0)
YUV	166.6110, -3.2592, 18.7582
Hunter-Lab	61.1092, 7.4082, 5.5080

Details

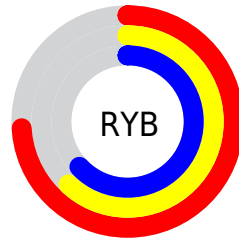
The Yxy color **37.3434, 0.3407, 0.3250** is a light color, and the websafe version is hex **CC9999**. A complement of this color would be **46.6478, 0.2902, 0.3331**, and the grayscale version is **38.4568, 0.3127, 0.3290**.

A 20% lighter version of the original color is **71.2264, 0.3346, 0.3259**, and **16.4805, 0.3484, 0.3235** is the 20% darker color. If you saturate the color by 10%, you get **30.9111, 0.3632, 0.3224**, and if you desaturate by 10%, it is **44.8391, 0.3226, 0.3275**.

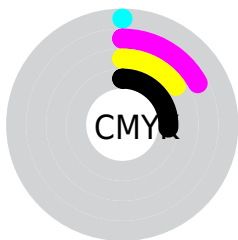
Distribution



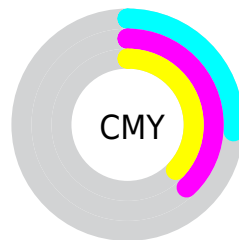
- Red (74%)
- Green (62%)
- Blue (63%)



- Red (74%)
- Yellow (62%)
- Blue (63%)



- Cyan (0%)
- Magenta (17%)
- Yellow (15%)
- Black (26%)





- Cyan (26%)
- Magenta (38%)
- Yellow (37%)

Brightness & Saturation Gradients


These gradients show how the Yxy color 37.3434, 0.3407, 0.3250 changes by changing the brightness by 10 percent. The first figure shows a shift by +10% for each color and the second figure -10%.


Similar to the brightness gradients but the following saturation gradients show a change of the Yxy color 37.3434, 0.3407, 0.3250 by changing the saturation by 10% instead.


 37.3434, 0.3407,
0.3250


 37.3434, 0.3407,
0.3250


334.7949, 0.3261,
0.3272

 25.4735, 0.3445,
0.3244


 71.1006, 0.3353,
0.3258

 16.4302, 0.3496,
0.3236


 93.7567, 0.3333,
0.3261

 9.8291, 0.3566,
0.3224


120.7770, 0.3316,
0.3264

 5.2858, 0.3667,
0.3206

152.5458, 0.3302,
0.3266

 2.4159, 0.3830,
0.3175

189.4477, 0.3289,
0.3268

 0.8340, 0.4165,
0.3134

231.8668, 0.3279,

 0.0000, 1.0000,

0.3269

0.0000

280.1878, 0.3270,
0.3271

0.0000, 0.0000,
0.0000

37.3434, 0.3407,
0.3250

37.3434, 0.3407,
0.3250

30.9111, 0.3632,
0.3224

44.8391, 0.3226,
0.3275

25.4894, 0.3910,
0.3198

53.4382, 0.3080,
0.3298

21.0284, 0.4247,
0.3175

63.1844, 0.2962,
0.3319

17.4719, 0.4642,
0.3157

74.1179, 0.2867,
0.3338

14.7580, 0.5081,
0.3151

86.2768, 0.2789,
0.3355

■ 12.8170, 0.5528,
0.3160

■ 89.4347, 0.2742,
0.3289

■ 11.5680, 0.5925,
0.3187

■ 10.9045, 0.6214,
0.3229

■ 10.7396, 0.6290,
0.3239

Harmonies

Analogous

The Analogous color harmony consists of three colors that are next to each other on the color wheel.



37.3434, 0.3250, 0.3106



37.3434, 0.3407, 0.3250



37.3434, 0.3488, 0.3408

Triad

The Triadic color harmony groups three colors that are evenly spaced from another and form a triangle on the color wheel.



37.3434, 0.3407, 0.3250



37.3434, 0.3184, 0.3593



37.3434, 0.2795, 0.3032

Complementary

The Complementary color scheme is a pair of colors which are on the opposite of each other on the color wheel.



37.3434, 0.3407, 0.3250



46.6478, 0.2902, 0.3331

Split Complementary

Split-complementary colors differ from the complementary color scheme. The scheme consists of three colors, the original color and two neighbors of the complement color.



37.3434, 0.2779, 0.3155



37.3434, 0.3407, 0.3250



37.3434, 0.3000, 0.3485

Square

The Square scheme is like the rectangle color scheme, but the four colors are evenly spaced on the color wheel.



37.3434, 0.3407, 0.3250



37.3434, 0.3356, 0.3612



37.3434, 0.2853, 0.3322



37.3434, 0.2897, 0.2981

Rectangle

The Rectangle color scheme consists of four colors that form a rectangle on the color wheel.



37.3434, 0.3407, 0.3250



37.3434, 0.3487, 0.3502



37.3434, 0.2853, 0.3322



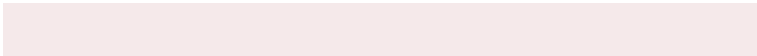
37.3434, 0.2780, 0.3066

Sweetspot

The Sweet Spot groups the original color and five complimentary colors.



37.3451, 0.3407, 0.3250



83.3320, 0.3203, 0.3278



38.0482, 0.3117, 0.2884



17.6968, 0.3214, 0.3277



95.5105, 0.3127, 0.3290



19.5994, 0.3127, 0.3290

Same Dimension

The Same Dimension uses a secret algorithm to generate beautiful new colors.



37.3451, 0.3407, 0.3250



62.9834, 0.3487, 0.3240



41.6562, 0.3410, 0.3456



9.5511, 0.3273, 0.3268



7.3150, 0.6272, 0.3229



0.2917, 0.5851, 0.2997

Inverse Universe

The Inverse Universe completely reimagines the original color for something new.



37.3451, 0.3407, 0.3250



62.9834, 0.3487, 0.3240



41.6985, 0.2874, 0.3118



9.5511, 0.3273, 0.3268



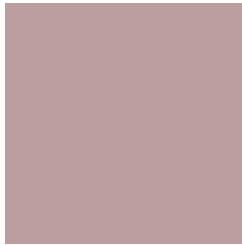
7.3150, 0.6272, 0.3229



0.2917, 0.5851, 0.2997

Previews

White Background



This preview shows how the Yxy color 37.3434, 0.3407, 0.3250 looks on a white background.

Color Contrast Check

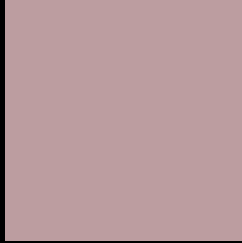
Large Text (above 18pt) WCAG AA × Fail

Any Text WCAG AA × Fail

Large Text (above 18pt) WCAG AAA × Fail

Any Text WCAG AAA × Fail

Black Background



This preview shows how the Yxy color 37.3434, 0.3407, 0.3250 looks on a black background.

Color Contrast Check

Large Text (above 18pt) WCAG AA ✓ Pass

Any Text WCAG AA ✓ Pass

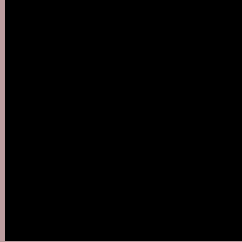
Large Text (above 18pt) WCAG AAA ✓ Pass

Any Text WCAG AAA ✓ Pass

If you want to check with other color combinations, try the [Color Contrast Checker](#).

Yxy 37.3434, 0.3407, 0.3250

Background



This preview shows how black text looks on a background with the Yxy color 37.3434, 0.3407, 0.3250.



This preview shows how white text looks on a background with the Yxy color 37.3434, 0.3407, 0.3250.

Color Blindness Simulation

Color vision deficiency is a very complex topic, and I could not describe the different causes any better than Wikipedia does, so if you want to learn more, you should check out their [article about color blindness](#).

Dichromacy



Original Color

37.3434, 0.3407, 0.3250

Protanopia

37.5561, 0.3165, 0.3290

Deuteranopia

37.2794, 0.3343, 0.3277



Tritanopia

37.4229, 0.3342, 0.3131

Trichromacy



Original Color

37.3434, 0.3407, 0.3250

Protanomaly

37.2480, 0.3244, 0.3262

Deuteranomaly

37.1821, 0.3365, 0.3263

Tritanomaly

37.3124, 0.3370, 0.3170

Monochromacy



Original Color

37.3434, 0.3407, 0.3250

Achromatopsia

38.6429, 0.3127, 0.3290

Achromatomaly

37.9887, 0.3232, 0.3276

CSS Examples

Text

The CSS property to change the color of the text to Yxy 37.3434, 0.3407, 0.3250 is called "color". The color property can be set on classes, ids or directly on the HTML element.

This example shows how text in the color `rgb(188, 157, 160)` looks like.

```
.text, #text, p{  
    color:rgb(188, 157, 160)  
}
```

If you want to add a text shadow in that color use the text-shadow property, you can generate a text shadow directly with our [CSS Text Shadow Generator](#).

Here you see how black text with a 4 pixel rgb(188, 157, 160) colored shadow looks like.

```
.shadow{ text-shadow: 4px 4px 2px rgb(188, 157, 160) }
```

Border

The CSS property to change the border of an element to Yxy 37.3434, 0.3407, 0.3250 is called "border". The border property can be set on classes, ids or directly on the HTML element.

This example shows the color as border, it can be applied via the CSS property "border" or "border-color".

```
.border, #border, table{ border:4px solid rgb(188, 157, 160) }
```

If only the border color should be changed use the property border-color.

```
.border{ border-color:rgb(188, 157, 160) }
```

If you want to add a box shadow in that color use:

Here you see how a box with a 4 pixel rgb(188, 157, 160) colored shadow looks like.

```
.boxshadow{ -moz-box-shadow:4px 4px 4px  
4px rgb(188, 157, 160); -webkit-box-  
shadow:4px 4px 4px 4px rgb(188, 157, 160);  
box-shadow:4px 4px 4px 4px rgb(188, 157,  
160) }
```


Background

The CSS property to change the background color of an element to Yxy 37.3434, 0.3407, 0.3250 is called "background". The background property can be set on classes, ids or directly on the HTML element.

```
.background, #background, body{  
background: rgb(188, 157, 160) }
```

If only the background color should be changed can be used:

```
.background{ background-color: rgb(188,  
157, 160) }
```

This example shows the color as background, it is applied via the CSS property "background".

To optimize and compress your CSS code, you can use our [online CSS compressor and optimizer](#) based on csstidy. If you want to create a linear or radial gradient as background or border, check our [CSS Gradient Generator](#).

Hey! You found this booklet interesting? Support Converting Colors with the new Membership Option!

The pro membership hides all ads, plus gives you double the colors in the color bucket, and more awesome pro features!

[Learn more, Memberships starting at \\$2.50/m!](#)

**Follow me
on Twitter!**

@ConvertingColor