

Converting Colors

Yxy(37.4923, 0.3095, 0.3159)

Have a look what the booklet for
Yxy(37.4923, 0.3095, 0.3159)
contains.

Yxy(37.4978, 0.3096, 0.3164)	3
Conversions	4
Details	6
Harmonies	12
Previews	24
Color Blindness Simulation	27
CSS Examples	30

Color

Yxy(37.4978, 0.3096, 0.3164)

Conversions

Conversions Part 1

Format	Color
Hex	A8A3AC
RGB	168, 163, 172
RGB Percent	66%, 64%, 67%
CMY	0.3411, 0.3608, 0.3256
CMYK	0.02, 0.05, 0.00, 0.33
HSL	273°, 5%, 66%
HSV	273°, 5%, 67%
XYZ	36.6919, 37.4978, 44.3242
YIQ	165.5210, 0.0910, 3.8590

Conversions

Conversions Part 2

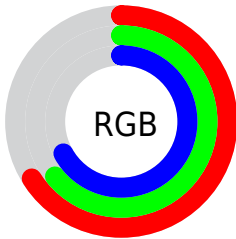
Format	Color
RYB	168, 163, 172
Decimal	11051948
CIELab	67.65, 3.51, -4.00
CIElCh	68, 5.325, 311.250
Yxy	37.4978, 0.3096, 0.3164
Android (android.graphics.Color)	4289242028 (0xFFA8A3AC)
YUV	165.5210, 3.1941, 2.1741
Hunter-Lab	61.2354, -0.2059, -0.0512

Details

The Yxy color **37.4978, 0.3096, 0.3164** is a light color, and the websafe version is hex **999999**. A complement of this color would be **40.3557, 0.3157, 0.3416**, and the grayscale version is **37.8754, 0.3127, 0.3290**.

A 20% lighter version of the original color is **71.3768, 0.3103, 0.3193**, and **16.4379, 0.3083, 0.3113** is the 20% darker color. If you saturate the color by 10%, you get **30.9905, 0.3028, 0.2908**, and if you desaturate by 10%, it is **44.8877, 0.3153, 0.3400**.

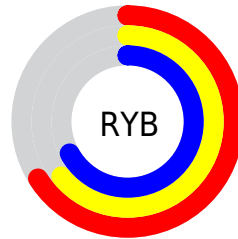
Distribution



Red (66%)

Green (64%)

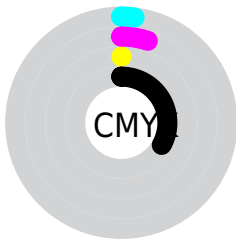
Blue (67%)



Red (66%)

Yellow (64%)

Blue (67%)

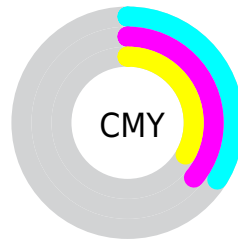


Cyan (2%)

Magenta (5%)

Yellow (0%)

Black (33%)



Cyan (34%)

Magenta (36%)

Yellow (33%)

Brightness & Saturation Gradients

These gradients show how the Yxy color 37.4978, 0.3096, 0.3164 changes by changing the brightness by 10 percent. The first figure shows a shift by +10% for each color and the second figure -10%.

Similar to the brightness gradients but the following saturation gradients show a change of the Yxy color 37.4978, 0.3096, 0.3164 by changing the saturation by 10% instead.

■ 37.4978, 0.3096,
0.3164

■ 37.4978, 0.3096,
0.3164

■ 335.4607, 0.3112,
0.3229

■ 25.5932, 0.3092,
0.3147

■ 71.3377, 0.3102,
0.3188

■ 16.5195, 0.3086,
0.3125

■ 94.0418, 0.3104,
0.3197

■ 9.8925, 0.3078,
0.3095

■ 121.1145, 0.3106,
0.3204

■ 5.3278, 0.3066,
0.3052

■ 152.9402, 0.3108,
0.3211

■ 2.4408, 0.3047,
0.2984

■ 189.9032, 0.3109,
0.3216

■ 0.8468, 0.3012,
0.2861

■ 232.3881, 0.3110,

■ 0.0000, 0.0000,

0.3221

0.0000

280.7791, 0.3111,
0.3225

■ 37.4978, 0.3096,
0.3164

■ 37.4978, 0.3096,
0.3164

■ 30.9905, 0.3028,
0.2908

■ 44.8877, 0.3153,
0.3400

■ 25.3269, 0.2950,
0.2636

■ 53.1877, 0.3201,
0.3616

■ 20.4723, 0.2860,
0.2353

■ 62.4299, 0.3241,
0.3812

■ 16.3875, 0.2759,
0.2067

■ 72.6435, 0.3274,
0.3987

■ 13.0301, 0.2649,
0.1789

■ 83.8562, 0.3301,
0.4144

10.3534, 0.2534,
0.1532

88.7442, 0.3341,
0.4186

8.3051, 0.2416,
0.1309

89.9138, 0.3392,
0.4171

6.8250, 0.2301,
0.1132

91.1375, 0.3443,
0.4157

5.8384, 0.2194,
0.1006

92.4161, 0.3494,
0.4142

Harmonies

Analogous

The Analogous color harmony consists of three colors that are next to each other on the color wheel.



37.4978, 0.3024, 0.3154



37.4978, 0.3096, 0.3164



37.4978, 0.3177, 0.3206

Triad

The Triadic color harmony groups three colors that are evenly spaced from another and form a triangle on the color wheel.



37.4978, 0.3096, 0.3164



37.4978, 0.3276, 0.3398



37.4978, 0.3010, 0.3309

Complementary

The Complementary color scheme is a pair of colors which are on the opposite of each other on the color wheel.



37.4978, 0.3096, 0.3164



40.3557, 0.3157, 0.3416

Split Complementary

Split-complementary colors differ from the complementary color scheme. The scheme consists of three colors, the original color and two neighbors of the complement color.



37.4978, 0.3076, 0.3376



37.4978, 0.3096, 0.3164



37.4978, 0.3230, 0.3428

Square

The Square scheme is like the rectangle color scheme, but the four colors are evenly spaced on the color wheel.



37.4978, 0.3096, 0.3164



37.4978, 0.3282, 0.3340



37.4978, 0.3157, 0.3420



37.4978, 0.2975, 0.3237

Rectangle

The Rectangle color scheme consists of four colors that form a rectangle on the color wheel.



37.4978, 0.3096, 0.3164



37.4978, 0.3225, 0.3247



37.4978, 0.3157, 0.3420



37.4978, 0.3029, 0.3333

Sweetspot

The Sweet Spot groups the original color and five complimentary colors.



37.4994, 0.3096, 0.3164



72.1388, 0.3115, 0.3242



38.4184, 0.3049, 0.3220



15.7096, 0.3116, 0.3244



86.8899, 0.3127, 0.3290



16.2647, 0.3127, 0.3290

Same Dimension

The Same Dimension uses a secret algorithm to generate beautiful new colors.



37.4994, 0.3096, 0.3164



66.9340, 0.3090, 0.3142



37.9250, 0.3137, 0.3172



8.3989, 0.3088, 0.3132



4.0958, 0.2155, 0.0961



0.1457, 0.2473, 0.1136

Inverse Universe

The Inverse Universe completely reimagines the original color for something new.



37.7535, 0.3177, 0.3235



67.4722, 0.3186, 0.3225



39.9458, 0.3117, 0.3411



8.4714, 0.3190, 0.3221



6.9269, 0.5165, 0.2619



0.2038, 0.4428, 0.2213

Previews

White Background



This preview shows how the Yxy color 37.4978, 0.3096, 0.3164 looks on a white background.

Color Contrast Check

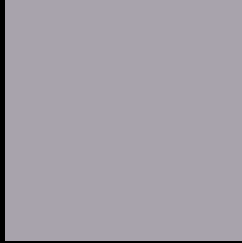
Large Text (above 18pt) WCAG AA × Fail

Any Text WCAG AA × Fail

Large Text (above 18pt) WCAG AAA × Fail

Any Text WCAG AAA × Fail

Black Background



This preview shows how the Yxy color 37.4978, 0.3096, 0.3164 looks on a black background.

Color Contrast Check

Large Text (above 18pt) WCAG AA ✓ Pass

Any Text WCAG AA ✓ Pass

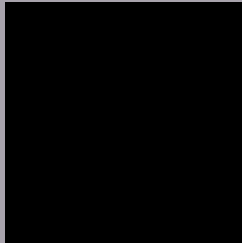
Large Text (above 18pt) WCAG AAA ✓ Pass

Any Text WCAG AAA ✓ Pass

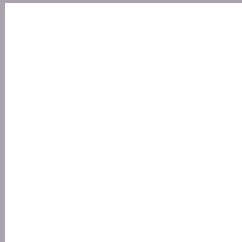
If you want to check with other color combinations, try the [Color Contrast Checker](#).

Yxy 37.4978, 0.3096, 0.3164

Background



This preview shows how black text looks on a background with the Yxy color 37.4978, 0.3096, 0.3164.

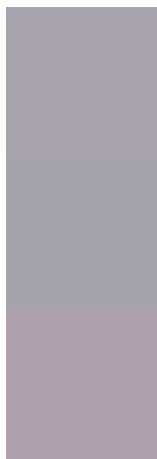


This preview shows how white text looks on a background with the Yxy color 37.4978, 0.3096, 0.3164.

Color Blindness Simulation

Color vision deficiency is a very complex topic, and I could not describe the different causes any better than Wikipedia does, so if you want to learn more, you should check out their [article about color blindness](#).

Dichromacy



Original Color

37.4978, 0.3096, 0.3164

Protanopia

37.5288, 0.3068, 0.3177

Deuteranopia

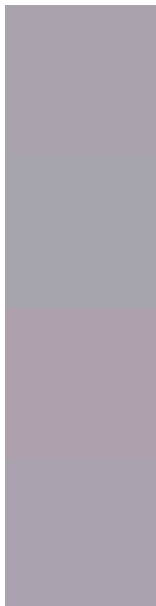
37.5059, 0.3174, 0.3112



Tritanopia

37.3708, 0.3080, 0.3109

Trichromacy



Original Color

37.4978, 0.3096, 0.3164

Protanomaly

37.6365, 0.3077, 0.3177

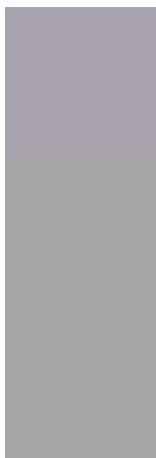
Deuteranomaly

37.5055, 0.3144, 0.3125

Tritanomaly

37.3317, 0.3088, 0.3122

Monochromacy



Original Color

37.4978, 0.3096, 0.3164

Achromatopsia

38.1326, 0.3127, 0.3290

Achromatomaly

37.9529, 0.3120, 0.3248

CSS Examples

Text

The CSS property to change the color of the text to Yxy 37.4978, 0.3096, 0.3164 is called "color". The color property can be set on classes, ids or directly on the HTML element.

This example shows how text in the color `rgb(168, 163, 172)` looks like.

```
.text, #text, p{  
    color:rgb(168, 163, 172)  
}
```

If you want to add a text shadow in that color use the text-shadow property, you can generate a text shadow directly with our [CSS Text Shadow Generator](#).

Here you see how black text with a 4 pixel rgb(168, 163, 172) colored shadow looks like.

```
.shadow{ text-shadow: 4px 4px 2px rgb(168, 163, 172) }
```

Border

The CSS property to change the border of an element to Yxy 37.4978, 0.3096, 0.3164 is called "border". The border property can be set on classes, ids or directly on the HTML element.

This example shows the color as border, it can be applied via the CSS property "border" or "border-color".

```
.border, #border, table{ border:4px solid rgb(168, 163, 172) }
```

If only the border color should be changed use the property `border-color`.

```
.border{ border-color:rgb(168, 163, 172) }
```

If you want to add a box shadow in that color use:

Here you see how a box with a 4 pixel `rgb(168, 163, 172)` colored shadow looks like.

```
.boxshadow{ -moz-box-shadow:4px 4px 4px  
4px rgb(168, 163, 172); -webkit-box-  
shadow:4px 4px 4px 4px rgb(168, 163, 172);  
box-shadow:4px 4px 4px 4px rgb(168, 163,  
172) }
```


Background

The CSS property to change the background color of an element to Yxy 37.4978, 0.3096, 0.3164 is called "background". The background property can be set on classes, ids or directly on the HTML element.

```
.background, #background, body{  
background: rgb(168, 163, 172) }
```

If only the background color should be changed can be used:

```
.background{ background-color: rgb(168,  
163, 172) }
```

This example shows the color as background, it is applied via the CSS property "background".

To optimize and compress your CSS code, you can use our [online CSS compressor and optimizer](#) based on csstidy. If you want to create a linear or radial gradient as background or border, check our [CSS Gradient Generator](#).

Hey! You found this booklet interesting? Support Converting Colors with the new Membership Option!

The pro membership hides all ads, plus gives you double the colors in the color bucket, and more awesome pro features!

[Learn more, Memberships starting at \\$2.50/m!](#)

**Follow me
on Twitter!**

@ConvertingColor