

Converting Colors

$Yxy(37.6024, 0.3684, 0.3292)$

Have a look what the booklet for
Yxy(37.6024, 0.3684, 0.3292)
contains.

Yxy(37.7026, 0.3673, 0.3292)	3
<i>Conversions</i>	4
<i>Details</i>	6
<i>Harmonies</i>	12
<i>Previews</i>	24
<i>Color Blindness Simulation</i>	27
<i>CSS Examples</i>	30

Color

Yxy(37.7026, 0.3673, 0.3292)

Conversions

Conversions Part 1

Format	Color
Hex	CD9898
RGB	205, 152, 152
RGB Percent	80%, 60%, 60%
CMY	0.1962, 0.4038, 0.4040
CMYK	0.00, 0.26, 0.26, 0.20
HSL	0°, 35%, 70%
HSV	0°, 26%, 80%
XYZ	42.0661, 37.7026, 34.7592
YIQ	167.8470, 31.5880, 11.2360

Conversions

Conversions Part 2

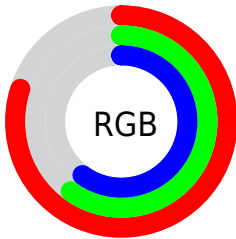
Format	Color
R _Y B	205, 152, 152
Decimal	13473944
CIE Lab	67.80, 19.83, 7.80
CIE LCh	68, 21.305, 21.463
Yxy	37.7026, 0.3673, 0.3292
Android (android.graphics.Color)	4291664024 (0xFFCD9898)
YUV	167.8470, -7.8126, 32.5832
Hunter-Lab	61.4024, 14.8340, 9.4183

Details

The Yxy color **37.7026, 0.3673, 0.3292** is a light color, and the websafe version is hex **CC9999**. A complement of this color would be **54.7149, 0.2751, 0.3288**, and the grayscale version is **39.1063, 0.3127, 0.3290**.

A 20% lighter version of the original color is **70.3419, 0.3506, 0.3301**, and **16.7310, 0.3853, 0.3292** is the 20% darker color. If you saturate the color by 10%, you get **31.0037, 0.3982, 0.3293**, and if you desaturate by 10%, it is **45.6694, 0.3424, 0.3291**.

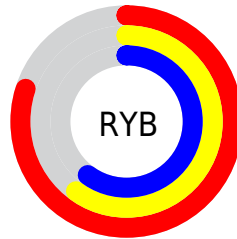
Distribution



Red (80%)

Green (60%)

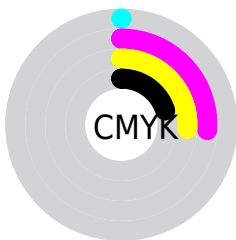
Blue (60%)



Red (80%)

Yellow (60%)

Blue (60%)

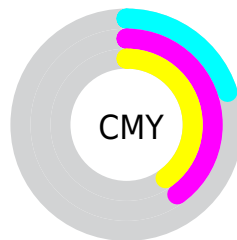


Cyan (0%)

Magenta (26%)

Yellow (26%)

Black (20%)



Cyan (20%)


Magenta (40%)

Yellow (40%)

Brightness & Saturation Gradients


These gradients show how the Yxy color 37.7026, 0.3673, 0.3292 changes by changing the brightness by 10 percent. The first figure shows a shift by +10% for each color and the second figure -10%.


Similar to the brightness gradients but the following saturation gradients show a change of the Yxy color 37.7026, 0.3673, 0.3292 by changing the saturation by 10% instead.


 37.7026, 0.3673,
0.3292


 37.7026, 0.3673,
0.3292

336.3425, 0.3388,
0.3296

 25.7519, 0.3748,
0.3289


 71.6521, 0.3567,
0.3295

 16.6382, 0.3847,
0.3285


 94.4197, 0.3527,
0.3295

 9.9768, 0.3983,
0.3276


121.5617, 0.3495,
0.3296

 5.3836, 0.4181,
0.3260

153.4626, 0.3467,
0.3296

 2.4741, 0.4494,
0.3224

190.5068, 0.3443,
0.3296

 0.8636, 0.5256,
0.3254

233.0785, 0.3422,

 0.0000, 1.0000,

0.3296

0.0000

281.5623, 0.3404,
0.3296

0.0000, 0.0000,
0.0000

37.7026, 0.3673,
0.3292

37.7026, 0.3673,
0.3292

31.0037, 0.3982,
0.3293

45.6694, 0.3424,
0.3291

25.5025, 0.4357,
0.3294

54.9593, 0.3225,
0.3290

21.1299, 0.4795,
0.3296

65.6303, 0.3065,
0.3290

17.8079, 0.5271,
0.3297

77.7356, 0.2938,
0.3289

15.4481, 0.5735,
0.3299

91.3257, 0.2835,
0.3289

■ 13.9483, 0.6111,
0.3299

■ 91.7154, 0.2832,
0.3289

■ 13.1813, 0.6336,
0.3300

■ 12.9782, 0.6400,
0.3300

Harmonies

Analogous

The Analogous color harmony consists of three colors that are next to each other on the color wheel.



37.7026, 0.3426, 0.3041



37.7026, 0.3673, 0.3292



37.7026, 0.3765, 0.3555

Triad

The Triadic color harmony groups three colors that are evenly spaced from another and form a triangle on the color wheel.



37.7026, 0.3673, 0.3292



37.7026, 0.3124, 0.3787



37.7026, 0.2598, 0.2806

Complementary

The Complementary color scheme is a pair of colors which are on the opposite of each other on the color wheel.



37.7026, 0.3673, 0.3292



54.7149, 0.2751, 0.3288

Split Complementary

Split-complementary colors differ from the complementary color scheme. The scheme consists of three colors, the original color and two neighbors of the complement color.



37.7026, 0.2528, 0.2976



37.7026, 0.3673, 0.3292



37.7026, 0.2822, 0.3555

Square

The Square scheme is like the rectangle color scheme, but the four colors are evenly spaced on the color wheel.



37.7026, 0.3673, 0.3292



37.7026, 0.3438, 0.3862



37.7026, 0.2608, 0.3250



37.7026, 0.2803, 0.2766

Rectangle

The Rectangle color scheme consists of four colors that form a rectangle on the color wheel.



37.7026, 0.3673, 0.3292



37.7026, 0.3725, 0.3706



37.7026, 0.2608, 0.3250



37.7026, 0.2558, 0.2849

Sweetspot

The Sweet Spot groups the original color and five complimentary colors.



37.7044, 0.3673, 0.3292



86.4302, 0.3266, 0.3291



39.8337, 0.3157, 0.2652



17.9889, 0.3295, 0.3291



0.0000, 0.0000, 0.0000



21.4041, 0.3127, 0.3290

Same Dimension

The Same Dimension uses a secret algorithm to generate beautiful new colors.



37.7044, 0.3673, 0.3292



55.4429, 0.3836, 0.3293



47.2739, 0.3591, 0.3623



11.2148, 0.3290, 0.3291



8.0822, 0.6400, 0.3300



0.4174, 0.6398, 0.3302

Inverse Universe

The Inverse Universe completely reimagines the original color for something new.



54.7149, 0.2751, 0.3288



87.9330, 0.2681, 0.3288



43.1125, 0.2719, 0.2932



12.7258, 0.2984, 0.3289



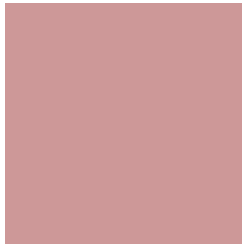
29.8883, 0.2246, 0.3286



1.5423, 0.2246, 0.3286

Previews

White Background



This preview shows how the Yxy color 37.7026, 0.3673, 0.3292 looks on a white background.

Color Contrast Check

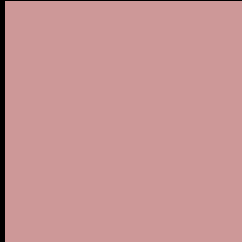
Large Text (above 18pt) WCAG AA × Fail

Any Text WCAG AA × Fail

Large Text (above 18pt) WCAG AAA × Fail

Any Text WCAG AAA × Fail

Black Background



This preview shows how the Yxy color 37.7026, 0.3673, 0.3292 looks on a black background.

Color Contrast Check

Large Text (above 18pt) WCAG AA ✓ Pass

Any Text WCAG AA ✓ Pass

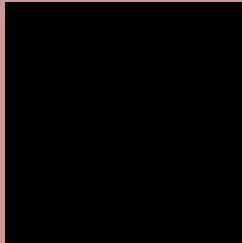
Large Text (above 18pt) WCAG AAA ✓ Pass

Any Text WCAG AAA ✓ Pass

If you want to check with other color combinations, try the [Color Contrast Checker](#).

Yxy 37.7026, 0.3673, 0.3292

Background



This preview shows how black text looks on a background with the Yxy color 37.7026, 0.3673, 0.3292.



This preview shows how white text looks on a background with the Yxy color 37.7026, 0.3673, 0.3292.

Color Blindness Simulation

Color vision deficiency is a very complex topic, and I could not describe the different causes any better than Wikipedia does, so if you want to learn more, you should check out their [article about color blindness](#).

Dichromacy



Original Color

37.7026, 0.3673, 0.3292

Protanopia

37.9595, 0.3227, 0.3375

Deuteranopia

37.9408, 0.3477, 0.3413



Tritanopia

37.5431, 0.3586, 0.3139

Trichromacy



Original Color

37.7026, 0.3673, 0.3292

Protanomaly

37.6092, 0.3389, 0.3346

Deuteranomaly

37.8176, 0.3556, 0.3371

Tritanomaly

37.7237, 0.3624, 0.3202

Monochromacy



Original Color

37.7026, 0.3673, 0.3292

Achromatopsia

39.1572, 0.3127, 0.3290

Achromatomaly

38.2731, 0.3310, 0.3291

CSS Examples

Text

The CSS property to change the color of the text to Yxy 37.7026, 0.3673, 0.3292 is called "color". The color property can be set on classes, ids or directly on the HTML element.

This example shows how text in the color `rgb(205, 152, 152)` looks like.

```
.text, #text, p{  
    color:rgb(205, 152, 152)  
}
```

If you want to add a text shadow in that color use the text-shadow property, you can generate a text shadow directly with our [CSS Text Shadow Generator](#).

Here you see how black text with a 4 pixel rgb(205, 152, 152) colored shadow looks like.

```
.shadow{ text-shadow: 4px 4px 2px rgb(205, 152, 152) }
```

Border

The CSS property to change the border of an element to Yxy 37.7026, 0.3673, 0.3292 is called "border". The border property can be set on classes, ids or directly on the HTML element.

This example shows the color as border, it can be applied via the CSS property "border" or "border-color".

```
.border, #border, table{ border:4px solid rgb(205, 152, 152) }
```

If only the border color should be changed use the property border-color.

```
.border{ border-color:rgb(205, 152, 152) }
```

If you want to add a box shadow in that color use:

Here you see how a box with a 4 pixel rgb(205, 152, 152) colored shadow looks like.

```
.boxshadow{ -moz-box-shadow:4px 4px 4px  
4px rgb(205, 152, 152); -webkit-box-  
shadow:4px 4px 4px 4px rgb(205, 152, 152);  
box-shadow:4px 4px 4px 4px rgb(205, 152,  
152) }
```


Background

The CSS property to change the background color of an element to Yxy 37.7026, 0.3673, 0.3292 is called "background". The background property can be set on classes, ids or directly on the HTML element.

```
.background, #background, body{  
background: rgb(205, 152, 152) }
```

If only the background color should be changed can be used:

```
.background{ background-color: rgb(205,  
152, 152) }
```

This example shows the color as background, it is applied via the CSS property "background".

To optimize and compress your CSS code, you can use our [online CSS compressor and optimizer](#) based on csstidy. If you want to create a linear or radial gradient as background or border, check our [CSS Gradient Generator](#).

Hey! You found this booklet interesting? Support Converting Colors with the new Membership Option!

The pro membership hides all ads, plus gives you double the colors in the color bucket, and more awesome pro features!

[Learn more, Memberships starting at \\$2.50/m!](#)

**Follow me
on Twitter!**

@ConvertingColor