

Converting Colors

$Y_{xy}(37.6599, 0.3754, 0.3426)$

Have a look what the booklet for
Yxy(37.6599, 0.3754, 0.3426)
contains.

Yxy(37.6030, 0.3753, 0.3421)	3
Conversions	4
Details	6
Harmonies	12
Previews	24
Color Blindness Simulation	27
CSS Examples	30

Color

Yxy(37.6030, 0.3753, 0.3421)

Conversions

Conversions Part 1

Format	Color
Hex	CC998F
RGB	204, 153, 143
RGB Percent	80%, 60%, 56%
CMY	0.2000, 0.4000, 0.4393
CMYK	0.00, 0.25, 0.30, 0.20
HSL	10°, 37%, 68%
HSV	10°, 30%, 80%
XYZ	41.2523, 37.6030, 31.0629
YIQ	167.1090, 33.6060, 7.7020

Conversions

Conversions Part 2

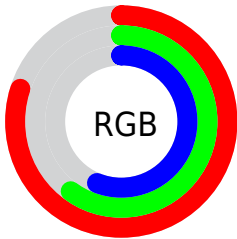
Format	Color
R _Y B	204, 155, 143
Decimal	13408655
CIE Lab	67.73, 17.67, 12.70
CIE LCh	68, 21.760, 35.694
Yxy	37.6030, 0.3753, 0.3421
Android (android.graphics.Color)	4291598735 (0xFFCC998F)
YUV	167.1090, -11.8857, 32.3534
Hunter-Lab	61.3213, 12.7689, 12.8910

Details

The Yxy color **37.6030, 0.3753, 0.3421** is a light color, and the websafe version is hex **CC9999**. A complement of this color would be **48.7785, 0.2684, 0.3154**, and the grayscale version is **38.7469, 0.3127, 0.3290**.

A 20% lighter version of the original color is **70.4030, 0.3572, 0.3404**, and **16.6826, 0.3953, 0.3449** is the 20% darker color. If you saturate the color by 10%, you get **31.8529, 0.4054, 0.3466**, and if you desaturate by 10%, it is **44.2667, 0.3502, 0.3375**.

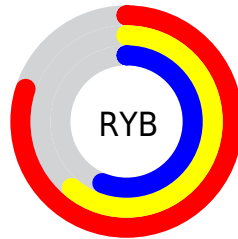
Distribution



Red (80%)

Green (60%)

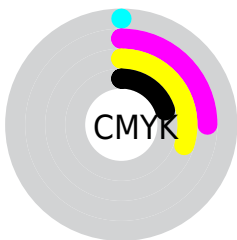
Blue (56%)



Red (80%)

Yellow (61%)

Blue (56%)

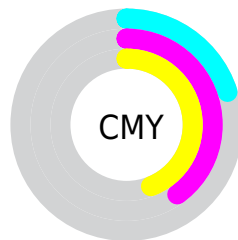


Cyan (0%)

Magenta (25%)

Yellow (30%)

Black (20%)



Cyan (20%)


Magenta (40%)


Yellow (44%)

Brightness & Saturation Gradients

These gradients show how the Yxy color 37.6030, 0.3753, 0.3421 changes by changing the brightness by 10 percent. The first figure shows a shift by +10% for each color and the second figure -10%.


Similar to the brightness gradients but the following saturation gradients show a change of the Yxy color 37.6030, 0.3753, 0.3421 by changing the saturation by 10% instead.


 37.6030, 0.3753,
0.3421


 37.6030, 0.3753,
0.3421


335.9139, 0.3426,
0.3361

 25.6747, 0.3839,
0.3434


 71.4992, 0.3631,
0.3401

 16.5804, 0.3953,
0.3449


 94.2360, 0.3586,
0.3392

 9.9358, 0.4108,
0.3466


121.3443, 0.3548,
0.3385

 5.3564, 0.4334,
0.3484

153.2086, 0.3516,
0.3379

 2.4579, 0.4687,
0.3495

190.2134, 0.3489,
0.3374

 0.8554, 0.5934,
0.3868

232.7429, 0.3465,

 0.0000, 1.0000,

0.3369

0.0000

281.1816, 0.3444,
0.3365

0.0000, 0.0000,
0.0000

37.6030, 0.3753,
0.3421

37.6030, 0.3753,
0.3421

31.8529, 0.4054,
0.3466

44.2667, 0.3502,
0.3375

26.9714, 0.4408,
0.3507

51.8761, 0.3296,
0.3331

22.9175, 0.4809,
0.3537

60.4682, 0.3126,
0.3290

19.6448, 0.5236,
0.3548

70.0762, 0.2986,
0.3252

17.1022, 0.5651,
0.3533

80.7320, 0.2871,
0.3217

■ 15.2324, 0.5999,
0.3487

■ 91.5791, 0.2827,
0.3289

■ 13.9630, 0.6244,
0.3423

■ 13.9544, 0.6246,
0.3423

Harmonies

Analogous

The Analogous color harmony consists of three colors that are next to each other on the color wheel.



37.6030, 0.3568, 0.3152



37.6030, 0.3753, 0.3421



37.6030, 0.3758, 0.3674

Triad

The Triadic color harmony groups three colors that are evenly spaced from another and form a triangle on the color wheel.



37.6030, 0.3753, 0.3421



37.6030, 0.2970, 0.3703



37.6030, 0.2670, 0.2760

Complementary

The Complementary color scheme is a pair of colors which are on the opposite of each other on the color wheel.



37.6030, 0.3753, 0.3421



48.7785, 0.2684, 0.3154

Split Complementary

Split-complementary colors differ from the complementary color scheme. The scheme consists of three colors, the original color and two neighbors of the complement color.



37.6030, 0.2530, 0.2871



37.6030, 0.3753, 0.3421



37.6030, 0.2696, 0.3415

Square

The Square scheme is like the rectangle color scheme, but the four colors are evenly spaced on the color wheel.



37.6030, 0.3753, 0.3421



37.6030, 0.3297, 0.3862



37.6030, 0.2539, 0.3106



37.6030, 0.2934, 0.2782

Rectangle

The Rectangle color scheme consists of four colors that form a rectangle on the color wheel.



37.6030, 0.3753, 0.3421



37.6030, 0.3661, 0.3800



37.6030, 0.2539, 0.3106



37.6030, 0.2608, 0.2782

Sweetspot

The Sweet Spot groups the original color and five complimentary colors.



37.6048, 0.3753, 0.3421



86.9751, 0.3281, 0.3328



36.4123, 0.3248, 0.2654



18.1931, 0.3308, 0.3334



0.0000, 0.0000, 0.0000



21.4041, 0.3127, 0.3290

Same Dimension

The Same Dimension uses a secret algorithm to generate beautiful new colors.



37.6048, 0.3753, 0.3421



55.8604, 0.3944, 0.3451



48.5452, 0.3646, 0.3788



11.5063, 0.3286, 0.3329



8.8736, 0.6226, 0.3438



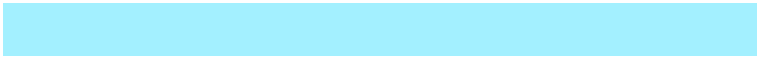
0.5532, 0.5882, 0.3711

Inverse Universe

The Inverse Universe completely reimagines the original color for something new.



48.7785, 0.2684, 0.3154



77.3058, 0.2596, 0.3120



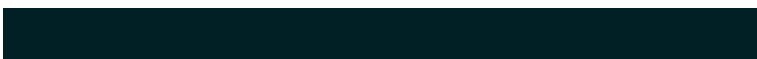
36.8720, 0.2638, 0.2735



12.4012, 0.2983, 0.3251



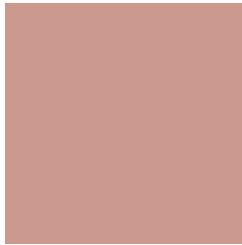
21.0757, 0.2101, 0.2763



1.1730, 0.2132, 0.2876

Previews

White Background



This preview shows how the Yxy color 37.6030, 0.3753, 0.3421 looks on a white background.

Color Contrast Check

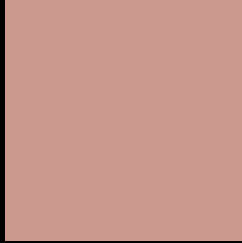
Large Text (above 18pt) WCAG AA × Fail

Any Text WCAG AA × Fail

Large Text (above 18pt) WCAG AAA × Fail

Any Text WCAG AAA × Fail

Black Background



This preview shows how the Yxy color 37.6030, 0.3753, 0.3421 looks on a black background.

Color Contrast Check

Large Text (above 18pt) WCAG AA ✓ Pass

Any Text WCAG AA ✓ Pass

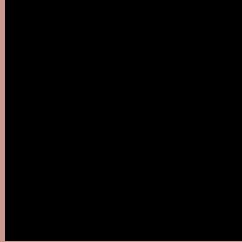
Large Text (above 18pt) WCAG AAA ✓ Pass

Any Text WCAG AAA ✓ Pass

If you want to check with other color combinations, try the [Color Contrast Checker](#).

Yxy 37.6030, 0.3753, 0.3421

Background



This preview shows how black text looks on a background with the Yxy color 37.6030, 0.3753, 0.3421.



This preview shows how white text looks on a background with the Yxy color 37.6030, 0.3753, 0.3421.

Color Blindness Simulation

Color vision deficiency is a very complex topic, and I could not describe the different causes any better than Wikipedia does, so if you want to learn more, you should check out their [article about color blindness](#).

Dichromacy



Original Color

37.6030, 0.3753, 0.3421

Protanopia

37.8508, 0.3336, 0.3518

Deuteranopia

37.6964, 0.3598, 0.3521



Tritanopia

37.5431, 0.3586, 0.3139

Trichromacy



Original Color

37.6030, 0.3753, 0.3421

Protanomaly

37.7867, 0.3483, 0.3484

Deuteranomaly

37.6690, 0.3656, 0.3491

Tritanomaly

37.4789, 0.3645, 0.3240

Monochromacy



Original Color

37.6030, 0.3753, 0.3421

Achromatopsia

38.6429, 0.3127, 0.3290

Achromatomaly

38.0126, 0.3337, 0.3346

CSS Examples

Text

The CSS property to change the color of the text to Yxy 37.6030, 0.3753, 0.3421 is called "color". The color property can be set on classes, ids or directly on the HTML element.

This example shows how text in the color `rgb(204, 153, 143)` looks like.

```
.text, #text, p{  
    color:rgb(204, 153, 143)  
}
```

If you want to add a text shadow in that color use the text-shadow property, you can generate a text shadow directly with our [CSS Text Shadow Generator](#).

Here you see how black text with a 4 pixel rgb(204, 153, 143) colored shadow looks like.

```
.shadow{ text-shadow: 4px 4px 2px rgb(204, 153, 143) }
```

Border

The CSS property to change the border of an element to Yxy 37.6030, 0.3753, 0.3421 is called "border". The border property can be set on classes, ids or directly on the HTML element.

This example shows the color as border, it can be applied via the CSS property "border" or "border-color".

```
.border, #border, table{ border:4px solid rgb(204, 153, 143) }
```

If only the border color should be changed use the property `border-color`.

```
.border{ border-color:rgb(204, 153, 143) }
```

If you want to add a box shadow in that color use:

Here you see how a box with a 4 pixel `rgb(204, 153, 143)` colored shadow looks like.

```
.boxshadow{ -moz-box-shadow:4px 4px 4px  
4px rgb(204, 153, 143); -webkit-box-  
shadow:4px 4px 4px 4px rgb(204, 153, 143);  
box-shadow:4px 4px 4px 4px rgb(204, 153,  
143) }
```


Background

The CSS property to change the background color of an element to Yxy 37.6030, 0.3753, 0.3421 is called "background". The background property can be set on classes, ids or directly on the HTML element.

```
.background, #background, body{  
background: rgb(204, 153, 143) }
```

If only the background color should be changed can be used:

```
.background{ background-color: rgb(204,  
153, 143) }
```

This example shows the color as background, it is applied via the CSS property "background".

To optimize and compress your CSS code, you can use our [online CSS compressor and optimizer](#) based on csstidy. If you want to create a linear or radial gradient as background or border, check our [CSS Gradient Generator](#).

Hey! You found this booklet interesting? Support Converting Colors with the new Membership Option!

The pro membership hides all ads, plus gives you double the colors in the color bucket, and more awesome pro features!

[Learn more, Memberships starting at \\$2.50/m!](#)

**Follow me
on Twitter!**

@ConvertingColor