

Converting Colors

$Yxy(37.6999, 0.3536, 0.3292)$

Have a look what the booklet for
Yxy(37.6999, 0.3536, 0.3292)
contains.

Yxy(37.5450, 0.3542, 0.3291)	3
Conversions	4
Details	6
Harmonies	12
Previews	24
Color Blindness Simulation	27
CSS Examples	30

Color

Yxy(37.5450, 0.3542, 0.3291)

Conversions

Conversions Part 1

Format	Color
Hex	C49B9B
RGB	196, 155, 155
RGB Percent	77%, 61%, 61%
CMY	0.2313, 0.3922, 0.3921
CMYK	0.00, 0.21, 0.21, 0.23
HSL	360°, 26%, 69%
HSV	360°, 21%, 77%
XYZ	40.4085, 37.5450, 36.1304
YIQ	167.2590, 24.4360, 8.6920

Conversions

Conversions Part 2

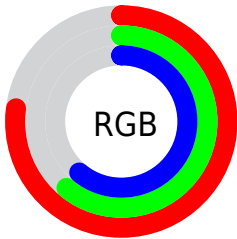
Format	Color
RYB	196, 155, 155
Decimal	12884891
CIELab	67.68, 15.26, 5.82
CIElCh	68, 16.331, 20.876
Yxy	37.5450, 0.3542, 0.3291
Android (android.graphics.Color)	4291074971 (0xFFC49B9B)
YUV	167.2590, -6.0437, 25.2059
Hunter-Lab	61.2740, 10.4864, 7.9313

Details

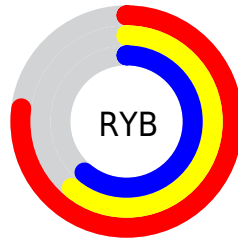
The Yxy color **37.5450, 0.3542, 0.3291** is a light color, and the websafe version is hex **CC9999**. A complement of this color would be **50.4467, 0.2819, 0.3289**, and the grayscale version is **38.7995, 0.3127, 0.3290**.

A 20% lighter version of the original color is **71.5793, 0.3462, 0.3301**, and **16.6509, 0.3678, 0.3292** is the 20% darker color. If you saturate the color by 10%, you get **30.9375, 0.3819, 0.3292**, and if you desaturate by 10%, it is **45.3220, 0.3320, 0.3290**.

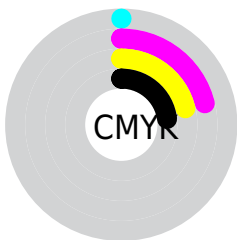
Distribution



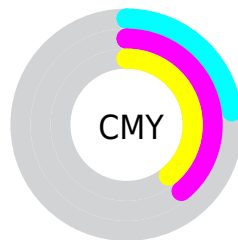
- Red (77%)
- Green (61%)
- Blue (61%)



- Red (77%)
- Yellow (61%)
- Blue (61%)



- Cyan (0%)
- Magenta (21%)
- Yellow (21%)
- Black (23%)





- Cyan (23%)
- Magenta (39%)
- Yellow (39%)

Brightness & Saturation Gradients


These gradients show how the Yxy color 37.5450, 0.3542, 0.3291 changes by changing the brightness by 10 percent. The first figure shows a shift by +10% for each color and the second figure -10%.


Similar to the brightness gradients but the following saturation gradients show a change of the Yxy color 37.5450, 0.3542, 0.3291 by changing the saturation by 10% instead.


 37.5450, 0.3542,
0.3291

 37.5450, 0.3542,
0.3291


335.6641, 0.3326,
0.3293

 25.6297, 0.3599,
0.3289


 71.4102, 0.3461,
0.3293

 16.5469, 0.3674,
0.3287


 94.1289, 0.3431,
0.3293

 9.9119, 0.3778,
0.3282


121.2176, 0.3407,
0.3293

 5.3406, 0.3929,
0.3272

153.0607, 0.3386,
0.3293

 2.4485, 0.4170,
0.3251

190.0424, 0.3367,
0.3293

 0.8507, 0.4728,
0.3273

232.5473, 0.3352,

 0.0000, 1.0000,

0.3293

0.0000

280.9597, 0.3338,
0.3293

0.0000, 0.0000,
0.0000

37.5450, 0.3542,
0.3291

37.5450, 0.3542,
0.3291

30.9375, 0.3819,
0.3292

45.3220, 0.3320,
0.3290

25.4380, 0.4160,
0.3293

54.3156, 0.3142,
0.3290

20.9876, 0.4566,
0.3294

64.5768, 0.3000,
0.3290

17.5195, 0.5026,
0.3295

76.1521, 0.2885,
0.3289

14.9594, 0.5503,
0.3297

89.0856, 0.2792,
0.3289

■ 13.2225, 0.5933,
0.3298

■ 90.4796, 0.2784,
0.3289

■ 12.2080, 0.6240,
0.3299

■ 11.7397, 0.6400,
0.3300

Harmonies

Analogous

The Analogous color harmony consists of three colors that are next to each other on the color wheel.



37.5450, 0.3353, 0.3094



37.5450, 0.3542, 0.3291



37.5450, 0.3615, 0.3496

Triad

The Triadic color harmony groups three colors that are evenly spaced from another and form a triangle on the color wheel.



37.5450, 0.3542, 0.3291



37.5450, 0.3133, 0.3669



37.5450, 0.2715, 0.2919

Complementary

The Complementary color scheme is a pair of colors which are on the opposite of each other on the color wheel.



37.5450, 0.3542, 0.3291



50.4467, 0.2819, 0.3289

Split Complementary

Split-complementary colors differ from the complementary color scheme. The scheme consists of three colors, the original color and two neighbors of the complement color.



37.5450, 0.2662, 0.3055



37.5450, 0.3542, 0.3291



37.5450, 0.2897, 0.3497

Square

The Square scheme is like the rectangle color scheme, but the four colors are evenly spaced on the color wheel.



37.5450, 0.3542, 0.3291



37.5450, 0.3373, 0.3726



37.5450, 0.2728, 0.3267



37.5450, 0.2874, 0.2882

Rectangle

The Rectangle color scheme consists of four colors that form a rectangle on the color wheel.



37.5450, 0.3542, 0.3291



37.5450, 0.3588, 0.3612



37.5450, 0.2728, 0.3267



37.5450, 0.2684, 0.2954

Sweetspot

The Sweet Spot groups the original color and five complimentary colors.



37.5467, 0.3542, 0.3291



89.6775, 0.3229, 0.3290



39.0752, 0.3145, 0.2775



18.9650, 0.3240, 0.3290



0.0000, 0.0000, 0.0000



21.4041, 0.3127, 0.3290

Same Dimension

The Same Dimension uses a secret algorithm to generate beautiful new colors.



37.5467, 0.3542, 0.3291



62.4044, 0.3658, 0.3291



44.6984, 0.3491, 0.3548



10.0780, 0.3289, 0.3290



7.5409, 0.6400, 0.3299



0.3258, 0.6399, 0.3299

Inverse Universe

The Inverse Universe completely reimagines the original color for something new.



37.5467, 0.3542, 0.3291



62.4044, 0.3658, 0.3291



42.0817, 0.2800, 0.3018



10.0780, 0.3289, 0.3290



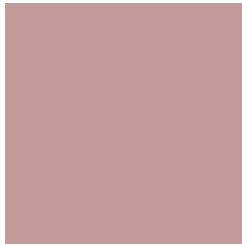
7.5409, 0.6400, 0.3299



0.3258, 0.6399, 0.3299

Previews

White Background



This preview shows how the Yxy color 37.5450, 0.3542, 0.3291 looks on a white background.

Color Contrast Check

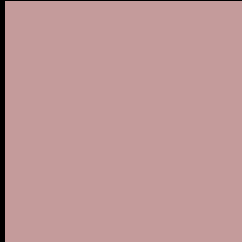
Large Text (above 18pt) WCAG AA × Fail

Any Text WCAG AA × Fail

Large Text (above 18pt) WCAG AAA × Fail

Any Text WCAG AAA × Fail

Black Background



This preview shows how the Yxy color 37.5450, 0.3542, 0.3291 looks on a black background.

Color Contrast Check

Large Text (above 18pt) WCAG AA ✓ Pass

Any Text WCAG AA ✓ Pass

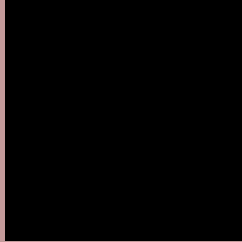
Large Text (above 18pt) WCAG AAA ✓ Pass

Any Text WCAG AAA ✓ Pass

If you want to check with other color combinations, try the [Color Contrast Checker](#).

Yxy 37.5450, 0.3542, 0.3291

Background



This preview shows how black text looks on a background with the Yxy color 37.5450, 0.3542, 0.3291.



This preview shows how white text looks on a background with the Yxy color 37.5450, 0.3542, 0.3291.

Color Blindness Simulation

Color vision deficiency is a very complex topic, and I could not describe the different causes any better than Wikipedia does, so if you want to learn more, you should check out their [article about color blindness](#).

Dichromacy



Original Color

37.5450, 0.3542, 0.3291

Protanopia

37.5240, 0.3210, 0.3347

Deuteranopia

37.4437, 0.3431, 0.3359



Tritanopia

37.3694, 0.3457, 0.3135

Trichromacy



Original Color

37.5450, 0.3542, 0.3291

Protanomaly

37.5421, 0.3329, 0.3332

Deuteranomaly

37.6056, 0.3473, 0.3345

Tritanomaly

37.5547, 0.3494, 0.3200

Monochromacy



Original Color

37.5450, 0.3542, 0.3291

Achromatopsia

38.6429, 0.3127, 0.3290

Achromatomaly

38.3037, 0.3270, 0.3290

CSS Examples

Text

The CSS property to change the color of the text to Yxy 37.5450, 0.3542, 0.3291 is called "color". The color property can be set on classes, ids or directly on the HTML element.

This example shows how text in the color `rgb(196, 155, 155)` looks like.

```
.text, #text, p{  
    color:rgb(196, 155, 155)  
}
```

If you want to add a text shadow in that color use the text-shadow property, you can generate a text shadow directly with our [CSS Text Shadow Generator](#).

Here you see how black text with a 4 pixel rgb(196, 155, 155) colored shadow looks like.

```
.shadow{ text-shadow: 4px 4px 2px rgb(196, 155, 155) }
```

Border

The CSS property to change the border of an element to Yxy 37.5450, 0.3542, 0.3291 is called "border". The border property can be set on classes, ids or directly on the HTML element.

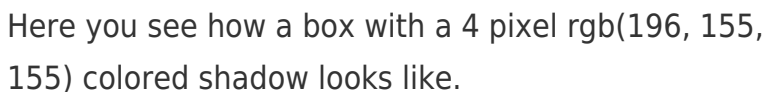
This example shows the color as border, it can be applied via the CSS property "border" or "border-color".

```
.border, #border, table{ border:4px solid rgb(196, 155, 155) }
```

If only the border color should be changed use the property `border-color`.

```
.border{ border-color:rgb(196, 155, 155) }
```

If you want to add a box shadow in that color use:



Here you see how a box with a 4 pixel `rgb(196, 155, 155)` colored shadow looks like.

```
.boxshadow{ -moz-box-shadow:4px 4px 4px 4px rgb(196, 155, 155); -webkit-box-shadow:4px 4px 4px 4px rgb(196, 155, 155); box-shadow:4px 4px 4px 4px rgb(196, 155, 155) }
```


Background

The CSS property to change the background color of an element to Yxy 37.5450, 0.3542, 0.3291 is called "background". The background property can be set on classes, ids or directly on the HTML element.

```
.background, #background, body{  
background: rgb(196, 155, 155) }
```

If only the background color should be changed can be used:

```
.background{ background-color: rgb(196,  
155, 155) }
```

This example shows the color as background, it is applied via the CSS property "background".

To optimize and compress your CSS code, you can use our [online CSS compressor and optimizer](#) based on csstidy. If you want to create a linear or radial gradient as background or border, check our [CSS Gradient Generator](#).

Hey! You found this booklet interesting? Support Converting Colors with the new Membership Option!

The pro membership hides all ads, plus gives you double the colors in the color bucket, and more awesome pro features!

[Learn more, Memberships starting at \\$2.50/m!](#)

**Follow me
on Twitter!**

@ConvertingColor