

Converting Colors

$Yxy(37.7513, 0.3517, 0.3272)$

Have a look what the booklet for
Yxy(37.7513, 0.3517, 0.3272)
contains.

Yxy(37.9470, 0.3519, 0.3278)	3
Conversions	4
Details	6
Harmonies	12
Previews	24
Color Blindness Simulation	27
CSS Examples	30

Color

Yxy(37.9470, 0.3519, 0.3278)

Conversions

Conversions Part 1

Format	Color
Hex	C49C9D
RGB	196, 156, 157
RGB Percent	77%, 61%, 62%
CMY	0.2314, 0.3882, 0.3843
CMYK	0.00, 0.20, 0.20, 0.23
HSL	359°, 25%, 69%
HSV	359°, 20%, 77%
XYZ	40.7369, 37.9470, 37.0788
YIQ	168.0740, 23.5190, 8.7910

Conversions

Conversions Part 2

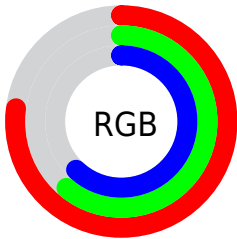
Format	Color
R _Y B	196, 156, 157
Decimal	12885149
CIE Lab	67.98, 14.99, 5.13
CIE LCh	68, 15.846, 18.895
Yxy	37.9470, 0.3519, 0.3278
Android (android.graphics.Color)	4291075229 (0xFFC49C9D)
YUV	168.0740, -5.4595, 24.4911
Hunter-Lab	61.6011, 10.2402, 7.4331

Details

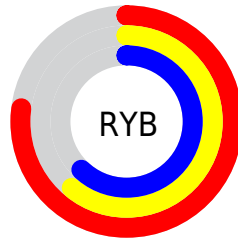
The Yxy color **37.9470, 0.3519, 0.3278** is a light color, and the websafe version is hex **CC9999**. A complement of this color would be **50.4820, 0.2832, 0.3302**, and the grayscale version is **39.2154, 0.3127, 0.3290**.

A 20% lighter version of the original color is **72.2246, 0.3438, 0.3281**, and **16.8945, 0.3644, 0.3274** is the 20% darker color. If you saturate the color by 10%, you get **31.2903, 0.3786, 0.3272**, and if you desaturate by 10%, it is **45.7705, 0.3305, 0.3284**.

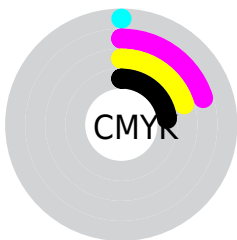
Distribution



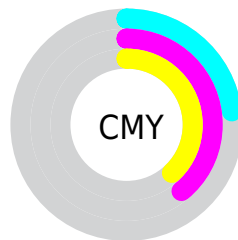
- Red (77%)
- Green (61%)
- Blue (62%)



- Red (77%)
- Yellow (61%)
- Blue (62%)



- Cyan (0%)
- Magenta (20%)
- Yellow (20%)
- Black (23%)




- Cyan (23%)
- Magenta (39%)
- Yellow (38%)

Brightness & Saturation Gradients


These gradients show how the Yxy color 37.9470, 0.3519, 0.3278 changes by changing the brightness by 10 percent. The first figure shows a shift by +10% for each color and the second figure -10%.


Similar to the brightness gradients but the following saturation gradients show a change of the Yxy color 37.9470, 0.3519, 0.3278 by changing the saturation by 10% instead.

 37.9470, 0.3519,
0.3278


 37.9470, 0.3519,
0.3278

337.3926, 0.3315,
0.3287

 25.9416, 0.3573,
0.3275


 72.0269, 0.3443,
0.3282

 16.7799, 0.3643,
0.3270


 94.8701, 0.3415,
0.3283

 10.0777, 0.3740,
0.3263


122.0948, 0.3392,
0.3284

 5.4505, 0.3882,
0.3250

154.0852, 0.3372,
0.3285

 2.5139, 0.4107,
0.3226

191.2258, 0.3355,
0.3285

 0.8836, 0.4589,
0.3216

233.9009, 0.3340,

 0.0000, 1.0000,

0.3286

0.0000

282.4951, 0.3327,
0.3286

0.0000, 0.0000,
0.0000

37.9470, 0.3519,
0.3278

37.9470, 0.3519,
0.3278

31.2903, 0.3786,
0.3272

45.7705, 0.3305,
0.3284

25.7397, 0.4114,
0.3266

54.8074, 0.3133,
0.3290

21.2368, 0.4507,
0.3262

65.1081, 0.2996,
0.3295

17.7158, 0.4955,
0.3260

76.7187, 0.2885,
0.3300

15.1036, 0.5427,
0.3262

89.6828, 0.2795,
0.3304

■ 13.3167, 0.5864,
0.3268

■ 90.4739, 0.2784,
0.3289

■ 12.2564, 0.6194,
0.3279

■ 11.7446, 0.6376,
0.3286

Harmonies

Analogous

The Analogous color harmony consists of three colors that are next to each other on the color wheel.



37.9470, 0.3331, 0.3089



37.9470, 0.3519, 0.3278



37.9470, 0.3598, 0.3477

Triad

The Triadic color harmony groups three colors that are evenly spaced from another and form a triangle on the color wheel.



37.9470, 0.3519, 0.3278



37.9470, 0.3149, 0.3663



37.9470, 0.2721, 0.2937

Complementary

The Complementary color scheme is a pair of colors which are on the opposite of each other on the color wheel.



37.9470, 0.3519, 0.3278



50.4820, 0.2832, 0.3302

Split Complementary

Split-complementary colors differ from the complementary color scheme. The scheme consists of three colors, the original color and two neighbors of the complement color.



37.9470, 0.2678, 0.3075



37.9470, 0.3519, 0.3278



37.9470, 0.2919, 0.3503

Square

The Square scheme is like the rectangle color scheme, but the four colors are evenly spaced on the color wheel.



37.9470, 0.3519, 0.3278



37.9470, 0.3379, 0.3711



37.9470, 0.2749, 0.3283



37.9470, 0.2870, 0.2895

Rectangle

The Rectangle color scheme consists of four colors that form a rectangle on the color wheel.



37.9470, 0.3519, 0.3278



37.9470, 0.3578, 0.3592



37.9470, 0.2749, 0.3283



37.9470, 0.2694, 0.2973

Sweetspot

The Sweet Spot groups the original color and five complimentary colors.



37.9487, 0.3519, 0.3278



89.6998, 0.3226, 0.3287



39.3211, 0.3138, 0.2787



18.9703, 0.3238, 0.3286



0.0000, 0.0000, 0.0000



21.4041, 0.3127, 0.3290

Same Dimension

The Same Dimension uses a secret algorithm to generate beautiful new colors.



37.9487, 0.3519, 0.3278



63.7096, 0.3618, 0.3276



44.6644, 0.3482, 0.3532



10.0819, 0.3285, 0.3285



7.5495, 0.6370, 0.3283



0.3276, 0.6255, 0.3220

Inverse Universe

The Inverse Universe completely reimagines the original color for something new.



37.9487, 0.3519, 0.3278



63.7096, 0.3618, 0.3276



42.6288, 0.2810, 0.3035



10.0819, 0.3285, 0.3285



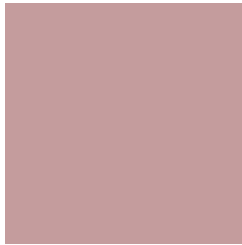
7.5495, 0.6370, 0.3283



0.3276, 0.6255, 0.3220

Previews

White Background



This preview shows how the Yxy color 37.9470, 0.3519, 0.3278 looks on a white background.

Color Contrast Check

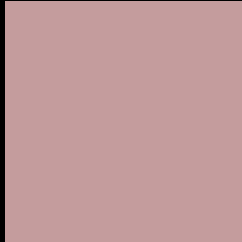
Large Text (above 18pt) WCAG AA × Fail

Any Text WCAG AA × Fail

Large Text (above 18pt) WCAG AAA × Fail

Any Text WCAG AAA × Fail

Black Background



This preview shows how the Yxy color 37.9470, 0.3519, 0.3278 looks on a black background.

Color Contrast Check

Large Text (above 18pt) WCAG AA ✓ Pass

Any Text WCAG AA ✓ Pass

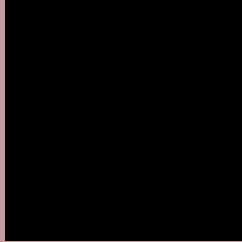
Large Text (above 18pt) WCAG AAA ✓ Pass

Any Text WCAG AAA ✓ Pass

If you want to check with other color combinations, try the [Color Contrast Checker](#).

Yxy 37.9470, 0.3519, 0.3278

Background



This preview shows how black text looks on a background with the Yxy color 37.9470, 0.3519, 0.3278.



This preview shows how white text looks on a background with the Yxy color 37.9470, 0.3519, 0.3278.

Color Blindness Simulation

Color vision deficiency is a very complex topic, and I could not describe the different causes any better than Wikipedia does, so if you want to learn more, you should check out their [article about color blindness](#).

Dichromacy



Original Color

37.9470, 0.3519, 0.3278

Protanopia

38.0649, 0.3200, 0.3333

Deuteranopia

37.9810, 0.3419, 0.3345



Tritanopia

38.0662, 0.3443, 0.3148

Trichromacy



Original Color

37.9470, 0.3519, 0.3278

Protanomaly

37.9624, 0.3309, 0.3318

Deuteranomaly

38.1437, 0.3461, 0.3331

Tritanomaly

37.9573, 0.3472, 0.3187

Monochromacy



Original Color

37.9470, 0.3519, 0.3278

Achromatopsia

39.1572, 0.3127, 0.3290

Achromatomaly

38.6962, 0.3260, 0.3290

CSS Examples

Text

The CSS property to change the color of the text to Yxy 37.9470, 0.3519, 0.3278 is called "color". The color property can be set on classes, ids or directly on the HTML element.

This example shows how text in the color `rgb(196, 156, 157)` looks like.

```
.text, #text, p{  
    color:rgb(196, 156, 157)  
}
```

If you want to add a text shadow in that color use the text-shadow property, you can generate a text shadow directly with our [CSS Text Shadow Generator](#).

Here you see how black text with a 4 pixel rgb(196, 156, 157) colored shadow looks like.

```
.shadow{ text-shadow: 4px 4px 2px rgb(196, 156, 157) }
```

Border

The CSS property to change the border of an element to Yxy 37.9470, 0.3519, 0.3278 is called "border". The border property can be set on classes, ids or directly on the HTML element.

This example shows the color as border, it can be applied via the CSS property "border" or "border-color".

```
.border, #border, table{ border:4px solid rgb(196, 156, 157) }
```

If only the border color should be changed use the property `border-color`.

```
.border{ border-color:rgb(196, 156, 157) }
```

If you want to add a box shadow in that color use:

Here you see how a box with a 4 pixel `rgb(196, 156, 157)` colored shadow looks like.

```
.boxshadow{ -moz-box-shadow:4px 4px 4px  
4px rgb(196, 156, 157); -webkit-box-  
shadow:4px 4px 4px 4px rgb(196, 156, 157);  
box-shadow:4px 4px 4px 4px rgb(196, 156,  
157) }
```


Background

The CSS property to change the background color of an element to Yxy 37.9470, 0.3519, 0.3278 is called "background". The background property can be set on classes, ids or directly on the HTML element.

```
.background, #background, body{  
background: rgb(196, 156, 157) }
```

If only the background color should be changed can be used:

```
.background{ background-color: rgb(196,  
156, 157) }
```

This example shows the color as background, it is applied via the CSS property "background".

To optimize and compress your CSS code, you can use our [online CSS compressor and optimizer](#) based on csstidy. If you want to create a linear or radial gradient as background or border, check our [CSS Gradient Generator](#).

Hey! You found this booklet interesting? Support Converting Colors with the new Membership Option!

The pro membership hides all ads, plus gives you double the colors in the color bucket, and more awesome pro features!

[Learn more, Memberships starting at \\$2.50/m!](#)

**Follow me
on Twitter!**

@ConvertingColor