

Converting Colors

$Yxy(37.9064, 0.3587, 0.3636)$

Have a look what the booklet for
Yxy(37.9064, 0.3587, 0.3636)
contains.

Yxy(37.9611, 0.3586, 0.3635)	3
<i>Conversions</i>	4
<i>Details</i>	6
<i>Harmonies</i>	12
<i>Previews</i>	24
<i>Color Blindness Simulation</i>	27
<i>CSS Examples</i>	30

Color

Yxy(37.9611, 0.3586, 0.3635)

Conversions

Conversions Part 1

Format	Color
Hex	B9A289
RGB	185, 162, 137
RGB Percent	73%, 64%, 54%
CMY	0.2744, 0.3647, 0.4627
CMYK	0.00, 0.12, 0.26, 0.27
HSL	31°, 26%, 63%
HSV	31°, 26%, 73%
XYZ	37.4494, 37.9611, 29.0217
YIQ	166.0270, 21.7330, -2.8990

Conversions

Conversions Part 2

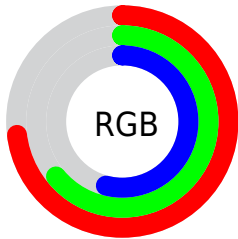
Format	Color
RYB	181, 185, 137
Decimal	12165769
CIELab	67.99, 4.52, 16.10
CIElCh	68, 16.725, 74.319
Yxy	37.9611, 0.3586, 0.3635
Android (android.graphics.Color)	4290355849 (0xFFB9A289)
YUV	166.0270, -14.3103, 16.6393
Hunter-Lab	61.6126, 0.6739, 15.2011

Details

The Yxy color **37.9611, 0.3586, 0.3635** is a light color, and the websafe version is hex **CC9999**. A complement of this color would be **33.9803, 0.2719, 0.2918**, and the grayscale version is **38.2121, 0.3127, 0.3290**.

A 20% lighter version of the original color is **72.2207, 0.3503, 0.3578**, and **16.6653, 0.3728, 0.3730** is the 20% darker color. If you saturate the color by 10%, you get **34.4589, 0.3803, 0.3774**, and if you desaturate by 10%, it is **41.7786, 0.3391, 0.3497**.

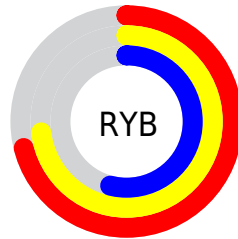
Distribution



Red (73%)

Green (64%)

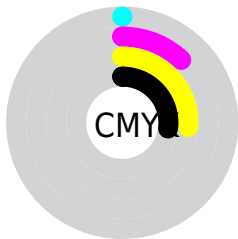
Blue (54%)



Red (71%)

Yellow (73%)

Blue (54%)

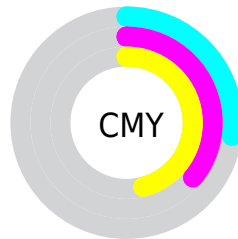


Cyan (0%)

Magenta (12%)

Yellow (26%)

Black (27%)



Cyan (27%)


Magenta (36%)


Yellow (46%)

Brightness & Saturation Gradients


These gradients show how the Yxy color 37.9611, 0.3586, 0.3635 changes by changing the brightness by 10 percent. The first figure shows a shift by +10% for each color and the second figure -10%.


Similar to the brightness gradients but the following saturation gradients show a change of the Yxy color 37.9611, 0.3586, 0.3635 by changing the saturation by 10% instead.


 37.9611, 0.3586,
0.3635


 37.9611, 0.3586,
0.3635


337.4531, 0.3348,
0.3460


 25.9525, 0.3648,
0.3679


 72.0485, 0.3498,
0.3571

 16.7881, 0.3729,
0.3737


 94.8961, 0.3465,
0.3547

 10.0835, 0.3839,
0.3813


 122.1255, 0.3438,
0.3527

 5.4544, 0.3997,
0.3918

154.1211, 0.3414,
0.3509

 2.5162, 0.4238,
0.4071

191.2672, 0.3394,
0.3494

 0.8848, 0.5194,
0.4806

233.9483, 0.3377,

 0.0000, 0.0000,

0.3481

0.0000

282.5488, 0.3362,
0.3470

■ 37.9611, 0.3586,
0.3635

■ 37.9611, 0.3586,
0.3635

■ 34.4589, 0.3803,
0.3774

■ 41.7786, 0.3391,
0.3497

■ 31.2577, 0.4042,
0.3909

■ 45.9149, 0.3220,
0.3365

■ 28.3494, 0.4298,
0.4030

■ 50.3800, 0.3068,
0.3241

■ 25.7237, 0.4562,
0.4127

■ 55.1820, 0.2936,
0.3125

■ 23.3692, 0.4823,
0.4188

■ 60.3284, 0.2821,
0.3018

■ 21.2734, 0.5063,
0.4200

■ 65.8266, 0.2720,
0.2920

■ 19.4217, 0.5269,
0.4160

■ 70.9189, 0.2692,
0.2948

■ 18.7331, 0.5348,
0.4136

■ 75.8192, 0.2702,
0.3048

■ 80.9723, 0.2712,
0.3147

Harmonies

Analogous

The Analogous color harmony consists of three colors that are next to each other on the color wheel.



37.9611, 0.3621, 0.3456



37.9611, 0.3586, 0.3635



37.9611, 0.3425, 0.3730

Triad

The Triadic color harmony groups three colors that are evenly spaced from another and form a triangle on the color wheel.



37.9611, 0.3586, 0.3635



37.9611, 0.2749, 0.3319



37.9611, 0.3051, 0.2918

Complementary

The Complementary color scheme is a pair of colors which are on the opposite of each other on the color wheel.



37.9611, 0.3586, 0.3635



33.9803, 0.2719, 0.2918

Split Complementary

Split-complementary colors differ from the complementary color scheme. The scheme consists of three colors, the original color and two neighbors of the complement color.



37.9611, 0.2826, 0.2873



37.9611, 0.3586, 0.3635



37.9611, 0.2657, 0.3093

Square

The Square scheme is like the rectangle color scheme, but the four colors are evenly spaced on the color wheel.



37.9611, 0.3586, 0.3635



37.9611, 0.2941, 0.3547



37.9611, 0.2685, 0.2933



37.9611, 0.3305, 0.3052

Rectangle

The Rectangle color scheme consists of four colors that form a rectangle on the color wheel.



37.9611, 0.3586, 0.3635



37.9611, 0.3272, 0.3726



37.9611, 0.2685, 0.2933



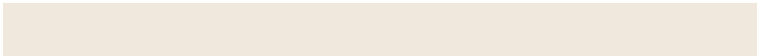
37.9611, 0.2969, 0.2892

Sweetspot

The Sweet Spot groups the original color and five complimentary colors.



37.9628, 0.3586, 0.3635



80.5407, 0.3255, 0.3393



30.7569, 0.3413, 0.2971



17.1195, 0.3280, 0.3413



93.3107, 0.3127, 0.3290



18.7317, 0.3127, 0.3290

Same Dimension

The Same Dimension uses a secret algorithm to generate beautiful new colors.



37.9628, 0.3586, 0.3635



64.4146, 0.3704, 0.3712



46.7372, 0.3506, 0.3930



9.7644, 0.3275, 0.3409



12.8973, 0.5329, 0.4150



0.5779, 0.4962, 0.4442

Inverse Universe

The Inverse Universe completely reimagines the original color for something new.



33.9803, 0.2719, 0.2918



56.1070, 0.2628, 0.2826



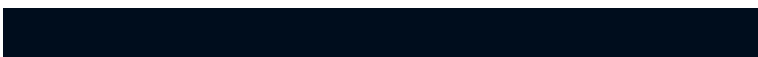
26.7836, 0.2693, 0.2562



9.4112, 0.2985, 0.3168



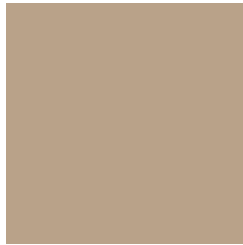
7.3660, 0.1759, 0.1533



0.3837, 0.1894, 0.2019

Previews

White Background



This preview shows how the Yxy color 37.9611, 0.3586, 0.3635 looks on a white background.

Color Contrast Check

Large Text (above 18pt) WCAG AA × Fail

Any Text WCAG AA × Fail

Large Text (above 18pt) WCAG AAA × Fail

Any Text WCAG AAA × Fail

Black Background



This preview shows how the Yxy color 37.9611, 0.3586, 0.3635 looks on a black background.

Color Contrast Check

Large Text (above 18pt) WCAG AA ✓ Pass

Any Text WCAG AA ✓ Pass

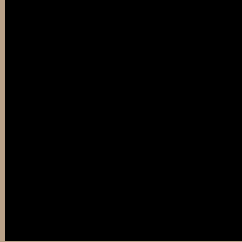
Large Text (above 18pt) WCAG AAA ✓ Pass

Any Text WCAG AAA ✓ Pass

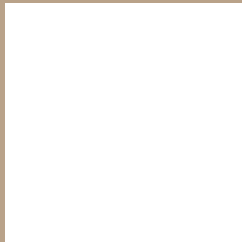
If you want to check with other color combinations, try the [Color Contrast Checker](#).

Yxy 37.9611, 0.3586, 0.3635

Background



This preview shows how black text looks on a background with the Yxy color 37.9611, 0.3586, 0.3635.



This preview shows how white text looks on a background with the Yxy color 37.9611, 0.3586, 0.3635.

Color Blindness Simulation

Color vision deficiency is a very complex topic, and I could not describe the different causes any better than Wikipedia does, so if you want to learn more, you should check out their [article about color blindness](#).

Dichromacy



Original Color

37.9611, 0.3586, 0.3635

Protanopia

37.8883, 0.3457, 0.3659

Deuteranopia

37.8377, 0.3658, 0.3574



Tritanopia

37.8350, 0.3321, 0.3118

Trichromacy



Original Color

37.9611, 0.3586, 0.3635

Protanomaly

37.9696, 0.3509, 0.3655

Deuteranomaly

37.7954, 0.3624, 0.3590

Tritanomaly

37.9563, 0.3422, 0.3304

Monochromacy



Original Color

37.9611, 0.3586, 0.3635

Achromatopsia

38.1326, 0.3127, 0.3290

Achromatomaly

38.1611, 0.3291, 0.3431

CSS Examples

Text

The CSS property to change the color of the text to Yxy 37.9611, 0.3586, 0.3635 is called "color". The color property can be set on classes, ids or directly on the HTML element.

This example shows how text in the color `rgb(185, 162, 137)` looks like.

```
.text, #text, p{  
    color:rgb(185, 162, 137)  
}
```

If you want to add a text shadow in that color use the text-shadow property, you can generate a text shadow directly with our [CSS Text Shadow Generator](#).

Here you see how black text with a 4 pixel rgb(185, 162, 137) colored shadow looks like.

```
.shadow{ text-shadow: 4px 4px 2px rgb(185, 162, 137) }
```

Border

The CSS property to change the border of an element to Yxy 37.9611, 0.3586, 0.3635 is called "border". The border property can be set on classes, ids or directly on the HTML element.

This example shows the color as border, it can be applied via the CSS property "border" or "border-color".

```
.border, #border, table{ border:4px solid rgb(185, 162, 137) }
```

If only the border color should be changed use the property `border-color`.

```
.border{ border-color:rgb(185, 162, 137) }
```

If you want to add a box shadow in that color use:

Here you see how a box with a 4 pixel `rgb(185, 162, 137)` colored shadow looks like.

```
.boxshadow{ -moz-box-shadow:4px 4px 4px 4px rgb(185, 162, 137); -webkit-box-shadow:4px 4px 4px 4px rgb(185, 162, 137); box-shadow:4px 4px 4px 4px rgb(185, 162, 137) }
```


Background

The CSS property to change the background color of an element to Yxy 37.9611, 0.3586, 0.3635 is called "background". The background property can be set on classes, ids or directly on the HTML element.

```
.background, #background, body{  
background: rgb(185, 162, 137) }
```

If only the background color should be changed can be used:

```
.background{ background-color: rgb(185,  
162, 137) }
```

This example shows the color as background, it is applied via the CSS property "background".

To optimize and compress your CSS code, you can use our [online CSS compressor and optimizer](#) based on csstidy. If you want to create a linear or radial gradient as background or border, check our [CSS Gradient Generator](#).

Hey! You found this booklet interesting? Support Converting Colors with the new Membership Option!

The pro membership hides all ads, plus gives you double the colors in the color bucket, and more awesome pro features!

[Learn more, Memberships starting at \\$2.50/m!](#)

**Follow me
on Twitter!**

@ConvertingColor