

Converting Colors

$Yxy(37.9738, 0.3413, 0.3299)$

Have a look what the booklet for
Yxy(37.9738, 0.3413, 0.3299)
contains.

Yxy(37.9908, 0.3413, 0.3291)	3
Conversions	4
Details	6
Harmonies	12
Previews	24
Color Blindness Simulation	27
CSS Examples	30

Color

Yxy(37.9908, 0.3413, 0.3291)

Conversions

Conversions Part 1

Format	Color
Hex	BC9F9F
RGB	188, 159, 159
RGB Percent	74%, 62%, 62%
CMY	0.2626, 0.3765, 0.3765
CMYK	0.00, 0.15, 0.15, 0.26
HSL	0°, 18%, 68%
HSV	0°, 15%, 74%
XYZ	39.3991, 37.9908, 38.0485
YIQ	167.6710, 17.2840, 6.1480

Conversions

Conversions Part 2

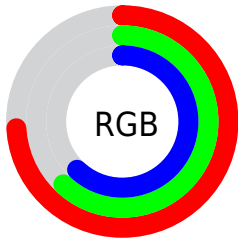
Format	Color
R_{YB}	188, 159, 159
Decimal	12361631
CIE _{Lab}	68.01, 10.68, 3.98
CIE _{LCh}	68, 11.398, 20.439
Yxy	37.9908, 0.3413, 0.3291
Android (android.graphics.Color)	4290551711 (0xFFBC9F9F)
YUV	167.6710, -4.2748, 17.8285
Hunter-Lab	61.6367, 6.2359, 6.5458

Details

The Yxy color **37.9908, 0.3413, 0.3291** is a light color, and the websafe version is hex **CC9999**. A complement of this color would be **46.9745, 0.2896, 0.3289**, and the grayscale version is **39.0048, 0.3127, 0.3290**.

A 20% lighter version of the original color is **72.1813, 0.3350, 0.3291**, and **16.8762, 0.3491, 0.3291** is the 20% darker color. If you saturate the color by 10%, you get **31.4090, 0.3658, 0.3292**, and if you desaturate by 10%, it is **45.6580, 0.3217, 0.3290**.

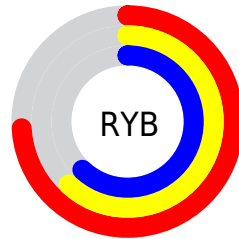
Distribution



Red (74%)

Green (62%)

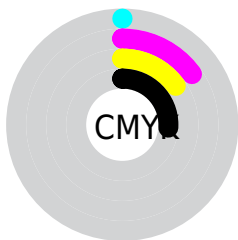
Blue (62%)



Red (74%)

Yellow (62%)

Blue (62%)

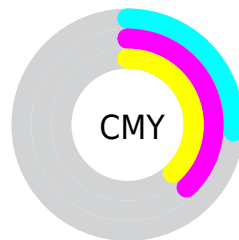


Cyan (0%)

Magenta (15%)

Yellow (15%)

Black (26%)



Cyan (26%)


Magenta (38%)


Yellow (38%)

Brightness & Saturation Gradients


These gradients show how the Yxy color 37.9908, 0.3413, 0.3291 changes by changing the brightness by 10 percent. The first figure shows a shift by +10% for each color and the second figure -10%.

Similar to the brightness gradients but the following saturation gradients show a change of the Yxy color 37.9908, 0.3413, 0.3291 by changing the saturation by 10% instead.


 37.9908, 0.3413,
0.3291


 37.9908, 0.3413,
0.3291

337.5805, 0.3264,
0.3292

 25.9755, 0.3452,
0.3290


 72.0940, 0.3358,
0.3292

 16.8053, 0.3503,
0.3289


 94.9508, 0.3337,
0.3292

 10.0958, 0.3574,
0.3287


122.1902, 0.3320,
0.3292

 5.4625, 0.3677,
0.3282

154.1966, 0.3306,
0.3292

 2.5211, 0.3841,
0.3273

191.3545, 0.3293,
0.3292

 0.8872, 0.4182,
0.3277

234.0482, 0.3282,

 0.0000, 1.0000,

0.3292

0.0000

282.6620, 0.3273,
0.3292

0.0000, 0.0000,
0.0000

37.9908, 0.3413,
0.3291

37.9908, 0.3413,
0.3291

31.4090, 0.3658,
0.3292

45.6580, 0.3217,
0.3290

25.8589, 0.3961,
0.3293

54.4512, 0.3060,
0.3290

21.2896, 0.4330,
0.3294

64.4151, 0.2934,
0.3289

17.6443, 0.4762,
0.3295

75.5904, 0.2832,
0.3289

14.8599, 0.5234,
0.3297

88.0159, 0.2750,
0.3289

■ 12.8658, 0.5699,
0.3298

■ 89.4351, 0.2742,
0.3289

■ 11.5800, 0.6083,
0.3299

■ 10.9015, 0.6322,
0.3300

■ 10.6971, 0.6400,
0.3300

Harmonies

Analogous

The Analogous color harmony consists of three colors that are next to each other on the color wheel.



37.9908, 0.3282, 0.3151



37.9908, 0.3413, 0.3291



37.9908, 0.3465, 0.3435

Triad

The Triadic color harmony groups three colors that are evenly spaced from another and form a triangle on the color wheel.



37.9908, 0.3413, 0.3291



37.9908, 0.3135, 0.3551



37.9908, 0.2837, 0.3032

Complementary

The Complementary color scheme is a pair of colors which are on the opposite of each other on the color wheel.



37.9908, 0.3413, 0.3291



46.9745, 0.2896, 0.3289

Split Complementary

Split-complementary colors differ from the complementary color scheme. The scheme consists of three colors, the original color and two neighbors of the complement color.



37.9908, 0.2801, 0.3131



37.9908, 0.3413, 0.3291



37.9908, 0.2970, 0.3435

Square

The Square scheme is like the rectangle color scheme, but the four colors are evenly spaced on the color wheel.



37.9908, 0.3413, 0.3291



37.9908, 0.3302, 0.3591



37.9908, 0.2849, 0.3279



37.9908, 0.2949, 0.3003

Rectangle

The Rectangle color scheme consists of four colors that form a rectangle on the color wheel.



37.9908, 0.3413, 0.3291



37.9908, 0.3448, 0.3515



37.9908, 0.2849, 0.3279



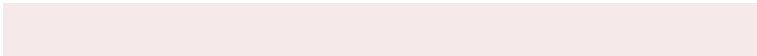
37.9908, 0.2816, 0.3058

Sweetspot

The Sweet Spot groups the original color and five complimentary colors.



37.9925, 0.3413, 0.3291



83.2669, 0.3211, 0.3290



39.1173, 0.3145, 0.2914



17.6810, 0.3223, 0.3290



95.5105, 0.3127, 0.3290



19.5994, 0.3127, 0.3290

Same Dimension

The Same Dimension uses a secret algorithm to generate beautiful new colors.



37.9925, 0.3413, 0.3291



63.9971, 0.3501, 0.3291



43.2792, 0.3384, 0.3483



9.5371, 0.3288, 0.3291



7.2809, 0.6400, 0.3300



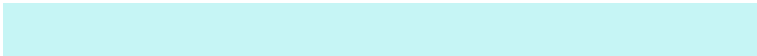
0.2854, 0.6399, 0.3301

Inverse Universe

The Inverse Universe completely reimagines the original color for something new.



46.9745, 0.2896, 0.3289



83.7958, 0.2842, 0.3289



41.0827, 0.2888, 0.3089



10.8088, 0.2985, 0.3289



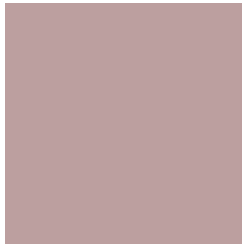
26.9343, 0.2246, 0.3286



1.0553, 0.2246, 0.3286

Previews

White Background



This preview shows how the Yxy color 37.9908, 0.3413, 0.3291 looks on a white background.

Color Contrast Check

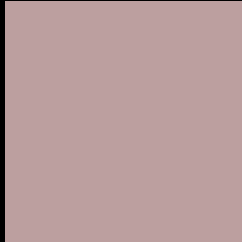
Large Text (above 18pt) WCAG AA × Fail

Any Text WCAG AA × Fail

Large Text (above 18pt) WCAG AAA × Fail

Any Text WCAG AAA × Fail

Black Background



This preview shows how the Yxy color 37.9908, 0.3413, 0.3291 looks on a black background.

Color Contrast Check

Large Text (above 18pt) WCAG AA ✓ Pass

Any Text WCAG AA ✓ Pass

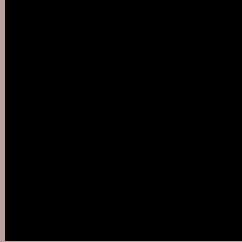
Large Text (above 18pt) WCAG AAA ✓ Pass

Any Text WCAG AAA ✓ Pass

If you want to check with other color combinations, try the [Color Contrast Checker](#).

Yxy 37.9908, 0.3413, 0.3291

Background



This preview shows how black text looks on a background with the Yxy color 37.9908, 0.3413, 0.3291.



This preview shows how white text looks on a background with the Yxy color 37.9908, 0.3413, 0.3291.

Color Blindness Simulation

Color vision deficiency is a very complex topic, and I could not describe the different causes any better than Wikipedia does, so if you want to learn more, you should check out their [article about color blindness](#).

Dichromacy



Original Color

37.9908, 0.3413, 0.3291

Protanopia

38.0649, 0.3200, 0.3333

Deuteranopia

37.9591, 0.3381, 0.3304



Tritanopia

37.8350, 0.3321, 0.3118

Trichromacy



Original Color

37.9908, 0.3413, 0.3291

Protanomaly

38.1147, 0.3279, 0.3318

Deuteranomaly

38.0839, 0.3391, 0.3304

Tritanomaly

38.0257, 0.3357, 0.3184

Monochromacy



Original Color

37.9908, 0.3413, 0.3291

Achromatopsia

39.1572, 0.3127, 0.3290

Achromatomaly

38.7408, 0.3221, 0.3290

CSS Examples

Text

The CSS property to change the color of the text to Yxy 37.9908, 0.3413, 0.3291 is called "color". The color property can be set on classes, ids or directly on the HTML element.

This example shows how text in the color `rgb(188, 159, 159)` looks like.

```
.text, #text, p{  
    color:rgb(188, 159, 159)  
}
```

If you want to add a text shadow in that color use the text-shadow property, you can generate a text shadow directly with our [CSS Text Shadow Generator](#).

Here you see how black text with a 4 pixel rgb(188, 159, 159) colored shadow looks like.

```
.shadow{ text-shadow: 4px 4px 2px rgb(188, 159, 159) }
```

Border

The CSS property to change the border of an element to Yxy 37.9908, 0.3413, 0.3291 is called "border". The border property can be set on classes, ids or directly on the HTML element.

This example shows the color as border, it can be applied via the CSS property "border" or "border-color".

```
.border, #border, table{ border:4px solid rgb(188, 159, 159) }
```

If only the border color should be changed use the property border-color.

```
.border{ border-color:rgb(188, 159, 159) }
```

If you want to add a box shadow in that color use:

Here you see how a box with a 4 pixel rgb(188, 159, 159) colored shadow looks like.

```
.boxshadow{ -moz-box-shadow:4px 4px 4px  
4px rgb(188, 159, 159); -webkit-box-  
shadow:4px 4px 4px 4px rgb(188, 159, 159);  
box-shadow:4px 4px 4px 4px rgb(188, 159,  
159) }
```


Background

The CSS property to change the background color of an element to Yxy 37.9908, 0.3413, 0.3291 is called "background". The background property can be set on classes, ids or directly on the HTML element.

```
.background, #background, body{  
background: rgb(188, 159, 159) }
```

If only the background color should be changed can be used:

```
.background{ background-color: rgb(188,  
159, 159) }
```

This example shows the color as background, it is applied via the CSS property "background".

To optimize and compress your CSS code, you can use our [online CSS compressor and optimizer](#) based on csstidy. If you want to create a linear or radial gradient as background or border, check our [CSS Gradient Generator](#).

Hey! You found this booklet interesting? Support Converting Colors with the new Membership Option!

The pro membership hides all ads, plus gives you double the colors in the color bucket, and more awesome pro features!

[Learn more, Memberships starting at \\$2.50/m!](#)

**Follow me
on Twitter!**

@ConvertingColor