

Converting Colors

$Yxy(38.2054, 0.3438, 0.3363)$

Have a look what the booklet for
Yxy(38.2054, 0.3438, 0.3363)
contains.

Yxy(38.0730, 0.3439, 0.3359)	3
Conversions	4
Details	6
Harmonies	12
Previews	24
Color Blindness Simulation	27
CSS Examples	30

Color

Yxy(38.0730, 0.3439, 0.3359)

Conversions

Conversions Part 1

Format	Color
Hex	BBA09B
RGB	187, 160, 155
RGB Percent	73%, 63%, 61%
CMY	0.2666, 0.3725, 0.3923
CMYK	0.00, 0.14, 0.17, 0.27
HSL	9°, 19%, 67%
HSV	9°, 17%, 73%
XYZ	38.9798, 38.0730, 36.2935
YIQ	167.5030, 17.6970, 4.1690

Conversions

Conversions Part 2

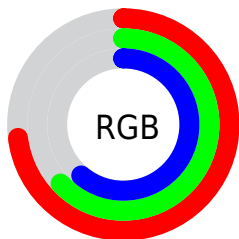
Format	Color
RYB	187, 161, 155
Decimal	12296347
CIELab	68.07, 9.09, 6.28
CIELCh	68, 11.052, 34.654
Yxy	38.0730, 0.3439, 0.3359
Android (android.graphics.Color)	4290486427 (0xFFBBA09B)
YUV	167.5030, -6.1640, 17.0989
Hunter-Lab	61.7033, 4.7828, 8.3184

Details

The Yxy color **38.0730, 0.3439, 0.3359** is a light color, and the websafe version is hex **CC9999**. A complement of this color would be **43.9997, 0.2869, 0.3220**, and the grayscale version is **38.9264, 0.3127, 0.3290**.

A 20% lighter version of the original color is **72.2590, 0.3377, 0.3354**, and **16.9233, 0.3528, 0.3385** is the 20% darker color. If you saturate the color by 10%, you get **32.3707, 0.3675, 0.3402**, and if you desaturate by 10%, it is **44.5690, 0.3244, 0.3318**.

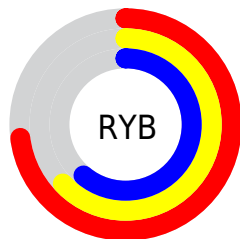
Distribution



Red (73%)

Green (63%)

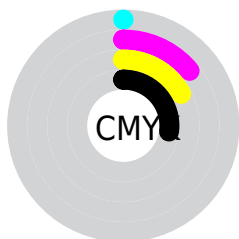
Blue (61%)



Red (73%)

Yellow (63%)

Blue (61%)

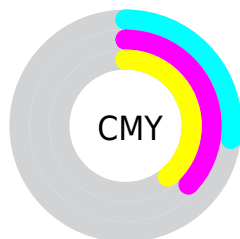


Cyan (0%)

Magenta (14%)

Yellow (17%)

Black (27%)



Cyan (27%)


Magenta (37%)


Yellow (39%)

Brightness & Saturation Gradients

These gradients show how the Yxy color 38.0730, 0.3439, 0.3359 changes by changing the brightness by 10 percent. The first figure shows a shift by +10% for each color and the second figure -10%.


Similar to the brightness gradients but the following saturation gradients show a change of the Yxy color 38.0730, 0.3439, 0.3359 by changing the saturation by 10% instead.


 38.0730, 0.3439,
0.3359


 38.0730, 0.3439,
0.3359


337.9330, 0.3277,
0.3325

 26.0394, 0.3482,
0.3367


 72.2200, 0.3379,
0.3347

 16.8531, 0.3538,
0.3377


 95.1022, 0.3356,
0.3342

 10.1298, 0.3615,
0.3391


122.3693, 0.3338,
0.3338

 5.4851, 0.3727,
0.3408

154.4057, 0.3322,
0.3335

 2.5346, 0.3906,
0.3432

191.5960, 0.3308,
0.3332

 0.8939, 0.4336,
0.3546

234.3243, 0.3296,

 0.0000, 1.0000,

0.3330

0.0000

282.9752, 0.3286,
0.3327

0.0000, 0.0000,
0.0000

38.0730, 0.3439,
0.3359

38.0730, 0.3439,
0.3359

32.3707, 0.3675,
0.3402

44.5690, 0.3244,
0.3318

27.4268, 0.3961,
0.3446

51.8824, 0.3084,
0.3279

23.2105, 0.4298,
0.3487

60.0419, 0.2953,
0.3244

19.6875, 0.4686,
0.3519

69.0736, 0.2844,
0.3212

16.8202, 0.5109,
0.3536

79.0023, 0.2753,
0.3183

■ 14.5676, 0.5533,
0.3529

■ 89.0425, 0.2736,
0.3284

■ 12.8839, 0.5908,
0.3494

■ 89.3054, 0.2736,
0.3289

■ 11.7153, 0.6183,
0.3434

■ 11.4623, 0.6249,
0.3420

Harmonies

Analogous

The Analogous color harmony consists of three colors that are next to each other on the color wheel.



38.0730, 0.3345, 0.3217



38.0730, 0.3439, 0.3359



38.0730, 0.3447, 0.3488

Triad

The Triadic color harmony groups three colors that are evenly spaced from another and form a triangle on the color wheel.



38.0730, 0.3439, 0.3359



38.0730, 0.3056, 0.3497



38.0730, 0.2889, 0.3018

Complementary

The Complementary color scheme is a pair of colors which are on the opposite of each other on the color wheel.



38.0730, 0.3439, 0.3359



43.9997, 0.2869, 0.3220

Split Complementary

Split-complementary colors differ from the complementary color scheme. The scheme consists of three colors, the original color and two neighbors of the complement color.



38.0730, 0.2817, 0.3083



38.0730, 0.3439, 0.3359



38.0730, 0.2912, 0.3361

Square

The Square scheme is like the rectangle color scheme, but the four colors are evenly spaced on the color wheel.



38.0730, 0.3439, 0.3359



38.0730, 0.3223, 0.3573



38.0730, 0.2825, 0.3208



38.0730, 0.3026, 0.3023

Rectangle

The Rectangle color scheme consists of four colors that form a rectangle on the color wheel.



38.0730, 0.3439, 0.3359



38.0730, 0.3402, 0.3549



38.0730, 0.2825, 0.3208



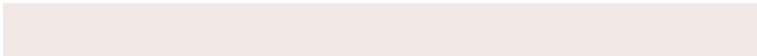
38.0730, 0.2857, 0.3032

Sweetspot

The Sweet Spot groups the original color and five complimentary colors.



38.0747, 0.3439, 0.3359



82.3780, 0.3209, 0.3310



37.3857, 0.3190, 0.2932



17.9450, 0.3221, 0.3312



95.5105, 0.3127, 0.3290



19.5994, 0.3127, 0.3290

Same Dimension

The Same Dimension uses a secret algorithm to generate beautiful new colors.



38.0747, 0.3439, 0.3359



63.7156, 0.3533, 0.3377



43.9013, 0.3404, 0.3567



9.7719, 0.3285, 0.3327



7.9672, 0.6233, 0.3433



0.3895, 0.5831, 0.3752

Inverse Universe

The Inverse Universe completely reimagines the original color for something new.



43.9997, 0.2869, 0.3220



76.5454, 0.2808, 0.3201



37.8943, 0.2859, 0.2996



10.5474, 0.2985, 0.3253



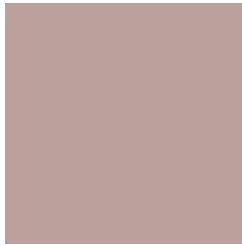
19.3214, 0.2108, 0.2789



0.8265, 0.2145, 0.2921

Previews

White Background



This preview shows how the Yxy color 38.0730, 0.3439, 0.3359 looks on a white background.

Color Contrast Check

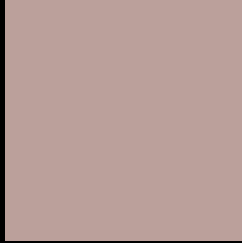
Large Text (above 18pt) WCAG AA × Fail

Any Text WCAG AA × Fail

Large Text (above 18pt) WCAG AAA × Fail

Any Text WCAG AAA × Fail

Black Background



This preview shows how the Yxy color 38.0730, 0.3439, 0.3359 looks on a black background.

Color Contrast Check

Large Text (above 18pt) WCAG AA ✓ Pass

Any Text WCAG AA ✓ Pass

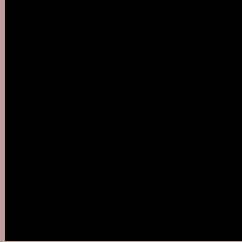
Large Text (above 18pt) WCAG AAA ✓ Pass

Any Text WCAG AAA ✓ Pass

If you want to check with other color combinations, try the [Color Contrast Checker](#).

Yxy 38.0730, 0.3439, 0.3359

Background



This preview shows how black text looks on a background with the Yxy color 38.0730, 0.3439, 0.3359.



This preview shows how white text looks on a background with the Yxy color 38.0730, 0.3439, 0.3359.

Color Blindness Simulation

Color vision deficiency is a very complex topic, and I could not describe the different causes any better than Wikipedia does, so if you want to learn more, you should check out their [article about color blindness](#).

Dichromacy



Original Color

38.0730, 0.3439, 0.3359

Protanopia

38.0368, 0.3245, 0.3389

Deuteranopia

37.9473, 0.3429, 0.3359



Tritanopia

38.1748, 0.3320, 0.3131

Trichromacy



Original Color

38.0730, 0.3439, 0.3359

Protanomaly

37.9758, 0.3315, 0.3374

Deuteranomaly

37.9473, 0.3429, 0.3359

Tritanomaly

38.2043, 0.3355, 0.3210

Monochromacy



Original Color

38.0730, 0.3439, 0.3359

Achromatopsia

39.1572, 0.3127, 0.3290

Achromatomaly

38.6686, 0.3239, 0.3318

CSS Examples

Text

The CSS property to change the color of the text to Yxy 38.0730, 0.3439, 0.3359 is called "color". The color property can be set on classes, ids or directly on the HTML element.

This example shows how text in the color `rgb(187, 160, 155)` looks like.

```
.text, #text, p{  
    color:rgb(187, 160, 155)  
}
```

If you want to add a text shadow in that color use the text-shadow property, you can generate a text shadow directly with our [CSS Text Shadow Generator](#).

Here you see how black text with a 4 pixel rgb(187, 160, 155) colored shadow looks like.

```
.shadow{ text-shadow: 4px 4px 2px rgb(187, 160, 155) }
```

Border

The CSS property to change the border of an element to Yxy 38.0730, 0.3439, 0.3359 is called "border". The border property can be set on classes, ids or directly on the HTML element.

This example shows the color as border, it can be applied via the CSS property "border" or "border-color".

```
.border, #border, table{ border:4px solid rgb(187, 160, 155) }
```

If only the border color should be changed use the property `border-color`.

```
.border{ border-color:rgb(187, 160, 155) }
```

If you want to add a box shadow in that color use:

Here you see how a box with a 4 pixel `rgb(187, 160, 155)` colored shadow looks like.

```
.boxshadow{ -moz-box-shadow:4px 4px 4px  
4px rgb(187, 160, 155); -webkit-box-  
shadow:4px 4px 4px 4px rgb(187, 160, 155);  
box-shadow:4px 4px 4px 4px rgb(187, 160,  
155) }
```


Background

The CSS property to change the background color of an element to Yxy 38.0730, 0.3439, 0.3359 is called "background". The background property can be set on classes, ids or directly on the HTML element.

```
.background, #background, body{  
background: rgb(187, 160, 155) }
```

If only the background color should be changed can be used:

```
.background{ background-color: rgb(187,  
160, 155) }
```

This example shows the color as background, it is applied via the CSS property "background".

To optimize and compress your CSS code, you can use our [online CSS compressor and optimizer](#) based on csstidy. If you want to create a linear or radial gradient as background or border, check our [CSS Gradient Generator](#).

Hey! You found this booklet interesting? Support Converting Colors with the new Membership Option!

The pro membership hides all ads, plus gives you double the colors in the color bucket, and more awesome pro features!

[Learn more, Memberships starting at \\$2.50/m!](#)

**Follow me
on Twitter!**

@ConvertingColor