

Converting Colors

$Yxy(38.2330, 0.3476, 0.3388)$

Have a look what the booklet for
Yxy(38.2330, 0.3476, 0.3388)
contains.

Yxy(38.2603, 0.3478, 0.3385)	3
Conversions	4
Details	6
Harmonies	12
Previews	24
Color Blindness Simulation	27
CSS Examples	30

Color

Yxy(38.2603, 0.3478, 0.3385)

Conversions

Conversions Part 1

Format	Color
Hex	BDA099
RGB	189, 160, 153
RGB Percent	74%, 63%, 60%
CMY	0.2587, 0.3726, 0.3999
CMYK	0.00, 0.15, 0.19, 0.26
HSL	12°, 21%, 67%
HSV	12°, 19%, 74%
XYZ	39.3115, 38.2603, 35.4572
YIQ	167.8730, 19.5310, 3.9710

Conversions

Conversions Part 2

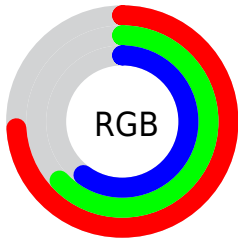
Format	Color
R _Y B	189, 162, 153
Decimal	12427417
CIE Lab	68.21, 9.55, 7.60
CIE LCh	68, 12.201, 38.499
Yxy	38.2603, 0.3478, 0.3385
Android (android.graphics.Color)	4290617497 (0xFFBDA099)
YUV	167.8730, -7.3324, 18.5284
Hunter-Lab	61.8549, 5.1984, 9.3115

Details

The Yxy color **38.2603, 0.3478, 0.3385** is a light color, and the websafe version is hex **CC9999**. A complement of this color would be **43.9220, 0.2840, 0.3193**, and the grayscale version is **39.1239, 0.3127, 0.3290**.

A 20% lighter version of the original color is **72.6987, 0.3415, 0.3374**, and **17.0475, 0.3584, 0.3421** is the 20% darker color. If you saturate the color by 10%, you get **32.7226, 0.3719, 0.3439**, and if you desaturate by 10%, it is **44.5480, 0.3278, 0.3334**.

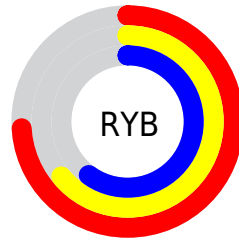
Distribution



Red (74%)

Green (63%)

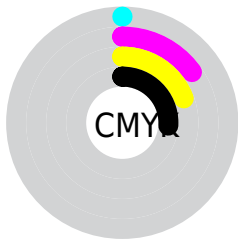
Blue (60%)



Red (74%)

Yellow (64%)

Blue (60%)

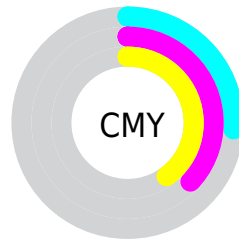


Cyan (0%)

Magenta (15%)

Yellow (19%)

Black (26%)



Cyan (26%)


Magenta (37%)


Yellow (40%)

Brightness & Saturation Gradients


These gradients show how the Yxy color 38.2603, 0.3478, 0.3385 changes by changing the brightness by 10 percent. The first figure shows a shift by +10% for each color and the second figure -10%.

Similar to the brightness gradients but the following saturation gradients show a change of the Yxy color 38.2603, 0.3478, 0.3385 by changing the saturation by 10% instead.


 38.2603, 0.3478,
0.3385


 38.2603, 0.3478,
0.3385


338.7353, 0.3296,
0.3338

 26.1848, 0.3526,
0.3396


 72.5069, 0.3410,
0.3368

 16.9619, 0.3589,
0.3411


 95.4468, 0.3385,
0.3362

 10.2073, 0.3675,
0.3429


122.7770, 0.3364,
0.3357

 5.5367, 0.3801,
0.3454

154.8818, 0.3346,
0.3352

 2.5654, 0.4001,
0.3488

192.1456, 0.3331,
0.3348

 0.9093, 0.4510,
0.3649

234.9529, 0.3318,

 0.0000, 1.0000,

0.3344

0.0000

283.6880, 0.3306,
0.3341

0.0000, 0.0000,
0.0000

38.2603, 0.3478,
0.3385

38.2603, 0.3478,
0.3385

32.7226, 0.3719,
0.3439

44.5480, 0.3278,
0.3334

27.9018, 0.4007,
0.3492

51.6070, 0.3113,
0.3286

23.7698, 0.4345,
0.3541

59.4642, 0.2976,
0.3241

20.2948, 0.4728,
0.3579

68.1436, 0.2862,
0.3201

17.4424, 0.5140,
0.3597

77.6682, 0.2767,
0.3165

■ 15.1750, 0.5547,
0.3587

■ 87.3019, 0.2743,
0.3251

■ 13.4506, 0.5902,
0.3542

■ 89.5614, 0.2747,
0.3289

■ 12.2173, 0.6167,
0.3473

■ 12.1220, 0.6190,
0.3467

Harmonies

Analogous

The Analogous color harmony consists of three colors that are next to each other on the color wheel.



38.2603, 0.3385, 0.3229



38.2603, 0.3478, 0.3385



38.2603, 0.3473, 0.3522

Triad

The Triadic color harmony groups three colors that are evenly spaced from another and form a triangle on the color wheel.



38.2603, 0.3478, 0.3385



38.2603, 0.3026, 0.3502



38.2603, 0.2881, 0.2987

Complementary

The Complementary color scheme is a pair of colors which are on the opposite of each other on the color wheel.



38.2603, 0.3478, 0.3385



43.9220, 0.2840, 0.3193

Split Complementary

Split-complementary colors differ from the complementary color scheme. The scheme consists of three colors, the original color and two neighbors of the complement color.



38.2603, 0.2792, 0.3048



38.2603, 0.3478, 0.3385



38.2603, 0.2873, 0.3346

Square

The Square scheme is like the rectangle color scheme, but the four colors are evenly spaced on the color wheel.



38.2603, 0.3478, 0.3385



38.2603, 0.3209, 0.3597



38.2603, 0.2789, 0.3178



38.2603, 0.3038, 0.3003

Rectangle

The Rectangle color scheme consists of four colors that form a rectangle on the color wheel.



38.2603, 0.3478, 0.3385



38.2603, 0.3416, 0.3584



38.2603, 0.2789, 0.3178



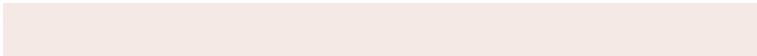
38.2603, 0.2843, 0.2999

Sweetspot

The Sweet Spot groups the original color and five complimentary colors.



38.2620, 0.3478, 0.3385



83.3506, 0.3226, 0.3319



37.0044, 0.3209, 0.2906



17.7521, 0.3237, 0.3322



95.5105, 0.3127, 0.3290



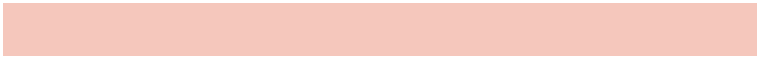
19.5994, 0.3127, 0.3290

Same Dimension

The Same Dimension uses a secret algorithm to generate beautiful new colors.



38.2620, 0.3478, 0.3385



64.0642, 0.3577, 0.3408



44.8113, 0.3436, 0.3615



9.8277, 0.3284, 0.3335



8.2407, 0.6170, 0.3483



0.4139, 0.5724, 0.3837

Inverse Universe

The Inverse Universe completely reimagines the original color for something new.



43.9220, 0.2840, 0.3193



76.1160, 0.2777, 0.3169



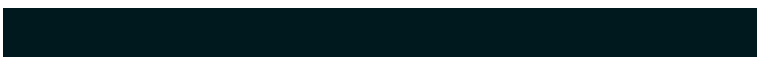
37.1499, 0.2825, 0.2942



10.4867, 0.2985, 0.3244



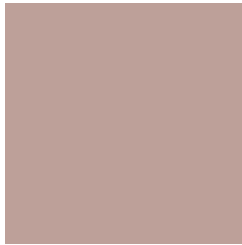
17.7689, 0.2074, 0.2664



0.7780, 0.2120, 0.2830

Previews

White Background



This preview shows how the Yxy color 38.2603, 0.3478, 0.3385 looks on a white background.

Color Contrast Check

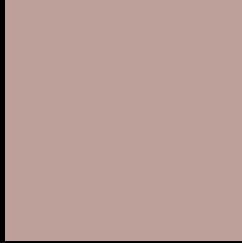
Large Text (above 18pt) WCAG AA × Fail

Any Text WCAG AA × Fail

Large Text (above 18pt) WCAG AAA × Fail

Any Text WCAG AAA × Fail

Black Background



This preview shows how the Yxy color 38.2603, 0.3478, 0.3385 looks on a black background.

Color Contrast Check

Large Text (above 18pt) WCAG AA ✓ Pass

Any Text WCAG AA ✓ Pass

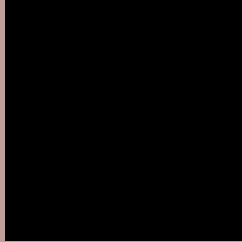
Large Text (above 18pt) WCAG AAA ✓ Pass

Any Text WCAG AAA ✓ Pass

If you want to check with other color combinations, try the [Color Contrast Checker](#).

Yxy 38.2603, 0.3478, 0.3385

Background



This preview shows how black text looks on a background with the Yxy color 38.2603, 0.3478, 0.3385.



This preview shows how white text looks on a background with the Yxy color 38.2603, 0.3478, 0.3385.

Color Blindness Simulation

Color vision deficiency is a very complex topic, and I could not describe the different causes any better than Wikipedia does, so if you want to learn more, you should check out their [article about color blindness](#).

Dichromacy



Original Color

38.2603, 0.3478, 0.3385

Protanopia

38.4434, 0.3271, 0.3431

Deuteranopia

38.4810, 0.3466, 0.3399



Tritanopia

38.0926, 0.3341, 0.3119

Trichromacy



Original Color

38.2603, 0.3478, 0.3385

Protanomaly

38.3825, 0.3342, 0.3416

Deuteranomaly

38.4810, 0.3466, 0.3399

Tritanomaly

38.0812, 0.3386, 0.3211

Monochromacy



Original Color

38.2603, 0.3478, 0.3385

Achromatopsia

39.1572, 0.3127, 0.3290

Achromatomaly

38.7847, 0.3248, 0.3318

CSS Examples

Text

The CSS property to change the color of the text to Yxy 38.2603, 0.3478, 0.3385 is called "color". The color property can be set on classes, ids or directly on the HTML element.

This example shows how text in the color `rgb(189, 160, 153)` looks like.

```
.text, #text, p{  
    color:rgb(189, 160, 153)  
}
```

If you want to add a text shadow in that color use the text-shadow property, you can generate a text shadow directly with our [CSS Text Shadow Generator](#).

Here you see how black text with a 4 pixel rgb(189, 160, 153) colored shadow looks like.

```
.shadow{ text-shadow: 4px 4px 2px rgb(189, 160, 153) }
```

Border

The CSS property to change the border of an element to Yxy 38.2603, 0.3478, 0.3385 is called "border". The border property can be set on classes, ids or directly on the HTML element.

This example shows the color as border, it can be applied via the CSS property "border" or "border-color".

```
.border, #border, table{ border:4px solid rgb(189, 160, 153) }
```

If only the border color should be changed use the property `border-color`.

```
.border{ border-color:rgb(189, 160, 153) }
```

If you want to add a box shadow in that color use:

Here you see how a box with a 4 pixel `rgb(189, 160, 153)` colored shadow looks like.

```
.boxshadow{ -moz-box-shadow:4px 4px 4px  
4px rgb(189, 160, 153); -webkit-box-  
shadow:4px 4px 4px 4px rgb(189, 160, 153);  
box-shadow:4px 4px 4px 4px rgb(189, 160,  
153) }
```


Background

The CSS property to change the background color of an element to Yxy 38.2603, 0.3478, 0.3385 is called "background". The background property can be set on classes, ids or directly on the HTML element.

```
.background, #background, body{  
background: rgb(189, 160, 153) }
```

If only the background color should be changed can be used:

```
.background{ background-color: rgb(189,  
160, 153) }
```

This example shows the color as background, it is applied via the CSS property "background".

To optimize and compress your CSS code, you can use our [online CSS compressor and optimizer](#) based on csstidy. If you want to create a linear or radial gradient as background or border, check our [CSS Gradient Generator](#).

Hey! You found this booklet interesting? Support Converting Colors with the new Membership Option!

The pro membership hides all ads, plus gives you double the colors in the color bucket, and more awesome pro features!

[Learn more, Memberships starting at \\$2.50/m!](#)

**Follow me
on Twitter!**

@ConvertingColor