

Converting Colors

$Yxy(38.2581, 0.3601, 0.3267)$

Have a look what the booklet for
Yxy(38.2581, 0.3601, 0.3267)
contains.

Yxy(38.2080, 0.3606, 0.3266)	3
<i>Conversions</i>	4
<i>Details</i>	6
<i>Harmonies</i>	12
<i>Previews</i>	24
<i>Color Blindness Simulation</i>	27
<i>CSS Examples</i>	30

Color

Yxy(38.2080, 0.3606, 0.3266)

Conversions

Conversions Part 1

Format	Color
Hex	CB9A9C
RGB	203, 154, 156
RGB Percent	80%, 60%, 61%
CMY	0.2039, 0.3961, 0.3883
CMYK	0.00, 0.24, 0.23, 0.20
HSL	358°, 32%, 70%
HSV	358°, 24%, 80%
XYZ	42.1856, 38.2080, 36.5936
YIQ	168.8790, 28.5620, 11.0100

Conversions

Conversions Part 2

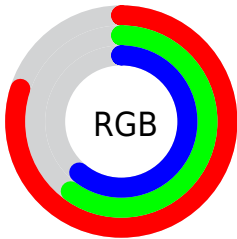
Format	Color
R _Y B	203, 154, 156
Decimal	13343388
CIE Lab	68.17, 18.58, 6.07
CIE LCh	68, 19.548, 18.104
Yxy	38.2080, 0.3606, 0.3266
Android (android.graphics.Color)	4291533468 (0xFFCB9A9C)
YUV	168.8790, -6.3493, 29.9241
Hunter-Lab	61.8126, 13.6497, 8.1687

Details

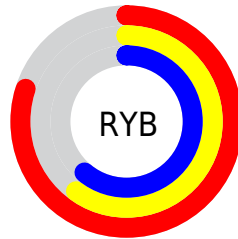
The Yxy color **38.2080, 0.3606, 0.3266** is a light color, and the websafe version is hex **CC9999**. A complement of this color would be **53.8063, 0.2787, 0.3315**, and the grayscale version is **39.6353, 0.3127, 0.3290**.

A 20% lighter version of the original color is **71.5141, 0.3472, 0.3281**, and **17.0163, 0.3754, 0.3257** is the 20% darker color. If you saturate the color by 10%, you get **31.4576, 0.3891, 0.3256**, and if you desaturate by 10%, it is **46.2011, 0.3376, 0.3276**.

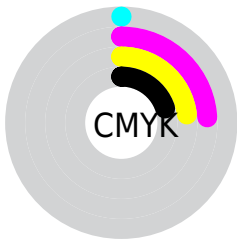
Distribution



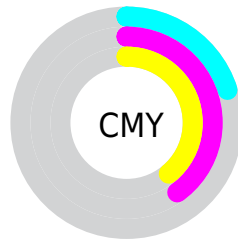
- Red (80%)
- Green (60%)
- Blue (61%)



- Red (80%)
- Yellow (60%)
- Blue (61%)



- Cyan (0%)
- Magenta (24%)
- Yellow (23%)
- Black (20%)





- Cyan (20%)
- Magenta (40%)
- Yellow (39%)

Brightness & Saturation Gradients

These gradients show how the Yxy color 38.2080, 0.3606, 0.3266 changes by changing the brightness by 10 percent. The first figure shows a shift by +10% for each color and the second figure -10%.


Similar to the brightness gradients but the following saturation gradients show a change of the Yxy color 38.2080, 0.3606, 0.3266 by changing the saturation by 10% instead.


 38.2080, 0.3606,
0.3266

 38.2080, 0.3606,
0.3266


338.5114, 0.3357,
0.3282

 26.1442, 0.3671,
0.3261


 72.4268, 0.3513,
0.3273

 16.9315, 0.3757,
0.3253


 95.3506, 0.3479,
0.3275

 10.1857, 0.3875,
0.3241


122.6632, 0.3450,
0.3277

 5.5222, 0.4047,
0.3220

154.7489, 0.3426,
0.3278

 2.5568, 0.4319,
0.3182

191.9922, 0.3405,
0.3280

 0.9050, 0.4899,
0.3150

234.7775, 0.3387,

 0.0000, 1.0000,

0.3280

0.0000

283.4890, 0.3371,
0.3281

■ 0.0000, 0.0000,
0.0000

■ 38.2080, 0.3606,
0.3266

■ 38.2080, 0.3606,
0.3266

■ 31.4576, 0.3891,
0.3256

■ 46.2011, 0.3376,
0.3276

■ 25.8826, 0.4239,
0.3247

■ 55.4891, 0.3192,
0.3286

■ 21.4172, 0.4650,
0.3240

■ 66.1281, 0.3045,
0.3295

■ 17.9874, 0.5108,
0.3238

■ 78.1689, 0.2926,
0.3304

■ 15.5099, 0.5573,
0.3242

■ 91.3350, 0.2830,
0.3306

■ 13.8887, 0.5981,
0.3255

■ 91.4381, 0.2822,
0.3289

■ 13.0076, 0.6263,
0.3274

■ 12.7160, 0.6363,
0.3279

Harmonies

Analogous

The Analogous color harmony consists of three colors that are next to each other on the color wheel.



38.2080, 0.3369, 0.3039



38.2080, 0.3606, 0.3266



38.2080, 0.3708, 0.3509

Triad

The Triadic color harmony groups three colors that are evenly spaced from another and form a triangle on the color wheel.



38.2080, 0.3606, 0.3266



38.2080, 0.3159, 0.3758



38.2080, 0.2628, 0.2859

Complementary

The Complementary color scheme is a pair of colors which are on the opposite of each other on the color wheel.



38.2080, 0.3606, 0.3266



53.8063, 0.2787, 0.3315

Split Complementary

Split-complementary colors differ from the complementary color scheme. The scheme consists of three colors, the original color and two neighbors of the complement color.



38.2080, 0.2579, 0.3029



38.2080, 0.3606, 0.3266



38.2080, 0.2877, 0.3561

Square

The Square scheme is like the rectangle color scheme, but the four colors are evenly spaced on the color wheel.



38.2080, 0.3606, 0.3266



38.2080, 0.3441, 0.3809



38.2080, 0.2668, 0.3286



38.2080, 0.2805, 0.2808

Rectangle

The Rectangle color scheme consists of four colors that form a rectangle on the color wheel.



38.2080, 0.3606, 0.3266



38.2080, 0.3684, 0.3652



38.2080, 0.2668, 0.3286



38.2080, 0.2596, 0.2903

Sweetspot

The Sweet Spot groups the original color and five complimentary colors.



38.2098, 0.3606, 0.3266



88.0806, 0.3242, 0.3283



39.7812, 0.3132, 0.2691



18.6443, 0.3253, 0.3283



0.0000, 0.0000, 0.0000



21.4041, 0.3127, 0.3290

Same Dimension

The Same Dimension uses a secret algorithm to generate beautiful new colors.



38.2098, 0.3606, 0.3266



57.7900, 0.3748, 0.3261



46.1042, 0.3562, 0.3570



11.2209, 0.3284, 0.3281



8.0946, 0.6352, 0.3273



0.4202, 0.6192, 0.3185

Inverse Universe

The Inverse Universe completely reimagines the original color for something new.



38.2098, 0.3606, 0.3266



57.7900, 0.3748, 0.3261



44.2131, 0.2750, 0.2993



11.2209, 0.3284, 0.3281



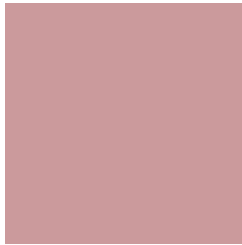
8.0946, 0.6352, 0.3273



0.4202, 0.6192, 0.3185

Previews

White Background



This preview shows how the Yxy color 38.2080, 0.3606, 0.3266 looks on a white background.

Color Contrast Check

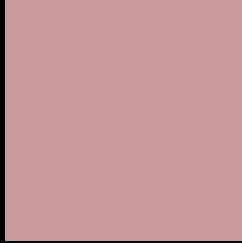
Large Text (above 18pt) WCAG AA × Fail

Any Text WCAG AA × Fail

Large Text (above 18pt) WCAG AAA × Fail

Any Text WCAG AAA × Fail

Black Background



This preview shows how the Yxy color 38.2080, 0.3606, 0.3266 looks on a black background.

Color Contrast Check

Large Text (above 18pt) WCAG AA ✓ Pass

Any Text WCAG AA ✓ Pass

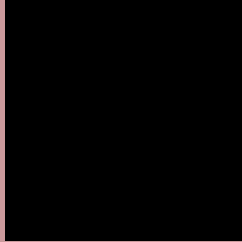
Large Text (above 18pt) WCAG AAA ✓ Pass

Any Text WCAG AAA ✓ Pass

If you want to check with other color combinations, try the [Color Contrast Checker](#).

Yxy 38.2080, 0.3606, 0.3266

Background



This preview shows how black text looks on a background with the Yxy color 38.2080, 0.3606, 0.3266.



This preview shows how white text looks on a background with the Yxy color 38.2080, 0.3606, 0.3266.

Color Blindness Simulation

Color vision deficiency is a very complex topic, and I could not describe the different causes any better than Wikipedia does, so if you want to learn more, you should check out their [article about color blindness](#).

Dichromacy



Original Color

38.2080, 0.3606, 0.3266

Protanopia

38.4271, 0.3199, 0.3347

Deuteranopia

38.4211, 0.3436, 0.3372



Tritanopia

38.3002, 0.3537, 0.3151

Trichromacy



Original Color

38.2080, 0.3606, 0.3266

Protanomaly

38.3238, 0.3338, 0.3318

Deuteranomaly

38.1577, 0.3504, 0.3331

Tritanomaly

38.1930, 0.3568, 0.3189

Monochromacy



Original Color

38.2080, 0.3606, 0.3266

Achromatopsia

39.6755, 0.3127, 0.3290

Achromatomaly

39.0550, 0.3289, 0.3290

CSS Examples

Text

The CSS property to change the color of the text to Yxy 38.2080, 0.3606, 0.3266 is called "color". The color property can be set on classes, ids or directly on the HTML element.

This example shows how text in the color `rgb(203, 154, 156)` looks like.

```
.text, #text, p{  
    color:rgb(203, 154, 156)  
}
```

If you want to add a text shadow in that color use the text-shadow property, you can generate a text shadow directly with our [CSS Text Shadow Generator](#).

Here you see how black text with a 4 pixel rgb(203, 154, 156) colored shadow looks like.

```
.shadow{ text-shadow: 4px 4px 2px rgb(203, 154, 156) }
```

Border

The CSS property to change the border of an element to Yxy 38.2080, 0.3606, 0.3266 is called "border". The border property can be set on classes, ids or directly on the HTML element.

This example shows the color as border, it can be applied via the CSS property "border" or "border-color".

```
.border, #border, table{ border:4px solid rgb(203, 154, 156) }
```

If only the border color should be changed use the property `border-color`.

```
.border{ border-color:rgb(203, 154, 156) }
```

If you want to add a box shadow in that color use:

Here you see how a box with a 4 pixel `rgb(203, 154, 156)` colored shadow looks like.

```
.boxshadow{ -moz-box-shadow:4px 4px 4px  
4px rgb(203, 154, 156); -webkit-box-  
shadow:4px 4px 4px 4px rgb(203, 154, 156);  
box-shadow:4px 4px 4px 4px rgb(203, 154,  
156) }
```


Background

The CSS property to change the background color of an element to Yxy 38.2080, 0.3606, 0.3266 is called "background". The background property can be set on classes, ids or directly on the HTML element.

```
.background, #background, body{  
background: rgb(203, 154, 156) }
```

If only the background color should be changed can be used:

```
.background{ background-color: rgb(203,  
154, 156) }
```

This example shows the color as background, it is applied via the CSS property "background".

To optimize and compress your CSS code, you can use our [online CSS compressor and optimizer](#) based on csstidy. If you want to create a linear or radial gradient as background or border, check our [CSS Gradient Generator](#).

Hey! You found this booklet interesting? Support Converting Colors with the new Membership Option!

The pro membership hides all ads, plus gives you double the colors in the color bucket, and more awesome pro features!

[Learn more, Memberships starting at \\$2.50/m!](#)

**Follow me
on Twitter!**

@ConvertingColor