

Converting Colors

$Yxy(38.4115, 0.3594, 0.3283)$

Have a look what the booklet for
Yxy(38.4115, 0.3594, 0.3283)
contains.

Yxy(38.3995, 0.3593, 0.3279)	3
<i>Conversions</i>	4
<i>Details</i>	6
<i>Harmonies</i>	12
<i>Previews</i>	24
<i>Color Blindness Simulation</i>	27
<i>CSS Examples</i>	30

Color

Yxy(38.3995, 0.3593, 0.3279)

Conversions

Conversions Part 1

Format	Color
Hex	CA9B9C
RGB	202, 155, 156
RGB Percent	79%, 61%, 61%
CMY	0.2078, 0.3921, 0.3884
CMYK	0.00, 0.23, 0.23, 0.21
HSL	359°, 31%, 70%
HSV	359°, 23%, 79%
XYZ	42.0767, 38.3995, 36.6312
YIQ	169.1670, 27.6910, 10.2750

Conversions

Conversions Part 2

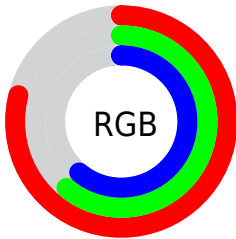
Format	Color
R _Y B	202, 155, 156
Decimal	13278108
CIE Lab	68.31, 17.65, 6.27
CIE LCh	68, 18.728, 19.557
Yxy	38.3995, 0.3593, 0.3279
Android (android.graphics.Color)	4291468188 (0xFFCA9B9C)
YUV	169.1670, -6.4913, 28.7945
Hunter-Lab	61.9673, 12.7611, 8.3286

Details

The Yxy color **38.3995, 0.3593, 0.3279** is a light color, and the websafe version is hex **CC9999**. A complement of this color would be **53.4293, 0.2792, 0.3302**, and the grayscale version is **39.7856, 0.3127, 0.3290**.

A 20% lighter version of the original color is **72.0063, 0.3470, 0.3291**, and **17.1236, 0.3735, 0.3274** is the 20% darker color. If you saturate the color by 10%, you get **31.6138, 0.3879, 0.3274**, and if you desaturate by 10%, it is **46.4227, 0.3363, 0.3284**.

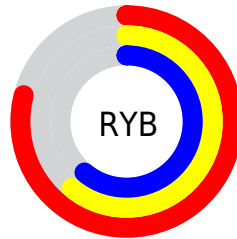
Distribution



Red (79%)

Green (61%)

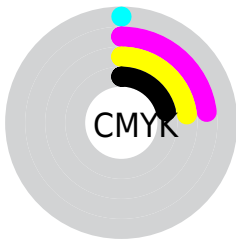
Blue (61%)



Red (79%)

Yellow (61%)

Blue (61%)

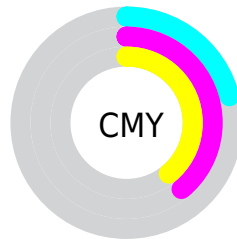


Cyan (0%)

Magenta (23%)

Yellow (23%)

Black (21%)



Cyan (21%)


Magenta (39%)


Yellow (39%)

Brightness & Saturation Gradients


These gradients show how the Yxy color 38.3995, 0.3593, 0.3279 changes by changing the brightness by 10 percent. The first figure shows a shift by +10% for each color and the second figure -10%.


Similar to the brightness gradients but the following saturation gradients show a change of the Yxy color 38.3995, 0.3593, 0.3279 by changing the saturation by 10% instead.


 38.3995, 0.3593,
0.3279


 38.3995, 0.3593,
0.3279


339.3306, 0.3351,
0.3288

 26.2929, 0.3657,
0.3275


 72.7201, 0.3503,
0.3283

 17.0429, 0.3740,
0.3270


 95.7028, 0.3470,
0.3285

 10.2651, 0.3855,
0.3261


123.0797, 0.3442,
0.3286

 5.5751, 0.4021,
0.3245

155.2352, 0.3418,
0.3286

 2.5885, 0.4284,
0.3214

192.5536, 0.3398,
0.3287

 0.9209, 0.4846,
0.3197

235.4194, 0.3380,

 0.0000, 1.0000,

0.3288

0.0000

284.2169, 0.3365,
0.3288

■ 0.0000, 0.0000,
0.0000

■ 38.3995, 0.3593,
0.3279

■ 38.3995, 0.3593,
0.3279

■ 31.6138, 0.3879,
0.3274

■ 46.4227, 0.3363,
0.3284

■ 25.9990, 0.4228,
0.3270

■ 55.7349, 0.3179,
0.3289

■ 21.4905, 0.4642,
0.3267

■ 66.3913, 0.3032,
0.3293

■ 18.0152, 0.5105,
0.3267

■ 78.4423, 0.2913,
0.3297

■ 15.4913, 0.5575,
0.3270

■ 91.2906, 0.2817,
0.3290

■ 13.8247, 0.5987,
0.3277

■ 91.2965, 0.2816,
0.3289

■ 12.9021, 0.6270,
0.3287

■ 12.5655, 0.6381,
0.3289

Harmonies

Analogous

The Analogous color harmony consists of three colors that are next to each other on the color wheel.



38.3995, 0.3372, 0.3059



38.3995, 0.3593, 0.3279



38.3995, 0.3683, 0.3511

Triad

The Triadic color harmony groups three colors that are evenly spaced from another and form a triangle on the color wheel.



38.3995, 0.3593, 0.3279



38.3995, 0.3144, 0.3730



38.3995, 0.2654, 0.2872

Complementary

The Complementary color scheme is a pair of colors which are on the opposite of each other on the color wheel.



38.3995, 0.3593, 0.3279



53.4293, 0.2792, 0.3302

Split Complementary

Split-complementary colors differ from the complementary color scheme. The scheme consists of three colors, the original color and two neighbors of the complement color.



38.3995, 0.2601, 0.3030



38.3995, 0.3593, 0.3279



38.3995, 0.2876, 0.3537

Square

The Square scheme is like the rectangle color scheme, but the four colors are evenly spaced on the color wheel.



38.3995, 0.3593, 0.3279



38.3995, 0.3416, 0.3787



38.3995, 0.2680, 0.3274



38.3995, 0.2830, 0.2828

Rectangle

The Rectangle color scheme consists of four colors that form a rectangle on the color wheel.



38.3995, 0.3593, 0.3279



38.3995, 0.3656, 0.3646



38.3995, 0.2680, 0.3274



38.3995, 0.2622, 0.2913

Sweetspot

The Sweet Spot groups the original color and five complimentary colors.



38.4013, 0.3593, 0.3279



88.0598, 0.3245, 0.3287



40.0490, 0.3140, 0.2715



18.6395, 0.3256, 0.3287



0.0000, 0.0000, 0.0000



21.4041, 0.3127, 0.3290

Same Dimension

The Same Dimension uses a secret algorithm to generate beautiful new colors.



38.4013, 0.3593, 0.3279



58.8801, 0.3732, 0.3277



46.3431, 0.3541, 0.3569



11.2173, 0.3287, 0.3286



8.0874, 0.6376, 0.3286



0.4185, 0.6293, 0.3240

Inverse Universe

The Inverse Universe completely reimagines the original color for something new.



38.4013, 0.3593, 0.3279



58.8801, 0.3732, 0.3277



43.9047, 0.2763, 0.2994



11.2173, 0.3287, 0.3286



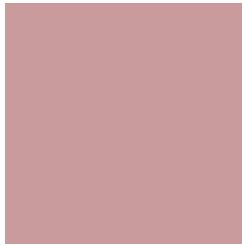
8.0874, 0.6376, 0.3286



0.4185, 0.6293, 0.3240

Previews

White Background



This preview shows how the Yxy color 38.3995, 0.3593, 0.3279 looks on a white background.

Color Contrast Check

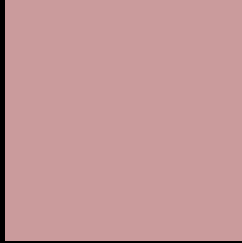
Large Text (above 18pt) WCAG AA × Fail

Any Text WCAG AA × Fail

Large Text (above 18pt) WCAG AAA × Fail

Any Text WCAG AAA × Fail

Black Background



This preview shows how the Yxy color 38.3995, 0.3593, 0.3279 looks on a black background.

Color Contrast Check

Large Text (above 18pt) WCAG AA ✓ Pass

Any Text WCAG AA ✓ Pass

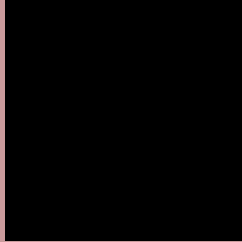
Large Text (above 18pt) WCAG AAA ✓ Pass

Any Text WCAG AAA ✓ Pass

If you want to check with other color combinations, try the [Color Contrast Checker](#).

Yxy 38.3995, 0.3593, 0.3279

Background



This preview shows how black text looks on a background with the Yxy color 38.3995, 0.3593, 0.3279.



This preview shows how white text looks on a background with the Yxy color 38.3995, 0.3593, 0.3279.

Color Blindness Simulation

Color vision deficiency is a very complex topic, and I could not describe the different causes any better than Wikipedia does, so if you want to learn more, you should check out their [article about color blindness](#).

Dichromacy



Original Color

38.3995, 0.3593, 0.3279

Protanopia

38.5390, 0.3209, 0.3346

Deuteranopia

38.4211, 0.3436, 0.3372



Tritanopia

38.5243, 0.3515, 0.3151

Trichromacy



Original Color

38.3995, 0.3593, 0.3279

Protanomaly

38.3238, 0.3338, 0.3318

Deuteranomaly

38.3693, 0.3491, 0.3344

Tritanomaly

38.4163, 0.3545, 0.3189

Monochromacy



Original Color

38.3995, 0.3593, 0.3279

Achromatopsia

39.6755, 0.3127, 0.3290

Achromatomaly

39.0550, 0.3289, 0.3290

CSS Examples

Text

The CSS property to change the color of the text to Yxy 38.3995, 0.3593, 0.3279 is called "color". The color property can be set on classes, ids or directly on the HTML element.

This example shows how text in the color `rgb(202, 155, 156)` looks like.

```
.text, #text, p{  
    color:rgb(202, 155, 156)  
}
```

If you want to add a text shadow in that color use the text-shadow property, you can generate a text shadow directly with our [CSS Text Shadow Generator](#).

Here you see how black text with a 4 pixel rgb(202, 155, 156) colored shadow looks like.

```
.shadow{ text-shadow: 4px 4px 2px rgb(202, 155, 156) }
```

Border

The CSS property to change the border of an element to Yxy 38.3995, 0.3593, 0.3279 is called "border". The border property can be set on classes, ids or directly on the HTML element.

This example shows the color as border, it can be applied via the CSS property "border" or "border-color".

```
.border, #border, table{ border:4px solid rgb(202, 155, 156) }
```

If only the border color should be changed use the property `border-color`.

```
.border{ border-color:rgb(202, 155, 156) }
```

If you want to add a box shadow in that color use:

Here you see how a box with a 4 pixel `rgb(202, 155, 156)` colored shadow looks like.

```
.boxshadow{ -moz-box-shadow:4px 4px 4px  
4px rgb(202, 155, 156); -webkit-box-  
shadow:4px 4px 4px 4px rgb(202, 155, 156);  
box-shadow:4px 4px 4px 4px rgb(202, 155,  
156) }
```


Background

The CSS property to change the background color of an element to Yxy 38.3995, 0.3593, 0.3279 is called "background". The background property can be set on classes, ids or directly on the HTML element.

```
.background, #background, body{  
background: rgb(202, 155, 156) }
```

If only the background color should be changed can be used:

```
.background{ background-color: rgb(202,  
155, 156) }
```

This example shows the color as background, it is applied via the CSS property "background".

To optimize and compress your CSS code, you can use our [online CSS compressor and optimizer](#) based on csstidy. If you want to create a linear or radial gradient as background or border, check our [CSS Gradient Generator](#).

Hey! You found this booklet interesting? Support Converting Colors with the new Membership Option!

The pro membership hides all ads, plus gives you double the colors in the color bucket, and more awesome pro features!

[Learn more, Memberships starting at \\$2.50/m!](#)

**Follow me
on Twitter!**

@ConvertingColor